

# CAROLSIDE PRIMARY

SCHOOL TRAVEL PLAN  
VOLUME 2 - MARCH 2010



## **CAROLSIDE PRIMARY SCHOOL**

### **INTRODUCTION**

The way we travel has a huge impact on our economy, health, environment, and the resources available for future generations. In 2007 road transport in Scotland accounted for approximately 25% of Scotland's carbon dioxide emissions. The transport sector also generates other environmental impacts like airborne and waterborne pollutants. For these reasons it is easy to understand why encouraging more efficient, convenient and sustainable travel is important.

It is estimated that one-fifth of all vehicles on our roads at 08.50am are involved in school travel and of course, the challenge is to put sustainable transport measures into practice - for example; by providing the information, support and infrastructure to help those travelling to and from school to choose to walk, cycle, take public transport, or trip share more often than they currently do.

### **CAROLSIDE PRIMARY**

Carolside Primary School is a non-denominational primary school run by East Renfrewshire Council. The school teaches Primary 1-7 pupils from age 5-11. The school catchment takes in approximately 677 pupils and Carolside is a feeder school for Williamwood High School.

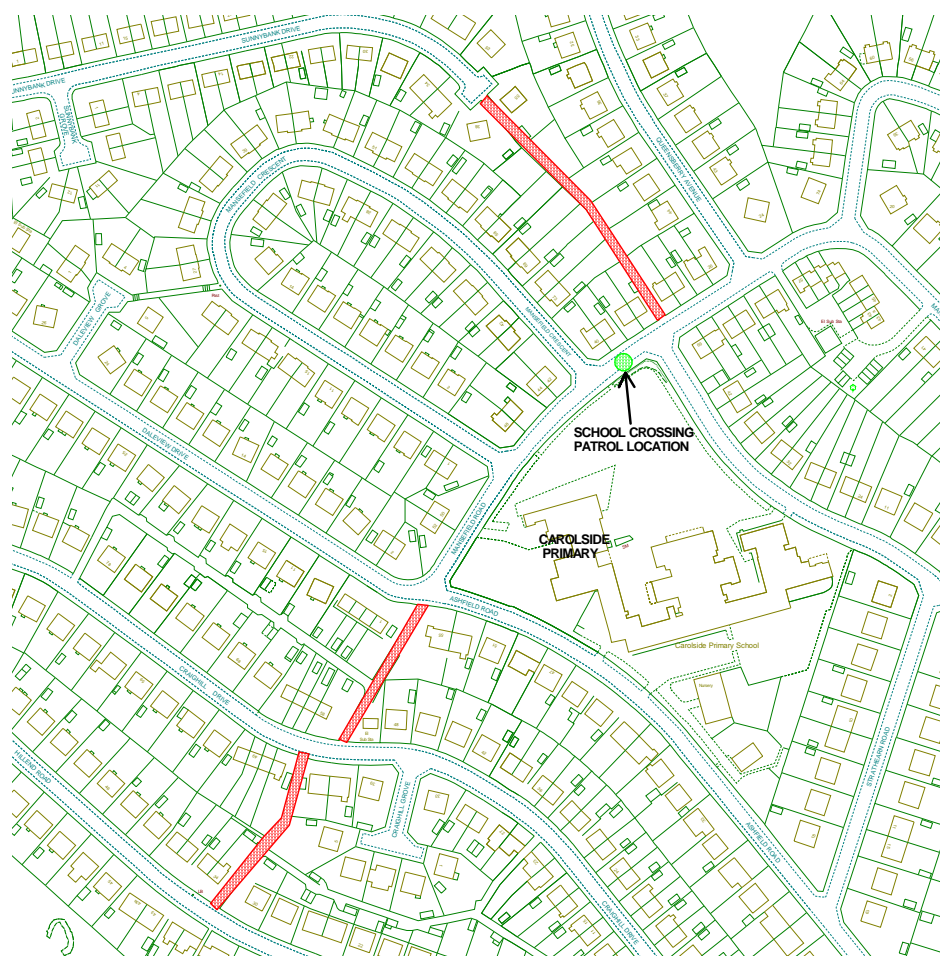
Carolside have a strong Eco Schools committee which is very popular amongst pupils and the school is working towards its 3rd Green Flag award. The school has an 'Active Schools Coordinator', Lesley Palmer, whose role it is to encourage and support opportunities for pupils to take part in regular physical activity. Initiatives at the school are supported by an active Parent Council which meets monthly.

## ACCESS TO SCHOOL

Carolside Primary School can be accessed on foot, by bicycle, public transport and by car, or by a combination of these modes or transport. There is a breakfast club which is available from 8:30am and supervised arrival in the playground starts at 8.45.

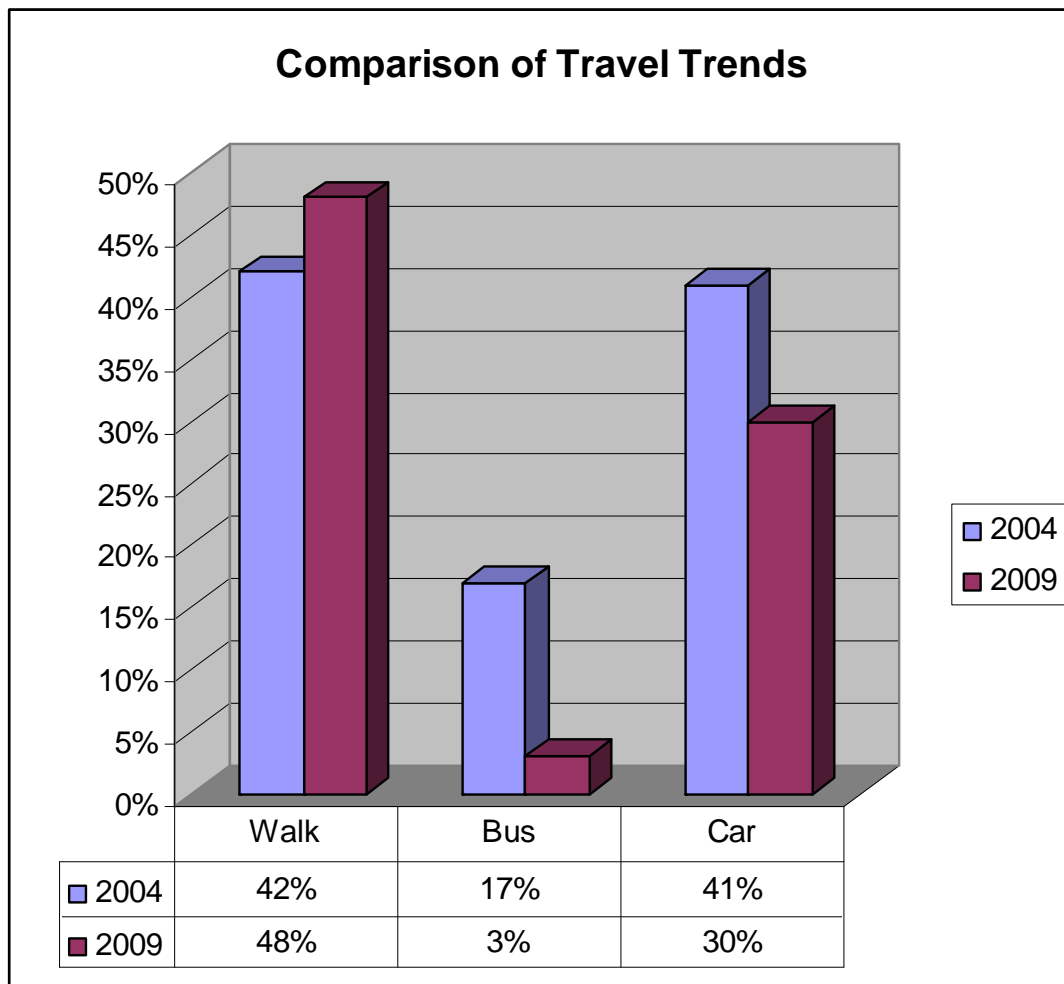
Pedestrian provision within Clarkston and in the immediate vicinity of Carolside Primary School is generally good. Local streets are well lit and have well maintained pedestrian footways. There are local off road footpaths which provide convenient routes to school:- see map below.

School Crossing Patrollers serving the school are in operation at Mearns Road, at the pedestrian crossing, Greenwood Road, at its junction with Sundale Avenue, Eaglesham Road, near its junction with Ashfield Road and on Mansfield Road, near its junction with Greenfield Road.



## ANALYSIS OF TRAVEL TRENDS

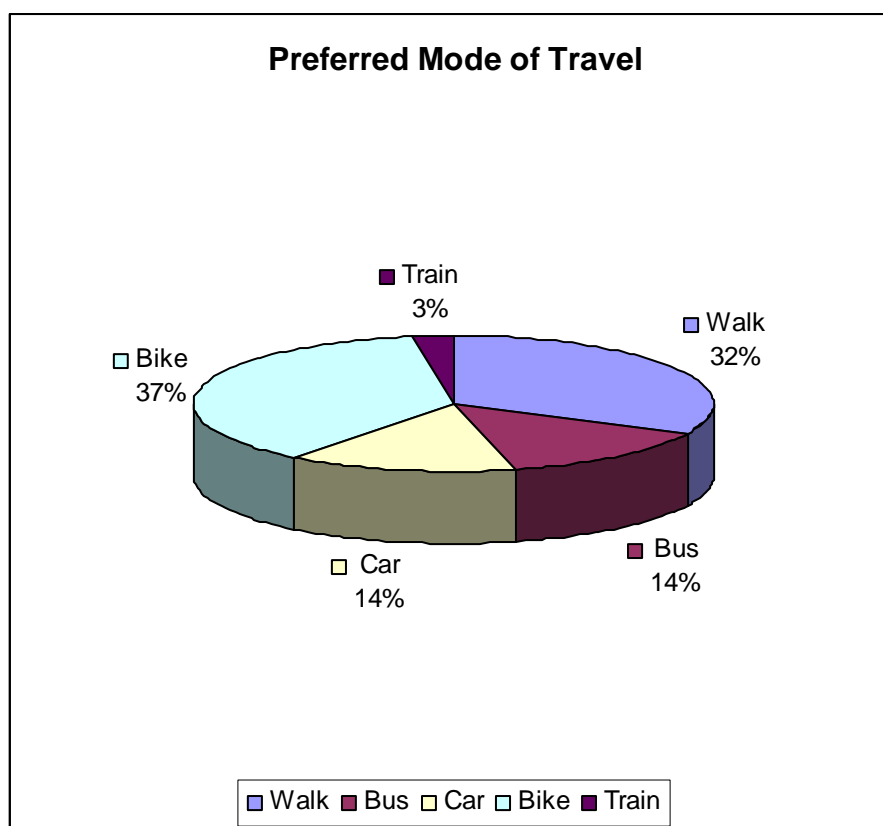
In March 2004 pupils completed a questionnaire on travel patterns. This data will be compared in this section to results obtained from the annual national 'Hands Up' survey which took place in September 2009.



- It can be seen from the table above that walking rates have increased by 6%.
- The level of bus use has dropped as a result of the 'pay-bus' service being cancelled.
- At a glance it appears that car use has dropped by 11%, however in the 2009 survey 16% of respondents ticked the 'Park and Stride' box - this option was not available in the 2004 survey. Parking remotely from the school and walking the remainder of the way is beneficial as it reduces congestion around the school gates whilst giving the pupils a bit of exercise. There will be more on this initiative later in the plan.
- 11 (2%) of pupils now cycle - there were no cyclists in 2004.

## PREFERRED MODE OF TRAVEL

The pupils were asked what their preferred mode of travel to school would be and interestingly, the results are as follows:- 225 (32%) pupils would like to walk to school, 258 (37%) pupils would like to cycle to school, 101 (14%) pupils would like to be driven to school.



The significant statistic this survey flags up is the desire for pupil's to cycle to school (37%) - currently 2% cycle, in 2004 no pupils cycled on the day of the survey. Cycle racks have been installed in the school. Should demand for cycle parking outstrip supply the Council will endeavour to install additional cycle racks. Carolside is considering offering cycle skills training to P5 pupil's to further encourage cycling to school.

## AIMS OF THE CAROLSIDE SCHOOL TRAVEL PLAN

- To improve pedestrian safety in and around the school.
- To encourage more local pupils to walk to school.
- To raise awareness amongst pupils, parents and staff of the wider health and environmental problems associated with increased car use.
- To raise awareness amongst pupils, parents and staff of the health benefits of walking, and cycling to school.
- To ensure those pupils, parents and staff are supported and encouraged to make positive, healthy travel choices.
- To improve the local environment for everyone by reducing pollution, congestion and addressing safety issues around the school.

## TRANSPORT AND ROAD SAFETY CONCERNS

- Parents are parking in the bus bay. This is not acceptable behaviour - the bus bay is for buses only.
- The current level of pupils being driven to school makes it more dangerous for pupils who currently walk to school. The current level of vehicular traffic and the associated safety risk may be preventing more pupils from walking to school.
- Traffic congestion at both entrances to the school.
- Volume of traffic parked around the school at peak times makes it difficult for pupils who currently walk to school to cross the road safely.
- Parents parking / driving on the footway is a problem. This is most prevalent on Mansfield Road.

## PROGRESS TO DATE

Carolside Primary started work on Travel Planning in Spring 2004. Since this time a package of works have been undertaken in and around the school:-

- A part-time 20mph speed limit has been established.
- Speed cushions have been installed.
- Cycle parking has been set up.
- The footpath between Craighill Drive, Hillend Road and Ashfield Road has been resurfaced and upgraded.
- A pedestrian crossing has been installed on Mearns Road.

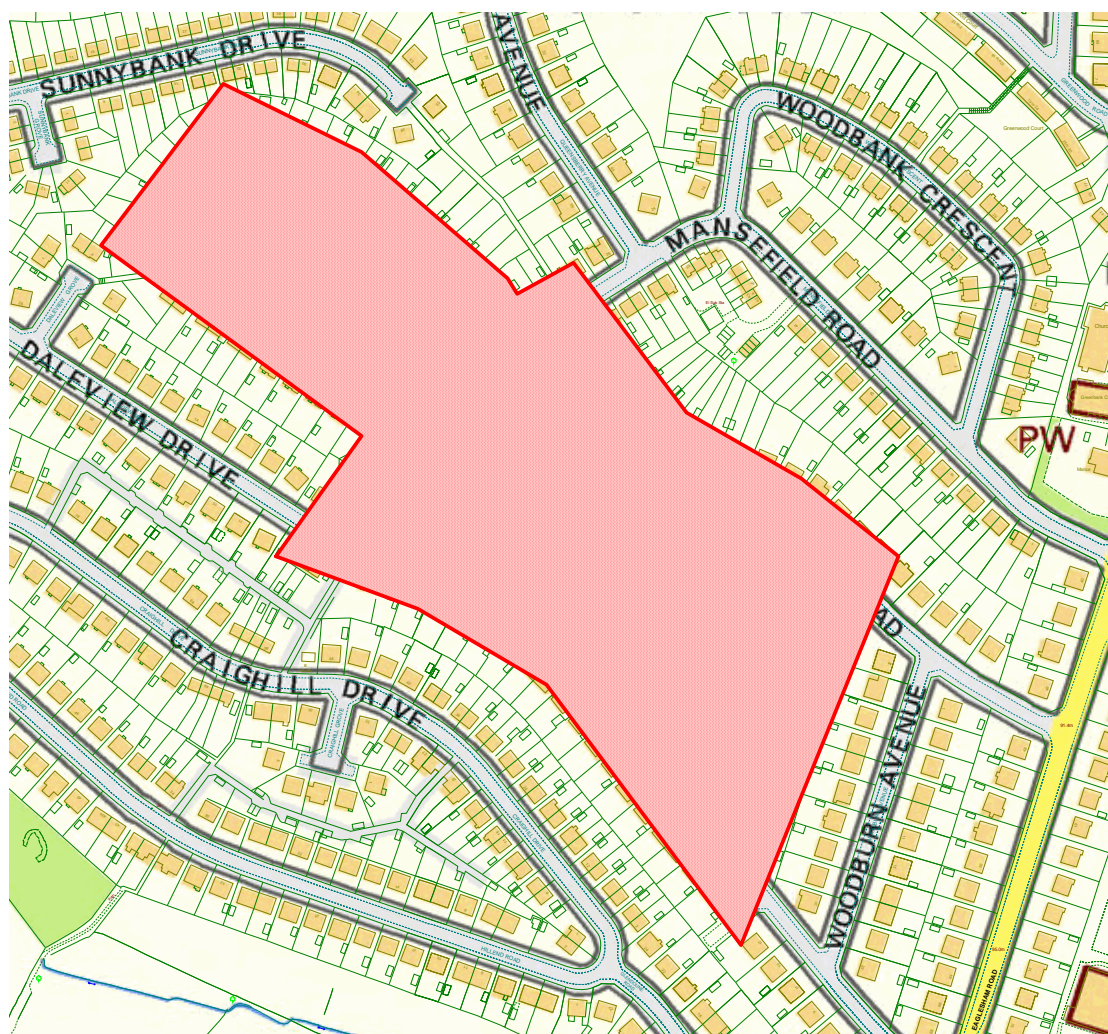
## CAROLSIDE PRIMARY - SCHOOL TRAVEL POLICY

- Carolside Primary would like to reduce levels of car emissions around the school. Parents who drive to school are encouraged to switch off their engines whilst waiting for pupils.
- Park and Stride:- Older pupils are expected to walk at least part of the way to school to reduce congestion around the school gates.
- Parents who park on Sunnybank Avenue are encouraged not to park near the hammerhead at the end of the Avenue.
- Parents are encouraged not to park on footways, as this can be dangerous for pupils walking on footways. Parking close to the school also restricts visibility for pupils crossing the road.



## PARK AND STRIDE INITIATIVE

A Travel Plan is not an anti-car exercise as Carolside Primary fully understand that some pupils have to be driven to school for various reasons. However, we encourage parents who do drive to school to park outwith the red zone shown on the plan below as often as possible. This will reduce congestion levels outside the school gates and allow pupils to stretch their legs.





## PUBLIC TRANSPORT

Information about the full range of public transport services available to the whole school community can be found by using the free journey planning services offered by Traveline Scotland:

<http://www.travelinescotland.com/> or Transport Direct:

<http://www.transportdirect.info>. Each of these websites allow users to plan any public transport journey within Scotland and from Scotland to the rest of the UK and they provide up to date and impartial information on how to get to a chosen destination by the quickest public transport mode. The Traveline service is also available by phoning: 0871 200 22 33 and Transport Direct allows users to plan car journeys as well as public transport journeys or journeys comprising both.

## CAR SHARING

Encouraging staff to share a lift with a colleague and parents to share the school run with other parents is another way to help reduce car traffic outside the school gates. SPT operate an online journey sharing service for the whole of greater Glasgow including Clarkston. This online service helps users match up journeys by car, taxi, on foot or by cycle. It is free to join and offers users guidance on safety and forming a successful journey sharing arrangement. Carolside Primary School actively encourages car sharing. More information can be found at:

<https://spt.liftshare.com/>.



## SUMMARY OF OBJECTIVES AND PROPOSALS

Objectives	How	By When	Who
<p>Increase and maintain number of pupils passing 'Scottish Cycle Training Scheme' at over 70%.</p>	<p>* Greg Brown, School Travel Co-ordinator (STC) to train trainers to deliver SCTS. Teachers and Parent volunteers to deliver training.</p> <p>* Active School Co-ordinator (ASC) and teachers to deliver cycling skills training to P5 pupils as a precursor to the SCTS in P6.</p>	Ongoing	Teachers, Parent Volunteers, ASC, STC
		Ongoing	Teachers, ASC
	<p><u>Cost N/A</u></p>		
<p>Support those who cycle to school</p>	<p>* Push towards Cycling Scotland's 'Cycle Friendly Schools' award.</p> <p>*Distribute reflective tabards to regular cyclists.</p>	Ongoing	Greg Brown (STC) to advise school
		Ongoing	STC, ASC
	<p><u>Cost To be met by East Renfrewshire Council</u></p>		

<b>Objectives</b>	<b>How</b>	<b>By When</b>	<b>Who</b>
<p>To encourage an improvement in the number of pupils, parents and teachers walking to and from school. Target 50% by September 2011.</p>	<ul style="list-style-type: none"> <li>* Identify 'Park and Stride' drop off zones</li> <li>* Continue to participate in 'Walk to School' week events</li> <li>* Consider undertaking 'Walk on Wednesday' Campaign</li> </ul>	<p>Ongoing</p> <p>May and October</p> <p>Ongoing</p>	<p>Teachers, STC</p> <p>ERC, Teachers, Pupils</p> <p>Teachers, Pupils</p>
	<p><b>Cost</b> <u>To be met by East Renfrewshire Council</u></p>		
<p>To encourage pupil, parent and teacher awareness of road safety and safe travel to and from school.</p>	<ul style="list-style-type: none"> <li>* Develop programme of study for P1 to 7 on road safety under curriculum for excellence</li> <li>* Develop 'Junior Road Safety Officer' scheme.</li> <li>* Promote sustainable travel through educational theatre.</li> </ul>	<p>Ongoing</p> <p>Ongoing</p> <p>When budgets are available</p>	<p>Whole School</p> <p>East Renfrewshire Council, Teachers, Pupils</p> <p>East Renfrewshire Council, Teachers, Pupils</p>
	<p><b>Cost</b> <u>To be met by East Renfrewshire Council</u></p>		

<b>Objectives</b>	<b>How</b>	<b>By When</b>	<b>Who</b>
To reduce level of traffic congestion around school at the beginning and end of the school day.	<p>* Encourage sustainable travel, car sharing and parking away from the school gates.</p> <p>* Encouraging parents to not drive into school crush zone if possible.</p>	Ongoing	Whole School
	<p><u>Cost To be met by East Renfrewshire Council</u></p>		
Link Travel Plan activities with Eco-school project	* Liaison between Eco-school and Travel Plan staff to ensure continuity.	Ongoing	Elaine Walker - Acting Principal Teacher and Elaine McNeil - Principal Teacher
Consider undertaking 'Travelling Green' resource for P5 pupils	* This is an active travel resource aimed at encouraging pupils to travel in a sustainable manner.	Ongoing	Greg Brown (STC), ASC and Elaine Walker - Acting Principal Teacher
	<p><u>Cost To be met by East Renfrewshire Council</u></p>		

## EVALUATION AND MONITORING

- Subsequent annual 'Hands Up' survey data will be used to record trends in travel behaviour and assess progress that has been made.
- Following each annual survey, a meeting will take place between all interested parties and a report compiled to assess the Travel Plan and revise it as necessary.

## APPENDIX

Links to national programmes and initiatives that are supportive (e.g. in terms of provision of advice, information and other resources) of the goals of many of the recommendations put forward in this document:

- Energy Saving Trust: [www.est.org.uk](http://www.est.org.uk)
- Bike Week: [www.bikeweek.org.uk](http://www.bikeweek.org.uk)
- Paths to Health: [www.pathsforall.org.uk/pathstohealth/](http://www.pathsforall.org.uk/pathstohealth/)
- Road Safety Scotland: [www.road-safety.org.uk](http://www.road-safety.org.uk)
- Choose Another Way: [www.chooseanotherway.com](http://www.chooseanotherway.com)

Links to websites that provide a range of useful information:-

- Travel Line Scotland - Public Transport Information: [www.travelinescotland.com](http://www.travelinescotland.com)
- UK Sustainable Transport Charity : [www.sustrans.org.uk](http://www.sustrans.org.uk)
- Walk It Glasgow : <http://www.walkit.com/glasgow/>
- Arriva Glasgow: [www.arrivabus.co.uk/town-guides-scotland-glasgow/](http://www.arrivabus.co.uk/town-guides-scotland-glasgow/)
- First Glasgow: [www.firstgroup.com/ukbus/scotland/swscot/home/](http://www.firstgroup.com/ukbus/scotland/swscot/home/)
- Stagecoach: [www.stagecoachbus.com](http://www.stagecoachbus.com)
- Citylink: [www.citylink.co.uk](http://www.citylink.co.uk)
- National Express: [www.nationalexpress.com](http://www.nationalexpress.com)
- MegaBus: [www.megabus.com](http://www.megabus.com)
- First Scotrail website: [www.firstgroup.com/scotrail](http://www.firstgroup.com/scotrail)
- SPT lift sharing scheme: <https://spt.liftshare.com/>

