

INVESTING HERE

Delivering a desirable, dynamic place to live, work, invest and visit

EAST RENFREWSHIRE

March 2024



Supporting our People, Places and Businesses through a range of ambitious projects and initiatives

Significant investment of around £240 million is planned within East Renfrewshire over the next 10 years, as set out in the capital investment plan. This is set to deliver huge benefits for our residents and businesses as we work towards our vision to be a modern, ambitious council creating a fairer future with all, with the ultimate aim of making people's lives better.

This overview provides information and images on recent and planned investment in the area as well as detail on a range of externally funded initiatives designed to support inclusive economic growth.



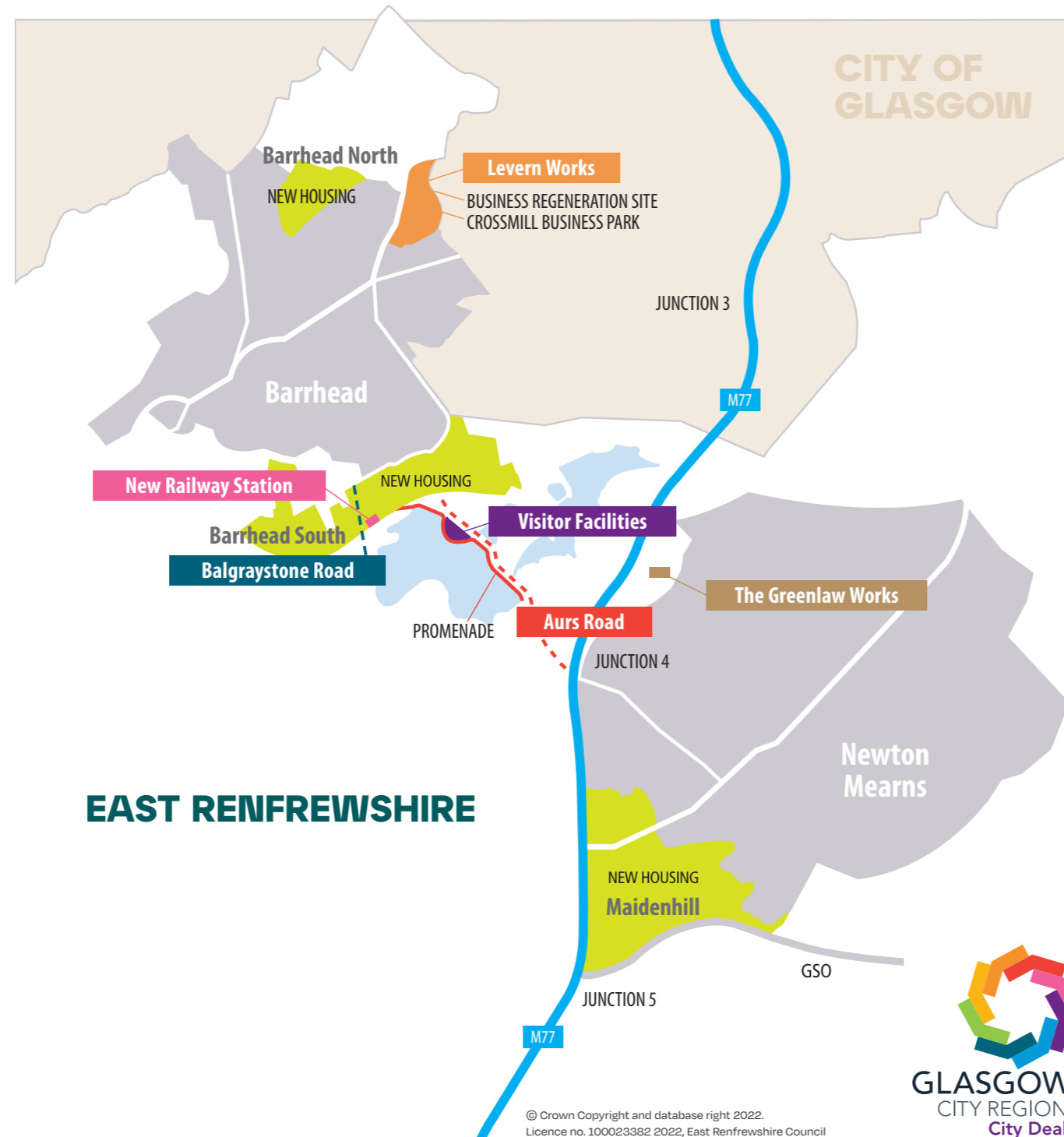
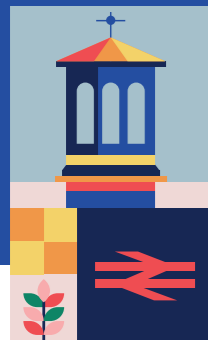
Contents

City Deal	4
HERE Place Brand	8
Town Centres and Neighbourhoods	10
Skills, Employability and Business Growth	14
Parks and Greenspaces	16
Explore East Ren	17
Housing	18
Learning	19
Culture and Leisure	20
Roads and Digital Infrastructure	21
Older People and People with Long Term Conditions	21
Corporate and Digital	22



City Deal

- The £1.13 billion City Deal infrastructure fund across the Glasgow City Region is aimed at enabling a programme of works that will add considerably to the value of the local regional economy over a number of years.
- East Renfrewshire is benefiting from a £44 million investment package comprising £38 million investment from the Scottish and UK Governments and co-funded by the Council through a £6 million capital contribution.
- A programme of ambitious projects has been designed to stimulate economic growth, improve transport links, increase leisure opportunities, support business development, unlock residential land and generate economic benefits measured as additional Gross Value Added (GVA) and employment.
- Additional funding has been levered in from RCGF, Sustrans and developer contributions from the new housing.



Lavern Works

- Completed in 2016 - vacant land in Barrhead was prepared for business growth and commercial development.
- Crossmill Business Park – construction of 10 commercial units, enabling a number of small businesses to grow.
- Former Nestlé factory site at Glasgow Road - preparation of part of the site to attract private sector investment. Barrhead Retail Park opened in Spring 2023 and is expected to boost economic growth and provide 150-200 local jobs.



Balgraystone Road

- Improvements to Balgraystone Road were completed in 2020 and enabled access and utility services for housing at Barrhead South, supporting the regeneration of Barrhead.
- A consortium of house builders are working with East Renfrewshire Council to realise this project which includes 47 council homes completed in June 2022.
- Better access to Dams to Darnley Country Park and the proposed new rail station was also created enabling a future rail and bus interchange as well as an new active travel path.



The Greenlaw Works

- New business centre created in Newton Mearns adjacent to Junction 4 of the M77.
- Meets a demand for quality office space in the area to boost small business growth.



New Rail Station

- Balgray Station – a new rail station and bus interchange is planned at Barrhead South, on Glasgow to Neilston line.
- Will provide improved access to jobs, education, health and other services for the existing community and new residents from the new housing developments.
- Improved public transport link to Dams to Darnley Country Park.



Aurs Road

- Aurs Road is set to be transformed - from a winding, single carriage road to a safer, straighter road with 2km active travel route and stunning waterside promenade overlooking Balgray Reservoir.
- Will form a safer, more direct local route between Barrhead and Newton Mearns by straightening out two sections of the road and replacing a weak road bridge.
- Includes the creation of a long-awaited 4km circular walking and cycling route around Balgray Reservoir.
- Will pave the way for new visitor facilities at Dams to Darnley Country Park.



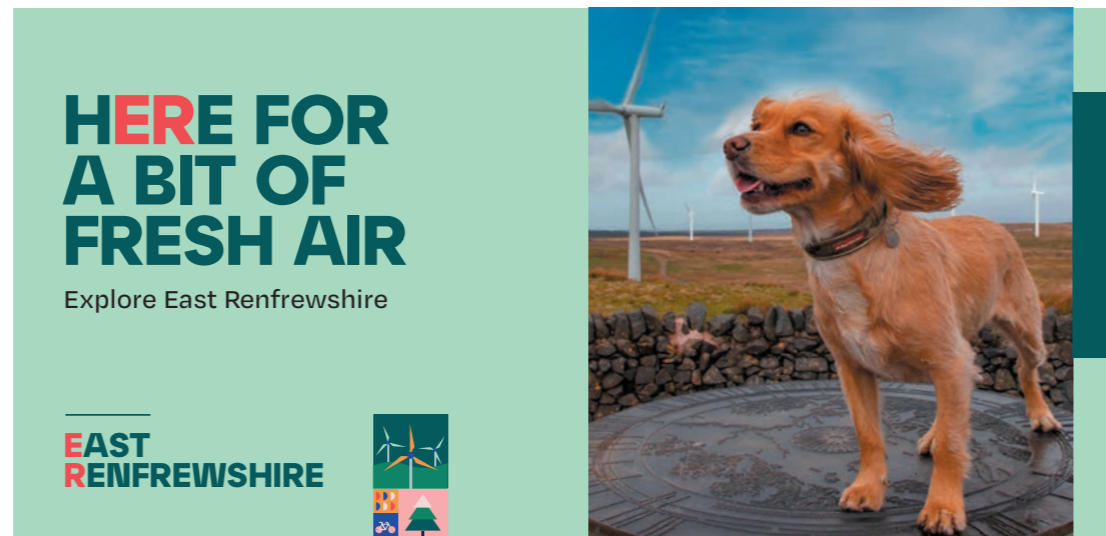
Visitor Facilities

- Creating visitor facilities with potential for water sports at Dams to Darnley Country Park to make the park more appealing and accessible for visitors.
- Close links with other City Deal projects – Balgraystone Rd, Aurs Rd, Rail Station.



HERE Place Brand

- The Council's 'Here' place brand aims to unite the area's unique towns and people, encouraging a shared sense of pride amongst residents.
- The branding is supported by a colourful design and local photography, and is anchored by a graphical patchwork showcasing the diversity of the different towns, landmarks and activities that make up East Renfrewshire. The patchwork is inspired by the textile industry history of the area, with a modern twist.
- An initial campaign in 2021, funded by the Scottish Government's Town Centre fund and Scotland Loves Local, helped support economic recovery and community wellbeing following the effects of the pandemic and included social media videos and bus stop adverts highlighting local businesses and beauty spots.
- Personalised lamppost banners provide a warm welcome to each town and the Council's refuse vehicles continue to display the area's outdoor spaces.
- New eye catching banners at health centres now feature the Here branding, broadening out use across the Council family.
- Flexible and adaptable, the Here brand has the ability to promote East Renfrewshire as a desirable place in which to live, work, visit and invest over the longer term.



YOU MAKE A DIFFERENCE HERE

Town Centres and Neighbourhoods

Neilston

- Shop Front Improvement Scheme- eligible shop owners on Neilston's Main Street were offered grants at the end of 2021 to support the upgrading of shop fronts to help elevate the high street. The new scheme is helping create an attractive town centre for residents and visitors to enjoy as well helping local businesses recover from the effects of the Covid-19 pandemic.
- Gateway Feature - located at either end of Neilston, the two bull sculptures pay homage to the origin story of the Neilston Agricultural show, when a local dispute between two neighbours and resulting contest to determine the best prized bull grew into an annual event that has continued since the early 19th Century. The project has created two attractive sculpted features at either entrance/exits to the village and celebrate and promote the local history of Neilston.



LOVE
LOCAL
HERE

NEILSTON
EAST
RENFREWSHIRE

Busby

- A new sculpture has been erected in Busby honouring the contribution of Thomas Donohoe, credited with first introducing football to Brazil in 1894. Commissioned by the Council, supported by Busby Community Council and funded from the Scottish Government's Town Centre Fund, it is hoped that the sculpture will attract visitors to the village, as well as adding to the cultural and sporting links between Scotland and Brazil.



A WARM
WELCOME
HERE

BUSBY
EAST
RENFREWSHIRE

Town Centres and Neighbourhoods

Barrhead

- We committed nearly £100 million to a masterplan to redevelop and modernise Barrhead's economy between 2007 and 2017. The Glasgow Road corridor is being redeveloped into a dedicated business district which includes Crossmill Business Park, Barrhead Retail Park, Blackbyres Court, and the former Bowerwalls housing area.
- **Cowan Park Community & Enterprise Hub** - regeneration of the Cowan Park Gate Lodge property in Barrhead, to create a public space that brings community agencies and groups together to offer a range of activities, programs and services. Local charity, Include Me2, now provide a wide range of services from the centre including a coffee shop which is part of their Social Blend enterprise, helping young people and adults with additional support needs, disabilities and mental health conditions into training and employment.
- **Dunterlie Employability Hub** - services delivered from the new hub will support people from Dunterlie and the surrounding area to build confidence and skills to be able to access employment opportunities and vocational training. The hub will provide much needed access to ICT equipment and public Wi-Fi for local residents and will bring together key agencies together to offer a range of activities, programmes and services that will lead to transformational change in the area.



**SHOP
HERE**

BARRHEAD
EAST
RENFREWSHIRE

Levern Water Revival

- A £2.8 million investment has transformed the Levern Water and the surrounding area which had previously been derelict for decades.
- A wider, more natural river channel has been restored to the river, which runs through Barrhead, with the ability to better absorb flooding and encourage more fish and wildlife.
- An attractive riverside greenspace and path network with over a hectare of wildflower meadows has been created for locals to enjoy in Carlibar Park, close to the shops and services in Barrhead town centre.
- Led by East Renfrewshire Council, the project was funded through £1.6 million from the Scottish Government's Water Environment Fund, administered by the Scottish Environment Protection Agency (SEPA) and £1.1 million from the Scottish Government's Vacant and Derelict Land Investment Programme, with a further £0.1 million contribution from Sustrans.
- Carlibar Primary School has been involved in monitoring the health and biodiversity of the Levern Water with support from the Clyde River Foundation. Pupils will soon be helping to rear thousands of trout in their classrooms to release into the river next spring. It is hoped that they will record the first salmon to return to the river in 170 years next year.



Skills, Employability and Business Growth

The Economic Development team work with a wide range of partners to drive local economic growth in East Renfrewshire through support for employment, skills, businesses and improvements to our town centres and neighbourhoods.



People

Work EastRen is East Renfrewshire Council's employability service. Their primary aim is to help people aged 16 and over in East Renfrewshire to improve their skills to get ready for work and find jobs. The team offer a wide range of support including help with CVs, job applications, interview skills as well as access to employment and training opportunities. The team also work closely with employers to match local residents to jobs through local jobs fairs and a free recruitment and vacancy service as well as employer recruitment incentives.

Place

The team work with a wide range of partners to help develop and improve our town centres and neighbourhoods across East Renfrewshire and to make them more attractive, accessible and active as set out in the Scottish Government's town centre action plan. Our towns and neighbourhoods, provide vitally important functions, such as being a focal point for local communities, a centre point for economic activity and job creation and retention, being transport hubs, spaces for leisure and increasingly places to live.

We have a range of programmes and initiatives in place including:

- Our Town Centres and Town Centre Audits
- Placed Based Investment Programme
- Local Action Plans
- Here is home campaign
- ER City Deal projects



Business

Local business plays a critical role in East Renfrewshire's economy. With over 3,000 businesses in the area they are not only key wealth generators but are also an important part of their local communities. East Renfrewshire Council work with a wide range of partners such as East Renfrewshire Chamber of Commerce and the 3 Business Improvement Districts in Barrhead, Clarkston and Giffnock to support businesses to access good quality business advice and support, affordable workspace, business finance and public sector procurement contracts.

Business Gateway East Renfrewshire offers funded financial, marketing and strategic support to help those starting up or growing a business, including workshops, events etc.



Newton Mearns Community Hub

The hub is located near the Avenue Shopping Centre, on McKinlay Place, and offers an accessible space for people to connect with local services. These services include our Work East Ren and Economic Development teams, as well as Business Gateway and Skills Development Scotland. The facility is funded through the Scottish Government's Place Based Investment Programme, which supports community-led local economic development and regeneration, and builds on previous projects in the Newton Mearns area to improve pedestrian crossings, signage, planting and lighting in the town centre and Fairweather Park.

Parks and Greenspaces

Over the last 3 years, we have invested in new equipment and upgraded the following facilities:

- New state-of-the-art Changing Places Toilet facility in Rouken Glen Park, allowing people with profound and multiple learning disabilities or with physical disabilities, a safe and comfortable space to use (£262k).
- Refurbishment of play areas and enhancing these to make them more inclusive at Seres Rd (£60k), Crookfur (105k), Fairweather Park (£135k) and Crossmill Park (£100k).
- Outdoor exercise equipment installed at Fairweather Park, Aurs Drive, Crossmill Park, Capelrig Way.
- Removal of existing dilapidated pitch and the installation of new pitch at Muirend (£150k).
- Refurbishment of all-weather sports pitches at Mearns Castle High and Isobel Mair.
- Refurbishment of play areas in Overlee Park in Clarkston (£85k) and Busby Glen (£45k).
- Solar lighting installed to Broomburn Park in Newton Mearns (£12k).

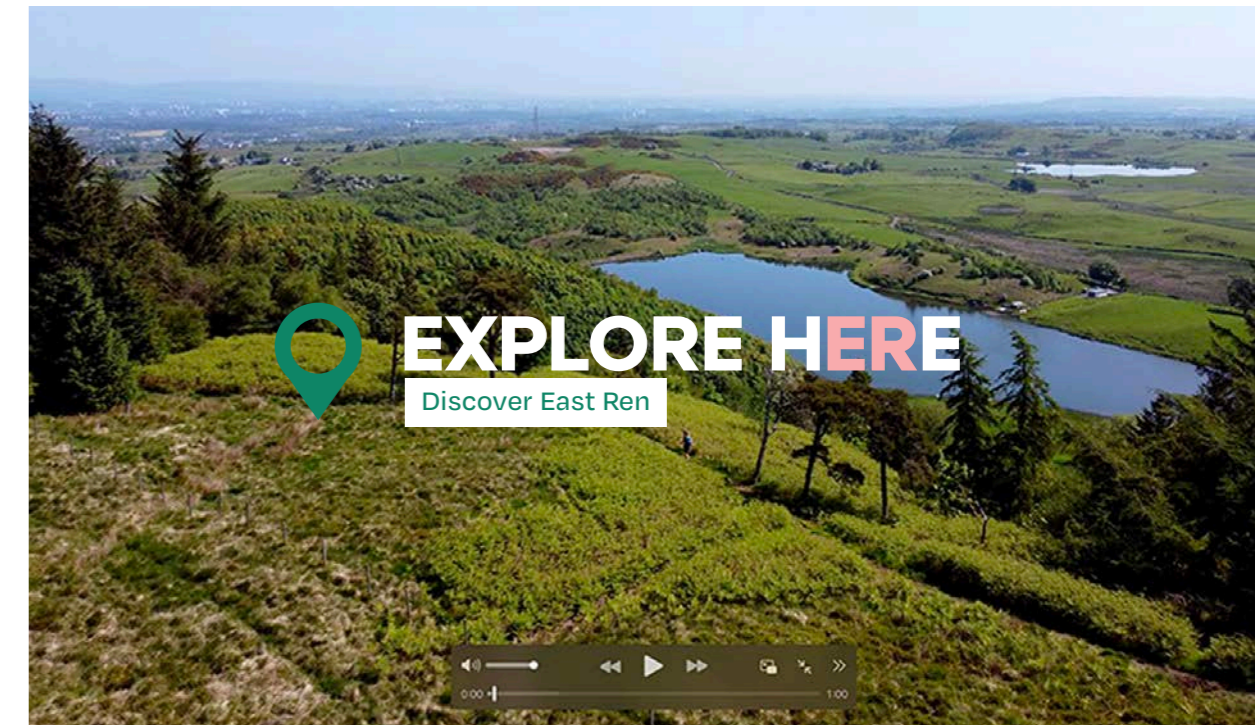
Planned future projects include:

- Cowan Park Bandstand refurbishment (£125K)
- Crossmill Park MUGA installation (cost TBC)
- McDiarmid Park, Barrhead refurbishment of play area (£90K)
- Thornliebank Playing Field, installation of play area (£120K)



Explore East Ren

- East Renfrewshire has a fantastic range of local beauty spots for walking and cycling.
- A series of videos with accompanying route maps has been developed to showcase what East Renfrewshire has to offer for days out.
- Funded by the UK Government's Shared Prosperity Fund, the project aims to encourage 'pride in place' amongst residents.
- Locations profiled include Dams to Darnley, Whitelee Windfarm, Rouken Glen, the Craigie (Duncarnock Fort), Neilston Pad, Fereneze Braes, Pollock Glen, Harelaw Dam, and Capelrig Way.
- Route maps and film clips available on the [Council's website](#)



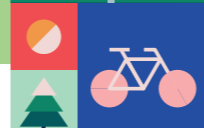
EXPLORE HERE
Fereneze Braes

A walk over Fereneze Braes with views across Neilston to Eaglesham moors and over to Glasgow with a return down through Killoch Glen.

Distance	5 miles - out and back
Time	2.5 hours
Start / Finish	Barrhead train station
Grade	Moderate
Local Shops	Main Street, Barrhead

© Crown Copyright and database right 2023. All Rights Reserved. Ordnance Survey Licence number 100023382 2023, East Renfrewshire Council.

EAST RENFREWSHIRE



1. From Barrhead train station cross Paisley Road into Graham Street. Walk along the pavement, cross Laurel Way then enter the grassy area and follow the signpost for Killoch Glen. Climb the path along the side of Fereneze golf course. Turn right at a signpost for Killoch Glen and climb gradually beside the golf course to reach the top of the slope.
2. Go down a short way to another signpost and turn left onto a track. After a few yards take the smaller path to the left passing two wooden posts with white arrows. Go through a gate and turn right onto the single track road. Walk along gently downhill to another signpost for Killoch Glen and turn left through a gate onto a narrow grassy path between a wall and fence. Go through the gate at the top of the path and carry straight on at a signpost for Paisley via Glenburn Reservoir. After a few yards go through another gate after which the path veers right over a footbridge and climbs gradually to the viewpoint and cairn with views across Glasgow to the Campsie and Ben Lomond.
3. Follow the path back through the first gate to the signpost then turn right through a gate for Killoch Glen. Walk over a short stretch of boardwalk and follow the path through a gate then over two footbridges either side of another short boardwalk. Pass through a small gate and the path climbs gently with views over to Neilston Pad before levelling out and reaching a fence. Turn left, go down the steps then turn right through a gate. After reaching another gate you'll see a sign for Killoch Glen. Follow the right hand trail along the top edge of the trees then down through the trees towards Killoch Burn.
4. Follow the path left above the burn and then right at the fence and down some steps, go through a gate then turn left into woodland above waterfalls. As the path continues bear right and continue above steep slopes through the Glen down steps and over footbridges to the road. Turn left and follow the road through Gateside back to Barrhead train station.

SCOTTISH OUTDOOR ACCESS CODE
outdooraccess@erf.gov.scot

New Housing

- Plans are progressing to provide 360 homes for social rent to meet a significant demand and need throughout the local area.
- Since embarking on its new build development journey, we have provided some 174 new homes including our largest development to date at Balgraystone Road, Barrhead. A further 14 units are due to complete in the Spring of 2023 at Malletsheugh, Maidenhill and we're pursuing another 5 sites with the potential to provide a further 173 new homes.
- Our housing contractors have provided modern apprenticeships, work experience opportunities and contributions towards community projects.



Existing Housing

- A spend of £24.7 million is planned on our existing housing stock over the next five years.
- This includes upgrading various internal elements such as kitchens, bathrooms, fans, windows, doors, electrical systems, boilers and central heating systems; Roof replacement and Wall render with Insulated render where feasible, instead of ordinary render; Investment in our Sheltered Complexes, upgrading heating systems and lift replacement.



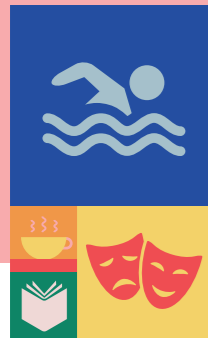
Learning

- A new Learning Campus in Neilston, a combined home for Neilston Primary school, St Thomas' Primary School and the Madras Family Centre is under construction. The new campus has been designed with sustainability and climate change in mind.
- Investment to extend school facilities at St Ninian's High school (£2.5 million) and Crookfur Primary school (2.3 million).
- £1.6 million to improve learning environments to better meet modern learning styles and curricular experiences across the school estate.



Culture and Leisure

- £1.7 million to be invested over the next 10 years to improve cultural, leisure and community facilities.
- Plans for a potential new Leisure Centre in Neilston are under review.
- £56m investment planned to develop a new Eastwood Park Leisure Centre including state-of-the-art gym and leisure facilities, a theatre and library.



Roads

- £19.5 million investment aimed at achieving a significant improvement in the condition and safety of roads.



Older People and People with Long Term Conditions

- Investment of £1.15 million to upgrade our telecare systems which allow older and vulnerable people to remain in their own homes.

Corporate and Digital

- Investment of £2.7 million to extend full fibre digital infrastructure across the area.
- £24.5 million for ICT technology projects over the 10 year period to support necessary corporate improvements, enhance technology available in schools and other Council premises and provide a more modern, digital service to residents.
- £14.6 million for improvements necessary to Council property including energy efficiency measures.

East Renfrewshire COUNCIL

My East Ren

Start search here...

WORKING TO CREATE A FAIRER FUTURE WITH ALL

SCHOOL MENUS
View lunch menus for all our primary and high schools and early years.

BIN COLLECTION DAYS
Check when your waste and recycling bins are emptied.

SCHOOL HOLIDAYS
Find out the school holiday dates for 2021 to 2022 and 2023 to 2024.

START YOUR CAREER IN HOME CARE
Find out how to become a carer.

BUDGET BRIEFING 2023-2026: SHAPING OUR FUTURE
Read about the financial challenges facing the Council over the next 3 years.

Services

Schools and learning

Rubbish and recycling

Health and care

Business and consumers

