

**East Renfrewshire
Local Policing Plan
2020-2023**

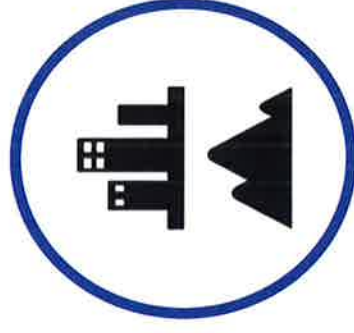


**Our Plan to Improve the Safety and Wellbeing of
People, Places and Communities in East Renfrewshire**

CONSULTATION DRAFT Version 0.4

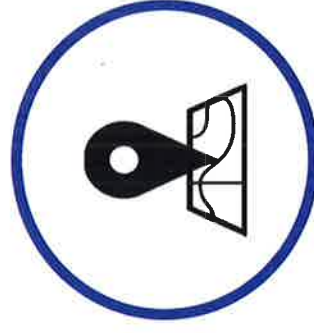
Introduction

This policing plan relates to the **East Renfrewshire** area which encompasses widely contrasting communities from densely populated areas such as Thornliebank, Clarkston and Newton Mearns to the semi-rural villages of Eaglesham and Uplawmoor. Local Policing services are provided from Giffnock and Barrhead Police Offices with specialist support provided by a variety of units from across the country.



East Renfrewshire has a population of just over 95,000 and this is expected to grow faster than the Scottish average in the coming years.* This is partly due to new housing developments such as Maidenhill where 834 new homes, a new primary school and a community religious facility are being developed. In total, 3,311 new homes are planned for the area by 2029. People are attracted to East Renfrewshire due to the high quality of schooling in the area and also the good variety of open spaces that are available. These include the Rouken Glen and Cowan Parks and also the Whitelee Wind Farm which over 250,000 people have visited since it opened in 2009.

Recorded crime rates in East Renfrewshire are amongst the lowest in Scotland. However, like many other areas, it does have pockets of deprivation and associated social challenges. This local policing plan aims to highlight these challenges and some of the steps we intend to take to deal with them. As key partners in the East Renfrewshire Community Planning Partnership, we share the vision of making East Renfrewshire an attractive and thriving place to grow up, work, visit, raise a family and enjoy later life.*



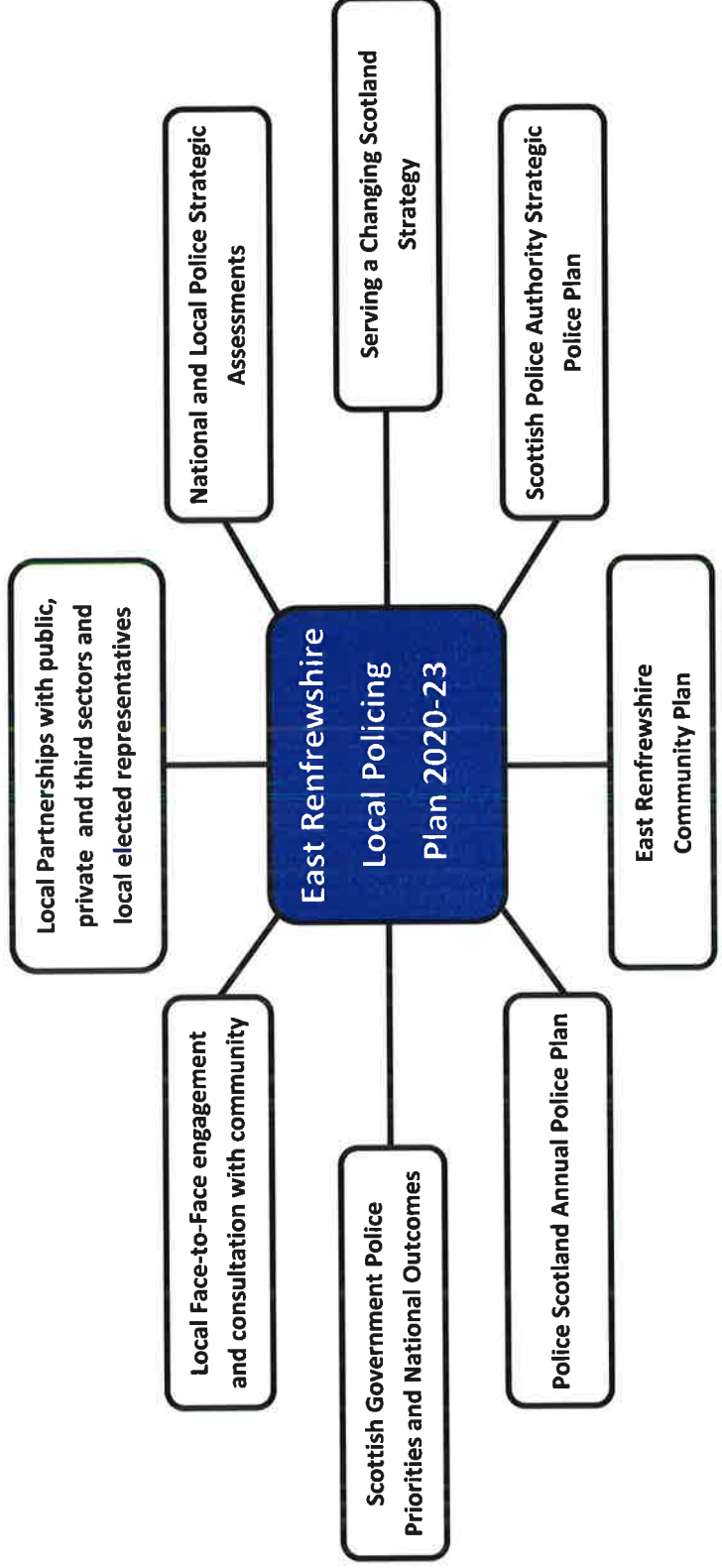
**East Renfrewshire Community Plan*

Introduction (continued)

This Local Policing Plan sets out the local policing priorities for East Renfrewshire for 2020-2023. The plan is a statutory requirement under the Police and Fire Reform (Scotland) Act 2012 and forms part of a broader planning process which takes account of the Scottish Government's vision for public services, the Police Scotland Annual Policing Plan and the Police Scotland 'Serving a Changing Scotland' Strategy. It details local and national priorities identified as being significant to the communities of East Renfrewshire and the way in which Greater Glasgow Division will respond in order to reduce the associated threat, risk and harm. This Local Policing Plan is designed to deliver positive outcomes for the people of East Renfrewshire. It is closely linked to the Fairer East Ren Plan and the Locality Plans that detail more localised responses, in different parts of the community.



Local Policing Plan Key Drivers



East Renfrewshire Community Plan

East Renfrewshire Community Planning Partnership works for and with communities to ensure that everyone has an excellent quality of life. The 'Fairer East Ren' plan, as part of the wider Community Plan, outlines 4 key themes:

- Reducing the impact of child poverty
- Improved employability
- Improving mental health and wellbeing
- Reducing social isolation, loneliness and increasing safety

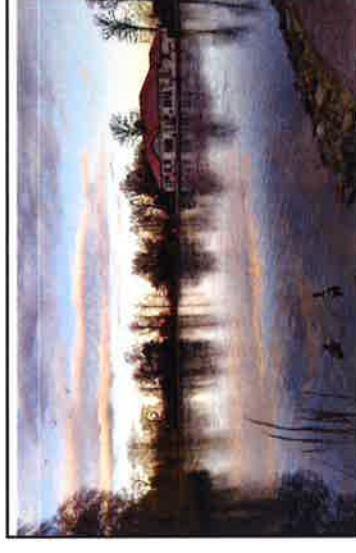
The plan outlines focus and priority areas, how these were established, and what the vision and aim is for these areas. It also evidences the importance of partnership working. Details of the plan can be accessed here — [East Renfrewshire Community Plan](#).

Policing in East Renfrewshire

Effective policing will **reduce the impact of child poverty and improve employability** by identifying individuals who are in need of support and signposting them to the appropriate agencies. Key to this are our schools based officers who work with 7 secondary schools and 23 primary schools across the Local Authority. Responding to what individuals and communities want and need, we aim to make them feel safer.

Working closely with communities, businesses and individuals and making better use of existing resources will enable true partnership responses to support ongoing work addressing longer-term underlying issues. Poor mental health can have a devastating effect on people and by raising awareness and maximising opportunities to refer individuals to vital support services, we **will improve mental health and wellbeing**.

Greater Glasgow Division is committed to achieving and promoting a culture where people are treated with dignity and in line with our own core values of integrity, fairness, respect and human rights. We are committed to reducing the harm caused by crime and antisocial behaviour which can have a lasting effect on people leaving them feeling vulnerable and isolated. By tackling those responsible and providing support to victims, we aim to **reduce social isolation, loneliness and increase safety**.





POLICE
SCOTLAND
Keeping people safe

POILEAS ALBA

East Renfrewshire Local Policing Plan 2020-2023

Our vision: Policing for a safe, protected and resilient East Renfrewshire
Our purpose: Improve the safety and wellbeing of people, places and communities in East Renfrewshire
Our values: Fairness. Integrity. Respect. Human Rights

Our local policing priorities

Crime
Reducing crimes of greatest concern and detecting offenders

Protecting Vulnerable People
Working with partners and the most vulnerable to reduce risk

Our areas of focus

Violent Crime Crimes of Dishonesty Disorder and Antisocial Behaviour Cyber Crime

Hate Crime Drug Supply and Manufacture Road Safety Sexual Offences

Domestic Abuse Adult Protection Substance Misuse Young People

Missing People Vulnerable Road Users Human Trafficking Child Protection

Focusing on our local policing priorities, we aim to deliver the positive outcomes highlighted, whilst promoting fairness in our communities and improved quality of life for residents to feel safe, included and socially connected.

Outcomes

The needs of local communities are addressed through effective service delivery

Threats to public safety and wellbeing are resolved by a proactive and responsive police service

The public, communities and partners are engaged, involved and have confidence in policing

Police Scotland is sustainable, adaptable and prepared for future challenges

Our people are supported through a positive working environment enabling them to serve the public

Local Policing Priority:

CRIME

Our focus is on reducing crimes that cause greatest concern and on detecting those responsible. In East Renfrewshire we will be focused on:

Violent Crime : We will ensure our officers are effectively deployed as part of our Tasking and Coordinating approach in priority locations. We will exploit investigative opportunities to bring offenders to justice. We will proactively manage known violent offenders in the community and we will make appropriate use of legislation and other more immediate options e.g. Fixed Penalty Notices.



Crimes of Dishonesty : We will identify crime patterns in relation to robbery, housebreaking and other acquisitive crimes. We will deploy specialist officers to ensure a knowledge of offences and offenders is developed and every effort is made to prevent crime by target hardening, raising awareness and engaging known offenders.



Disorder and Antisocial Behaviour : We will engage with partner agencies to ensure that licensed premises are operating in a responsible manner and not selling alcohol to young people. We will maximise opportunities to reduce disorder and antisocial behaviour through our weekly Greater Results in Partnership meeting.

Cyber Crime : We will adapt to improve our response to cyber crime investigations. Key areas of focus include online child sexual exploitation, cyber bullying and sophisticated organised cyber frauds.



Local Policing Priority:

CRIME

Our focus is on reducing crimes that cause greatest concern and on detecting those responsible. In East Renfrewshire we will be focused on:

Hate Crime : We will deliver our ambitious Equality Action Plan in line with Police Scotland's Equality Outcomes. We will identify vulnerable communities and will provide appropriate advice, guidance and support. We will refer victims to appropriate support agencies and partners.



Drug Supply and Manufacture : We will continue to gather intelligence and enforce legislation to arrest those involved in the supply of controlled drugs. We will target those responsible for the manufacture and distribution of controlled drugs to reduce their availability and prevent harm in our communities.



Road Safety : We will robustly enforce road traffic legislation to influence driver behaviour and improve safety on the roads. We will utilise intelligence and analytical products to identify repeat offenders and will target individuals who drive whilst disqualified or under the influence of alcohol or drugs.

Sexual Crimes : We will work closely with partners to encourage victims to report offences. We will utilise specially trained staff to engage with victims, to ensure all available support is provided and a dedicated unit will oversee the management of offenders in the community.

Local Policing Priority:

PROTECTING VULNERABLE PEOPLE

Our focus is on working with partners and the most vulnerable to reduce risk. In East Renfrewshire we will be focused on:

Domestic Abuse : We will continue to work closely with partners to encourage victims of Domestic Abuse to come forward and ensure they are fully supported. We will robustly target serial perpetrators of domestic abuse to ensure they are brought to justice and we will exploit legislation to reduce the vulnerability of victims or potential victims.



Adult Protection : We will ensure a multi-agency approach to adult protection to ensure vulnerable people are protected and supported. We will use all legislation available to enable us to better protect vulnerable people from exposure to danger and abuse. Some examples of vulnerable people include those whom are reported missing, elderly members of the community and those suffering from mental health issues.



Substance Misuse : We will progress priority work streams as part of a public health led approach within the Alcohol and Drug Partnership in line with Police Scotland's Drug Strategy. We will further develop effective approaches to assertive outreach and diversion such as the Positive Outcomes Project. We will provide methodical Senior Investigating Officer led investigations where deaths have occurred.

Young People : Police Scotland Youth Volunteers will continue to provide positive opportunities for young people. Campus officers will continue to maximise awareness raising opportunities of matters which may affect our young people. Prevention work continues with vulnerable young people to divert them from crime and provide alternatives, working in partnership with statutory and third party agencies.

Local Policing Priority:

PROTECTING VULNERABLE PEOPLE

Our focus is on working with partners and the most vulnerable to reduce risk. In East Renfrewshire we will be focused on:



Missing People : We will treat each missing person investigation proportionately with appropriate levels of priority and resources, through ongoing assessment of the risk posed by the missing person to themselves or to other members of the public. This includes people reported missing from local schools and care homes.



Vulnerable Road Users : We will utilise media platforms to educate the public about road safety initiatives. We will undertake planned activity to reduce the vulnerability of specific sets of road users. We will continue to work with the Roads Department and other partner agencies to improve road safety around schools.

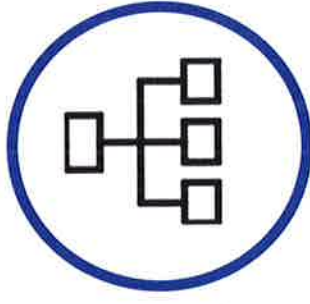


Human Trafficking : We will ensure that first responders are aware of the indicators that a person may have been trafficked and take appropriate action. We will develop a dedicated team to tackle Human Trafficking. The team will work closely with partners and will target those responsible for organising or directing Human Trafficking, whilst ensuring victims are fully supported and protected.

Child Protection : We will work with public bodies and organisations as Corporate Parents to ensure vulnerable children are safeguarded and supported. All child protection concerns reported to Police Scotland will be thoroughly investigated. In addition, we are committed to sharing information with other agencies to protect children, providing support and intervention when required.

Local Policing Delivery

The area this plan relates to is the East Renfrewshire Local Authority which, together with East Dunbartonshire and Glasgow City, are covered by the Greater Glasgow Policing Division. The Division is led by a Local Police Commander (Chief Superintendent) who is supported by six Superintendents. This command team is supported by nine Area Commanders, and their respective teams, who are responsible for delivering the Local Policing Plans in their geographical commands.



The model for policing incorporates Local Policing Teams who respond to community information and provide preventative and reassurance policing. They are supported by Local Problem Solving Teams who tackle ongoing concerns and more protracted community issues. The Area Commanders are supported by two Detective Superintendents and four Detective Chief Inspectors who lead teams investigating serious crime, public protection and serious and organised crime groups. They also work with dedicated Detective Inspectors in their respective areas and have access to national specialist resources when required.

The Division also benefits from a number of School Campus Officers who service both secondary and primary schools where they provide safety advice, deal with criminal matters that arise within the school environment and work closely with partners providing early and effective intervention. A Local Authority Liaison Officer is embedded in the Council Headquarters and works with the Local Authority to deliver Community Planning Priorities.



Scrutiny Arrangements

The Police and Fire Reform (Scotland) Act 2012 provides a framework for local scrutiny and engagement arrangements between Police, Fire and Rescue Service and the Local Authority. The current format has been in place since April 2013 and will continue with quarterly meetings where the Local Policing Commander supported by the Area Commanders presents a report to the Local Authority outlining police performance measured against the Local Policing Plan. This provides opportunities for locally elected members to examine and hold police to account in relation to the delivery of local policing services.

Local Contact Details

Police Scotland	Police Scotland
Giffnock Police Station	Barrhead Police Station
4 Braidholm Road	Main Street
Giffnock	Barrhead
G46 6HA	G78 2RA

Dial **999** for an emergency that requires urgent Police attention;

For non-emergency contact, call **101**, the single non-emergency number;

If you have information about crime in your area and wish to provide it anonymously, call **CRIMESTOPPERS** on **0800 555111**;

Service users who are deaf or have a hearing impairment can contact Police Scotland via **TextRelay** on **18001 101** for non-emergency, or **18000** in an emergency.

For more detailed information on how to contact your Local Policing Team please refer to the 'Your Community' section of the Force website at <http://www.scotland.police.uk/your-community/>

We will continue to keep in touch with you to keep you updated on the ongoing work being done to tackle the issues that are affecting life for you and your community.

You can also follow us on the following social media sites:



[@http://www.twitter.com/GreaterGlasgPol](http://www.twitter.com/GreaterGlasgPol)



[@Greater Glasgow Police Division](https://www.facebook.com/GreaterGlasgowPoliceDivision)