

Department of Corporate and Community Services

Deputy Chief Executive: Caroline Innes BSc (Hons)

Council Headquarters, Eastwood Park, Giffnock, East Renfrewshire, G46 6UG

Phone: 0141 577 3000 Fax: 0141 577 3834

website: www.eastrenfrewshire.gov.uk

Date: 6 September 2019

When calling please ask for: Eamonn Daly (0141-577-3023)

e-mail: eamonn.daly@eastrenfrewshire.gov.uk

TO: Provost Fletcher; Deputy Provost Cunningham; and Councillors Aitken, Bamforth, Buchanan, Convery, Devlin, Gilbert, Grant, Ireland, Lafferty, Macdonald, McLean, Merrick, Miller, O’Kane, Swift and Wallace.

EAST RENFREWSHIRE COUNCIL

Please find attached the undernoted item marked “copy to follow” on the agenda for the meeting of the Council on **Wednesday 11 September at 7.00 pm.**

Yours faithfully

Caroline Innes

C INNES
DEPUTY CHIEF EXECUTIVE

Undernote referred to

- 15. Early Years Strategy Update – Joint Report by Chief Officer – HSCP and Director of Education.**

BLANK PAGE

EAST RENFREWSHIRE COUNCIL

11 September 2019

Report by Chief Officer Health & Social Care Partnership & Director of Education

EARLY YEARS STRATEGY UPDATE

PURPOSE OF REPORT

1. To provide an update on progress made in implementing the Early Years Strategy action plan and identify next steps.

RECOMMENDATIONS

2. The Council asked to note the progress made to date and approve the next steps identified within the report.

BACKGROUND

3. In March 2018 Council approved the Early Years Strategy Action Plan which had been developed by the Children's Improvement Collaborative Key Change Group (formerly the Early Years Planning Group) to take control and drive improvements that support the delivery of Community Plan Strategic Outcomes "All children in East Renfrewshire experience a stable and secure childhood and secure".

4. Our contributions to achieve the intermediate outcomes are set out below:
Parents provide a safe, healthy and nurturing environment for their families

- Targeted interventions to increase the confidence of parents most in need of support
- Accessible and effective support for families to reduce the impact of financial pressures on children
- Engaged communities and increased opportunities for involving parents
- Increase in activities which support prevention and early intervention, improve outcomes and reduce inequalities

Our children are healthy, active and included

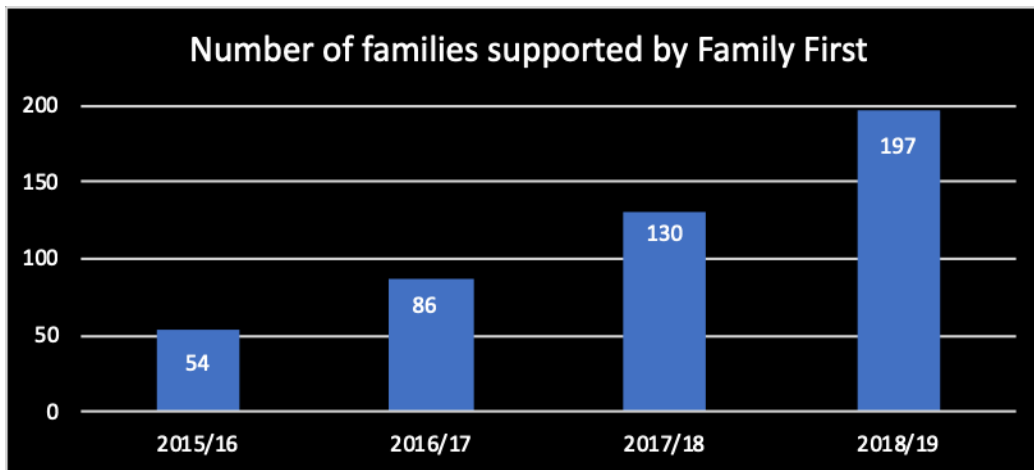
- Improve maternal health and wellbeing
- Children receive high quality early learning and childcare

REPORT

Targeted interventions to increase the confidence of parents most in need of support

5. The Family First workers, introduced in 2015, and scaled up in 2017, have continued to provide vital support to families across East Renfrewshire with workers based in Barrhead / Neilston, Thornliebank, Busby and Newton Mearns. Chart 1 below shows the increase in the number of families supported each year since the Family First service was introduced.

Chart 1



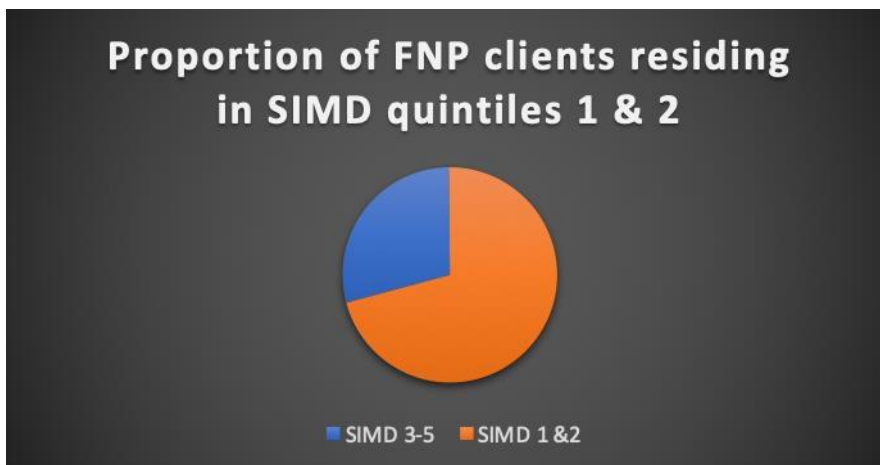
6. The team supported 197 families from April 2018 to March 2019, 39% of these families reside within East Renfrewshire's least affluent communities. There was an encouraging increase in self-referrals rising from 35 to 50, which demonstrates the accessibility of the service to families within their community. Notifications from Health Visitors almost doubled for the same period, ensuring that families get the help they need at the earliest opportunity. Support with parenting continues to be the main issue for families seeking a little bit of help.

7. One member of staff received training on Sleep Counselling, which enabled her to support parents using cognitive and behavioural approaches to sleep for children with additional support needs. 35 families benefitted from this support, of these, 13 families completed a pre and post sleep disturbance index which demonstrated a 100% success rate. Qualitative data from parents highlighted the impact of sleep on the whole family, and noted improvements in children's behaviour, that children were more alert in the morning and teachers commented that they were more engaged with their learning.

8. Family First carried out a test of change to introduce a new assessment of wellbeing. The Family Wellbeing Scale (FWS) was used to evaluate impact of their service with families. This tool was developed by a Senior Educational Psychologist and has been shared on the National Improvement Hub as an example of good practice by Education Scotland. 66% of families showed improvement in wellbeing after intervention and support by Family First. In addition, 96% of families supported by the Family First Service reported that the support they received had prevented their problem from getting worse, bigger or more complicated.

9. Family Nurse Partnership (FNP) provides age targeted support for pregnant young women under the age of 19 at last menstrual period. In East Renfrewshire 28 clients enrolled in the programme to date with an impressive 85% engagement rate which is significantly above the 75% national target. 71% of the clients were from SIMD 1 and 2 as shown in chart 2 below.

Chart 2

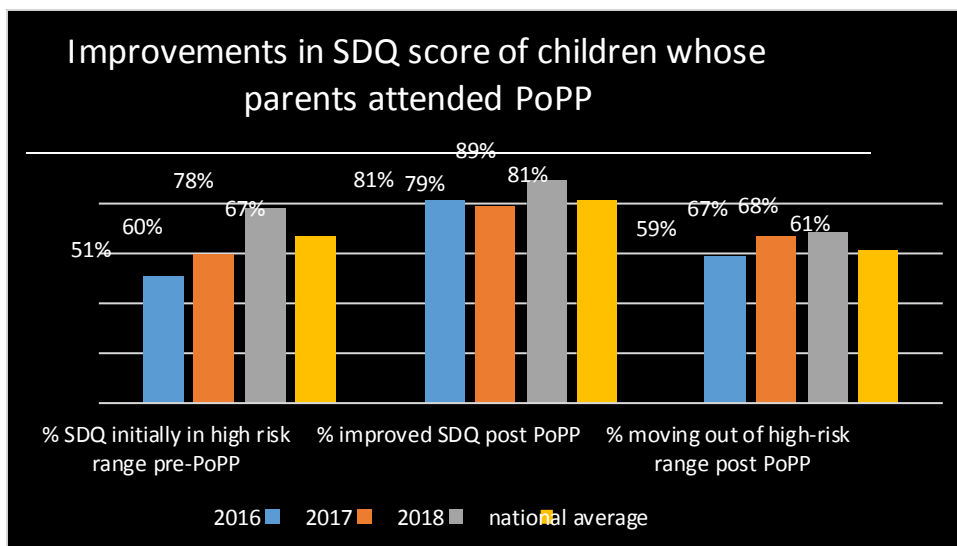


10. FNP continues to evaluate positively within East Renfrewshire. Only one client has ever voluntarily left the programme and the engagement rate of 85% of clients continues to remain well above the national average. FNP contributed to a Scottish Government evaluation of the programme which explored client journeys and impact on children and adults. This report was due to be published end of June 2019 and the interim feedback has proven to be positive.

11. Our commitment to the Psychology of Parenting Project (PoPP), which was developed with NHS Education for Scotland, to improve access to evidence based parenting programmes continues despite the national funding ceasing in 2018. To enable parenting support to continue within available resources, the number of groups offered to parents was reduced.

12. Since 2018 there has been a greater focus on engaging the most appropriate families Chart 3 below illustrates the improvements reported by parents who engage with PoPP. In 2018, the percentage of children initially in the high-risk range in East Renfrewshire was 11% higher than the national average of 67%.

Chart 3



13. Feedback from the National PoPP Director highlights the excellent work of practitioners delivering PoPP in East Renfrewshire through their engagement with and retention of the families for whom PoPP groups are specifically targeted. Following their participation in a group, those families are achieving significant improvement. East Renfrewshire continues to exceed expectations compared to national data in delivery of PoPP as shown in chart 2 above.

14. This data shows that the focus on engaging the families most in need of support has been successful and demonstrates the benefits of engaging with PoPP. A range of qualitative data from parents, PoPP practitioners and partner professionals also demonstrates the positive impact of PoPP on families across East Renfrewshire including improved relationships, a thirst for learning and enhanced quality of family life. The evidence base for PoPP focuses on children aged 2-6 years old, however families with older children (up to 8 years of age) have also reported benefits for children of this age group.

15. Mellow Ability is a parenting programme that aims to support parents and their children with additional support needs to enjoy resilient, emotionally thriving family lives. Parents of children with significant additional support needs between the ages of 4 and 7 are invited to attend a 14 week course with the aim of decreasing social isolation; supporting families under pressure to build upon their parent-child and family relationships; and creating opportunities to enhance children's social and emotional development.

16. As a pilot authority, East Renfrewshire collaborated with Mellow Parenting to develop the Mellow Ability programme and evaluate its effectiveness. Since 2018, 10 East Renfrewshire parents have attended a Mellow Ability course. Evaluation results have highlighted improvements across a range of parent and child measures. For parents these include reduced reports of symptoms of depression, anxiety and irritability; enhanced understanding of behaviour and improved confidence in managing behaviour; improved quality of life; and stronger family relationships. Parents also reported a reduction in their children's negative behaviours and an increase in positive behaviours. Qualitative data highlighted the additional enjoyment and benefits gained from attending the group such as developing social connections and gaining advice and ideas from other parents of children with additional support needs.

17. Barnardo's Cygnet Programme aims to improve outcomes for children and young people by increasing parental confidence in positively supporting behaviours associated with an Autism Spectrum Condition. The aims and principles of Cygnet are consistent with GIRFEC (Getting it Right for Every Child) and East Renfrewshire's tiered model of support. The research base has shown that Cygnet leads to:

- increased parent's confidence particularly in positively managing behaviour associated with Autism
- sustained improvements (at 6 months post group) including improved parenting satisfaction and specific child behaviour goals

18. Cygnet was introduced to East Renfrewshire in 2016 as a means of providing post diagnostic support for parents whose children were diagnosed by East Renfrewshire Autism Diagnostic Team (ERADT). The programme has been offered to the parents of 221 children and young people with 114 families attending one of the 15 programmes that have been delivered. Since January 2018 all parents have been offered the opportunity to attend a programme within one year post diagnosis.

19. Locally the programme has been highly rated by parents. The data obtained so far from self-report measures includes the following:

- An increase in parents' knowledge and understanding of ASD
- Increased peer support
- Reduced isolation
- An understanding of the function of their child's behaviour
- increased knowledge of strategies to address challenging behaviours

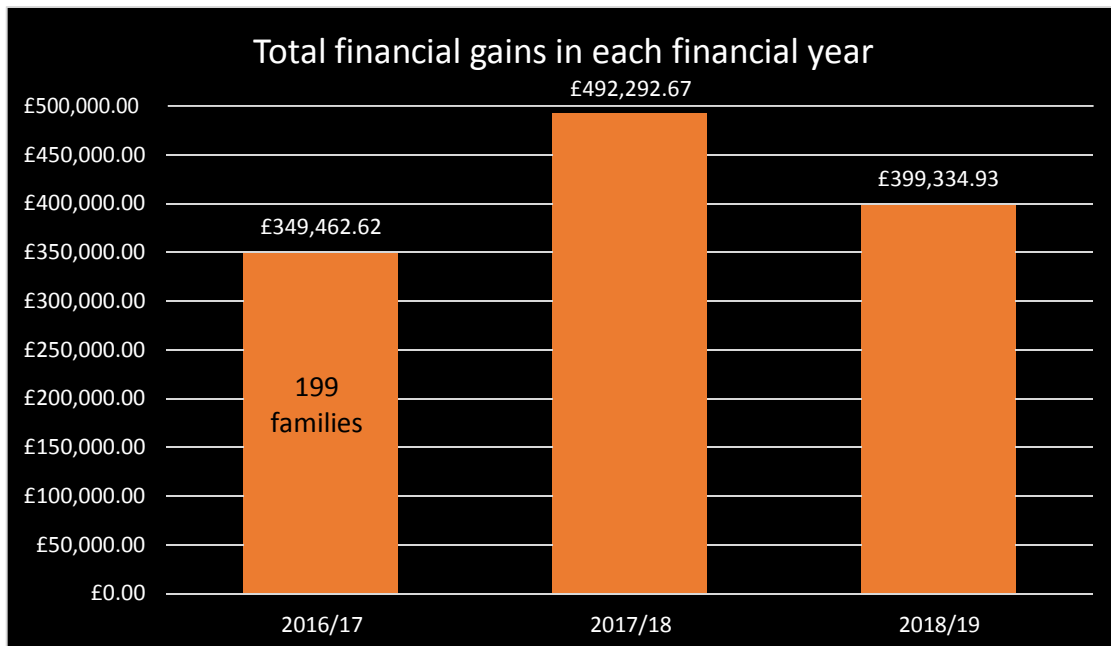
Accessible and effective support for families to reduce the impact of financial pressures on their children

20. The Money Advice and Rights team has generated close links with colleagues in the Department for Work and Pensions (DWP) to increase support for residents with ongoing issues around Universal Credit and other benefits. This has included training for a range of staff across the council and partners. MART has consolidated further partnerships to provide financial advice and support for residents such as:

- Citizens Advice Bureau
- East Renfrewshire Culture and Leisure Trust
- Talking Points
- Citrus Energy
- Food Share

21. Over the last three years many families have benefitted from support provided by the Income Maximisation Officer. Chart 4 below provides detail of the total financial gains in each financial year. This represents new income for families as a direct result of the advice and support they have received from MART and has contributed to alleviating poverty across East Renfrewshire.

Chart 4



Engaged communities and increased involvement for parents

22. Adult Learning services continue to engage with staff and parents in Early Learning and Childcare settings to offer bespoke learning opportunities. Working closely with centre staff they have delivered Positive Living and STEPS personal development courses for parents at their request. Many of these parents ask for more learning opportunities, having completed a PoPP programme. The planning and review processes of the Adult Learning service enables their staff to support and signpost based on an individual's needs and aspirations. Parents have progressed to employment, volunteering and accredited college courses run in partnership with West College Scotland.

23. Grow 10 initiative was developed in response to findings from local data analysis showing that Barrhead has proportionately fewer parenting groups than other areas in the authority. It is a key aim within the both the Early Years and Community Learning and Development Strategies and is also linking to locality plans in the Barrhead area.

24. The Communities Team continue to support four local groups to become self-sustaining:

- Barrhead Mutha Bubbas;
- Dunterlie Baby & Toddlers;
- ARC Baby & Toddlers;
- The Green Giggles.

The Green Giggles was supported as a pilot project over 2018 which was set up to fill a gap in demand for environmental and early years needs in Dunterlie. Due to the nature of this group it does not run all year round. Depending on demand and need from the community this will be re-established.

25. Dunterlie Baby & Toddlers now runs independently since they made a successful bid to the Better Barrhead fund to support Parenting Matters training. This has improved participants' parenting skills, increased their confidence, encouraged peer support and has had a positive impact on children's behaviour and independence. The parent chair of the group was recently shortlisted by Barrhead Housing Association for Parenting Network Scotland's Community Parent Award.

26. ARC Baby and Toddlers group (supported by Auchenback Active Board Ltd) also runs independently and received funds from Better Barrhead to pay for lets until March 2020 and increase the range of activities for children including arts and an annual trip.

27. All our ELC establishments continue to offer excellent support and services for families. 100% of establishments have achieved Family Friendly Status at bronze level. 100% of local authority Early Learning and Childcare establishments have achieved Family Centred status at silver level as well as 52% of Primary Schools and 50% funded providers. Two Early Learning and Childcare establishments have achieved Family Focused gold accreditation with a further 10 establishments applying to achieve gold by summer 2020. A working party has created a draft Family Centred Approaches self-evaluation framework for secondary schools which will be launched later in the year.

28. Workforce training in 'Connecting with Parents' has been undertaken with 50 staff within the last academic year. There was an improved balance between staff from different sectors with 28 (56%) from education / early learning and childcare establishments, including 4 funded providers, and 22 from HSCP (44%).

29. The aim of Connecting with Parents training is to improve the engagement and enrolment of parents/carers to support evidence-based parenting groups. The evaluations were consistently positive with staff increasing their confidence in eliciting change talk when engaging with parents to improve outcomes.

30. The Places to Play programme has been developed by the Communities Team, following the success of the original test of change in 2017/18. This programme is led by local parents and carers in Barrhead, 6 of whom participated in the play training provided by PEEK in 2018; further development activity in the local community took place in summer 2019. The aim is to build capacity amongst the parents/carer group, so that they will take ownership of the Places to Play programme with ad-hoc support from the Communities Team to bring external funding for further parent training and ensure sustainability of the programme.

31. The Environment Department has been focusing on a range of improvements to Carlibar, Crossmill and Cowan Parks in Barrhead since 2017. In 2018-2019 the Communities Team supported the involvement of local residents in decision making on the future of Cowan Park. A range of engagement activities took place with participation from a range of representatives and partners. This group created a survey with a separate version for young people to provide detailed evidence of the needs and aspirations of the Barrhead Community which will shape the future of Cowan Park.

Young Person's Services continue to deliver targeted interventions across East Renfrewshire aimed at postponing pregnancy in young people through RespectER. There are currently approximately 20 young people engaged in this programme.

32. Following a successful pilot of YPS Understanding Parenting Programme it has now been delivered to over 100 young people in Barrhead High School. As a result, this programme is now embedded within the PSHE Curriculum and will be delivered to all S4 pupils throughout the school academic year 19/20. This programme aims to increase young people's understanding of the roles and responsibilities of becoming a parent and to reinforce the importance of a positive approach to parenthood.

Increase in activities which support prevention and early intervention, improve outcomes and reduce inequalities

33. Book bug sessions take place in East Renfrewshire libraries every week. During 2018-19, 1008 sessions were delivered in libraries. The number of participants was 21,503 children and 20,390 adults.

Table 1 Attendance at Bookbug sessions across East Renfrewshire Libraries.

Venue	Sessions	Children Attending	Adults Attending
Barrhead Foundry	144	3229	3293
Busby Library	96	2575	2181
Clarkston Library	144	3553	3425
Eaglesham Library	96	1658	1521
Giffnock Library	144	4037	3837
Mearns Library	192	4739	4512
Neilston Library	96	1011	976
Thornliebank Library	96	701	645

34. The Smart Play Network - Play, Talk, Read tour visited East Renfrewshire during the week 4 – 8 February 2019 across five venues within East Renfrewshire. The Smart Play Network has provided the following attendance data:

Table 2



EAST RENFREWSHIRE 4TH FEBRUARY – 8TH FEBRUARY 2019

Date	Address	SIMD Area	Vehicle	Children	Practitioners	Male's	Female's	Families
04/02/2019	The Avenue Shopping Centre, 250 Ayr Rd, Newton Mearns, G77 6AA	Not in SIMD	PTR 2 (Bonnie)	110	1	11	96	70
05/02/2019	Eaglesham Library, Montgomerie Hall, Gilmour St, Eaglesham, G76 0LH	Not in SIMD	PTR 2 (Bonnie)	100	1	9	75	76
06/02/2019	Neilston Leisure Centre, Main St, Neilston, Glasgow G78 3NN	Next to SIMD	PTR 2 (Bonnie)	42	0	4	33	29
07/02/2019	Clarkston Halls Car Park	Not in SIMD	PTR 2 (Bonnie)	109	0	10	91	82
08/02/2019	Salvation Army Hall 201 Main Street, Barrhead, G78 1SD	In SIMD	PTR 2 (Bonnie)	19	0	2	15	15
				380	2	36	310	272

Attendance was significantly lower in postcodes adjacent to, or within the lowest SIMD deciles. The Early Years Improvement Team will work together to develop approaches to target families within these communities.

35. The Read, Write, Count initiative was launched in 2016. Each year, every child in Primary 1-3 across the authority receives a Read, Write, Count bag containing resources that parents could use to support learning in a fun way at home during Scottish Book week. To date an average of 50 families participate in Read Write Count sessions each month across the libraries service.

36. A multi-agency improvement team has worked with the Scottish Government Improvement Advisers to improve uptake of places for eligible two year olds through raising awareness and enhanced communication. From November 2018, parents in two key establishments serving the most vulnerable communities, Arthurlie Family Centre and McCready Family Centre have become champions, supporting and promoting this work with

other parents. Furthermore Adult Learning Service has worked with the DWP manager in Barrhead to raise awareness of free early learning and childcare. To date 11 more eligible children have accessed a nursery place due to this integrated working, Total?

37. The Sir Harry Burns centre opened in Auchenback in November 2017. A range of supports for families have been provided in the centre since that time. The Barrhead Baby Café relocated to the Sir Harry Burns Centre and continues to run weekly sessions offering breastfeeding support for parents provided by the National Childbirth Trust and health professionals. A weekly first time mums group also operates in the centre, supporting new mums to meet other parents within their local community.

38. Within the Sir Harry Burns Centre parents have had the opportunity to participate in a wide range of opportunities provided by various services including Adult Learning, Health Visitors, Social Workers, Speech and Language Therapists, Health Improvement workers, Impact Arts, PoPP practitioners and family centre staff. The range of activities have supported parents to develop parenting skills, employability skills, and improved access to supports within their local community. Drop in services for parents include Family First, Fair Share food distribution, Food and Growers Network and Back to School Bank.

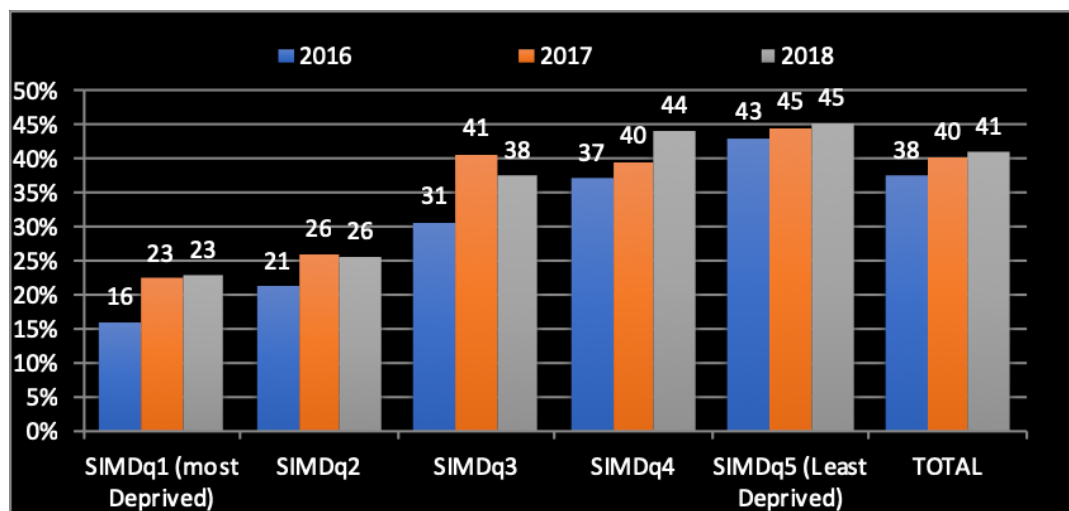
Improve maternal health and wellbeing

39. Most recent smoking in pregnancy data (July 2017 – June 2018) indicates a rate of 18.1% of East Renfrewshire residents smoking at booking across our most deprived areas compared to 18.8% across NHSGGC. This is down from 24.2% in December 2016. There is still a wide gap between all recorded smoking at booking across East Renfrewshire as a whole (5.8% July 2017 – June 2018) and our most deprived communities, indicating a requirement for targeted intervention.

40. East Renfrewshire has some of the highest breastfeeding rates in Scotland. Data for 2017/18 showed that 53% of women were doing some form of breastfeeding (Breastfeeding and mixed) at the 6-8 week Child Health Review and 40% were breastfeeding exclusively. This compares to 31% exclusive breastfeeding at 6-8 weeks for Scotland as a whole. The overall breastfeeding rates for East Renfrewshire have remained relatively stable over the last 3 years.

41. There continues to be a marked contrast in exclusive breastfeeding rates between the least and most deprived communities, within East Renfrewshire; a trend which is repeated across all local authority areas, as shown in Chart 5 below:

Chart 5 - Exclusive Breastfeeding at 6-8 week in East Renfrewshire



42. Due to resource from the Early Years Change Fund and effective partnerships between health visiting and health improvement, significant improvements have been made over the previous 24 months. The introduction of the enhanced pathway of breastfeeding support for women living in SIMD areas 1 and 2 has supported this significant increase in breastfeeding rates within the most deprived communities.

43. A review of the enhanced pathway was completed for babies born between August 2018 to March 2019. Of those mothers engaging with the service, 80% were exclusively breastfeeding at 6-8 weeks. The corresponding rate of exclusive breastfeeding in mothers who did not engage with the pathway was 60% demonstrating the success of the enhanced pathway intervention. In addition, two breastfeeding support groups continue to be delivered in each of the Barrhead and Eastwood localities.

44. East Renfrewshire HSCP Health Visiting Service was accredited as a Gold Baby Friendly Service by UNICEF UK. This accreditation was awarded in June 2018 and revalidated in June 2019 for excellence in the support of infant feeding and parent infant relationships.

45. Data from the National Dental Inspection Programme (NDIP) shows that children in East Renfrewshire have generally better levels of oral health than the average for Scotland and NHS GG&C. The most recent NDIP inspection published in October 2018 shows that 82.6% of primary 1 pupils had no obvious decay experience. This shows a marginal increase from 79.8% in 2016. The same figure for NHS GG&C in 2018 was 67.7%.

46. In terms of oral health inequalities dental decay rates are higher in children living in the most deprived areas in East Renfrewshire. For the same time period, 53% of P1 pupils in SIMD 1 & 2 quintiles had obvious signs of dental decay compared to only 10% of children living in our least deprived (SIMD 5) areas.

47. Early registration with a dentist is key in embedding good oral health habits and facilitates participation in oral health programmes. Data published from Information Services Division (ISD, September 2018) shows that 91% of children aged 3-5 are registered with a dentist. The proportion of very young children (0-2 years) registered with a dentist is much lower at 53%. Improvement work is beginning in 2019 to increase dental registration in the 0-2 year's group.

48. All nurseries and primary 1 classes in East Renfrewshire continue to implement the Universal Childsmile Toothbrushing programme. All families are offered a Childsmile Home Visit before their child is 16 weeks old. Targeted oral health activity is directed based on NDIP data.

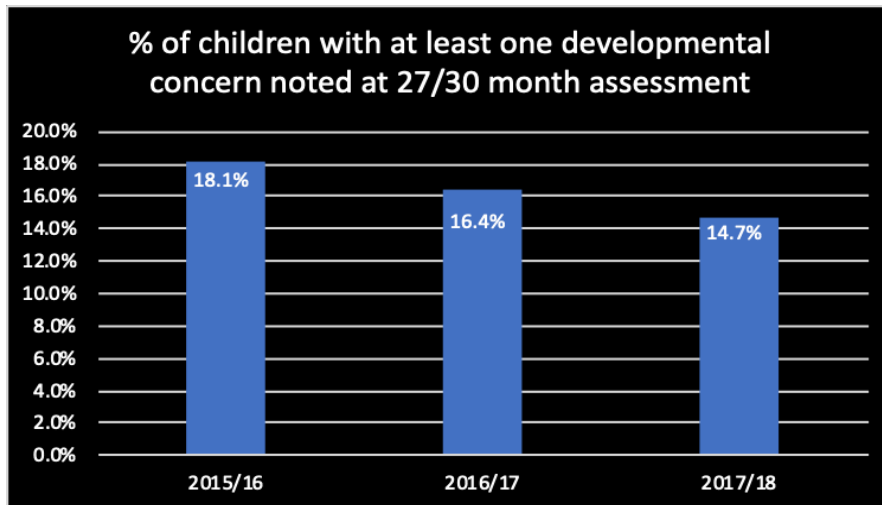
Children receive high quality early learning and childcare

49. Current East Renfrewshire data for 2017/18 demonstrates 95.0% of eligible children had a developmental review at 27 – 30 months, this is an increase in coverage from 2016 / 17 when 92.5% of children had a review which in turn was up from 2015/16 when 90.4% of children were reviewed. Coverage compares favourably with the figure for NHSGG&C where 92.7% of eligible children had a developmental review. The increase reflects targeted improvement work carried out by health visiting teams.

50. Of the children who had a developmental review at 27/30 months, 2017/18 data indicated that 14.7% had at least one developmental concern noted. This is a continued reduction on previous years as shown in chart 6 below. Targeted interventions have been used to support children and families where developmental concerns have been noted such

as referral to PoPP and early access to Early Learning and Childcare.

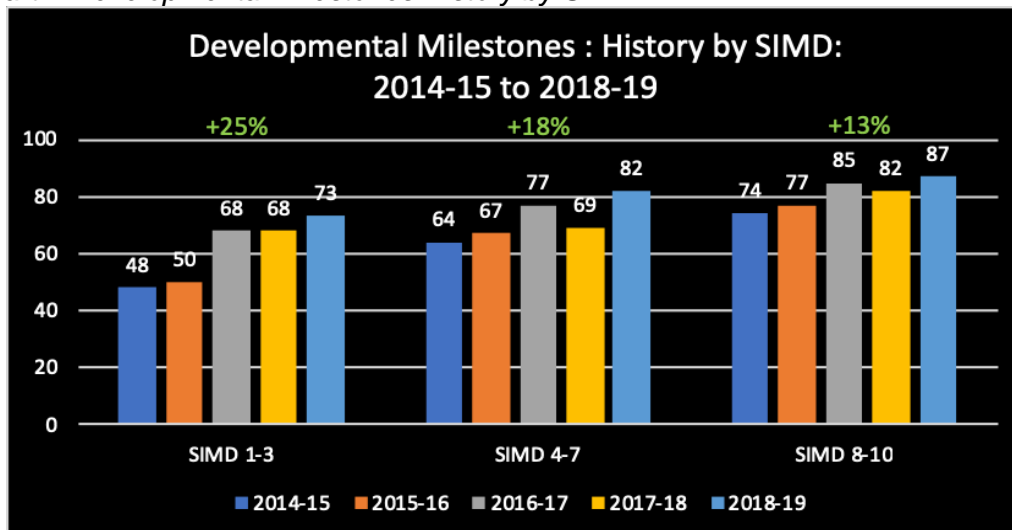
Chart 6



51. Using a wider set of components to assess children’s progress on entry to Primary school, there has been an increase in the proportion of children achieving their developmental milestones of 25%, 18% and 13% for deciles 1-3, 4-7 and 8- 10 respectively between 2014-2015 - 2018-19. This has contributed to a reduction in the gap between the achievement of those from the most affluent, SIMD 8-10, and least affluent, SIMD 1-3 deciles, which has decreased from around 26% in 2014-15 to 14% in 2018-19. Furthermore, only 6.8% of children were recorded as being of concern with regard to their developmental milestones.

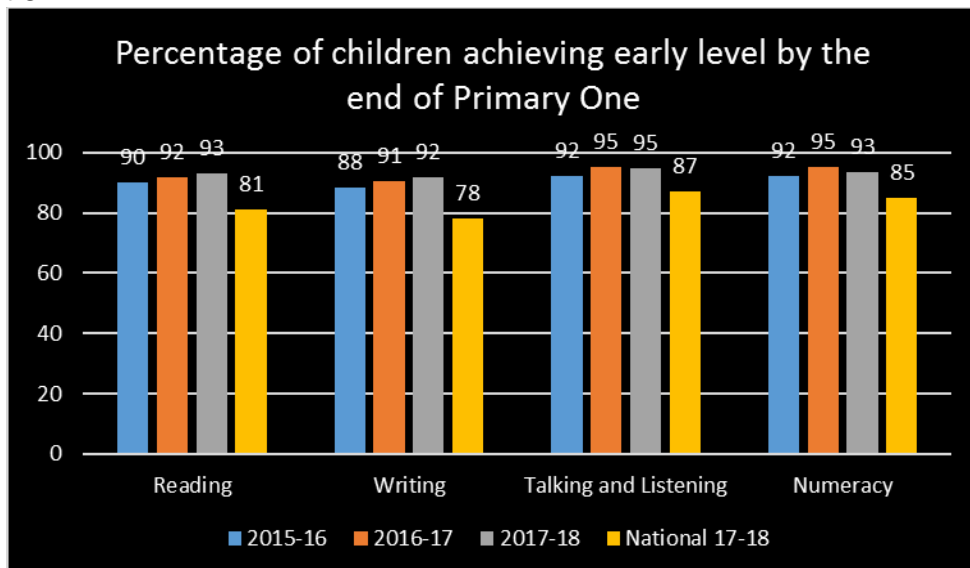
13.

Chart 7 Developmental Milestones History by SIMD



52. Data for both the developmental milestones and a baseline assessment are gathered between August – October in Primary One. The positive impact of increasingly high-quality early learning and childcare for all three and four-year olds and eligible two-year olds is making a significant contribution to children’s development and learning with most children achieving the expected levels. In addition Chart 8 below illustrates the percentage of children achieving early level of Curriculum for Excellence, as expected by May of Primary One.

Chart 8



53. This positive increase is also reflected in the proportion of children registered as entitled to free school meals and those residing in SIMD deciles 1 and 2 achieving early level within Primary One. See Table 3 below.

Table 3

	FME		SIMD 1&2		Not FME & Not SIMD 1&2	
	2015-2016	2016-2017	2015-2016	2017-2018	2015-2016	2017-2018
Reading	75%	78%	75%	83%	92%	94%
Writing	75%	78%	73%	83%	90%	93%
Talking and Listening	80%	84%	76%	83%	94%	95%
Numeracy	80%	84%	74%	87%	94%	93%

54. Effective transitions between settings and the shared understanding of developmentally appropriate practice in early learning and childcare settings and Primary One classrooms ensures that staff have detailed knowledge of individual children and are able to plan and target effectively to meet their needs. There is a strong supportive and inclusive ethos within all establishments which enables children to access the range of learning experiences provided.

55. East Renfrewshire Education Department and HSCP have collaborated in a joint initiative to support early years establishments to promote and nurture the language and communication development of all children. A multi-agency team has worked together to develop standards for all early learning and childcare (ELC) settings in relation to speech, language and communication, recognising the importance of early language development to child development, wellbeing and learning.

56. It has been a long-held aspiration of the Parenting, and subsequently, Early Years Strategy to increase the number of males working in our early learning and childcare settings to ensure positive male role models for fathers and young boys. With the growth in the early years workforce due to the Scottish Government expansion of early learning and childcare provision there has been an increase in male trainees. This year East Renfrewshire early years settings welcomed four male trainees.

Organisational Development

57. The Early Years Improvement Team will continue to lead in the implementation of the Early Years Action Plan reporting directly to the Improving Outcomes for Children Group. When evaluated the Early Years Improvement Team proved to be a strong interdisciplinary team; almost all partners attend regularly, set the agenda and give updates on critical activities to improve outcomes for children and families within East Renfrewshire.

58. The work of the Early Years Improvement Team will contribute to delivery of the Child Poverty Delivery Plan and the Integrated Children's Services plan. Three sub-groups will lead developments across the areas of focus:

- Nurtured Improvement team led by Early Years Prevention Officer
- Healthy team led by the Health Visiting Senior Nurse
- Active Improvement Team led by Culture and Leisure Trust

Next Steps

- a) Review Parenting Programmes and ensure supports available for all families.
- b) Work with partners to increase parenting capacity and understanding of child development and physical health, and the importance of play experiences for young children.
- c) Support frontline staff to recognise the signs of poverty.
- d) Support families to access safe places to play within their local communities.

FINANCE AND EFFICIENCY

59. In light of the ongoing financial pressures on core budgets the Early Years Change Fund continues to be mainstreamed to protect this essential preventative investment.

60. The collaborative approaches promoted through the Early Years Strategy are reducing duplication, modernising how we work and increasing efficiency across all partners.

61. Any other financial and efficiency matters related to the Early Years Strategy will be met from individual department's devolved budgets.

IMPLICATIONS OF THE PROPOSALS

62. The implications of the Early Years Strategy are wide-reaching; improving the way that services work together, increasing community engagement in the development of services and aligning budgets and resources to support prevention and early intervention.

CONCLUSIONS

63. We have made significant progress in implementing the strategy and have developed a vision for Early Years which is shared by staff working in all departments/HSCP. We have a firm platform for continuing to grow and develop this work. We have protected our investment in prevention over the next few years when budgets are reducing as it is recognised that we will not see the full benefit from this investment for some years.

RECOMMENDATION

64. The Council are asked to note the progress made to date and approve the next steps identified within the report.

REPORT AUTHORS

Julie Murray, Chief Officer Health & Social Care Partnership
Julie.murray@eastrenfrewshire.gov.uk

Rosamund Rodriguez, Quality Improvement Officer
Rosamund.Rodriguez2@eastrenfrewshire.gov.uk

BACKGROUND PAPERS

East Renfrewshire Early Years Strategy 2013-2018
<http://www.eastrenfrewshire.gov.uk/CHttpHandler.ashx?id=9508>

East Renfrewshire Early Learning and Childcare Strategy 2016-2020
<http://www.eastrenfrewshire.gov.uk/CHttpHandler.ashx?id=16472&p=0>

East Renfrewshire Parenting Strategy
<http://www.eastrenfrewshire.gov.uk/CHttpHandler.ashx?id=8332>

KEY WORDS

A report setting out progress to date in the implementation of the Council's Early Years Strategy.

Early, Years, Intervention, Prevention, Community Engagement, Children, Place

BLANK PAGE

Early Years Strategy 2018-2020 - Nurtured

Population Outcome
The outcome we want is....

SOA 1 All children in East Renfrewshire experience a stable and secure childhood and succeed.

Intermediate Outcome
We will know we are making good steps along the way WHEN....

ODP 1.2 Parents provide a safe, healthy and nurturing environment for their families.

Critical Indicators

% increase in improved outcomes for children on completion of parent programmes

% of parents accessing Family First service indicating an improvement in their family wellbeing

% of children with one or more developmental concern recorded at 30 month assessment

- Parenting Improvement Team
- Early Years Prevention Officer
 - Educational Psychology
 - Health Visiting Service
 - ELC Staff
 - Speech & Language Therapy
 - Family Nurse Partnership
 - Family First
 - Young Person's Services
 - Social Work
 - Adult Learning
 - MART

Our contribution
So we need to achieve is...

Increased confidence among parents in need of support, as a result of targeted interventions

Frontline staff recognise the signs of poverty

Critical Activities
By.....

- Delivering effective parenting support that helps families including:
- Family First
 - PoPP
 - Solihull Approach
 - Family Nurse Partnership
 - Mellow Ability
 - Cygnet

Implementing Universal Pathway within the Health Visiting Service to support parents with children 0-5 years with targeted interventions for those with additional requirements.

Raising awareness with staff to ensure they are able to identify signs of child poverty and are well informed about referral pathways.

Early Years Strategy 2018-2020 – Healthy

Population Outcome

The outcome we want is....

SOA 1 All children in East Renfrewshire experience a stable and secure childhood and succeed.

Intermediate Outcome

We will know we are making good steps along the way WHEN....

ODP 1.3 Children and young people are cared for, protected and their wellbeing is safeguarded

Critical Indicators

Proportion of children reaching their developmental milestones by start of P1

% of 0-2 year olds registered with a dentist

% of dental decay in P1 in our most deprived communities

% increase in breastfeeding at 6-8 weeks in most deprived data zones.

% increase in uptake of free ELC for eligible two year olds.

- Child Development, Health & Play Improvement Team
- Health Visiting Service
 - Health Improvement Team
 - Family First
 - Social Work
 - Early Years Prevention Officer
 - ELC staff
 - Educational Psychology Service
 - Adult learning

Our contribution

So we need to achieve is...

An increase in activities which support prevention and early intervention, improve outcomes and reduce inequalities.

Critical Activities

By.....

- Targeting resources to ensure:
- they are deployed to support prevention and early intervention
 - children most likely to be impacted by poverty benefit from them

- Improving the health outcomes for vulnerable children and families and reducing health inequalities through partnership working
- Child development**
- Improve data collection and information sharing following 27/30 month assessment (Practicum Team)
- Physical Health**
- Health colleagues provide advice/support to staff working with vulnerable families to ensure access to wider health improvement services and initiatives.
 - Increasing breastfeeding rates in our most deprived neighbourhoods.
- Play and Learning**
- Working in partnership to:
 - Identify eligible two year olds and optimise uptake of early learning and childcare (Practicum Team).
 - Improve delivery of Play at Home programme and resources

Early Years Strategy 2018-2020 - Active

<p>Population Outcome</p> <p><i>The outcome we want is....</i></p>	<p>Intermediate Outcome</p> <p><i>We will know we are making good steps along the way WHEN....</i></p>	<p>Our contribution</p> <p><i>So we need to achieve is...</i></p>	<p>Critical Activities</p> <p><i>By.....</i></p>
<p>SOA 2 East Renfrewshire residents are fit and active and have the skills for learning, life and work.</p>	<p>ODP 2.4 Residents are as healthy and active as possible</p>	<p>More residents are active in leisure, culture and physical activity</p>	<p>Promoting sports, culture and leisure interests among our most vulnerable children and young people</p>
	<p>Critical Indicators</p>	<p>Parks and green spaces offer residents a range of outdoor, healthy activities</p>	<p>Developing safer places to play at home and in the community:</p> <ul style="list-style-type: none"> • Scale up Let's Play • Introduce street play • Develop Places to Play project • Campaign for road safety • Promote positive behaviour of 8-16 year olds • Promote family use of social space
	<p>Number of active library borrowers aged 8 or under per 1,000 population</p>		<p>Developing collaborative approaches to improve engagement of families living in SIMD 1-3 with services including:</p> <ul style="list-style-type: none"> • Bookbug sessions in libraries • Play Talk Read bus visits • Read Write Count activities in libraries • Dollywood Imagination Library
<p>Increase the safe places to play in <u>Auchenback & Dunterlie Communities</u></p>	<p>Active Improvement Team</p> <ul style="list-style-type: none"> • Culture and Leisure Trust • Environment Department • Prevention Team • Health Improvement Team • Social Work • Early Years Development Officer • ELC staff • Young Person's Services 		

BLANK PAGE