



OCT 2019

SCHEDULE OF COUNCIL LAND OWNERSHIP
EAST RENFREWSHIRE COUNCIL



How can I find out more and submit my comments on the Proposed Local Development Plan 2 (LDP2)?

We think it is important to provide a range of ways for you to find out about the Proposed Plan, what it means for you and how you can submit your comments to us. You can keep up-to-date with the LDP progress via the Council's website.

The consultation period will run for **8 weeks until 13th December 2019**. You can access information on the Proposed Plan:

<p>Website</p>  <p>www.eastrenfrewshire.gov.uk/ldp2</p>	<p>Email</p>  <p>ldp@eastrenfrewshire.gov.uk</p>	<p>Telephone</p>  <p>0141 577 3001</p>	<p>Library</p>  <table border="0"> <tr> <td>Barrhead Foundry Library Main Street Barrhead G78 1SW</td> <td>Mearns Library Mackinlay Place Newton Mearns G77 6EZ</td> </tr> <tr> <td>Busby Library Main Street Busby G76 8DX</td> <td>Neilston Library Main Street Neilston G78 3NN</td> </tr> <tr> <td>Clarkston Library Clarkston Road Clarkston G78 8NE</td> <td>Netherlee Library Netherlee Pavilion Linn Park Avenue Netherlee G44 3PG</td> </tr> <tr> <td>Eaglesham Library Montgomerie Hall Eaglesham G76 0LH</td> <td>Thornliebank Library 1 Spiersbridge Road Thornliebank G46 7JS</td> </tr> <tr> <td>Giffnock Library Station Road Giffnock G46 5JF</td> <td>Uplawmoor Library Mure Hall Tannock Road Uplawmoor G78 4AD</td> </tr> </table>	Barrhead Foundry Library Main Street Barrhead G78 1SW	Mearns Library Mackinlay Place Newton Mearns G77 6EZ	Busby Library Main Street Busby G76 8DX	Neilston Library Main Street Neilston G78 3NN	Clarkston Library Clarkston Road Clarkston G78 8NE	Netherlee Library Netherlee Pavilion Linn Park Avenue Netherlee G44 3PG	Eaglesham Library Montgomerie Hall Eaglesham G76 0LH	Thornliebank Library 1 Spiersbridge Road Thornliebank G46 7JS	Giffnock Library Station Road Giffnock G46 5JF	Uplawmoor Library Mure Hall Tannock Road Uplawmoor G78 4AD
Barrhead Foundry Library Main Street Barrhead G78 1SW	Mearns Library Mackinlay Place Newton Mearns G77 6EZ												
Busby Library Main Street Busby G76 8DX	Neilston Library Main Street Neilston G78 3NN												
Clarkston Library Clarkston Road Clarkston G78 8NE	Netherlee Library Netherlee Pavilion Linn Park Avenue Netherlee G44 3PG												
Eaglesham Library Montgomerie Hall Eaglesham G76 0LH	Thornliebank Library 1 Spiersbridge Road Thornliebank G46 7JS												
Giffnock Library Station Road Giffnock G46 5JF	Uplawmoor Library Mure Hall Tannock Road Uplawmoor G78 4AD												
<p>Facebook</p>  <p>https://en-gb.facebook.com/eastrenfrewshirecouncil/</p>	<p>Twitter</p>  <p>@EastRenCouncil</p>	<p>Visit Us</p>  <p>2 Spiersbridge Way Spiersbridge Business Park Thornliebank East Renfrewshire G46 8NG</p>											
<p>Drop in Session</p>  <p>Details to follow - See posters and leaflets in community halls, local notice boards, newspapers and online</p>	<p>Story Map</p>  <p>https://arcg.is/18fi4u</p>												

For ease of use we would encourage you to submit responses electronically where possible.

You can comment on the Proposed Plan by:

Going online and completing our online representation form.

www.eastrenfrewshire.gov.uk/ldp2

Download a representation form in Word, complete it and email it to:

ldp@eastrenfrewshire.gov.uk

OR

Print your completed representation form and post it to:

Strategy Team
Council Offices
2 Spiersbridge Way
Spiersbridge Business Park
Thornliebank, G46 8NG



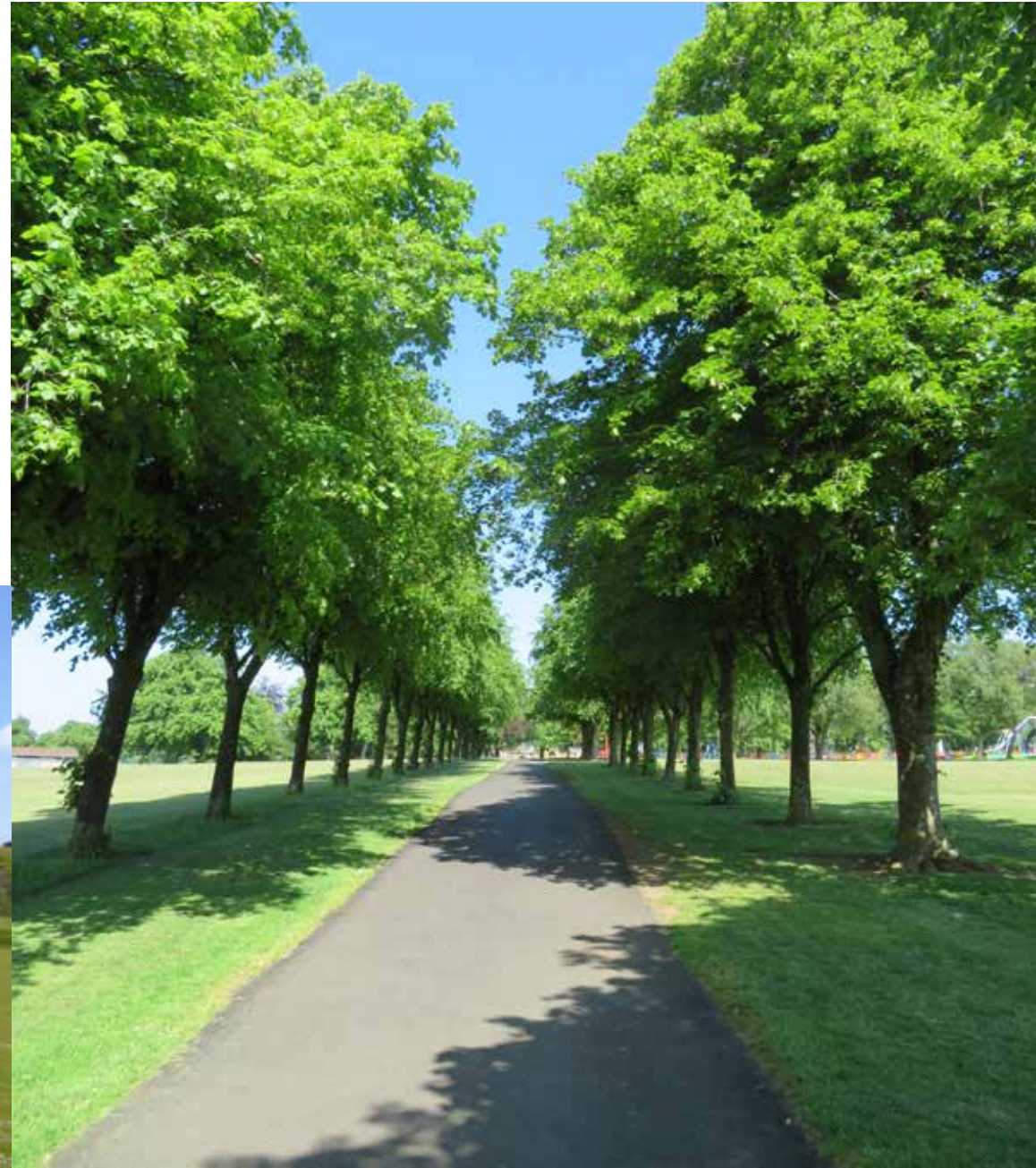
Contents

Schedule of Land Ownership	6
Map 1: Levern Valley	7
Map 2: Eastwood North	8
Map 3: Eastwood South	9
Land Ownership Schedules	10

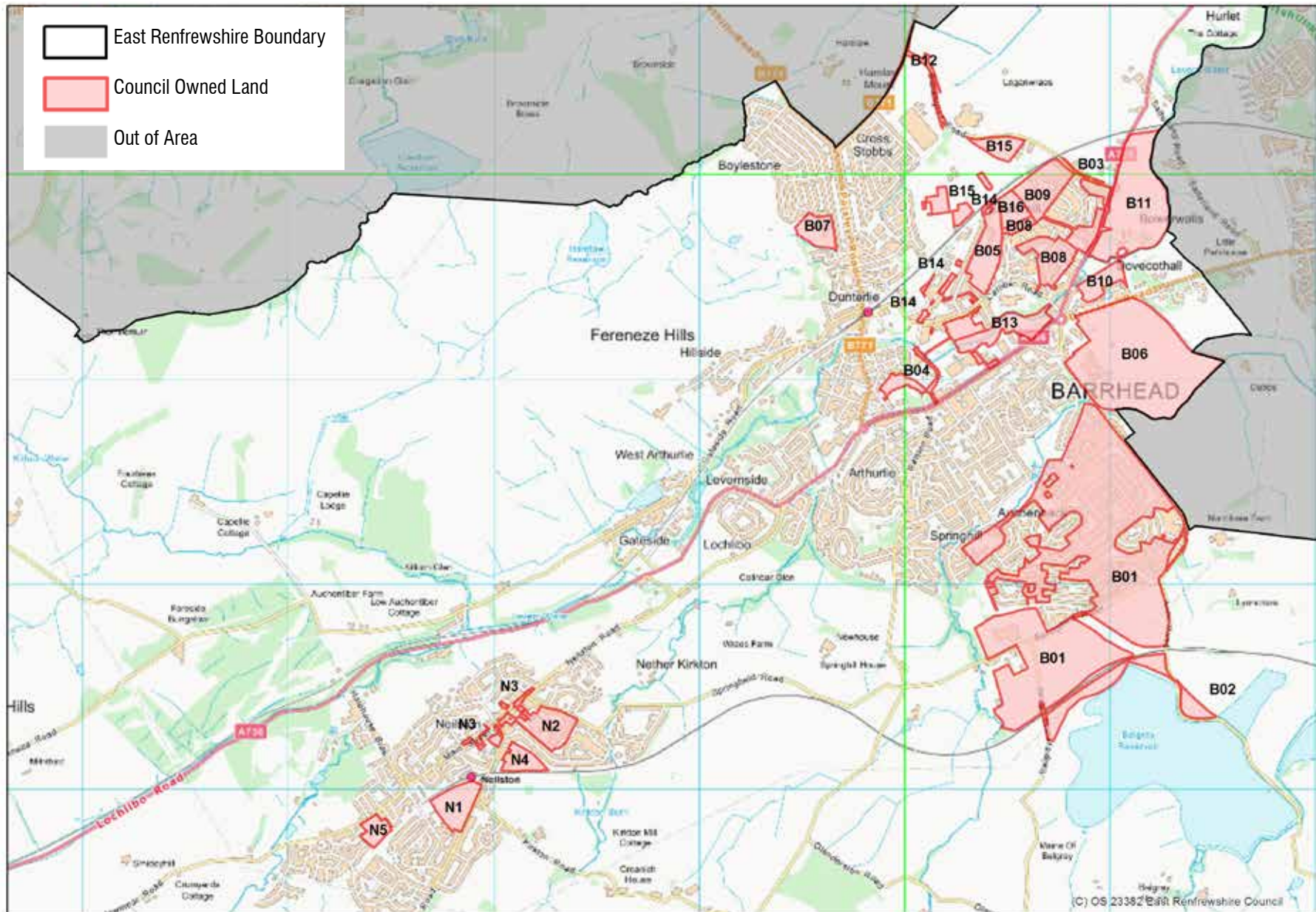
Schedule of Council Land Ownership

Section 15(3) of the Town and Country Planning (Scotland) Act 1997 as amended by the Planning etc. (Scotland) Act 2006 requires Local Development Plans to contain a schedule of land that is owned by the planning authority and affected by any of the policies or proposals expressed in the Proposed Plan.

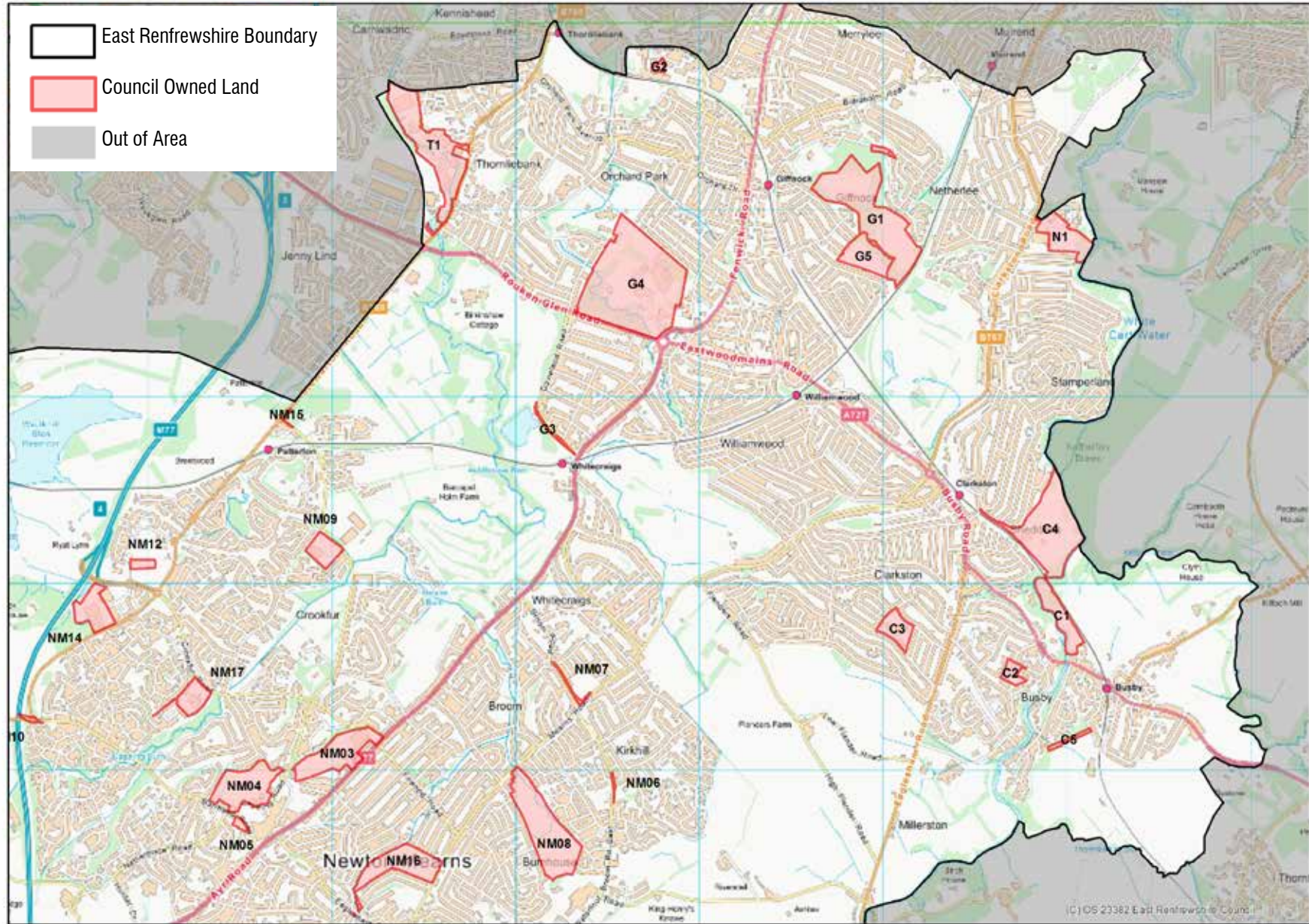
The boundaries shown on the plan define the extent of land currently owned by East Renfrewshire Council, using data from Estates on acquisition titles and sales, for Council land affected within the proposed Local Development Plan.



Map 1: Levern Valley



Map 2: Eastwood North



Map 3: Eastwood South



Description of Land Owned by East Renfrewshire Council	Reference to policies or proposals contained in the Proposed Local Development Plan 2 which relate to the occurrence of development of the land	
B01 - Auchenback Barrhead	Master Plans	M2 Policy M2: M77 Strategic Development Opportunity
	Master Plans	M2.2 M77 Corridor SDO - Barrhead South
	Schedule 1 - City Deal Proposals	Strat3.2 Levern Valley Link Road
	Schedule 1 - City Deal Proposals	Strat3.4 Dams to Darnley Country Park Balgray Reservoir
	Schedule 1 - City Deal Proposals	Strat3.6 Balgraystone Road, Barrhead
	Schedule 1 - City Deal Proposals	Strat 3.7 Barrhead South Train Station, Barrhead
	Schedule 3 - Green Networks and Proposals	D4.2 Barrhead South SDO, Barrhead
	Schedule 6 - Sustainable Transport Network and Active Travel	D8.5 Barrhead South SDO, Barrhead, Access Enhancements
	Schedule 7 - Environmental Projects	D9.1 Dams to Darnley Country Park
	Schedule 8 - Community Facilities	D12.1 Barrhead South SDO, Barrhead
	Schedule 8 - Community Facilities	D12.4 Dams to Darnley Country Park - Balgraystone Road
	Schedule 15 - Housing Sites	SG1.5 Lyoncross, Barrhead
	Schedule 15 - Housing Sites	SG1.7 Springfield Road, Balgraystone Road Barrhead
	Schedule 15 - Housing Sites	SG1.9 Springfield Road, Aurs Road Barrhead
Schedule 18 - Business Proposals	SG6.1 Barrhead South SDO, Barrhead	
Schedule 20 - Town and Neighbourhood Centre Proposals	D12.1 Barrhead South SDO, Barrhead	
B02 - Aurs Road Barrhead	Master Plans	M2 Policy M2: M77 Strategic Development Opportunity
	Schedule 1 - City Deal Proposals	Strat3.1 Aurs Road
	Schedule 1 - City Deal Proposals	Strat3.3 Dams to Darnley Country Park
	Schedule 7 - Environmental Projects	D9.1 Dams to Darnley Country Park
	Schedule 8 - Community Facilities	D12.3 Dams to Darnley Country Park, Barrhead
B03 - Blackbyres Road Barrhead	Master Plans	M3 Shanks/Glasgow Road Barrhead SDO
	Schedule 17 - Safeguarded business and employment areas	SG5.3 Glasgow Road West, Barrhead (Policy M4)
B04 – Carlibar Road Barrhead	Schedule 3 - Green Networks and Proposals	D4.4 Carlibar Park, Barrhead
	Schedule 15 - Housing Sites	SG1.4 Glen Street/Walton Street Barrhead
B05 - Commercial Road Barrhead	Schedule 3 - Green Networks and Proposals	D4.6 Dunterlie, Barrhead

Description of Land Owned by East Renfrewshire Council	Reference to policies or proposals contained in the Proposed Local Development Plan 2 which relate to the occurrence of development of the land	
B06 - Cowan Park Barrhead	Schedule 3 - Green Networks and Proposals	D4.5 Cowan Park, Barrhead
	Schedule 7 - Environmental Projects	D9.1 Dams to Darnley Country Park
B07 - Cross Arthurlie Primary Barrhead	Schedule 9 - Education Facilities	D12.12 Cross Arthurlie Primary School, Barrhead
B08 - Crossmill Barrhead	Schedule 3 - Green Networks and Proposals	D4.6 Dunterlie, Barrhead
B09 - Crossmill Waulkmill Avenue Barrhead	Master Plans	M3 Shanks/Glasgow Road Barrhead SDO
	Schedule 3 - Green Networks and Proposals	D4.6 Dunterlie, Barrhead
	Schedule 16 - Affordable and Housing for Particular Needs	SG4.1 Blackbyres Court, Barrhead
B10 - Darnley Road Barrhead	Master Plans	M3 Shanks/Glasgow Road Barrhead SDO
	Schedule 15 - Housing Sites	SG1.11 N Darnley Road, Barrhead
B11 - Glasgow Road (East), Barrhead	Master Plans	M3 Shanks/Glasgow Road Barrhead SDO
	Schedule 1 - City Deal Proposals	Strat3.5 Former Nestle factory, Barrhead
	Schedule 17 - Safeguarded business and employment areas	SG5.1 Crossmill Business Park, Barrhead
	Schedule 17 - Safeguarded business and employment areas	SG5.2 Glasgow Road East, Barrhead (Policy M4)
	Schedule 18 - Business Proposals	SG6.2 Former Nestle factory, Barrhead
	Schedule 20 - Town and Neighbourhood Centre Proposals	SG11.3 Former Nestle Factory, Barrhead
B12 - Grahamston Road Barrhead	Master Plans	M3 Shanks/Glasgow Road Barrhead SDO
	Schedule 6 - Sustainable Transport Network and Active Travel	D8.8 Blackbyres Road / Grahamston Road, Barrhead
	Schedule 15 - Housing Sites	SG1.10 Shanks Park, Barrhead
	Schedule 15 - Housing Sites	SG1.12 Grahamston Road / Blackbyres Road, Barrhead
	Schedule 15 - Housing Sites	SG1.13 501 Blackbyres Road, Barrhead
B13 - Levern Water Barrhead	Schedule 3 - Green Networks and Proposals	D4.4 Carlibar Park, Barrhead
B14 - Muriel Street Barrhead	Schedule 17 - Safeguarded business and employment areas	SG5.4 Muriel Street, Barrhead
B15 - Shanks Barrhead	Master Plans	M3 Shanks/Glasgow Road Barrhead SDO
	Schedule 15 - Housing Sites	SG1.10 Shanks Park, Barrhead
B16 - Stewart Street Barrhead	Schedule 3 - Green Networks and Proposals	D4.6 Dunterlie, Barrhead

Description of Land Owned by East Renfrewshire Council	Reference to policies or proposals contained in the Proposed Local Development Plan 2 which relate to the occurrence of development of the land	
C1 - Busby Glen Busby	Schedule 3 - Green Networks and Proposals	D4.10 White Cart Valley Greenspace
C2 - Busby Primary School	Schedule 9 - Education Facilities	D12.13 Busby Primary School, Busby
C3 - Carolside Primary Clarkston	Schedule 9 - Education Facilities	D12.14 Carolside Primary School, Clarkston
C4 - Overlee Park Clarkston	Schedule 3 - Green Networks and Proposals	D4.10 White Cart Valley Greenspace
	Schedule 6 - Sustainable Transport Network and Active Travel	D8.10 Busby Glen / Overlee Park, Clarkston
	Schedule 8 - Community Facilities	D12.9 Overlee Park, Netherlee
	Schedule 9 - Education Facilities	D12.18 Overlee Park, Netherlee
C5 - Westerton Drive Busby	Schedule 6 - Sustainable Transport Network and Active Travel	D8.9 Busby Railway Station to Williamwood High School
E1 - Eaglesham Primary Eaglesham	Schedule 9 - Education Facilities	D12.15 Eaglesham Primary School, Eaglesham
G1 - Braidbar Giffnock	Master Plans	M4 Braidbar Quarry
	Schedule 8 - Community Facilities	D12.6 Huntly Park, Giffnock
G2 - Burnfield Avenue Giffnock	Schedule 17 - Safeguarded business and employment areas	SG5.6 Burnfield Road, Giffnock
G3 - Davieland Road Giffnock	Schedule 6 - Sustainable Transport Network and Active Travel	D8.12 Davieland Road, Giffnock
G4 - Eastwood Park	Schedule 8 - Community Facilities	D12.5 Eastwood Park, Giffnock
	Schedule 9 - Education Facilities	D12.16 St Ninians High School, Giffnock
	Schedule 9 - Education Facilities	D12.22 Glenwood Family Centre, Thornliebank
	Schedule 8 - Community Facilities	D12.6 Huntly Park, Giffnock
N1 - Linnpark Avenue Netherlee	Schedule 3 - Green Networks and Proposals	D4.9 Netherlee Master Plan
	Schedule 8 - Community Facilities	D12.8 Kingston Playing Field, Neilston
	Schedule 13 - Proposed Conservation Areas	D19.1 Proposed Netherlee Conservation Area
N2 - Kirktonfield Road Neilston	Schedule 8 - Community Facilities	D12.7 Neilston Village Centre
N3 - Main Street Neilston	Schedule 8 - Community Facilities	D12.7 Neilston Village Centre
N4 - Neilston Primary School	Schedule 9 - Education Facilities	D12.17 Neilston Primary School, Neilston
N5 - Uplawmoor Road Neilston	Schedule 6 - Sustainable Transport Network and Active Travel	D8.14 Double Hedges Road and Glen Shee Avenue, Neilston
	Schedule 15 - Housing Sites	SG1.17 Neilston Juniors, Neilston

Description of Land Owned by East Renfrewshire Council	Reference to policies or proposals contained in the Proposed Local Development Plan 2 which relate to the occurrence of development of the land	
NM01 - A77 Newton Mearns	Master Plans	M2 Policy M2: M77 Strategic Development Opportunity
NM02 - Aurs Road Newton Mearns	Master Plans	M2 Policy M2: M77 Strategic Development Opportunity
	Schedule 1 - City Deal Proposals	Strat3.1 Aurs Road
	Schedule 7 - Environmental Projects	D9.1 Dams to Darnley Country Park
NM03 - Ayr Road Newton Mearns	Schedule 3 - Green Networks and Proposals	D4.12 Newton Mearns Greenspace
	Schedule 8 - Community Facilities	D12.10 Crookfur Pavilion, Newton Mearns
	Schedule 9 - Education Facilities	D12.19 Crookfur Pavilion, Newton Mearns
NM04 - Barrhead Road Newton Mearns	Schedule 3 - Green Networks and Proposals	D4.12 Newton Mearns Greenspace
NM05 - Barrhead Road Newton Mearns	Schedule 16 - Affordable and Housing for Particular Needs	SG4.5 Barrhead Road Newton Mearns
NM06 - Broom Road East Newton Mearns	Schedule 17 - Safeguarded business and employment areas	SG5.9 Kirkhill House, Newton Mearns
NM07 - Broom Road Newton Mearns	Schedule 15 - Housing Sites	SG1.21 Little Broom, Newton Mearns
NM08 - Broomburn Drive Newton Mearns	Schedule 3 - Green Networks and Proposals	D4.12 Newton Mearns Greenspace
NM09 - Crookfur Primary Newton Mearns	Schedule 9 - Education Facilities	D12.20 Crookfur Primary School, Newton Mearns
NM10 - Dodside Road Newton Mearns	Master Plans	M2 Policy M2: M77 Strategic Development Opportunity
	Schedule 7 - Environmental Projects	D9.1 Dams to Darnley Country Park
NM11 - Greenhags Newton Mearns	Schedule 22 - Waste Management Facilities	E11.2 Greenhags
NM12 - Greenlaw Newton Mearns	Schedule 17 - Safeguarded business and employment areas	SG5.8 Greenlaw Business Park, Newton Mearns
NM13 - GSO Newton Mearns	Master Plans	M2 Policy M2: M77 Strategic Development Opportunity
	Master Plans	M2.1 M77 Corridor SDO - Maidenhill Newton Mearns
	Schedule 3 - Green Networks and Proposals	D4.11 Maidenhill / Malletsheugh, Newton Mearns SDO, Newton Mearns
	Schedule 8 - Community Facilities	D12.11 Maidenhill / Malletsheugh, Newton Mearns SDO, Newton Mearns
NM14 - Isobel Mair School Newton Mearns	Master Plans	M2 Policy M2: M77 Strategic Development Opportunity
	Schedule 7 - Environmental Projects	D9.1 Dams to Darnley Country Park

Description of Land Owned by East Renfrewshire Council	Reference to policies or proposals contained in the Proposed Local Development Plan 2 which relate to the occurrence of development of the land	
NM15 - Patterton Newton Mearns	Master Plans	M2 Policy M2: M77 Strategic Development Opportunity
NM16 - Shawhill Crescent Newton Mearns	Schedule 3 - Green Networks and Proposals	D4.12 Newton Mearns Greenspace
NM17 - St Cadoc's Primary Newton Mearns	Schedule 9 - Education Facilities	D12.21 St Cadoc's Primary School, Newton Mearns
T1 - Spiersbridge Thornliebank	Schedule 17 - Safeguarded business and employment areas	SG5.11 Spiersbridge Business Park, Thornliebank
	Schedule 18 - Business Proposals	SG6.7 Spiersbridge Business Park, Thornliebank





EAST RENFREWSHIRE COUNCIL
Strategic Services
2 Spiersbridge Way
Spiersbridge Business Park
Thornliebank
G46 8NG