

EAST RENFREWSHIRE COUNCILWednesday 9 May 2018Report by Deputy Chief ExecutiveEast Renfrewshire Community Plan, including Fairer East Ren**PURPOSE OF REPORT**

1. The purpose of this report is to seek approval for the Community Planning Partnerships' (CPP) Community Plan, including Fairer East Ren, which sets out our vision and aspirations for East Renfrewshire.

RECOMMENDATION

2. It is recommended that Council:

- Comment on the strategic focus and direction of the Community Plan in Annex 1; and
- Approve the draft Community Plan and delegate responsibility to the Councillors on the CPP Board to approve any final refinements ahead of formal CPP Board approval in June.

BACKGROUND

3. Work began in September 2016 to implement the requirements of the Community Empowerment Act, including the development of a Local Outcomes Improvement Plan (known locally as Fairer East Ren) which was to be the replacement for the Single Outcome Agreement but with a tighter focus on addressing inequality.

4. To assist with this task, representatives of the Community Planning Partnership formed the Locality Planning Working Group (LPWG) and reviewed socio-economic data to identify key challenges facing East Renfrewshire. The LPWG agreed to build the Fairer East Ren engagement on the community priorities that have already been identified through existing consultation data such as East Renfrewshire Council's Citizen's Panel and Voluntary Action's Fairer Scotland conversations. From January to May 2017 the views of over 2,200 residents were gathered and analysed to inform the creation of Fairer East Ren. This included targeted engagement with key community groups and holding pop-up events at the Avenue, the Foundry and Eastwood Health and Care Centre aimed at engaging residents as they carry out their day-to-day activities.

5. This extensive engagement resulted in four key areas of focus:

- Reducing the impact of Child Poverty
- Improved employability
- Improving mental health and wellbeing
- Reducing social isolation, loneliness and increasing safety

The plan also contained two cross cutting themes of Moving Around and Community Influence and Sense of Control.

6. In the report to Council approving Fairer East Ren in September 2017, it was agreed that, over the first year of the plan, the CPP would focus on the development of delivery plans for each of the Fairer East Ren outcomes, performance measures and the corresponding governance and monitoring arrangements.

7. In March 2017 the CPP Board agreed that we should develop an overarching Community Plan based on the five previous Single Outcome Agreement (SOA) outcomes originally identified through engagement with communities. The Community Plan was envisioned to set out our high-level aspirations for all our communities and groups in East Renfrewshire and provide a strategic framework for all CPP plans and strategies, including Fairer East Ren.

DEVELOPMENTS TO DATE

8. Since October there has been intensive engagement with partners to refine outcomes and ensure there is a clear strategic focus across the Partnership. In December a cross-CPP outcome planning workshop was held, senior officers and representative from key Community Planning Partners attended and developed the wording of a set of outcomes and intermediate outcomes for the Community Plan, Fairer East Ren and the Council's Outcome Delivery Plan.

9. At the Information and Consultation Session in March 2018, elected members were provided with an opportunity to input into the development of the Community Plan.

10. These discussions have sharpened the focus of the Community Plan and Fairer East Ren and tightened up the outcomes. The detail of this is in the following sections.

11. It is important for elected members to note that the Community Plan will remain a draft document until final approval by the Community Planning Partnership Board in June and therefore further refinements can be made at this stage. This will be a long term strategic framework and vision for the CPP and it is important that it reflects the views of partners, communities and elected members.

COMMUNITY PLAN

12. The Community Plan sets out the CPP's vision for all of East Renfrewshire's communities, incorporating a sharp focus on tackling inequality through the Fairer East Ren part of the plan. The purpose of the Community Plan is to provide the strategic outcomes framework for the whole of the Community Planning Partnership in a single document. Outcomes and intermediate outcomes have been developed with extensive partner consultation. The Community Plan sets out our ten year, high-level ambition for the whole of East Renfrewshire whilst maintaining our clear 'golden thread' approach to performance management.

13. The Community Plan follows the 'life stages' structure of our previous Single Outcome Agreement, these are well embedded across the partnership and reflect the priorities of our communities. Our strategic priority areas set out our vision for residents across:

- Early Years and Vulnerable Young People
- Learning, Life and Work
- Economy and Environment
- Safer, Supportive Communities
- Older People and People with Long Term Conditions.

14. Under each of the strategic priority areas, the Community Plan summarises key messages from our socio-economic data and sets out our outcomes and intermediate outcomes.

15. Each of our strategic priority areas has high level measures to track long term changes across East Renfrewshire. These tracking measures do not have targets, as it not possible to attribute the benefits of specific partnership actions to the changes. The cumulative efforts of all the partners are aimed at moving the measures in a positive direction in the long term. Changes in these indicators will be monitored by the Community Planning Partnership Board annually.

16. The Communications Team are currently working on a design concept that will ensure the final version of the Community Plan is a clear and easy to read document with a consistent format and infographics.

FAIRER EAST REN

17. The Community Plan also incorporates Fairer East Ren, which was initially approved in September 2017. Fairer East Ren is focused on tackling the inequalities between communities and groups across East Renfrewshire.

18. In light of the development of the Community Plan, partners agreed a number of small changes to the Fairer East Ren plan to ensure consistency with the wider strategic planning framework. Each of the Fairer East Ren intermediate outcomes are now aligned with the Community Plan. It was agreed that the Fairer East Ren intermediate outcome focusing on 'Moving Around' would be moved from a cross-cutting theme. Therefore there are now five key areas of focus:

- Reducing the impact of Child Poverty
- Improved employability
- Moving around
- Improving mental health and wellbeing
- Reducing social isolation, loneliness and increasing safety

19. The guidance for the Community Empowerment Act requires CPPs to set out what steps they will take, and how they will align their shared resources, to achieve their Local Outcomes Improvement Plan in a publicly available document. To deliver Fairer East Ren, a number of cross-partnership groups are in the process of developing delivery plans for each of our Fairer East Ren outcomes which will be agreed by partners and published over the coming months.

CONSULTATION AND ENGAGEMENT

20. Fairer East Ren was developed through extensive consultation and engagement with our communities. Outcomes, contributions and targets were directly informed by the understanding of local priorities established during this consultation.

21. The Community Plan has been developed in detailed consultation with our Community Planning Partners.

FINANCE AND EFFICIENCY

22. Under the Community Empowerment (Scotland) Act 2015 CPPs must align resources to meet local priorities efficiently and effectively. Deployment of resources across the partnership will be kept under review throughout the delivery of our Community Plan.

IMPLICATIONS OF THE PROPOSALS

23. Strategic plans are subject to equality impact assessment and the Community Plan will be assessed jointly with the Council's Outcome Delivery Plan (ODP). A full joint Equality Impact Assessment (EIA) with the previous Single Outcome Agreement and ODP was last completed in February 2017 to ascertain and address any potential equality issues. No significant equality impacts were identified. An EIA has been carried out previously for Fairer East Ren. This will be refreshed and taken in to account as part of a wider EIA of both the Community Plan and ODP.

RECOMMENDATIONS

24. It is recommended that Council:

- Comment on the strategic focus and direction of the Community Plan in Annex 1; and
- Approve the draft Community Plan and delegate responsibility to the Councillors on the CPP Board to approve any final refinements ahead of formal CPP Board approval in June.

REPORT AUTHOR

- Caroline Innes, Deputy Chief Executive
- Report Authors: Tracy Butler, Partnerships Team Leader and Matthew Sweeney, Partnership Support Officer
- Report Date: 9 May 2018

BACKGROUND PAPERS & RELEVANT LINKS:

- Council Paper 'Fairer East Ren and Locality Plans' 28 September 2017
<http://www.eastrenfrewshire.gov.uk/CHttpHandler.ashx?id=21000&p=0>
- Cabinet paper on the "Development of The Local Outcome Improvement Plan And Locality Plans" 26 January 2017
<http://www.eastrenfrewshire.gov.uk/CHttpHandler.ashx?id=19220&p=0>
- Council paper on the consultation response to the Act:
<http://www.eastrenfrewshire.gov.uk/CHttpHandler.ashx?id=17017&p=0>
- Link to the Community Empowerment (Scotland) Act 2015:
<http://www.legislation.gov.uk/asp/2015/6/contents>
- Guidance for Part 2: Community Planning Guidance:
<http://www.gov.scot/Publications/2016/12/8801>

KEY WORDS – Community Plan, Fairer East Ren, inequalities, partnership working

East Renfrewshire Community Planning Partnership

Draft Community Plan (including Fairer East Ren)

Final design work to be completed after
approval

BLANK PAGE

Introduction from Chair of Community Planning Partnership

We are delighted to present East Renfrewshire Community Planning Partnership's Community Plan. This plan sets out how local services will work together to improve the lives of the people of East Renfrewshire and promote equality and fairness.

Our Community Plan reflects the most important priorities of our residents. It is the core strategic document for the East Renfrewshire Community Planning Partnership (CPP) as we work to deliver excellent services that focus on the delivery of outcomes. The Community Plan is a key demonstration of our commitment to the people of East Renfrewshire and the outcomes we plan to achieve.

This plan includes Fairer East Ren. This part of the plan has a clear focus on tackling inequalities across East Renfrewshire. Working with our communities we have identified clear priorities for making East Renfrewshire a fairer place. In addition our Locality Plans at community level have been developed in partnership with local communities to agree local priorities and work together to find solutions. Our conversations with communities will continue as we develop and deliver our plans.

This overarching Community Plan encompasses the work of all statutory community planning partners, other key public sector agencies and the voluntary and business sectors in East Renfrewshire. It sets out the priorities and context for partnership working in East Renfrewshire to ensure all of the plans and strategies of the CPP are working towards the same aims.

Through these plans all local public sector partners are committed to making East Renfrewshire the best place to live and work.

Tony Buchanan

**Leader of East Renfrewshire Council
Chair of East Renfrewshire
Community Planning Partnership**

BLANK PAGE

Contents

Item	Pg.
Our vision for East Renfrewshire	4
Community Plan	
About East Renfrewshire Community Planning Partnership	5
About this document	6
Key Population Facts	7
Our Community Plan Outcomes	8
1. Childhood	9
2. Learning, Life and Work	10
3. Economy and Environment	11
4. Safer, Supportive Communities	12
5. Older People and People with Long Term conditions	13
Fairer East Ren	
Introduction	14
Key socio-economic facts	15
Community involvement and influence	18
Our Fairer East Ren Outcomes	19
1. Reducing the impact of Child Poverty	20
2. Improved Employability	21
3. Moving Around	22
4. Improved Mental Health and Wellbeing	23
5. Reducing social isolation, loneliness and increasing safety	24
How we will deliver our plans	25
Annex 1- Driver Diagrams at 1 October 2017	27
Annex 2- Links with National Outcomes	32

BLANK PAGE

Vision

Our vision for East Renfrewshire is....

An attractive and thriving place to grow up, work, visit, raise a family and enjoy later life.

About East Renfrewshire Community Planning Partnership

East Renfrewshire Community Planning Partnership (CPP) works for and with communities to ensure everyone has the best possible quality of life. East Renfrewshire CPP is comprised of a range of organisations. Five key organisations have a specific legal duty to lead community planning:

- East Renfrewshire Council
- NHS Greater Glasgow and Clyde
- Police Scotland
- Scottish Fire and Rescue Service
- Scottish Enterprise

The following additional key partners are actively involved in the Community Planning Partnership and contribute to the delivery of our outcomes:

- East Renfrewshire Integration Joint Board (Health and Social Care Partnership)
- Strathclyde Partnership for Transport
- Skills Development Scotland
- Voluntary Action East Renfrewshire SCIO
- Department for Work and Pensions
- West College Scotland
- East Renfrewshire Culture and Leisure Trust

There are also a range of partnership working arrangements in place with the community, business and voluntary sectors across East Renfrewshire.

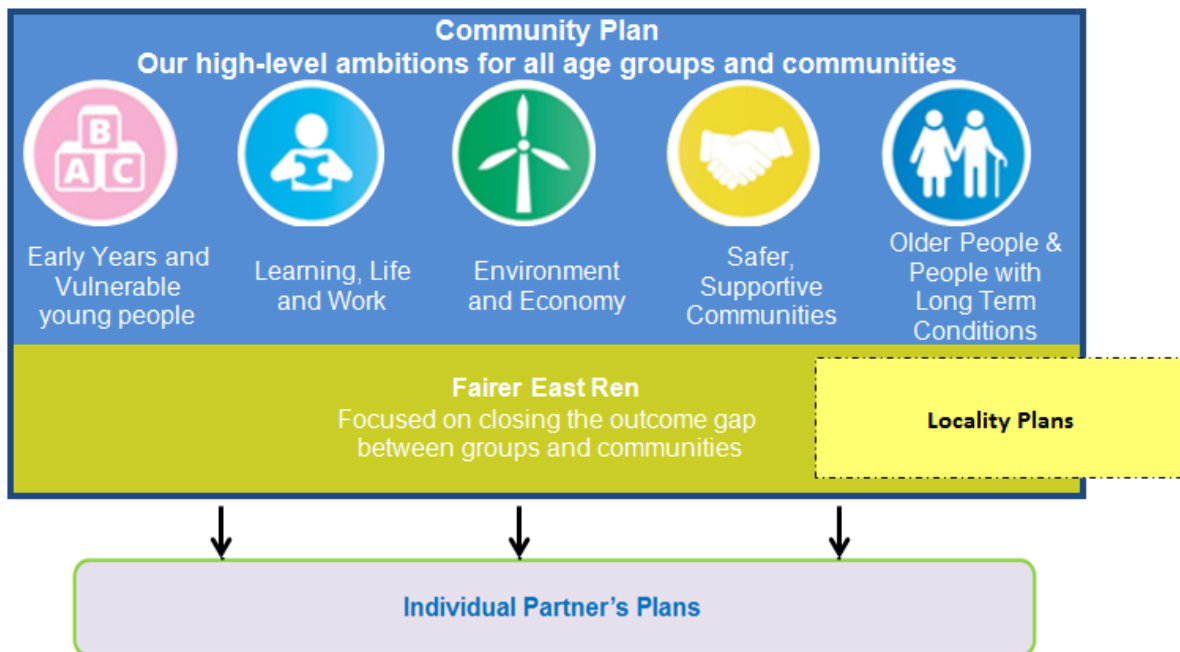
The Community Planning Partnership works together in lots of different ways to improve quality of life across East Renfrewshire.

About this document

East Renfrewshire CPP has a set of plans and strategies in place that together will deliver the wide range of outcomes that are important to our communities:

This is our overarching document for the CPP which includes:

- **Community Plan** – setting out the high-level ambitions for all age groups and communities in East Renfrewshire for the next ten years. The plan will be delivered by the collective effort of all the partner organisations and communities, whether acting in partnership to tackle a specific issue or acting alone as they have specific expertise.
- **Fairer East Ren** – is our Local Outcomes Improvement Plan as required under the Community Empowerment Act. It focuses on reducing inequality across groups and communities in East Renfrewshire. The plan will have ten year outcomes, with one and three year targets, where we can make the biggest difference to people’s lives. Each outcome area will have a detailed strategy.
- **Locality Plans** –Our locality plans will focus where we need to work with specific, priority geographical communities to support them to thrive and be more resilient. Locality Plans will have ten year outcomes, and one and three year targets. Our first Locality Plans, for Auchenback and ADD2Barrhead (Arthurlie, Dunterlie and Dovecothall) were approved in September 2017. We are in the early stages of developing a plan for Neilston.



Our Population

The population structure of an area determines the services required such as education, leisure, health and social care.

East Renfrewshire has a higher rate of children and young people, a lower rate of working age residents and a higher rate of elderly residents compared to Scotland.



20.0% aged
0-15



60.2% aged
16-64



19.7% aged
65 and over

The number of our children, young people and elderly residents will rise significantly over the next 25 years.



Largest average household size in Scotland – 2.42 people

This will reduce due to rising older population and single person households

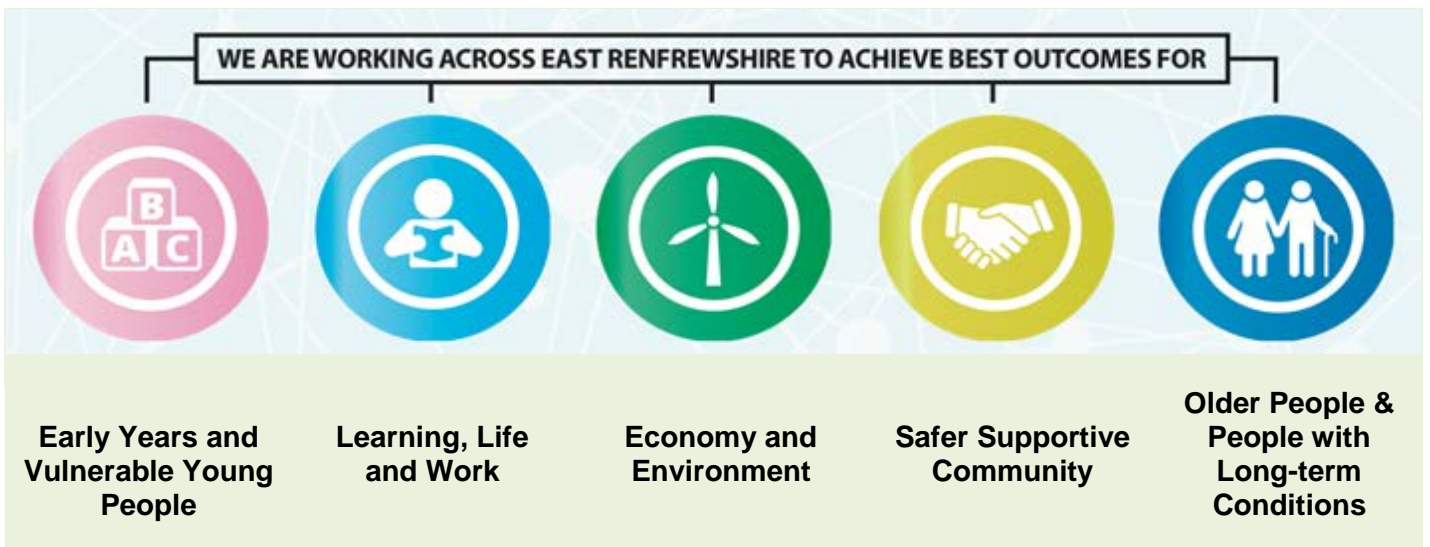
Our Community Plan Outcomes

Our Community Plan is structured around five strategic priority areas following the key life stages of our residents: children and young people, families, adults and older people.

These priority areas were originally identified in 2012 through detailed socio-economic analysis and extensive community engagement, are well embedded in the work of the CPP and continue to reflect the needs and priorities of our residents.

In 2018 the Community Plan continues to be based on these five strategic priority areas and now has a sharpened focus on inequalities. Our community engagement to inform this plan has focused on identifying the biggest inequalities faced by our residents, groups and communities. As a result our Community Plan outcomes framework now has a specific Fairer East Ren layer of outcomes focused on tackling inequality.

Strategic priority areas



The next section (pages 9-13) outlines, for each of the five strategic priority areas:

- Our Outcome, Fairer East Ren Outcome and Intermediate Outcomes
- Key messages from relevant socio-economic data
- The outcome data that will be tracked to ensure the CPP continues to achieve its vision for East Renfrewshire.

Progress towards achieving our vision for East Renfrewshire, will be considered by the Community Planning Partnership Board annually.

1

Early Years and Vulnerable Young People

We know East Renfrewshire is one of the best places in Scotland to grow up with high life expectancy rates at birth. **However** we have a growing demand on our services with an increasing population of children under five and almost one in ten children and young people across East Renfrewshire live in poverty.



Females born today in East Renfrewshire can enjoy the best life expectancy rates in Scotland – 83.5 years. Males have the 2nd highest life expectancy at birth – 80.1 years



20% of ERC population aged 0-15



Projected that there will be 3,300 more children and young people living in East Renfrewshire within the next 25 years than today.



89.8% of our Primary 1 children have a healthy Body Mass Index (BMI). Higher than Scottish average of 85.3%.

The outcome we want is....

All children in East Renfrewshire experience a stable and secure childhood and succeed.

Our Intermediate Outcomes

1.1- The impact of child poverty is reduced (Fairer East Ren)

1.2- Parents provide a safe, healthy and nurturing environment for their families.

1.3- Children and young people are cared for, protected and their wellbeing is safeguarded

Key measures:

↓ Children and Young People Dependency Ratio (Ratio of 0-15's to the working age population (age 16-64))

↑ Male Life Expectancy at Birth

↑ % of babies with a healthy birthweight

↑ Female Life Expectancy at Birth

2

Learning, life & work

East Renfrewshire has some of the best schools in Scotland with high rates of attainment as well as a high proportion of young people going into positive destinations following school. **However** we still have a gap between the attainment of those from the poorest areas and those from the least deprived areas. Digital skills are becoming important for all in employment and we still have school leavers, and other age groups, who struggle to gain and then maintain employment. Whilst our residents are generally healthier than in many parts of Scotland, we must continue to encourage residents to be physically active to enhance their quality of life.



42.5% of ERC school pupils report that their usual method of travel to school is by walking or cycling.



More than $\frac{3}{4}$ of S4 pupils achieved 5 or more national examination results at level 5.



96.1% of school leavers entered positive destinations.



77.4% of East Renfrewshire's working age population are in employment.

The outcome we want is....

East Renfrewshire residents are healthy and active and have the skills for learning, life and work.

Our Intermediate Outcomes

2.1 - Residents have the right skills, learning opportunities and confidence to secure and sustain work (Fairer East Ren)

2.2- Children and young people are included.

2.3- Children and young people raise their educational attainment and achievement and develop the skills they need.

2.4- Residents are as healthy and active as possible

Measures

- ↑ % of school leavers in positive destinations
- ↑ % of East Renfrewshire's population who are economically active
- ↑ % of adult population with qualifications at NVQ level 4 (HND/Degree) and above

3

Economy & Environment

Our residents very much enjoy East Renfrewshire as a place to live and are generally very satisfied with local services. **However** East Renfrewshire is below the national average of new businesses surviving for their first three years and whilst our CO2 emissions compare favourably to Scotland, we must continue to make contributions to national reductions.



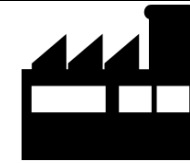
93% of residents are satisfied with East Renfrewshire as a place to live.



375 new enterprises were set up in East Renfrewshire in 2015. 92% of which were still operating after one year. A higher rate than the 90% national average.



91.6% of vacant land which has been allocated as employment land is immediately available for business expansion or relocation purposes.



East Renfrewshire emitted 4.6 tonnes of Carbon Dioxide (CO₂) per person in 2015/16. This is below the overall Scottish rate of 6.1 tonnes per resident.

The outcome we want is....

East Renfrewshire is a thriving, attractive and sustainable place for residents and businesses

Our Intermediate Outcomes

3.1 East Renfrewshire's transport links are accessible, attractive and seamless (Fairer East Ren)

3.2- East Renfrewshire is a thriving place to invest and for businesses to grow

3.3- East Renfrewshire is an attractive place to live with a good physical environment

3.4- East Renfrewshire is a great place to visit

3.5- East Renfrewshire is environmentally sustainable

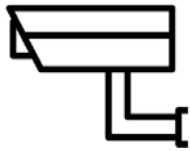
Measure

- ↑ Working age population - % of population aged 16-64
- ↑ Citizens Panel – Overall, how satisfied are you with East Renfrewshire as a place to live?
- ↑ Gross Value Added per head (all sectors)
- ↑ Median earnings for residents living in the East Renfrewshire area who are employed

4

Safer, Supported Communities

Our local communities are very active, vibrant and safe. East Renfrewshire has the lowest crime rates in mainland Scotland. **However** a majority of our residents feel they cannot influence important local decisions, anti-social behaviour is amongst residents' top policing priorities and we have a small proportion of our population who misuse alcohol and drugs.



There were 822 complaints regarding disorder during the first quarter of 2017/18 – a 29.2% increase on the previous year.



There were 167 dwelling fires per 100,000 dwellings across East Renfrewshire in the year 2016/17. This is below the Scottish average of 215 per 100,000.



East Renfrewshire experiences lower rates of drug related deaths than the NHS Greater Glasgow and Clyde area average.



More than half (60%) of East Renfrewshire's residents live in the 'least deprived' communities across Scotland according to the Scottish Index of Multiple Deprivation.

The outcome we want is....

East Renfrewshire residents are safe and live in supportive communities

Our Intermediate Outcomes

- 4.1- *Residents' mental health and wellbeing is improved (Fairer East Ren)*
- 5.1 *Residents are safe and are more socially connected within their communities (Fairer East Ren)*
- 4.2- Residents live in safe communities with low levels of crime and anti-social behaviour
- 4.3- Residents are protected from harm and abuse and public protection is safeguarded.
- 4.4- Residents live in communities that are strong, self-sufficient and resilient
- 4.5- Residents are protected from drug and alcohol related harm

Measure

- ↓ Number of crimes per 10,000 population
- ↓ Number of dwelling fires per 100,000 population
- ↓ % of residents who feel crime in ERC has increased over the last 2 years
- ↑ % of residents who have people they can rely on in their local area

5

Older People

East Renfrewshire's residents live long, healthy lives. Local people have a longer life expectancy than the Scottish average and are supported to maintain a good quality of life. **However** over the next 25 years, East Renfrewshire's older population is projected to rise significantly. Therefore, there will be a drive to ensure older people and those who have long term conditions benefit from improved quality of life, live at home for longer and are connected with their communities. At the same time there will be a need to support a growing number of carers.



19.7% of East Renfrewshire's residents are aged 65 and over. The number of residents aged 85+ is projected to grow by 134% over the next 25 years.



Of the residents who died in 2016/17, 85% of their last six months of life were spent either at home or in a community setting.



Almost 2,600 people provide 35 hours or more of unpaid care per week



Around 7,000 people are affected with a disability or long-term health condition which limits their day to day activities a lot.

The outcome we want is..

Older people and people with long term conditions in East Renfrewshire are valued; their voices are heard and they enjoy full and positive lives

Our Intermediate Outcomes

- 5.1 Residents are safe and are more socially connected within their communities (Fairer East Ren)
- 5.2- Older people and people with long term conditions stay as healthy as possible
- 5.3- Older people and people with long term conditions live safely and independently in the community
- 5.4- Carers are valued and can maintain their own health and wellbeing

Measures

- ↓ Old Age Dependency Ratio (Ratio of people aged 65+ to the working age population (age 16-64))
- ↑ Female life expectancy at age 75 years
- ↑ Male life expectancy at age 75 years

Fairer East Ren

This part of the plan sets out the CPP's approach to tackling inequalities and forms the statutory Local Outcomes Improvement Plan as required by the Community Empowerment Act

Our Fairer East Ren approach is based on a robust understanding of our local socio-economic data and evidence. We have worked to develop Fairer East Ren in partnership with our communities, gathering the views of over 2,200 local residents to inform our plan.

Taken together, the data evidence and community priorities identified Fairer East Ren's key areas of focus, each of which directly links to a Community Plan outcome. The key areas of focus are issues that can have a greater effect on vulnerable people, and have a significant impact on their quality of life, regardless of which geographical communities in East Renfrewshire that they live in.

Pages 16-19 set out in detail what we have learned from our data and engaging our communities. Further socio-economic data and details of the results of the engagement with communities can be found in our [technical analysis](#).

Child Poverty

Our child poverty rate is almost half the Scottish average, However around **1 in 10** children aged 0-19 are living in poverty. **That's 1,565 East Renfrewshire children and young people.**



Around 53% of these children are from the Levern Valley area whilst 47% are from the Eastwood side of the authority.

70% of children in Scotland living in poverty live in households with at least one adult in employment.



Barrhead also has higher rates of expectant mothers smoking during their pregnancy.



Barrhead and **Neilston** have lower rates of breastfeeding amongst new born children than across Scotland on average.

Transport and Moving Around



14% of people in East Renfrewshire do not have access to a car or van, this rate is higher in areas of deprivation

Income and Employment

While employment remains the best route out of poverty, it is not always a protection against poverty.



6,000 people working in East Renfrewshire earn less than the living wage.



6,600 people are income deprived with almost a 50/50 split between the Levern Valley and Eastwood areas.

Around 3,700 are unemployed or underemployed (not having enough paid work or not doing work that makes full use of their skills and abilities).

77.4% of the working age population (aged 16-64) are in employment.



53.6% of working age disabled people are in employment – that's a 23.8 percentage point gap between disabled and non-disabled residents



Around 200 young people (aged 16-24) claim Jobseekers Allowance each month.

Barrhead has a higher rate of working age benefit claimants and a higher rate of people age 60+ claiming Disability Living Allowance compared to the Scottish average.



Mental Health and Wellbeing

14,000 residents (15%) have been prescribed medication for anxiety and depression to some extent.



295 residents were admitted to hospital in 2015/16 due to a mental health related issue.



Around 30% of young people report that they experienced low mood half or most of the time in the last year.

Social Isolation and Loneliness

Almost 1 in 10 residents said they don't have people in their community that they can rely on or turn to for support.



Around half of single adults living alone in East Renfrewshire are aged 65+.

Over the next 25 years the number of older people living alone is projected to increase by 50%.

There are around 850 community groups in East Renfrewshire, whilst many of these are open to all; around 5% of these groups specifically cater for older people.

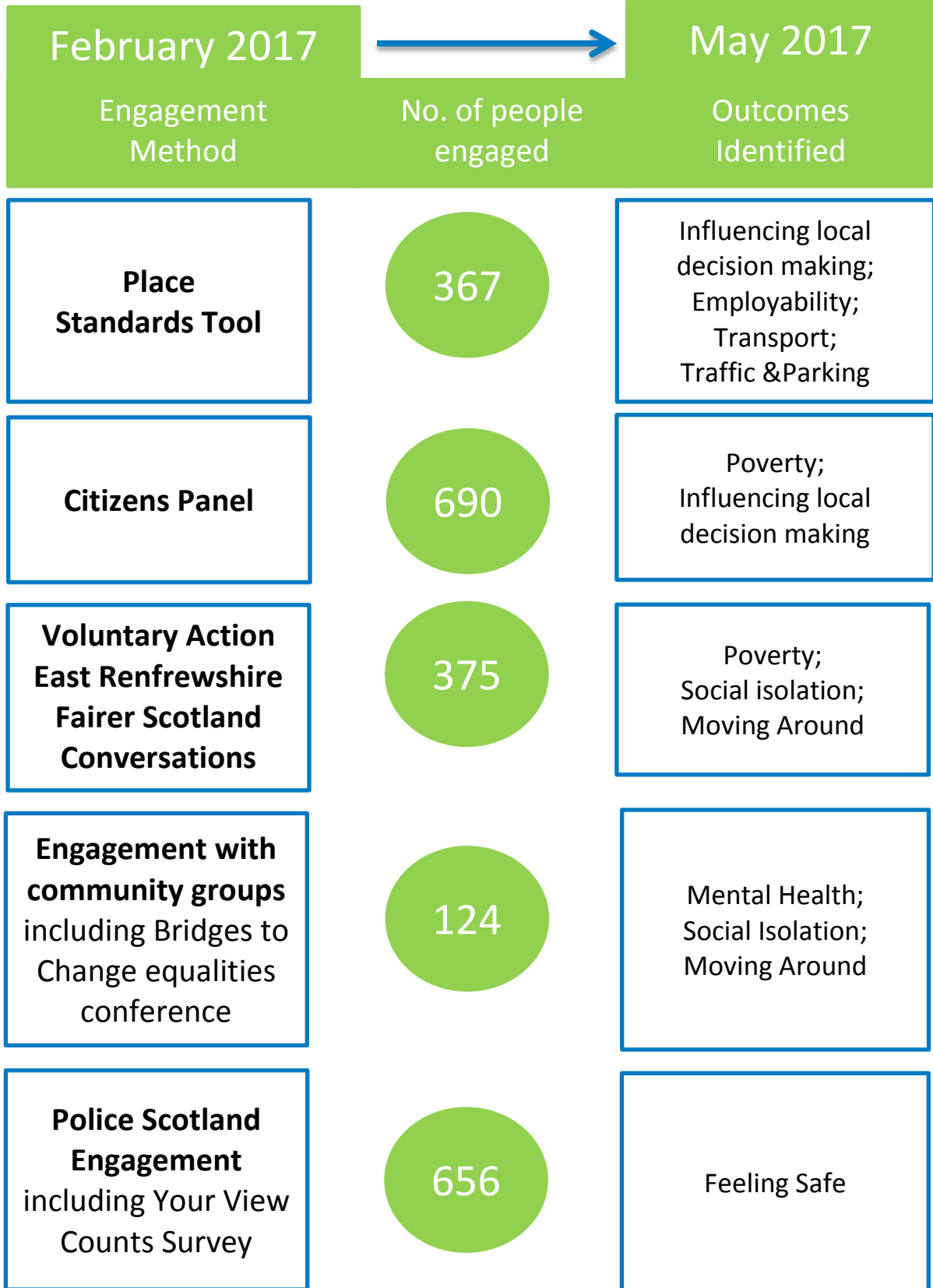


There are 1,800 people in East Renfrewshire living with dementia.



Community involvement and influence

East Renfrewshire’s CPP engaged with over 2,200 people between January and May 2017



Our Fairer East Ren outcomes

Fairer East Ren sets out the key areas of focus around tackling inequality for East Renfrewshire Community Planning Partnership. Each of our priorities is linked to the strategic outcomes in East Renfrewshire's Community Plan, as demonstrated in the table below:



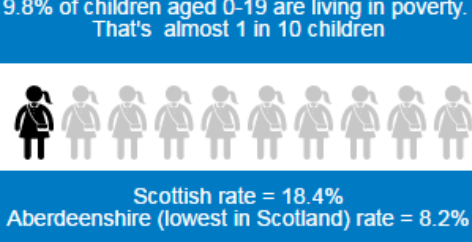
				
Early Years and Vulnerable Young People	Learning, Life and Work	Economy and Environment	Safer Supportive Community	Older People & People with Long-term Conditions
Reducing the impact of Child Poverty	Improved employability	Moving around	Improving mental health and wellbeing	Reducing social isolation, loneliness and increasing safety

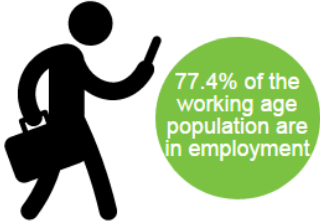
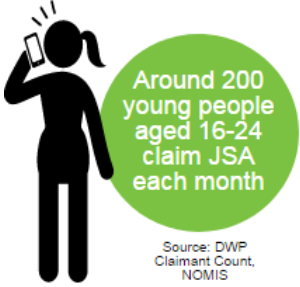

These will be addressed alongside our cross cutting priority theme: **Community influence and sense of control**¹.







This section outlines, for each of the key areas of focus:


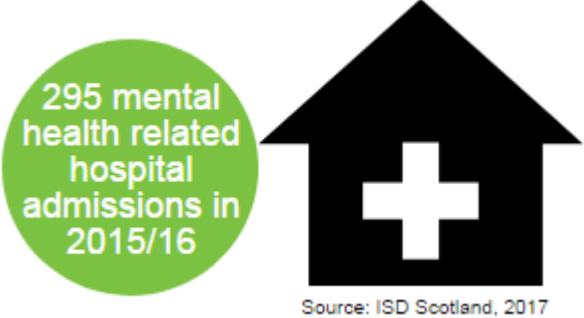
- the community views and evidence for each area
- the socio-economic evidence
- the Fairer East Ren outcome the CPP will work with communities to achieve
- key measures



¹ The links between our Fairer East Ren intermediate outcomes and the National Outcomes can be found under Annex 2

1	Community Plan Strategic Priority Area Early Years and Vulnerable Young People	Fairer East Ren Key Focus Reducing the impact of Child Poverty
<p>What our communities told us: Tackling child poverty will be at the core of Fairer East Ren’s focus to minimise inequalities of outcomes across East Renfrewshire. During our engagement we found residents had concerns about the use of foodbanks, the levels of child poverty across East Renfrewshire and the impact of welfare reform. Suggested solutions included affordable childcare, supporting individuals to switch tariffs to address fuel poverty and tackling poverty-related stigma. 86% of respondents to our online survey agreed that tackling poverty should be an outcome.</p> <p>Whilst East Renfrewshire Council has some of the lowest levels of child poverty in Scotland, we have seen an increase of 200 children (+12%) in poverty since 2012. 1,565 children and young people in East Renfrewshire living in poverty, roughly a quarter (500) of these children live in the 20% most deprived areas, meaning that whilst there is a geographical element to Child Poverty in East Renfrewshire, it exists across the authority. The impact of welfare reform has been a key driver and we will take a preventative approach in advance of change particularly to in-work families. Our work to tackle poverty is in line with the Scottish Government’s Fairer Scotland Action Plan and will take into account the new duties required under the Child Poverty Act. Actions to tackle this will focus on maximising incomes, reducing costs and improving the wellbeing of families facing poverty.</p>		
<p>The Fairer East Ren outcome we want is - The impact of child poverty across East Renfrewshire is reduced</p>		
<p>Key fact and figures</p>		
 <p>6,600 people income deprived Source: SIMD 2016</p> <p>Around 7% of East Renfrewshire’s population is classed as income deprived according to SIMD 2016.</p> <p>This is based on a range of data such as the number of people claiming Income Based Employment and Support Allowance; Jobseekers Allowance Claimants; Universal Credit claimants and Tax Credits data</p>	 <p>6,000 people working in East Renfrewshire earn less than the living wage Source: Annual Survey of Hours and Earnings, Scottish Government Analysis, 2016</p> <p>6,000 people or roughly 10% of East Renfrewshire’s working age population earn less than the Living Wage of £8.25 per hour. Although the Living Wage was set at £8.25 per hour at the time of this Scottish Government analysis, the Living Wage has since increased to £8.45 per hour, potentially pushing more people below the threshold</p>	 <p>9.8% of children aged 0-19 are living in poverty. That’s almost 1 in 10 children</p> <p>Scottish rate = 18.4% Aberdeenshire (lowest in Scotland) rate = 8.2%</p> <p>1,565 children and young people under the age of 20 live in low income families whereby the family is in receipt of Working Tax Credits, Child Tax Credits or Income-Based Jobseekers Allowance and their household income is also less than £228 per week before housing costs (60% of the median UK income).</p>
<p>We propose to measure and report on the following:</p> <ul style="list-style-type: none"> ↓ % of children in low income families (<i>proposed measure – to be confirmed</i>) ↓ Gap in achievement of expected levels in reading, writing and numeracy for early years (between best and worst SIMD quintiles) (<i>proposed measure – to be confirmed</i>) 		

2	Community Plan Strategic Priority Area Learning, Life and Work	Fairer East Ren Key Focus Improved Employability
<p>What our communities told us: During our engagement residents and communities highlighted they felt there were few opportunities for work locally, particularly in the Levern Valley. Communities highlighted possible solutions such as increasing support for those people from ethnic minority backgrounds, with a disability or with poor mental health.</p> <p>Through the Glasgow Region City Deal over £1.13 billion is being invested in East Renfrewshire, Glasgow & the Clyde Valley, which will deliver of a range of improved transport links and support for local business. However we recognise those furthest from the labour market may require additional support.</p> <p>Our approach to employability is based on the East Renfrewshire Employability strategy, and is linked closely with our priority outcomes of tackling poverty and supporting positive mental health and wellbeing.</p>		
<p>The Fairer East Ren outcome we want is - All residents of East Renfrewshire have the right skills and confidence to secure high quality work and progress in their careers</p>		
<p>Key facts and figures</p>		
 <p>Source: Annual Population Survey, 2016</p>	 <p>Source: DWP Claimant Count, NOMIS</p>	 <p>Source: Annual Population Survey, 2016</p>
<p>According to the SIMD 2016, around 3,700 people (6% of the working age population) in East Renfrewshire are employment deprived. This is based on long term unemployment claimant count numbers, Employment Support Allowance claimants and Working Age Severe Disablement Allowance recipients.</p>	<p>96.1% of East Renfrewshire’s school leavers were in positive destinations in 2016/17 – a higher rate than the Scottish average. However, around 2% of East Renfrewshire’s young people (16-24 year olds) claim Jobseekers Allowance each month, although this has reduced from 4% in 2011.</p>	<p>There is a 23.8 percentage point gap between working age disabled and non-disabled residents living in East Renfrewshire who are in employment. There are a range of barriers that may prevent people from entering employment such as physical disabilities, additional support needs and mental health issues</p>
<p>We propose to measure and report on the following:</p> <ul style="list-style-type: none"> ↑ S4: average insight points of pupils with free school meal entitlement (<i>proposed measure – to be confirmed</i>) ↓ % of workless households (<i>proposed measure – to be confirmed</i>) ↑ % of East Renfrewshire’s working age population in employment (<i>proposed measure – to be confirmed</i>) ↑↓ % of 16-19 year olds participating in education, employment or training (<i>proposed measure – to be confirmed</i>) ↓ % of 16-64 year olds claiming out of work benefits (<i>proposed measure – to be confirmed</i>) 		

3	Community Plan Strategic Priority Area Economy and Environment	Fairer East Ren Key Focus Moving Around
<p>What our communities told us: During our engagement our communities highlighted they felt that it was difficult to get around in East Renfrewshire. Specific concerns were highlighted about reliability and affordability of buses, accessibility at train stations and public transport link to services, particularly health and social care. Communities also raised the difficulties in moving across East Renfrewshire.</p> <p>Through the Glasgow Region City Deal over £1.13 billion is being invested in East Renfrewshire, Glasgow & the Clyde Valley, which will deliver a range of improved transport links, including a new train station at Barrhead South and improvements in the road connections between Barrhead and Eastwood.</p>		
<p>The Fairer East Ren outcome we want is - East Renfrewshire’s transport links are accessible, attractive and seamless</p>		
<p>Key facts and figures</p> <div style="display: flex; justify-content: space-around; align-items: flex-start;"> <div style="text-align: center;">   <p>50% of Citizens Panel respondents agree or strongly agree that it is easy to get to local shops, services, leisure facilities and places of employment.</p> </div> <div style="text-align: center;">   <p>44% of Citizens Panel respondents said that they live in East Renfrewshire as there are good transport links</p> </div> <div style="text-align: center;">   <p>42.5% of pupils in full-time education at school, report that their main method of travel to school is by walking or cycling.</p> </div> </div>		
<p>We propose to measure and report on the following:</p> <ul style="list-style-type: none"> ↑ % of residents who agree that accessing shops, services, employment and leisure by public transport is easy (<i>proposed measure – to be confirmed</i>) ↑ % of people satisfied with the quality of public transport (<i>proposed measure – to be confirmed</i>) ↑ % of ERC pupils reporting that their usual method of travel to school is by walking or cycling (<i>proposed measure – to be confirmed</i>) 		

4	Community Plan Strategic Priority Area Safer, Supportive Communities	Fairer East Ren Key Focus Improving positive mental health and wellbeing
<p>What our communities told us: Throughout our engagement residents and communities highlighted concerns about young people’s mental health and wellbeing, and how to access key support services. Focusing services on prevention/early intervention, creating specialist employability support and increasing mental health awareness in schools were some of the solutions suggested by communities.</p> <p>Reporting poor mental health is a vital step on the journey to recovery. We want to avoid using measures or creating incentives that may encourage services to under report mental health problems or discourage the uptake of vital services. We do want people to access support and feel better on their own terms.</p> <p>Our approach to improving positive mental health and wellbeing follows the principles set out in the Scottish Government’s Mental Health Strategy 2017-2027: prevention and early intervention; access to treatment, and joined up accessible services; the physical wellbeing of people with mental health problems; and rights, information use, and planning.</p> <p>There are strong links between our approach to improving mental health and reducing social isolation and loneliness, and there will be some areas of crossover in how we address these priorities</p>		
<p>The Fairer East Ren outcome we want is - Our residents’ mental health, wellbeing and quality of life is improved</p>		
<p>Key facts and figures</p>		
<div style="display: flex; justify-content: space-around;"> <div data-bbox="421 699 875 978">  <p>14,000 people prescribed medication for anxiety, depression or psychosis</p> </div> <div data-bbox="1301 699 1883 1018">  <p>295 mental health related hospital admissions in 2015/16</p> <p><small>Source: ISD Scotland, 2017</small></p> </div> </div> <div style="display: flex; justify-content: space-around; margin-top: 20px;"> <div data-bbox="192 1038 1104 1193"> <p>According to the SIMD 2016 statistics, this equates to 15% of East Renfrewshire’s total population.</p> <p>However, this measure does not detail the length of time people are prescribed this medication nor the dosage taken. This is purely the amount of prescriptions given in a year.</p> </div> <div data-bbox="1155 1038 2024 1129"> <p>East Renfrewshire’s mental health related hospital admissions in 2015/16 translates as 3.1 admissions per 1,000 residents.</p> <p>This is the highest rate East Renfrewshire has experienced in a decade.</p> </div> </div>		
<p>We propose to measure and report on the following:</p> <ul style="list-style-type: none"> ↓ Mental health hospital admissions per 100,000 population (<i>proposed measure – to be confirmed</i>) <i>Other measures being developed by delivery group by relevant delivery group</i> 		

5	Community Plan Strategic Priority Area Older People and People with Long Term Conditions	Fairer East Ren Key Focus Reducing social isolation and loneliness and increasing safety
<p>What our communities told us: During our engagement, residents repeatedly highlighted the benefits and stressed the importance of a strong sense of community, social connections and feeling safe. We understand the damaging impact of loneliness and social isolation, not only on the individual affected, but the wider impact on our communities.</p> <p>The Scottish Government recently drafted a national strategy to tackle social isolation and loneliness. Loneliness and social isolation can affect people of all ages, from all walks of life. However, key life stages such as illness and major transitions into parenthood, or out of employment, were found to exacerbate the effects of isolation and loneliness. The effect of social isolation and loneliness on older people, carers and those from minority ethnic communities were key messages from our community engagement, with many highlighting a lack of community spirit as an important factor. Suggested solutions included tackling travel affordability issues, increasing social opportunities for older people and improving information about existing groups and activities in the community.</p>		
<p>The Fairer East Ren outcome we want is - Residents are safe and are more socially connected within their communities</p>		
<p>Key facts and figures</p>		
<div style="display: flex; justify-content: space-around; align-items: flex-start;"> <div data-bbox="412 659 896 957" style="text-align: center;">  <p>1,800 people in East Renfrewshire living with dementia</p> <p><small>Source: Alzheimer Scotland</small></p> </div> <div data-bbox="1330 715 1850 917" style="text-align: center;">  <p>Around 850 community groups in East Renfrewshire</p> <p><small>Source: Community Mapping Database</small></p> </div> </div> <p>Around two thirds of people living with Dementia in East Renfrewshire are female.</p> <p>Of the 850 community groups operating in East Renfrewshire, around 5% of these groups specifically cater for older people, although there are a range of other groups they can get involved in.</p> <p>According to the 2011 Census, around 7,000 people are affected by a disability or long-term health condition which limits their day to day activities a lot.</p> <p>Groups held on our database range from sports clubs and religious groups to uniformed organisations such as Brownies, as well as early years groups such as parent & infant support groups</p>		
<p>We propose to measure and report on the following:</p> <ul style="list-style-type: none"> ↑ % of adults who provided unpaid help to organisations or other groups in the last 12 months (<i>proposed measure – to be confirmed</i>) ↑ % of residents who agree that they live in a community that supports older people (<i>proposed measure – to be confirmed</i>) ↑ % of people who report ‘seeing people’ needs fully met (<i>proposed measure – to be confirmed</i>) ↑ % of adults (65+) who believe they can influence local decision making (<i>proposed measure – to be confirmed</i>) 		

How we will deliver our plans

Delivering our Community Plan

Community planning partners will have their own detailed delivery plans for the area and these will demonstrate how each partner will contribute to the delivery of the CPP's Community Plan Outcomes. Some of these are highlighted below:

East Renfrewshire Council's [Outcome Delivery Plan](#) – The Council's rolling three-year plan which demonstrates the contribution of Council services towards delivering the Community Plan and Fairer East Ren

East Renfrewshire Health and Social Care Partnership's Strategic Plan – sets out their commitment to by working in partnership with people, families and carers, communities, staff and other partner organisations to ensure residents of all ages are healthy and cared for.

Police Scotland's [Local Policing Plan for East Renfrewshire](#) - the main purpose of policing is to improve the safety and well-being of persons, localities and communities in Scotland, the Local Policing Plan sets out how we will work to achieve this through the setting of local priorities shaped in consultation with our partners, communities and our most current data.

Scottish Fire and Rescue's [East Renfrewshire Local Fire and Rescue Plan](#) – The local plan has been developed to support the delivery of agreed local outcomes for East Renfrewshire's communities with the ambition of working in partnership to improve community safety, enhance the well-being of those living in East Renfrewshire and tackle issues of social inequality

Scottish Enterprise's [Strategic Plan](#) - Launched in April 2015, Scottish Enterprise's Strategic plan set out the actions to improve Scotland's productivity and help build a globally competitive and inclusive economy.

West College Scotland [Regional Outcome Agreement](#) - The Outcome Agreement reflects the College's commitment to responding to the educational and skills needs within our region, aligned to the Scottish Funding Council's priorities.

Skills Development Scotland's Corporate Plan - [SDS vision for 2015-2020](#) - SDS have worked with partners and with colleagues throughout the organisation to make sure this plan is truly customer focused and reflects the shared vision of our partners. It is an ambitious programme designed to Make Skills Work for Scotland.

East Renfrewshire Culture and Leisure's [Business Plan for 2018-19](#)- The business plan sets out the Trust's plans for sports, leisure, social and community activities; libraries, information services and learning; arts and heritage.

Strathclyde Partnership for Transport's [A Catalyst for Change: The Regional Transport Strategy for the west of Scotland 2008-2021](#) sets out the Vision, Strategic Priorities and Outcomes for transport in the west of Scotland. The [Transport Outcomes Report](#) sets out specific priorities for East Renfrewshire.

East Renfrewshire Voluntary Action- Strategic Plan sets out how they will work to create sustainable communities, where local people lead in the design and delivery of locally owned, locally led services

Delivering a Fairer East Ren

Fairer East Ren will continue to evolve over its lifetime adapting to further community engagement and emerging national and local partner priorities.

East Renfrewshire Community Planning Partnership has tasked key delivery partnerships to set out how we will deliver against the Fairer East Ren intermediate outcomes in the plan and how we will measure our progress towards them. These plans will be published separately.

Fairer East Ren Int. outcome	The impact of child poverty is reduced	Residents have the right skills, learning opportunities and confidence to secure and sustain work.	East Renfrewshire's transport links are accessible, attractive and seamless	Residents' mental health and wellbeing is improved.	Residents are safe and are more socially connected within their communities.
Delivery group	Improving Outcomes for Children and Young People	Local Employability Partnership	Transport partnership group	Improving outcomes for Adults group	

Our Performance and Accountability Review group has responsibility for overseeing our progress towards a Fairer East Ren.

As we continue to deliver a Fairer East Ren we will create a framework for working together with community groups and organisations who want to contribute to the plan.

Contact for further information

Partnerships Team
 Corporate and Community Services
 Council Headquarters, Eastwood Park
 Rouken Glen Road
 Giffnock, G46 6UG
 0141 5773499
listening@eastrenfrewshire.gov.uk

BLANK PAGE

Annex 1- Delivering a Fairer East Ren- Driver Diagrams- As at October 1st 2017

Population Outcome
The outcome we want is....

Intermediate Outcome
We will know we are making good steps along the way
WHEN....

Our contribution
So what we need to achieve is...

All children in East Renfrewshire experience a stable and secure childhood and succeed.

The impact of child poverty across East Renfrewshire is reduced.

All families can afford childcare and can meet the costs of attending school

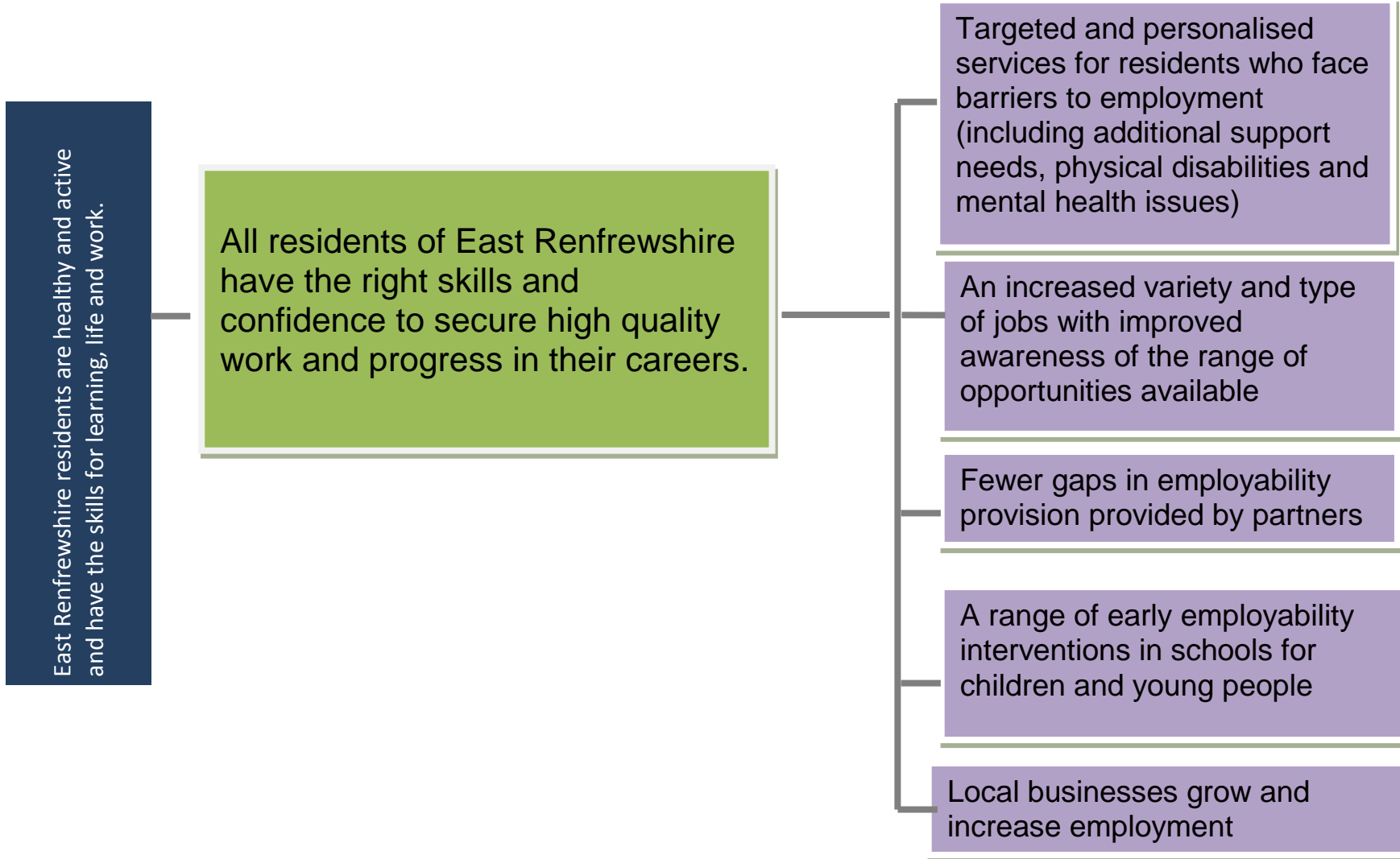
Fewer families experience in-work poverty

Children affected by poverty have attainment and achievement raised

Residents are supported through early intervention to maximise their incomes

Communities have the support they need to reduce the impact of poverty on the health and wellbeing of local people

The impact on poverty is considered in the planning and delivery of services



Population Outcome
The outcome we want is...

Intermediate Outcome
We will know we are making good steps along the way WHEN....

Our contribution
So what we need to achieve is...

East Renfrewshire is a thriving, attractive and sustainable place for residents and businesses

East Renfrewshire's transport links are accessible, attractive and seamless

Improved access to services and facilities

An integrated, optimal strategic transport network

Attractive, Seamless Reliable Travel

More sustainable travel

Population Outcome
The outcome we want is....

Intermediate Outcome
we will know we are making good steps along the way WHEN....

Our contribution

East Renfrewshire residents are safe and live in supportive communities

Our residents' mental health, wellbeing and quality of life is improved

- Improved mental health and wellbeing through a preventative approach
- Improved mental health and wellbeing through early intervention
- High quality and accessible support in times of crisis
- Access to a range of services to support recovery from mental ill-health for residents and their families
- Residents and communities protected from the negative impact on mental health and wellbeing resulting from drug use and alcohol misuse

The outcome we want is....

We will know we are making good steps along the way WHEN....

So what we need to achieve is...

Older people and people with long term conditions in East Renfrewshire are valued; their voices are heard and they enjoy full and positive lives.

Residents are safe and are more socially connected within their communities

Communities use the information, skills and resources they have to reduce isolation.

Residents have opportunities to engage in meaningful activities

Residents experience fewer barriers to getting involved in community life

People most at risk of isolation can re-connect with their communities

Communities feel safe and the impact of antisocial behaviour, disorder and violent crime is reduced

BLANK PAGE

Annex 2- Links with National Outcomes

The Community Empowerment Act requires us to demonstrate the links between our plan and the national outcomes, which is set out in the table below.

Fairer East Ren Priority		National Outcome
Reducing the impact of Child Poverty	→	We have tackled the significant inequalities in Scottish society.
Promoting employability	→	We realise our full economic potential with more and better employment opportunities for our people.
Moving around	→	We live in well-designed, sustainable places where we are able to access the amenities and services we need.
Improving positive mental health and wellbeing	→	We live longer, healthier lives.
Reducing social isolation, loneliness and increasing safety	→	Our people are able to maintain their independence as they get older and are able to access appropriate support when they need it.
Influence and sense of control	→	Our public services are high quality, continually improving, efficient and responsive to local people's needs.

The following national outcomes are present across all our priorities
We have strong, resilient and supportive communities where people take responsibility for their own actions and how they affect others.
We have improved the life chances for children, young people and families at risk.

BLANK PAGE