

EAST RENFREWSHIRE COUNCILCABINET17 May 2018Report by Deputy Chief ExecutiveLocal Scrutiny Plan 2018-19**PURPOSE OF REPORT**

1. This report presents the Local Scrutiny Plan (LSP) for 2018/19, which sets out the planned external scrutiny activity of East Renfrewshire Council over the next year. The report is based on a Shared Risk Assessment (SRA) undertaken by all scrutiny bodies who engage with the Council. The plan for 2018/19 is attached as an annex and can also be accessed at Audit Scotland's website<sup>1</sup>.

**RECOMMENDATIONS**

2. The Cabinet is asked to:
- (a) note the assessment by the Local Area Network (LAN) of external scrutiny bodies that no *specific* risk areas have been identified which require additional scrutiny beyond routine planned work programmes; and
  - (b) note the areas that will be subject to external monitoring in 2018/19 (financial sustainability, housing and homelessness) and the planned external scrutiny activities by bodies in the LAN this year are listed in Appendix 1 of the Local Scrutiny Plan.

**BACKGROUND**

3. The Local Area Network (LAN) brings together the main scrutiny bodies including Audit Scotland, Care Inspectorate, Education Scotland and the Scottish Housing Regulator with the aim of improving the co-ordination of strategic scrutiny activity amongst these bodies. The LAN share relevant information held about East Renfrewshire Council and agree an annual co-ordinated scrutiny plan for the Council.

4. Over the years changes have been made to further streamline the process. The Local Scrutiny Plan (LSP) is based on an annual shared risk assessment (SRA) undertaken by the LAN. The Plan sets out the external scrutiny of the Council for the forthcoming year.

5. Each council in Scotland has undergone a similar process to determine planned levels of scrutiny. All LSPs 2018/19 are published on Audit Scotland's website and a copy of East Renfrewshire's report will also be posted on the Council's website.

---

<sup>1</sup>[East Renfrewshire Council Local Scrutiny Plan 2018/19](#)

## SHARED RISK ASSESSMENT (SRA) 2018/9 SUMMARY

6. The LAN's overall assessment of the Council in 2018/19 continues to be positive and no areas where *additional* specific scrutiny is required this year have been identified. The report identifies two areas requiring ongoing external audit oversight and monitoring: financial sustainability and housing and homelessness.

7. Financial sustainability will continue to be a focus as we, along with all other councils across Scotland, are required to make savings over the next three years. In East Renfrewshire we estimate the funding gap over this period to be about £28.6million. The Council's decision to increase council tax levels and utilise reserves at the budget setting meeting in March reduced the savings gap to £20.3million. The Council agreed a set of savings proposals to cover the savings gap.

8. The second area highlighted in the plan for ongoing monitoring was regarding aspects of housing. The Scottish Housing Regulator (SHR) carry out an annual risk assessment of the performance of all Scottish social landlords. The report outlining the outcome from this year's risk assessment and the reasons for the level of engagement with Registered Social Landlords and Councils in 2018/19 is attached at Annex 2. More than half of Scottish councils will be scrutinised on aspects of their housing function by SHR. They will engage at a high level of scrutiny with four councils and at a lesser "on going and monitoring" level with 16 councils, including East Renfrewshire.

9. The LSP references two indicators in relation to homelessness that the SHR will monitor performance on in 18/19. These are the percentage of applicants sleeping rough, and the percentage of 'Returned to' households that had been assessed as unintentionally homeless<sup>2</sup>.

10. The prevention of rough sleeping is a high priority for the Housing Service. Currently, our Housing Services provides a 24 hour service to homeless applicants in order to prevent rough sleeping yet rough sleeping is increasing. A review of homeless presentations over the past 12 months is being carried out to determine why rough sleeping is an issue.

11. In addition, Housing Services also provide an offer of accommodation to all unintentionally homeless households, yet some chose to return to their previous accommodation. It is important to ensure that this is a positive outcome for households. Housing Services have reviewed the allocation policy and subject to Cabinet approval will implement the new policy in 2018/19. The new policy will make better use of existing council stock and provide all households with greater choice in the homes they are allocated.

12. The SHR will also continue to monitor the progress of the Significant Performance Failure improvement plan in relation to our engagement with Registered Tenant Organisations (RTO's). Recent discussions with SHR about the implementation of the improvement plan were positive and Housing Services continues to work with local Registered Tenant Organisations to improve and increase tenant and customer engagement during 2018/19.

13. The LSP states that on education and children's services outcomes for children and young people are above the national average and improving and there will be no additional scrutiny in 2018/19 apart from the routine school inspection programme. Similarly, the LSP is positive about the provision of adults and children's social care services, demonstrating clear, prioritised plans for sustaining and improving performance.

---

<sup>2</sup> All Councils submit data on a quarterly basis to the Scottish Government on the delivery of our homelessness duties. This includes a measure which captures what the final accommodation was for a household once the case is closed. The term 'returned to' refers to the outcome where the household returned to their previous/present accommodation.

## PLANNED SCRUTINY ACTIVITY

14. Whilst no specific additional scrutiny risks have been identified, the Council will be subject to some planned areas of scrutiny including a performance audit of the Council's housing benefit service which is scheduled to take place during May to June 2018 and at the same time a follow up audit on the Council's Best Value Assurance Report. An action plan based on the key findings was approved at Council in December 2018 and a report demonstrating the good progress made in implementing the action plan was considered at Cabinet on 26 April 2018. The Best Value follow up audit will look at the Council performance on an indicator about people over 65+ with intensive needs receiving care at home. This indicator is part of the national Local Government Benchmarking Framework. Comparative performance on this indicator along with the others in the set, was scrutinised at a Cabinet on 5 April 2018.

15. The Council will potentially participate in a number of nationally driven risk based audits and reviews during 2018/19. These are listed in Appendix 1 of the LSP and include a joint inspection of services for children and young people, led by the Care Inspectorate. The timing of this audit and the Council's involvement is yet to be confirmed.

16. The Council will also continue to be subject to routine scheduled audits, inspections and monitoring from each of the scrutiny bodies. This includes, for example, routine inspections of schools and care establishments by Education Scotland and the Care Inspectorate.

## CONCLUSION

17. The Local Scrutiny Plan 2018/19 presents a positive external risk assessment of our key services. This provides external validation of our approaches to managing high quality services and serves to demonstrate our ongoing commitment to making people's lives better and delivering positive outcomes for our customers and residents across East Renfrewshire.

## RECOMMENDATIONS

13. The Cabinet is asked to:

- (a) note the assessment by the Local Area Network (LAN) of external scrutiny bodies that no *specific* risk areas have been identified which require additional scrutiny beyond routine planned work programmes; and
- (b) note the areas that will be subject to external monitoring in 2018/19 (financial sustainability, housing and homelessness) and the planned external scrutiny activities by bodies in the LAN this year are listed in Appendix 1 of the Local Scrutiny Plan.

## REPORT AUTHOR

Morag Brown, Policy and Improvement Manager, 0141 577 3162

[morag.brown@eastrenfrewshire.gov.uk](mailto:morag.brown@eastrenfrewshire.gov.uk)

Caroline Innes, Deputy Chief Executive

Cabinet contact: Councillor Tony Buchanan, Leader of the Council,

## BACKGROUND PAPERS

Local Scrutiny Plan 2017/18, Cabinet, 22 June 2017

Financial Planning 2018-2024, Council, 1 March 2018

Local Government Benchmarking Framework: 2016/17 Performance, Cabinet, 5 April 2018

Best Value Assurance Report - Action Plan Update, Cabinet, 26 April 2018

BLANK PAGE

# East Renfrewshire Council

## Local Scrutiny Plan 2018/19



BLANK PAGE

# East Renfrewshire Council

## Local Scrutiny Plan – April 2018 to March 2019

### Introduction

1. This local scrutiny plan sets out any scrutiny risks identified by the local area network (LAN), proposed scrutiny responses and expected scrutiny activity for East Renfrewshire Council during the financial year 2018/19.
2. The scrutiny risks and responses are based on a shared risk assessment undertaken by a local area network (LAN), comprising representatives of all the scrutiny bodies who engage with the council. The shared risk assessment process draws on a range of evidence with the aim of determining any scrutiny risks in the council and the IJB.
3. Expected scrutiny activity across all councils in Scotland informs the National Scrutiny Plan for 2018/19, which is available on the Audit Scotland website.

### Scrutiny risks

4. The 2018/19 shared risk assessment process has not identified, from its assessment for East Renfrewshire Council, any additional risk areas where specific scrutiny is required, other than that which is nationally directed or part of ongoing work programmes by Scrutiny Bodies. However, the following areas were identified by the LAN as requiring oversight and monitoring.
5. **Financial sustainability:** The council continues to face significant financial challenges. A public consultation on savings proposals of around £28 million was undertaken in October 2017. The council's latest estimate is a funding gap of £28.581 million over the years 2018/19 to 2020/21. The council has approved an increase in council tax reducing the savings required to £23.7 million. Savings of £20.3 million have been approved by the council in March 2018 along with the use of some use of reserves over period 2018/19 to 2020/21. There is a risk that the council is unable to deliver these significant savings over the medium term.
6. External auditors will continue to monitor developments through the 2017/18 annual audit process and Best Value audit work.
7. In all other areas there has been no change to the level of required scrutiny from last year. The LAN are satisfied that the required scrutiny will be provided by ongoing oversight and monitoring as part of routine ongoing inspection work, or part of planned national activity.
8. **Housing and Homelessness:** To assess the risk to social landlord services, the Scottish Housing Regulator (SHR) has reviewed and compared the performance of all Scottish social landlords to identify the weakest performing landlords. In relation to the council's homelessness service, it identified risks in relation to percentage of applicants sleeping rough, and the percentage of 'Returned to' households that had been assessed as

unintentionally homeless. The council will continue to develop its actions from its Significant Performance Failure improvement plan.

9. **Education and Children's Services:** The council has continued to build upon its strengths and has demonstrated further improvements across a wide range of outcomes. Officers have provided clear strategic direction in taking forward Curriculum for Excellence and other national priorities and this has resulted in planned and coherent approaches. There is strong strategic leadership in Education in East Renfrewshire Council. The council has appropriate governance in place to ensure that educational provision is well-organised and well-led. Scrutiny outcomes, including inspections, have been extremely positive in recent years. Outcomes for children and young people are above the national average and generally improving. There are significant strengths in the approach taken to quality improvement within education.
10. East Renfrewshire Council is receiving universal support from the Scottish Attainment Challenge. Schools in East Renfrewshire have Pupil Equity Funding plans in place and are being progressed. Education Scotland will continue to liaise with establishments as appropriate. East Renfrewshire Council is receiving a total PEF allocation across Primary, Secondary and Special Schools of £1,370,400. Twenty-one primary schools have allocations that range between £7,200 (Calderwood Lodge) - £123,600 (Carlibar). One primary school currently has no funding. Seven secondary schools have an allocation of between £40,800 (Mearns Castle High School) - £66,000 (Woodfarm High School). One special school has an allocation of £105,600. The local authority quickly produced their own guidance for schools providing a clear rationale for improvement and linking clearly to national operational guidance. There is an audit toolkit to help schools self-evaluate and establish current needs. Reporting procedures are made clear and in line with best practice. It was decided and agreed that a few schools with the greatest level of funding prepare a separate PEF plan to go alongside the school improvement plan. The guidance also includes a suitable range of evidence to help decision-making, for example EEF.
11. Overall, no significant issues are raised in respect of East Renfrewshire Council's educational provision and therefore there will be no additional scrutiny in 2018/19 beyond the general inspection programme.
12. **Social Care Services:** Overall there are no causes for concern in the level of service performance in adults and children's services. Within children's services, there are no red RAG ratings in the most up to date performance report dated. Appointments have been made for both adult and child protection leads within an overarching stable leadership group which prioritises continuous improvement. Strategic plans are clear and outline priorities for sustaining and improving performance.
13. There has been a steady decrease in the number of children and young people on the child protection register and audit activity has been planned to provide assurance about the outcomes for children and young people just below the child protection threshold. A recent audit of IRDs (interagency/initial referral discussions) was positive and 100 per cent of the sample had attendance from police, health and social work. A recent re-structure is being reviewed and there appears to be a willingness to continually see how services can be delivered as efficiently and effectively as possible within budgetary



restrictions. One SCR has been undertaken and East Renfrewshire Council has maintained contact and dialogue with the Care Inspectorate throughout the process. The Care Inspectorate carried out an inspection of Health and Social Care Partnership's Home Care Service in February 2017 and it was evaluated as very good.

14. One issue was raised at the LAN in relation to the council's performance in the Local Government Benchmarking Framework for people aged 65 and over with intensive needs receiving care at home. This emerged from Audit Scotland's Best Value review in 2017. This point is addressed at paragraph 18 below.

## Scrutiny activity

15. Any expected scrutiny activity between April 2018 and March 2019 is shown in Appendix 1. For some of their scrutiny activity in 2018/19, scrutiny bodies are still to determine their work programmes and which specific council areas they will cover. Where a council is to be involved, the relevant scrutiny body will confirm this with the council and the appropriate LAN lead.
16. In addition to specific work shown in Appendix 1, routine, scheduled audit and inspection work will take place through the annual audit process and the ongoing inspection of school and care establishments by Education Scotland and the Care Inspectorate respectively. The outcomes of this work will help to inform future assessment of scrutiny risk.
17. Audit Scotland: Follow-up of Best Value assurance report: The Accounts Commission agreed the overall framework for a new approach to auditing Best Value in June 2016. A Best Value audit was carried out at East Renfrewshire Council during 2017 with the BVAR being published in November 2017. Progress against the recommendations of the BVAR will be followed up during 2018, with the findings being reported in the Report to Members on the 2017/18 Audit. This follow up will include further consideration of the council's performance on the indicator relating to people aged 65 and over with intensive needs receiving care at home
18. **Audit Scotland: Housing Benefits Performance Audit:** The Accounts Commission has responsibility for the audit of housing benefit services in Scotland and Audit Scotland carries out a programme of performance audit work every year. A risk assessment of the housing benefits functions across all councils is completed and used to identify those councils to be selected for review. It is currently planned to carry out a performance audit of the housing benefits service within East Renfrewshire Council as part of the 2017/18 audit. The outcome of this will be reported to officers in a separate audit report and a summary of the outcome and any significant findings will be included in our annual audit report.
19. The relative performance of all councils' housing benefits services is kept under review throughout the year. This may result in a need to reschedule a review or substitute one council for another, should it not prove possible to proceed with the original selection or in response to emerging or escalating risks.

- 20. Audit Scotland: National Performance Audits:** Audit Scotland plans to undertake performance audit work in a range of areas covering local government during 2018/19. These include City Deals, changing models of health and social care integration and children and young people's mental health services. In addition, Audit Scotland will publish the findings of a performance audit of Arms-Length External Organisations (ALEOs). Details of future audit work are available on the Audit Scotland website.
- 21. Scottish Housing Regulator:** The Scottish Housing Regulator (SHR) may carry out thematic inquiries during 2018/19 or it may carry out survey or on-site work to follow up on published thematic reports. The SHR will also review the Scottish Social Housing Charter data submitted by landlords and carry out data accuracy visits during the second quarter of 2018/19. Where councils are to be involved in a thematic inquiry, any follow-up work to a published thematic inquiry, or a data accuracy visit, the SHR will confirm this directly with the council and the LAN lead.
- 22. Care Inspectorate: Joint Inspections of Services for Children and Young People:** From April 2018, Scottish ministers have asked the Care Inspectorate to lead another programme of joint inspections of services for children and young people, with scrutiny partners Education Scotland, Healthcare Improvement Scotland and Her Majesty's Inspectorate of Constabulary in Scotland. They have asked partners to provide assurance about how community planning partners are protecting and meeting the needs of children and young people who have experienced, or are at risk of, abuse and neglect, and how they are working together to improve outcomes for children and young people who are subject to corporate parenting requirements. The Care Inspectorate intend to carry out five joint inspections in 2018/19. It was agreed with ministers that, for the duration of this programme of inspections, the Care Inspectorate will incorporate an area of specific enquiry each year, with the aim of identifying key lessons and best practice which all partnerships could use to support their own continuous improvement. An overview report will be published at the end of each year. The Care Inspectorate will inform the council if East Renfrewshire Council is selected as one of the five joint inspections in 2018/19.
- 23. Care Inspectorate: Community Justice:** The Care Inspectorate are planning to work with Community Justice Scotland and other partners to support improvement in the implementation of the community justice strategy, to identify any particular risks and to carry out targeted scrutiny where this is required.
- 24. Care Inspectorate: Adult Support and Protection:** The Inspectorate has also completed a thematic review of adult support and protection, across six partnership areas in collaboration with HMICS and Healthcare Improvement Scotland. A report is scheduled for publication by the end of March 2018. During 2018/19, the Care Inspectorate will encourage partnerships to use this learning to review their own practice and to take any action necessary to strengthen their response to concerns.
- 25. Education Scotland:** Education Scotland will review the quality of Careers Information, Advice and Guidance (CIAG) provided by Skills Development Scotland. This review is scheduled at the council for November 2018.

March 2018

BLANK PAGE

## Appendix 1: Scrutiny activity

Scrutiny body	Scrutiny activity	Date
Audit Scotland (as external auditor)	Follow-up audit of the East Renfrewshire Council BVAR November 2017	May to June 2018
Audit Scotland (as external auditor)	Housing Benefits Performance Audit	May to June 2018
Audit Scotland	Audit Scotland plans to undertake performance audit work on City Deals, changing models of health and social care integration, and children and young people's mental health services.  The findings of a performance audit of Arms-Length External Organisations (ALEOs) will be published in Spring 2018.	Dates to be determined
Care Inspectorate	Joint inspections (with scrutiny partners Education Scotland, Healthcare Improvement Scotland and Her Majesty's Inspectorate of Constabulary in Scotland) of services for children and young people.	CI to inform the council if selected for inspection in 2018/19
Education Scotland	Education Scotland will review the quality of Careers Information, Advice and Guidance (CIAG) provided by Skills Development Scotland.	November 2018
Scottish Housing Regulator (SHR)	The Scottish Housing Regulator (SHR) will monitor the council's progress in addressing the housing and homelessness service weaknesses identified in this plan. It will review the council's quarterly performance management reports and meet council officials as necessary. The SHR may carry out thematic inquiries during 2018/19 or it may carry out survey or on-site work to follow up on published thematic reports. The SHR will also review the Scottish Social Housing Charter data submitted by landlords and carry out data accuracy visits during the second quarter of 2018/19. Where councils are to be involved in a thematic inquiry, any follow-up work to a published thematic inquiry, or a data accuracy visit, the SHR will confirm this directly with the council and the LAN lead.	Quarter 2 2018/19


# East Renfrewshire Council

## Local Scrutiny Plan 2018/19

### A summary of local government strategic scrutiny activity

This report is available in PDF and RTF formats,  
along with a podcast summary at:

[www.audit-scotland.gov.uk](http://www.audit-scotland.gov.uk) 

If you require this publication in an alternative  
format and/or language, please contact us to  
discuss your needs: 0131 625 1500  
or [info@audit-scotland.gov.uk](mailto:info@audit-scotland.gov.uk) 

For the latest news, reports  
and updates, follow us on:



Audit Scotland, 4th Floor, 102 West Port, Edinburgh EH3 9DN

T: 0131 625 1500 E: [info@audit-scotland.gov.uk](mailto:info@audit-scotland.gov.uk) 

[www.audit-scotland.gov.uk](http://www.audit-scotland.gov.uk) 

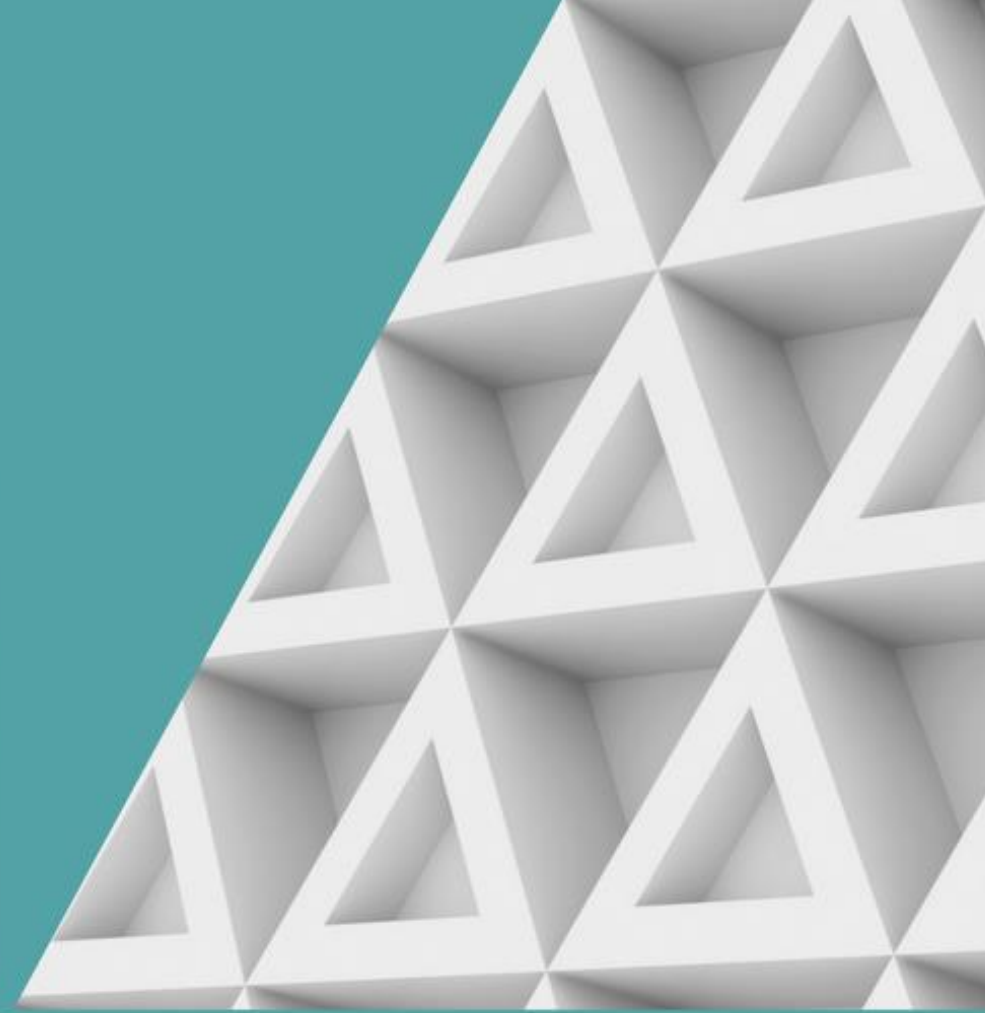


**Scottish Housing  
Regulator**

## **Risk Assessment**

Summary outcomes

March 2018



BLANK PAGE



## About us

We are the independent regulator of social landlords in Scotland. Our one statutory objective is to safeguard and promote the interests of:

### We protect:

nearly

**610,000** tenants

who receive services of social landlords

over

**123,000** owners

who receive services of social landlords

around

**40,000** people & their families

who may be homeless and seek help from local authorities

over

**2,000** Gypsy/Travellers

who can use official sites provided by social landlords

### We regulate:



around

**200**

Social landlords



**160**

Registered Social Landlords



**32**

Local Authorities

### How we regulate....

Our Regulatory Framework explains how we regulate social landlords and is available on our website [www.scottishhousingregulator.gov.uk](http://www.scottishhousingregulator.gov.uk)

## About this booklet

Each year we carry out an annual risk assessment of the risks facing all registered social landlords (RSLs). We also work with Audit Scotland and other scrutiny bodies through Local Area Networks (LANs) on a joint approach to the scrutiny of local authorities.

This booklet summarises the outcome from this year's risk assessment and sets out the reasons for our engagement with RSLs and local authorities during 2018/19.



### [Read our Regulation Plans](#)




### **Read our Local Scrutiny Plans (LSPs)**

LSPs will be published by Audit Scotland and will be available on our website in April.

## Our engagement with RSLs

We monitor, assess and report on the financial well-being, governance and performance of RSLs through our annual risk assessment. We use the best and most up-to-date information available to us to form a view as to whether each RSL complies with regulatory standards. This includes the annual returns that RSLs are required to submit which consist of the Annual Report on Charter (ARC), the Audited Financial Statements (AFS), Financial Forecasts and Loan Portfolio details. For any RSL, where we judge that we need further assurance, we will engage and publish details of the engagement in a Regulation Plan. We publish Regulation Plans for all RSLs which are medium or high engagement.

## Our levels of engagement

	<b>High</b>	<b>8 RSLs</b>	
	<b>Medium</b>	<b>56 RSLs</b>	
	<b>Low</b>	<b>94 RSLs</b>	

**Low engagement:** We have written to 67 of the 94 RSLs which are low engagement where we have identified a particular issue which requires the attention of the landlord but it is not proportionate for us to engage on this. We will review progress when we receive the next set of annual returns.

## RSLs we will have high engagement with



**Antonine**



**Wishaw &  
District**



**Arklet**



**Dalmuir  
Park**



**Ferguslie  
Park**



**Kincardine**



**Ruchazie**

**Wheatley  
Housing  
Group**



We will have high engagement with Wheatley as it is the largest RSL and the largest developer of affordable homes.

## Principal reasons for our engagement with RSLs

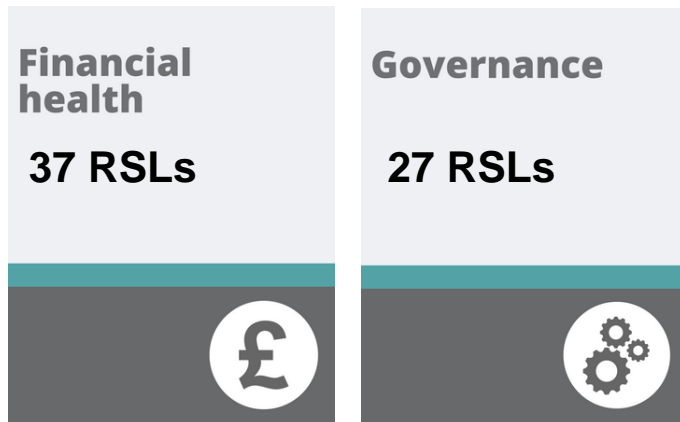
This year we are planning a small increase in the number of RSLs we are engaging with.

Social landlords are increasingly complex businesses operating in a riskier and more uncertain world. They are having to deal with a range of challenges including the impact of Welfare Reform, developments in health and social care, meeting the Energy Efficiency Standard for Social Housing as well as, for some, more complex treasury management arrangements and managing their pension liabilities.

At the same time, landlords are considering how they can contribute to the Scottish Government's ambitious targets for 50,000 affordable homes by 2021 whilst keeping rents affordable and ensuring that tenant safety is paramount.

We are also seeing a number of landlords embark on ambitious development programmes often after a significant period of time since they last developed. We are therefore planning to engage with a number of landlords to get assurance about how they plan to manage the risks associated with development.

At the heart of this challenge is the need for landlords to be well governed and financially viable. We are therefore engaging with more RSLs to get assurance about how they are managing these challenges and risks.



## Principal reason for our engagement

RSL size (by number of homes)	Financial health £	Governance 	Stock quality 	Service quality ✓
----------------------------------	-----------------------	---	--	----------------------

Under 1,000	7	19	0	0
Over 1,000	0	4	0	0
Over 1,500	30	4	0	0

## Systemically important RSLs

For some RSLs, there are certain characteristics in terms of stock size, turnover, debt and geographical location that would increase the difficulty for us to fulfil our statutory objective of protecting tenants and others if the RSL were to experience financial difficulty.

We refer to these RSLs as systemically important. We need to develop and maintain a detailed understanding of the business plans for these RSLs.

We have identified 23 RSLs as systemically important. This is one more than last year. The systemically important RSLs are below.

Albyn Housing Society	Argyll Community Housing Association
Bield Housing Association	Caledonia Housing Association
Castle Rock Edinvar Housing Association	Clyde Valley Housing Association
Dumfries and Galloway Housing Association	Cunninghame Housing Association (new)
Hanover (Scotland) Housing Association	Grampian Housing Association
Hillcrest Housing Association	Hebridean Housing Partnership
Key Housing Association	Home in Scotland
Link Group	Kingdom Housing Association
Queens Cross Housing Association	North Glasgow Housing Association
Sanctuary Scotland Housing Association	River Clyde Homes
West of Scotland Housing Association	Scottish Borders Housing Association
	Wheatley Housing Group*

\*Glasgow Housing Association, Dunedin Canmore and Cube Housing Associations all meet the criteria for systemic importance, but because they are subsidiaries of Wheatley Housing Group which is systemically important, we engage with the Group.

## Our engagement with local authorities

During 2018/19 we will engage with 20 of Scotland's 32 local authorities. We explain below which local authorities we will engage with and the reasons for this.

	<b>Scrutiny</b>	<b>4 local authorities</b>	
	<b>On-going monitoring</b>	<b>16 local authorities</b>	
	<b>No scrutiny</b>	<b>12 local authorities</b>	

We have written to four of the local authorities where we have identified a particular issue which requires the attention of the landlord but it is not proportionate for us to engage on this. We will review progress when we receive the next set of annual returns.

The term “scrutiny” is equivalent to “high engagement” and “on-going monitoring” to “medium engagement” and “no scrutiny” to “low engagement”.



## We will have a higher level of scrutiny with:



**Dumfries and  
Galloway Council**



**Glasgow City Council**



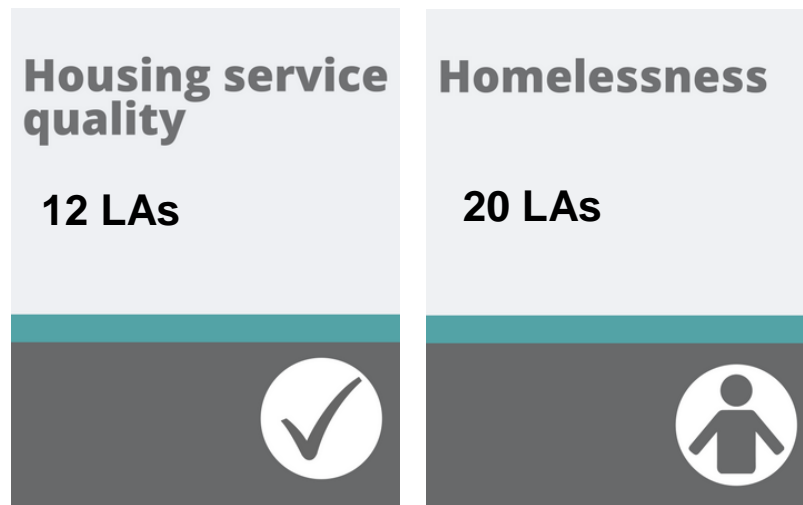
**East Dunbartonshire  
Council**



**Shetland Islands  
Council**

## Reasons for our engagement with local authorities

Local authorities in their landlord role face many similar challenges to RSLs: the impact of Welfare Reform, developments in health and social care, and meeting the Energy Efficiency Standard for Social Housing. Local authorities have also come under increasing pressure to fulfil their statutory duties to assess the needs of people who approach them for help, and to find a home for people who are homeless. The factors that can lead to homelessness can be multiple and complex and the solutions can be equally complex, often involving a range of providers and resources from across and beyond each single local authority.



**Note:** We will engage with some local authorities for more than one reason.

## On-going monitoring

This year we will regularly monitor and review the performance of 16 local authorities across a range of housing service areas where we identified areas of weaker performance in how the local authority is delivering those services to tenants. For some of these local authorities we will also monitor the performance of services delivered to homeless people and people threatened with homelessness.

## Performance in homelessness services

Performance in homeless services continues to be the main reason for our engagement with local authorities this year. We will engage with 20 local authorities on one or more of the following aspects of their homelessness service:

- access to services, advice and prevention;
- assessment: the decisions a local authority makes on homeless applications;
- outcomes for homeless people; and
- the use of temporary accommodation.

## Reviewing our regulatory engagement

Our annual risk assessment determines the engagement status of each landlord at the start of each financial year. However, in the course of the year, if circumstances change or where new information becomes available we will change the engagement status of the landlord as required. For RSLs, we may publish a new or revised regulation plan. For local authorities, we will discuss any new risks with the Local Area Network.

## Appendix 1

### We will have medium engagement with the following RSLs:

Abbeyfield Scotland	Abertay Housing Association	Albyn Housing Society
ANCHO	Angus Housing Association	Argyll Community Housing Association
Ark Housing Association	Blackwood Homes and Care	Berwickshire Housing Association
Bield Housing and Care	BT Skye and Lochalsh	Cairn Housing Association
Caledonia Housing Association	Calvay Housing Association	Cassiltoun Housing Association
Castle Rock Edinvar Housing Association	Cathcart and District Housing Association	Clyde Valley Housing Association
Craigdale Housing Association	Cube Housing Association	Cunninghame Housing Association
Dunedin Canmore Housing Association	Dumfries and Galloway Housing Partnership	Fairfield Housing Co-operative
Fife Housing Association	Forgewood Housing Co-operative	Garrion Peoples Housing Cooperative
Glasgow Housing Association	Grampian Housing Association	Hanover (Scotland) Housing Association
Hebridean Housing Partnership	Hillcrest Housing Association	Home in Scotland
Hunters Hall Housing Co-operative	Key Housing Association	Kingdom Housing Association
Langstane Housing Association	Link Group	Linthouse Housing Association
Lochaber Housing Association	Loreburn Housing Association	Maryhill Housing Association
Milnbank Housing Association	Molendinar Park Housing Association	North Glasgow Housing Association
Queens Cross Housing	River Clyde Homes	Sanctuary (Scotland) Housing Association
Scottish Borders Housing Association	Strathclyde (Camphill) Housing Society	Thistle Housing Association
Viewpoint Housing Association	Wellhouse Housing Association	West of Scotland Housing Association
Whiteinch and Scotstoun Housing Association	Yoker Housing Association	

BLANK PAGE

## Appendix 2

### We will monitor and review the performance of the following local authorities:

Aberdeen City Council	Angus Council	City of Edinburgh Council
Dundee City Council	East Ayrshire Council	East Lothian Council
East Renfrewshire Council	Falkirk Council	Fife Council
Inverclyde Council	Midlothian Council	Perth and Kinross Council
Scottish Borders Council	South Lanarkshire Council	Stirling Council
West Lothian Council		



[www.scottishhousingregulator.gov.uk](http://www.scottishhousingregulator.gov.uk)