



Meeting of East Renfrewshire Health and Social Care Partnership	Integration Joint Board
Held on	29 November 2017
Agenda Item	10
Title	Community Planning Update
<p>Summary</p> <p>This paper documents the Integration Joint Board's statutory responsibilities as a listed community planning partner and updates members on HSCP staff contribution to the development of the Local Improvement Plan (Fairer East Ren) and Locality Plans. It sets out the next phase in the process and implications for HSCP staff and resources.</p>	
Presented by	Candy Millard, Head of Strategic Services
<p>Action Required</p> <p>The Integration Joint Board is asked to:</p> <ul style="list-style-type: none"> ▪ Note and comment on the Fairer East Ren Plan (attached as Annex 1) ▪ Note and comment on the socio-economic needs assessment and community priorities for the locality planning areas of ADD2Barrhead and Auchinback (attached as Annexes 2 and 3) ▪ Endorse the HSCP involvement in the next phase in this process (Developing the delivery plans and associated outcome measures and targets to underpin Fairer East Ren and each of the locality plans) 	
<p>Implications checklist – check box if applicable and include detail in report</p> <p><input checked="" type="checkbox"/> Finance/Efficiency <input type="checkbox"/> Policy <input type="checkbox"/> Legal <input type="checkbox"/> Equalities</p> <p><input type="checkbox"/> Risk <input type="checkbox"/> Staffing <input type="checkbox"/> Property/Capital <input type="checkbox"/> Directions</p>	

BLANK PAGE

EAST RENFREWSHIRE INTEGRATION JOINT BOARD

29 November 2017

Report by Chief Officer

COMMUNITY PLANNING UPDATE

PURPOSE OF REPORT

1. The purpose of this report is to update the Integration Joint Board on our responsibilities and contribution to the Fairer East Ren Locality Improvement Plan and Locality Plans required under the Community Empowerment (Scotland) Act 2015.

RECOMMENDATION

2. The Integration Joint Board is asked to
 - Note and comment on the Fairer East Ren Plan (attached as Annex 1)
 - Note and comment on the socio-economic needs assessment and community priorities for the locality planning areas of ADD2Barrhead and Auchenback (attached as Annexes 2 and 3)
 - Endorse the HSCP involvement in the next phase in this process (Developing the delivery plans and associated outcome measures and targets to underpin Fairer East Ren and each of the locality plans)

BACKGROUND

3. The Community Empowerment (Scotland) Act was given Royal Assent in July 2015. The Act contains a number of provisions aimed at empowering communities and involving them in the design and delivery of services across the East Renfrewshire Community Planning Partnership (CPP).
4. The Community Empowerment (Scotland) Act has signalled a change in the way community planning is facilitated and strategically led. Prior to 2015, East Renfrewshire Council was the statutory lead on community planning activity; however under the new Act, the Council, Health Board, Scottish Enterprise, Police Scotland and Scottish Fire and Rescue Service have a statutory duty of shared leadership and governance of community planning activity. The Integration Joint Board is one of the additional listed partner organisations subject to community planning duties including contributing to the Local Outcomes Improvement Plan (LOIP) and Locality Plans.
5. As a listed community planning partner, the Integration Joint Board has a number of responsibilities which include
 - co-operating with other community planning partners in carrying out community planning
 - taking account of the published local outcomes improvement plan as part of its work
 - committing appropriate resources to the achievement of local outcomes set out in that plan and to secure the participation of relevant community bodies in community planning

- providing the partnership with such information about the local outcomes in the plan which the partnership may request
6. The Act requires Community Planning Partnerships to prepare Local Outcomes Improvement Plans; these replace Single Outcome Agreements and will be the key plan for tackling inequalities and closing the gap between those who experience poorer outcomes and other residents of the CPP area. In East Renfrewshire our Local Outcomes Improvement Plan is known as Fairer East Ren. This will sit below a new overarching Community Plan, which will be developed over the coming months. The Community Plan will set out the Community Planning Partnership's long term ambitions for the whole of East Renfrewshire. The new Community Plan will contain a concise set of strategic and intermediate outcomes similar to the outcomes in the previous Single Outcome Agreement.
 7. The Act also requires the CPPs to create Locality Plans for areas which are experiencing significantly poorer outcomes than East Renfrewshire or Scotland as a whole.

REPORT

Local work to develop the Fairer East Ren Priorities

8. East Renfrewshire Community Planning Partnership has been building a strong understanding of the needs of the local community since 2004. This includes both community level analysis of Census data and other published datasets such as the Scottish Index of Multiple Deprivation, health profiles and employment statistics, along with ongoing community consultation and engagement. The Health and Social Care Partnership and previous Community Health and Care Partnership have both contributed data and information to this process. In addition to underpinning the Fairer East Ren and Locality Plans this data and analysis will be used to support the HSCP Strategic Plan.
9. Following the publication of the final Scottish Government guidance, community planning partners, including HSCP representatives, agreed to build the Fairer East Ren engagement on the community priorities that had been identified through previous engagement such as East Renfrewshire Council's Citizen's Panel and Voluntary Action's Fairer Scotland conversations. From January 2017, the views of over 2,200 residents were gathered and analysed to inform the creation of Fairer East Ren. This included targeted engagement with key community groups and holding pop-up events at the Avenue, the Foundry and Eastwood Health and Care Centre, aimed at engaging residents as they carry out their day-to-day activities.
10. Fairer East Ren has identified four key themes:
 - Reducing the impact of Child Poverty
 - Improved employability
 - Improving mental health and wellbeing
 - Reducing social isolation, loneliness and increasing safety
11. These will be addressed alongside two cross cutting themes:
 - Moving around (including community and public transport)
 - Community influence and sense of control

Development of Locality Plans ADD2Barrhead and Auchenback

12. Locality plans have been developed for the two localities that have areas within the 20% most deprived areas in Scotland, with significantly poorer outcomes in health, education, housing and employment:
 - Arthurlie, Dunterlie & Dovecothall, and;
 - Auchenback
13. Plans have been developed using a community-led approach, which supported local residents to form steering groups to drive the process. Most of this work has been led by the council's community planning team but health improvement staff have been involved in supporting the process. Across the two localities a group of 20 core volunteers have formed a steering group for each area, engaged 850 residents and logged over 360 volunteer hours. In the Arthurlie, Dunterlie and Dovecothall locality area the steering group has chosen the name ADD2Barrhead to reflect the small communities making up the area.
14. Each plan has a set of priorities that reflect the unique needs of that locality. The plans form a basis for further work with locality steering groups and partners, including ourselves, to develop delivery plans which will set out specific actions to deliver against the community identified priorities.
15. ADD2Barrhead, priorities include:
 - Investing in people and the physical environment
 - Improved accessibility (including Public Transport)
 - Feeling Safe
 - Improving Greenspaces
 - Increased opportunities for young people
 - Community influence and sense of control
16. For Auchenback, key priorities identified include:
 - Health and Wellbeing
 - Community Safety
 - Improved local Environment
 - Financial Inclusion and Employability support
 - Public Transport
 - Support for Older People

Next Phase

17. Work to develop the supporting action plans will begin shortly and community planning partners are also now working to finalise the Community Plan by March 2018
18. The next phase of the planning process is the development of detailed, evidence-based actions, measures and targets that will deliver on the outcomes. Recent Scottish Government guidance recognises that community planning partnerships may require time to engage, agree and refine their plans with partners and communities.

FINANCE AND EFFICIENCY

19. The Integration Joint Board is expected to contribute appropriate resources to meet the Local Outcome Improvement Plan and Locality Plan priorities efficiently and effectively. Deployment of resources across the partnership will be kept

under review throughout the delivery of Fairer East Ren by the Community Planning Partnership.

20. Opportunities to identify and secure additional resources for this agenda have been actively pursued by community planning partners alongside the intensive work to prepare the plans.

CONSULTATION AND PARTNERSHIP WORKING

21. Fairer East Ren and Locality Plans have been developed through extensive consultation and engagement with local communities.

IMPLICATIONS OF THE PROPOSALS

Legal

22. The legal duties of the Integration Joint Board in relation to community planning are set out in paragraph 5

Equalities

23. During the development of both Fairer East Ren and Locality Plans, Equality Impact Assessments (EIA) were undertaken by the community planning team. Each plan is fundamentally focused on reducing inequality and benefiting residents across the area. It is widely recognised that the availability of data to monitor the impact of our work on particular groups can be a challenge. The EIA recommends that as we continue to implement Fairer East Ren we will investigate additional options for monitoring this impact. It is also recommended that the delivery plans that will be developed to underpin the Fairer East Ren plan consider specific equality impacts.

Risk

24. There is a risk that the expectations on us under community planning to lead and contribute to a significant number of local priorities may impact on our ability to develop and deliver our own Strategic Plan. This can be mitigated by aligning a number of our strategic planning priorities and actions to those in the Fairer East Ren plan.
25. The locality plans are for much smaller localities than our Strategic Plan. This could lead to confusion in locality planning arrangements. Our current Strategic Plan makes reference to the need to plan with communities in smaller more targeted areas so the risk of confusion within our locality plans can be mitigated by embedding priorities for the ADD2, Auchenback or any future targeted community plans within our wider Eastwood and Lavern Valley plans.
26. It is anticipated that staff from children and young people's, mental health, planning, performance, Lavern Valley and health improvement services and teams will be required to be involved in the next phase of the community planning activity.

Policy

27. None

Staffing

28. None

Property/capital

29. None

Directions

30. None

CONCLUSIONS

31. Considerable work has been undertaken by community planning partners and local communities in developing the Local Outcome Improvement plan and locality plans. These plans set out local priorities and outcomes informed by socio-economic data and community involvement. The attached plans remain part of a live process of involving and working with partners and communities, in which HSCP staff are fully involved.

RECOMMENDATIONS

32. The Integration Joint Board is asked to
- Note and comment on the Fairer East Ren Plan (attached as Annex 1)
 - Note and comment on the socio-economic needs assessment and community priorities for the locality planning areas of ADD2Barrhead and Auchenback (attached as Annexes 2 and 3)
 - Endorse the HSCP involvement in the next phase in this process (Developing the delivery plans and associated outcome measures and targets to underpin Fairer East Ren and each of the locality plans)

REPORT AUTHOR AND PERSON TO CONTACT

Candy Millard, Head of Strategic Services

Candy.Millard@eastrenfrewshire.gov.uk

0141 451 0749

November 2017

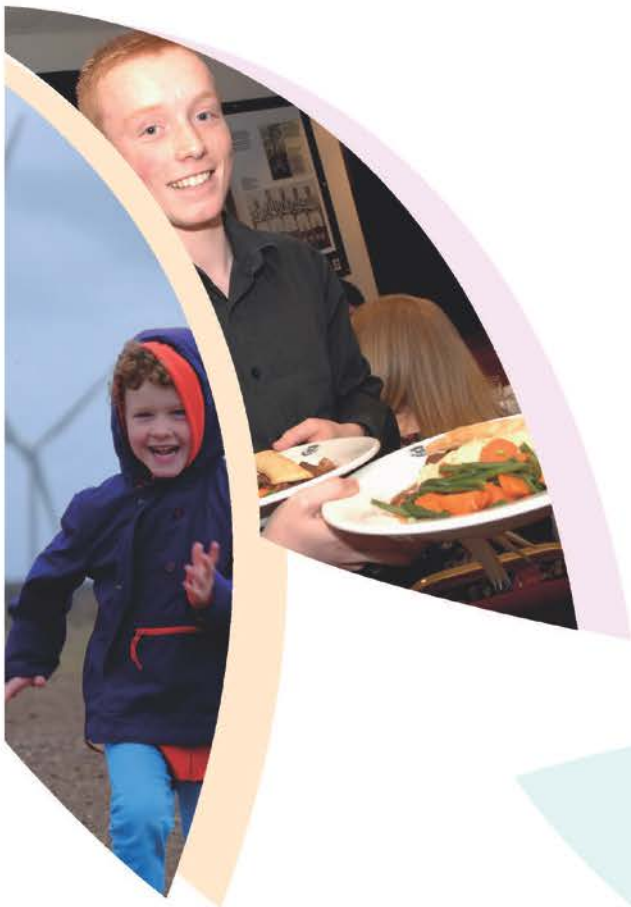
HSCP Chief Officer: Julie Murray

BACKGROUND PAPERS

None

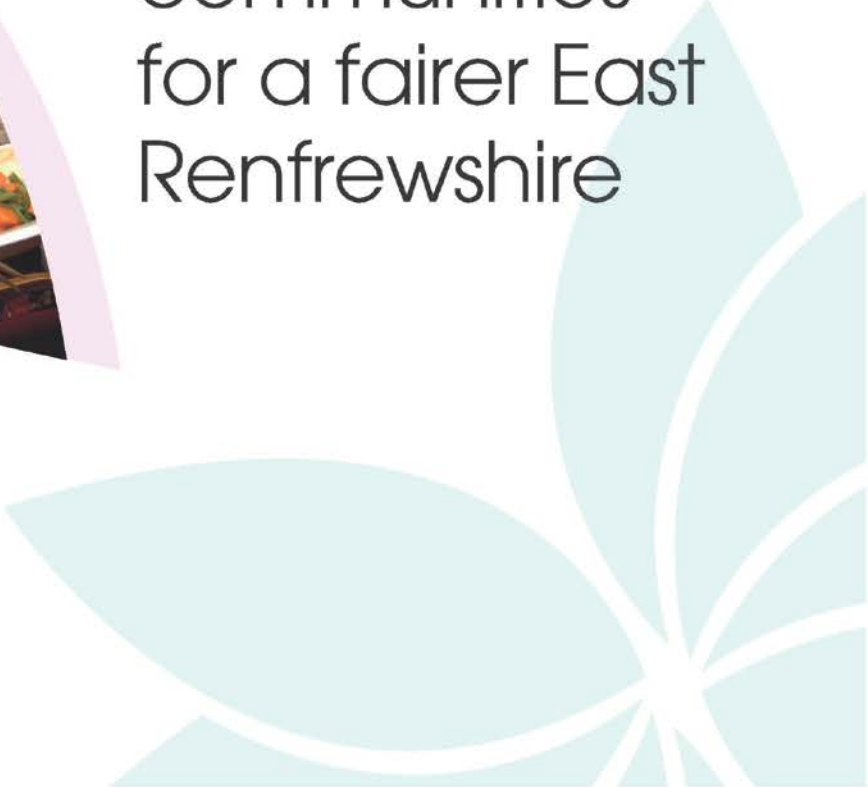
BLANK PAGE

East Renfrewshire Community Planning Partnership



Fairer EastRen

Working with
communities
for a fairer East
Renfrewshire



Introduction

East Renfrewshire Community Planning Partnership (CPP) works for and with communities to ensure everyone has an excellent quality of life. East Renfrewshire (CPP) is comprised of a range of organisations, including:

- East Renfrewshire Council
- NHS Greater Glasgow and Clyde
- Police Scotland
- Scottish Fire and Rescue Service
- Scottish Enterprise
- East Renfrewshire Integration Joint Board
- Strathclyde Partnership for Transport
- Skills Development Scotland
- Voluntary Action East Renfrewshire SCIO
- Department for Work and Pensions
- West College Scotland
- East Renfrewshire Culture and Leisure Trust

The Community Planning Partnership works together in lots of different ways to improve quality of life across East Renfrewshire and these are reflected in many different plans and strategies. The Children's Services Plan, Employability Strategy, and Community Justice Outcomes Improvement Plan are just a few examples.

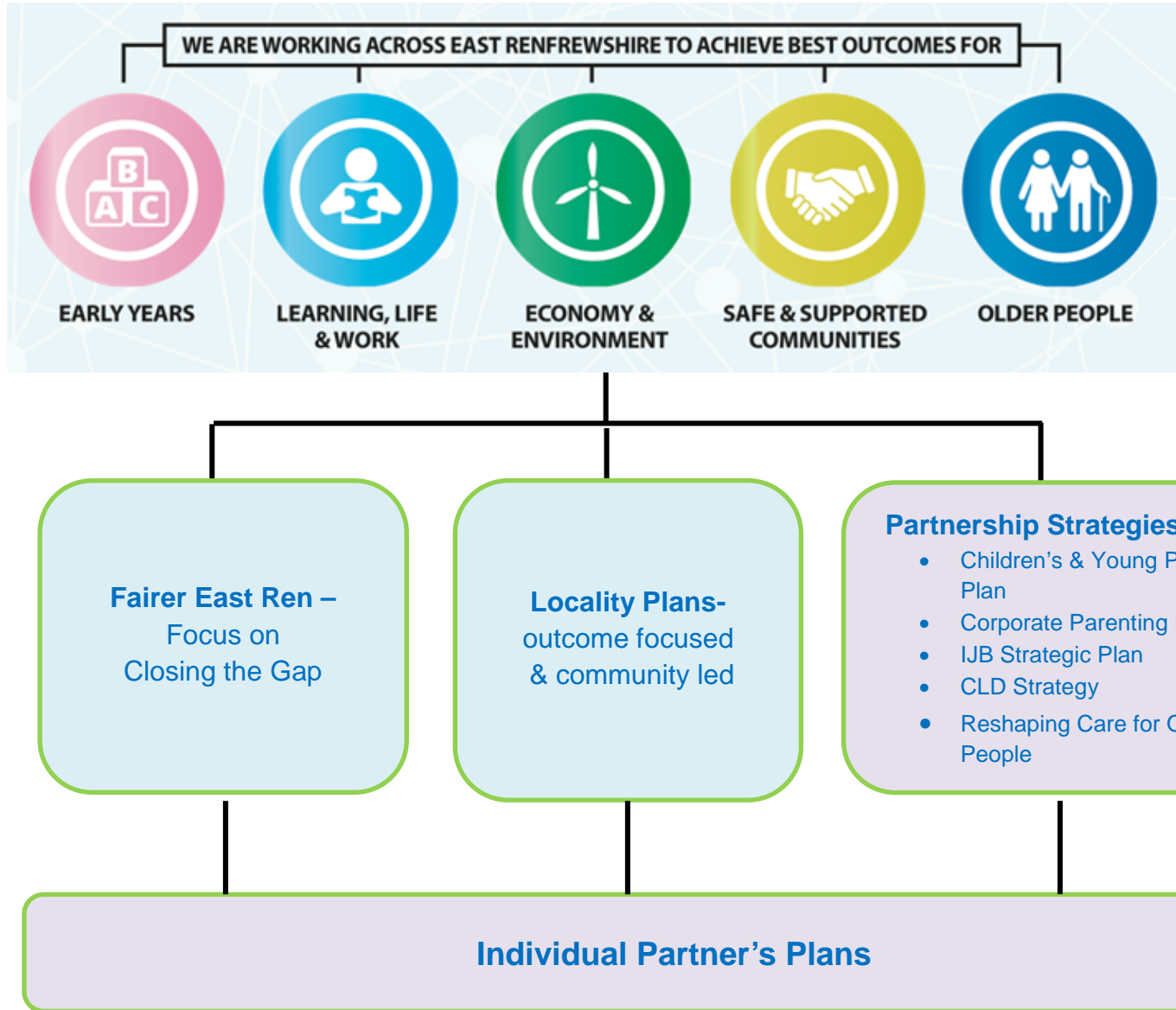
From 1 October 2017, East Renfrewshire CPP, and all CPPs across Scotland, must have in place two key types of plan to tackle inequalities that exist between different groups and communities. This is so that across Scotland inequalities are reduced and quality of life improved.

A **Local Outcomes Improvement Plan** will set out how outcomes will be improved and inequalities will be reduced in their area. These are inequalities that can be experienced by anyone in East Renfrewshire, regardless of which geographical community they live in. In East Renfrewshire, this plan will be known as **Fairer East Ren**.

Locality Plans are focused on tackling those inequalities that are concentrated within a specific geographical community, for example, high concentrations of unemployment, low income or poor health. At the moment, two locality plans are in development in the Barrhead area

The diagram overleaf shows how the Fairer East Ren and locality plans will work alongside other plans and strategies to deliver outcomes in East Renfrewshire.

East Renfrewshire Community Plan



Fairer East Ren

The Fairer East Ren Plan is our local name for the Local Outcomes Improvement Plan. It aims to make our area fairer, with fewer inequalities, and is initially based around four key themes, identified through engagement with our communities:

- **Reducing the impact of Child Poverty** – Residents are supported to minimise the impact of poverty, particularly on children.
- **Improved employability** – Residents are supported to access good quality, stable employment
- **Improving mental health and wellbeing** – positive mental health is supported to enhance residents' wellbeing and quality of life.
- **Reducing social isolation, loneliness and increasing safety** - Residents feel socially connected, included and safe.

These will be addressed alongside two cross cutting themes

- **Moving around** – ensuring all East Renfrewshire residents are able to have equal access to local services, leisure activities and employment
- **Community influence and sense of control** – our communities have the ability to affect decisions about their lives.

Each of the themes are issues that can have a greater effect on vulnerable people, and have a significant impact on their quality of life, regardless of which the geographical communities in East Renfrewshire that they live in.

To identify these themes, the CPP reviewed statistical evidence to identify the challenges and inequalities local people face and gathered the views of over 2,200 residents of East Renfrewshire – through surveys, conversations, local events and small discussion groups – to find out what is important to them. We also considered issues and priorities highlighted through national research and strategies (such as loneliness and mental health).

A wide range of community planning partners, including public service providers and voluntary sector organisations have contributed to the development of Fairer East Ren.

Our Population

The population structure of an area determines the services required such as education, leisure, health and social care.

East Renfrewshire has a higher rate of children and young people, a lower rate of working age residents and a higher rate of elderly residents compared to Scotland.



19.9% aged
0-15

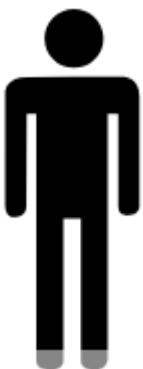


60.5% aged
16-64



19.6% aged
65 and over

The number of our children, young people and elderly residents will rise over the next 25 years.



Minority ethnic residents make up **5.9%** of our population. This compares to 4.0% across Scotland.

2.5% of our ethnic minority residents live in the 'most deprived' communities. This compares with 6.7% of all East Renfrewshire residents.

¹ Further socio-economic data and Fairer East Ren engagement results can be found in the [technical annex](#).

122 Child Poverty and Early Years

Our child poverty rate is almost half the Scottish average,
However around **1 in 10** children aged 0-19 are living in poverty
That's 1,885 East Renfrewshire children and young people.



Around 53% of these children are from the Lavern Valley area
whilst 47% are from the Eastwood side of the authority.

70% of children in Scotland living in poverty
live in households with at least one adult in employment.



Barrhead also has higher rates
of expectant mothers smoking
during their pregnancy.



Barrhead and **Neilston** have lower rates
of breastfeeding amongst new born
children than across Scotland on
average.

Income and Employment

While employment remains the best route out of poverty, it is not always a protection against poverty.



6,000 people working in East Renfrewshire earn less than the living wage.



5,600 people are income deprived with almost a 50/50 split between the Levern Valley and Eastwood areas.

Around 3,700 are unemployed or underemployed (not having enough paid work or not doing work that makes full use of skills and abilities).

77.4% of the working age population (aged 16-64) are in employment.



53.6% of working age disabled people are in employment – that's a 23.8 percentage point gap between disabled and non-disabled residents



Around 200 young people (aged 16-24) claim Jobseekers Allowance each month.

Barrhead has a higher rate of working age benefit claimants and a higher rate of people age 60+ claiming Disability Living Allowance compared to the Scottish average.

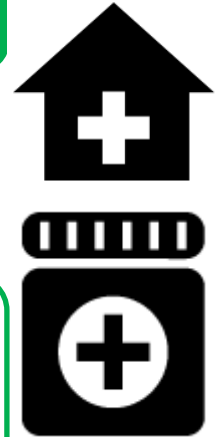


Mental Health and Wellbeing

14,000 residents (15%) have been prescribed medication for anxiety and depression to some extent.

295 residents were admitted to hospital in 2015/16 due to a mental health related issue.

Around 30% of young people report that they experienced low mood half or most of the time in the last year.



Social Isolation and Loneliness

Almost 1 in 10 residents said they don't have people in their community that they can rely on or turn to for support.

Around half of single adults living alone in East Renfrewshire are aged 65+.

Over the next 25 years the number of older people living alone is projected to increase by 50%.



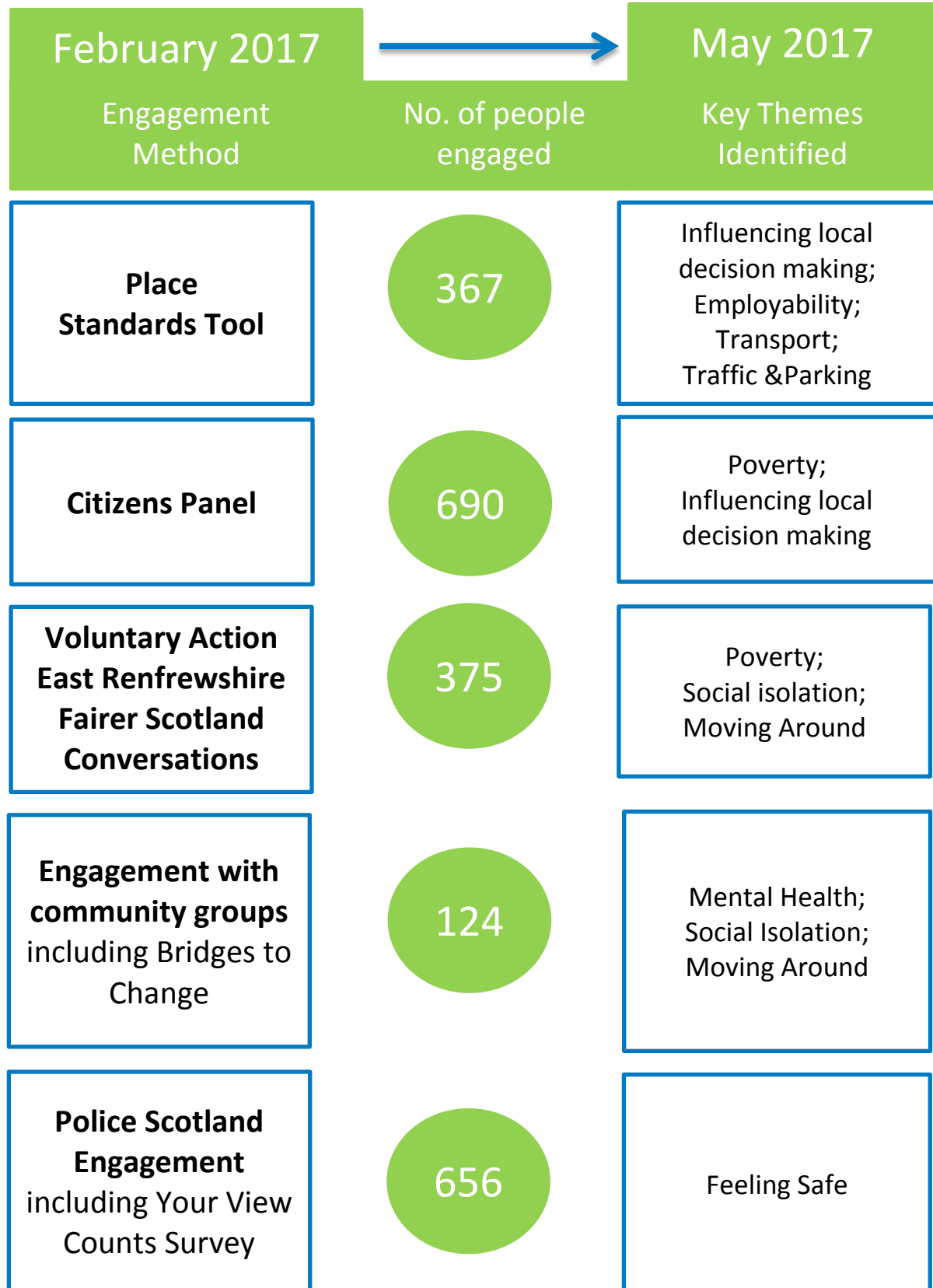
There are around 850 community groups in East Renfrewshire, whilst many of these are open to all; around 5% of these groups specifically cater for older people.



There are 1,800 people in East Renfrewshire living with dementia.

Fairer East Ren: community involvement and influence to date

East Renfrewshire’s CPP engaged with over 2,200 people between January and May 2017



Our Strategic Approach

Fairer East Ren sets out the priority areas for action for East Renfrewshire Community Planning Partnership. As set out on pages 5 to 9 of this plan, these priorities have been identified through a wide ranging engagement with communities across East Renfrewshire and based on a solid understanding of the socio-economic data for East Renfrewshire.

Community planning partners have considered the range of data and community views and developed outcomes - what we are trying to achieve - and contributions - what we will do to tackle each priority theme. During Year 1 of the Fairer East Ren we will work together to identify and carry out the actions partners will take to achieve these outcomes and how we will measure progress towards them.

Our ambitious approach to addressing our priorities is aimed at tackling inequalities and ‘closing the gap’ across East Renfrewshire. We will ensure that we make effective use of resources and work collaboratively to deliver on commitments while managing the significant challenge of increasingly complex local service demands against a backdrop of decreasing public sector funding.

Each of our priorities is linked to the strategic outcomes in East Renfrewshire’s Community Plan. Our priority themes also match against Scotland’s national outcomes, as demonstrated in the table below:

Fairer East Ren Priority	National Outcome
Reducing the impact of Child Poverty	We have tackled the significant inequalities in Scottish society.
Promoting employability	We realise our full economic potential with more and better employment opportunities for our people.
Improving positive mental health and wellbeing	We live longer, healthier lives.
Reducing social isolation, loneliness and increasing safety	Our people are able to maintain their independence as they get older and are able to access appropriate support when they need it.
Moving around	We live in well-designed, sustainable places where we are able to access the amenities and services we need.
Influence and sense of control	Our public services are high quality, continually improving, efficient and responsive to local people's needs.
The following national outcomes are present across all our priorities	
We have strong, resilient and supportive communities where people take responsibility for their own actions and how they affect others.	
We have improved the life chances for children, young people and families at risk.	

Reducing the impact of Child Poverty

Tackling child poverty will be at the core of Fairer East Ren’s focus to minimise inequalities of outcomes across East Renfrewshire. During our engagement we found residents had concerns about the use of foodbanks, the levels of child poverty across East Renfrewshire and the impact of welfare reform. Suggested solutions included affordable childcare, supporting individuals to switch tariffs to address fuel poverty and tackling poverty-related stigma. 86% of respondents to our online survey agreed that tackling poverty should be a priority theme?

Whilst East Renfrewshire Council has some of the lowest levels of child poverty in Scotland, we have seen an increase of 200 children (+12%) in poverty since 2012. Approximately 2000 children in East Renfrewshire living in poverty, roughly a quarter (500) of these children live in the 20% most deprived areas, meaning that whilst there is a geographical element to Child Poverty in East Renfrewshire, it exists across the authority. The impact of welfare reform has been a key driver and we will take a preventative approach in advance of change particularly to in-work families. Our work to tackle poverty is in line with the Scottish Government’s Fairer Scotland Action Plan. The Scottish Parliament is currently considering a Child Poverty Bill, setting out a range of targets and duties for local authorities, Fairer East Ren will form the basis of East Renfrewshire’s response.

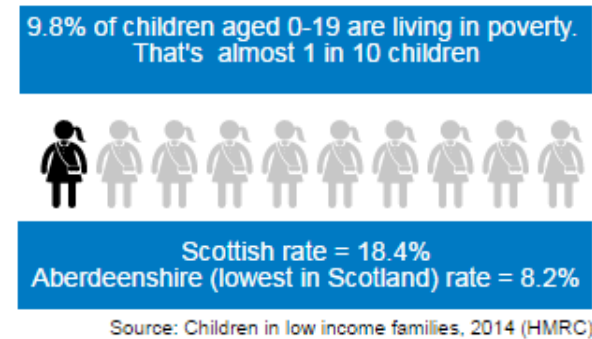
Key facts and figures



Around 7% of East Renfrewshire’s population is classed as income deprived according to SIMD 2016. This is based on a range of data such as the number of people claiming Income Based Employment and Support Allowance; Jobseekers Allowance Claimants; Universal Credit claimants and Tax Credits data.



6,000 people or roughly 10% of East Renfrewshire’s working age population earn less than the Living Wage of £8.25 per hour. Although the Living Wage was set at £8.25 per hour at the time of this Scottish Government analysis, the Living Wage has since increased to £8.45 per hour, potentially pushing more people below the threshold.



1,885 children and young people under the age of 20 live in low income families whereby the family is in receipt of Working Tax Credits, Child Tax Credits or Income-Based Jobseekers Allowance and their household income is also less than £228 per week before housing costs (60% of the median UK income).

The outcome we want is...

The impact of child poverty across East Renfrewshire is reduced particularly in our most disadvantaged areas.

Our contribution
So what we need to achieve is...

All families can afford childcare and can meet the costs of attending school

Fewer families experience in-work poverty

Children affected by poverty have attainment and achievement raised

Residents are supported through early intervention to maximise their incomes

Communities have the support they need to reduce the impact of poverty on the health and wellbeing of local people

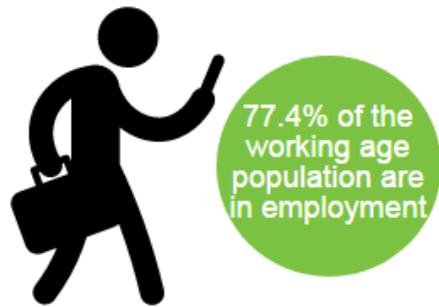
The impact on poverty is considered in the planning and delivery of services

Improved employability

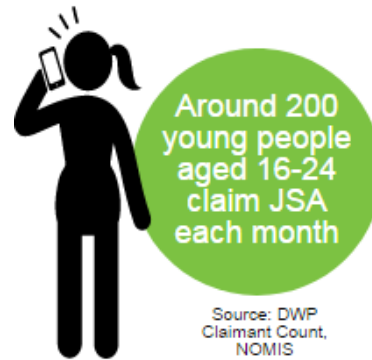
During our engagement residents and communities highlighted they felt there were few opportunities for work locally, particularly in the Levern Valley. Communities highlighted increasing support for those people from ethnic minority backgrounds or with a disability or with poor mental health as possible solutions.

Through the Glasgow Region City Deal over £1.13 billion is being invested in East Renfrewshire, Glasgow & the Clyde Valley, which will deliver of a range of improved transport links and support for local business. However we recognise those furthest from the labour market may require additional support. Our approach to employability is based on the East Renfrewshire Employability strategy, and is linked closely with our priority theme of tackling poverty and supporting positive mental health and wellbeing.

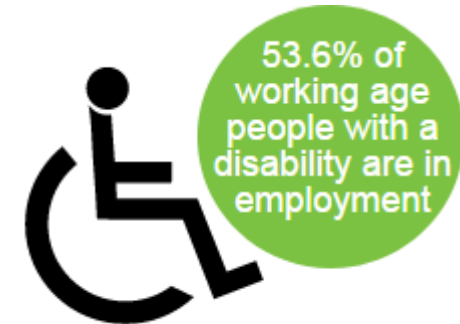
Key facts and figures



Source: Annual Population Survey, 2016



Source: DWP Claimant Count, NOMIS



Source: Annual Population Survey, 2016

According to the SIMD 2016, around 3,700 people in East Renfrewshire are employment deprived. This is based on long term unemployment claimant count numbers, Employment Support Allowance claimants and Working Age Severe Disablement Allowance recipients.

96.6% of East Renfrewshire's school leavers were in positive destinations in 2015/16 – a higher rate than the Scottish average. However, around 2% of East Renfrewshire's young people (16-24 year olds) claim Jobseekers Allowance each month.

There is a 23.8 percentage point gap between working age disabled and non-disabled residents living in East Renfrewshire who are in employment. There are a range of barriers that may prevent people from entering employment such as physical disabilities, additional support needs and mental health issues.

The outcome we want is....

All residents of East Renfrewshire have the right skills and confidence to secure high quality work and progress in their careers.

Our contribution
So what we need to achieve is...

Targeted and personalised services for residents who face barriers to employment (including additional support needs, physical disabilities and mental health issues)

An increased variety and type of jobs with improved awareness of the range of opportunities available

Fewer gaps in employability provision provided by partners

A range of early employability interventions in schools for children and young people

Local businesses grow and increase employment opportunities

Improving positive mental health and wellbeing

Reporting poor mental health is a vital step on the journey to recovery. We want to avoid using measures or creating incentives that may encourage services to under report mental health problems or discourage the uptake of vital services. We do want people to access support and feel better on their own terms.

Throughout our engagement residents and communities highlighted concerns about young people’s mental health and wellbeing, and how to access key support services. Focusing services on prevention/early intervention, creating specialist employability support and increasing mental health awareness in schools were some of the solutions suggested by communities.

Our approach to improving positive mental health and wellbeing follows the principles set out in the Scottish Government’s Mental Health Strategy 2017-2027: prevention and early intervention; access to treatment, and joined up accessible services; the physical wellbeing of people with mental health problems; and rights, information use, and planning.

There are strong links between our approach to improving mental health and reducing social isolation and loneliness, and there will be some areas of crossover in how we address these priorities.

Key facts and figures



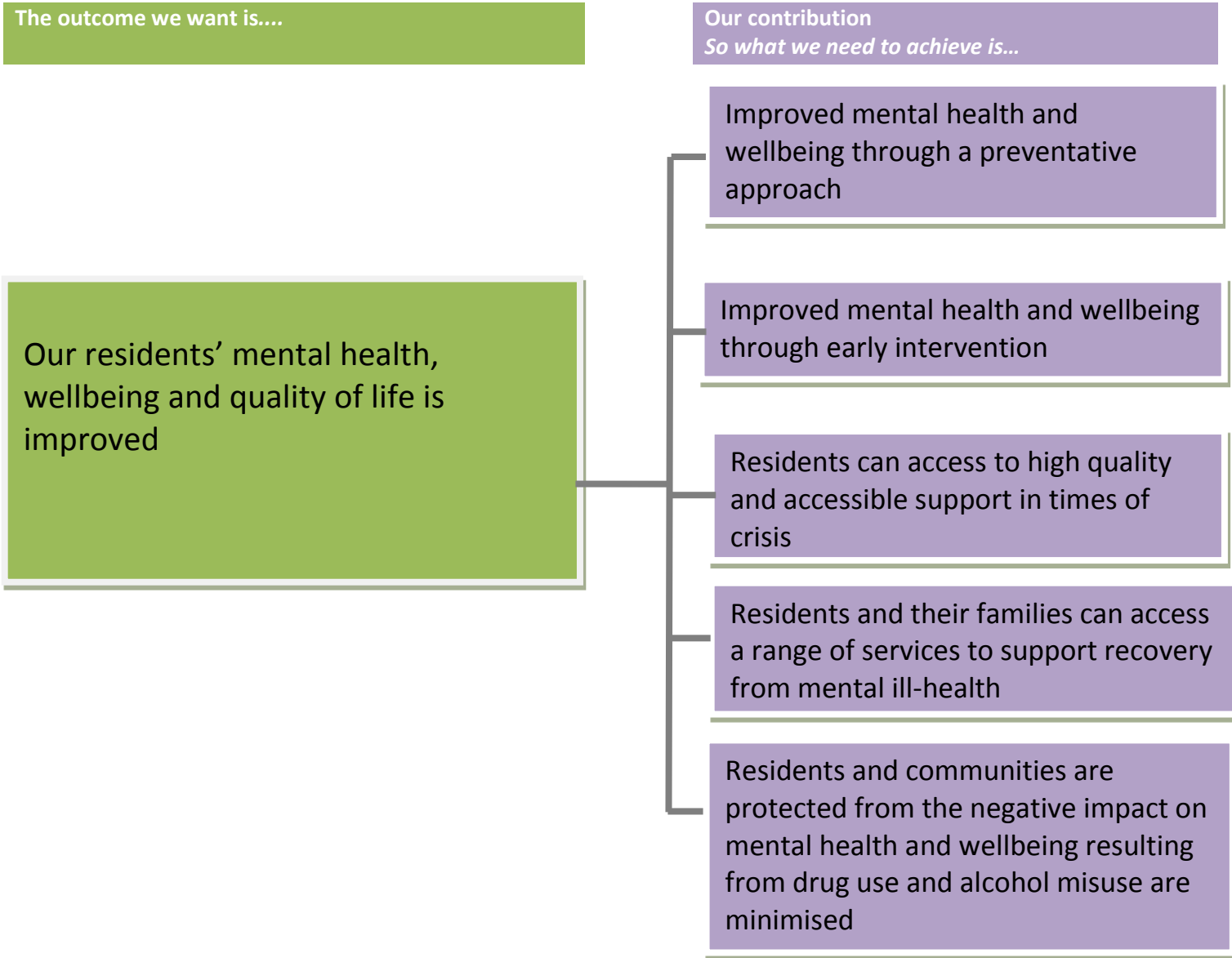
Source: SIMD 2016

According to the SIMD 2016 statistics, this equates to 15% of East Renfrewshire’s total population. However, this measure does not detail the length of time people are prescribed this medication nor the dosage taken. This is purely the amount of prescriptions given in a year.



Source: ISD Scotland, 2017

East Renfrewshire’s mental health related hospital admissions in 2015/16 translates as 3.1 admissions per 1,000 residents. This is the highest rate East Renfrewshire has experienced in a decade.

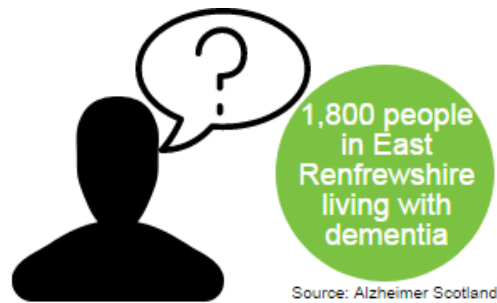


Reducing social isolation and loneliness and increasing safety

During our engagement, residents repeatedly highlighted the benefits and stressed the importance of a strong sense of community, social connections and feeling safe. We understand the damaging impact of loneliness and social isolation, not only on the individual affected, but the wider impact on our communities.

The effect of social isolation and loneliness on older people, carers and those from minority ethnic communities were key messages from our community engagement, with many highlighting a lack of community spirit as an important factor. Suggested solutions included tackling the travel affordability issues, increasing social opportunities for older people and improved information about existing groups and activities in the community.

Key fact and figures



Around two thirds of people living with Dementia in East Renfrewshire are females.



According to the latest Citizens Panel results, an estimated 14% of households don't have access to a car or van. These residents will rely on public transport to get around, both within and outwith the authority.



Of the 850 community groups operating in East Renfrewshire, around 5% of these groups specifically cater for older people, although there are a range of other groups they can get involved in.

Groups held on the database range from sports clubs to religious groups to uniformed organisations such as Brownies as well as early year's groups such as parent & infant support groups.

The outcome we want is...

Residents are safe and are more socially connected within their communities

Our contribution
So what we need to achieve is...

Communities use the information, skills and resources they have to reduce isolation.

Residents have opportunities to engage in meaningful activities

Residents experience fewer barriers to getting involved in community life

People most at risk of isolation can re-connect with their communities

Communities feel safe and the impact of antisocial behaviour, disorder and violent crime is reduced

Our cross cutting themes

In addition to the four outcomes set out above, two cross cutting themes were identified during our engagement: Moving around and Community influence & Sense of control.

When we engaged our residents and communities they highlighted difficulties in accessing key local amenities and services through public transport and highlighted areas such as accessibility and linkages as key priorities for improvements.

During our engagement residents expressed that they felt they had limited control or influence over key decisions about their communities. Our extensive engagement undertaken to develop Fairer East Ren is aimed at tackling this perception.

As we begin to deliver against our priorities we will ensure that Delivery Plans reflect the importance of our cross cutting themes.

Delivering a Fairer East Ren

Fairer East Ren sits below East Renfrewshire CPP's Community Plan which sets out our wider ambitions for the area.

Fairer East Ren will evolve during its first year, adapting to further community engagement and emerging partner priorities.

East Renfrewshire Community Planning Partnership will set out how we will deliver against the outcomes in the plan and how we will measure our progress towards them. Our Performance and Accountability Review group will have responsibility for determining detailed delivery mechanisms, including allocating outcome leads and overseeing the establishment of thematic groups whilst retaining responsibility for reviewing our progress towards a Fairer East Ren.

As we develop our delivery mechanisms for Fairer East Ren we will create a framework for working together with community groups and organisations who want to contribute to the plan. We held two successful events in early September 2017 which brought together partner, third sector organisations and community groups to have an initial discussion about this framework.

Contact for further information

Community Planning Team
Council Headquarters, Eastwood Park
Rouken Glen Road
Giffnock, G46 6UG
0141 5773499
listening@eastrenfrewshire.gov.uk

Auchenback

Locality Plan

2017-2027

Contents

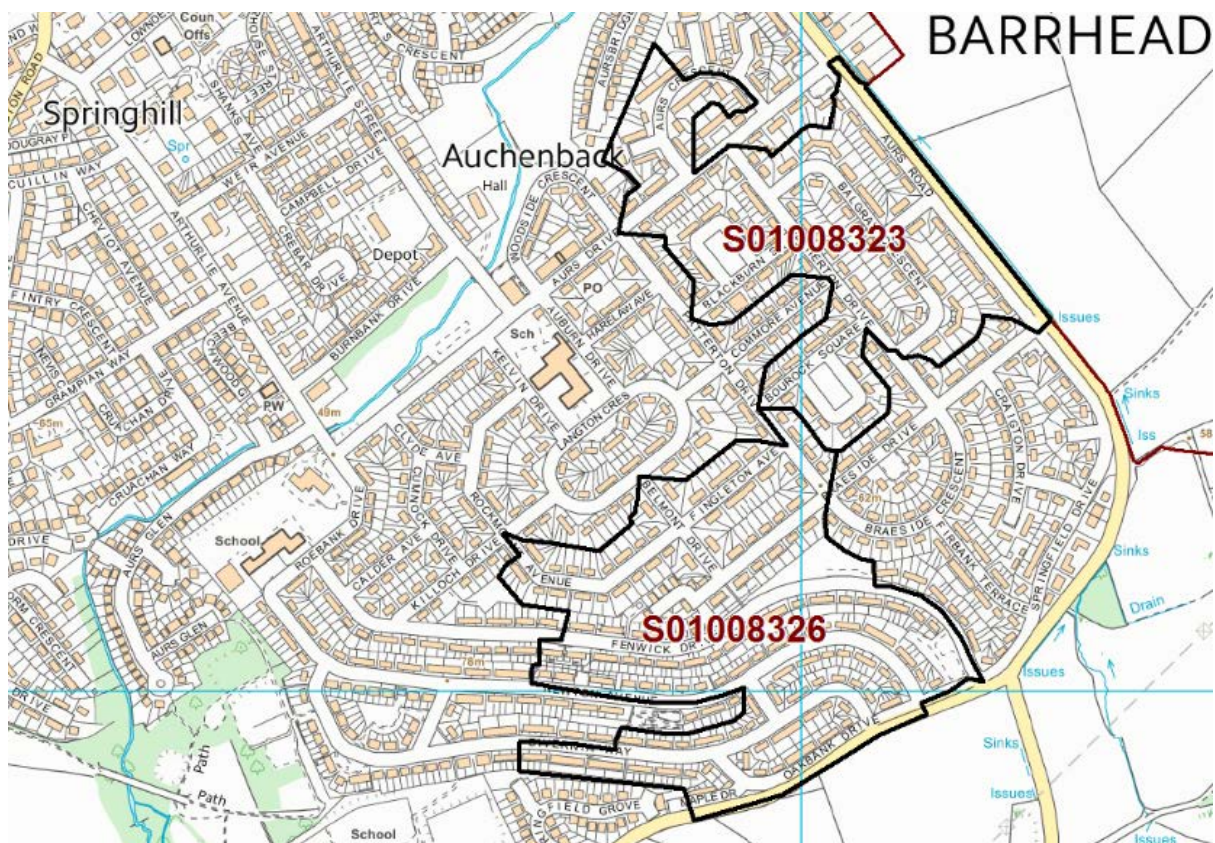
1. Introduction
2. Local socio-economic context
3. Community involvement
4. Community priorities
5. Proposed community outcomes
6. Next Steps and delivering the plan

Introduction

The Community Empowerment (Scotland) Act 2015 is about communities having more of a say in the services that affect them. All 32 Community Planning Partnerships across Scotland have a legal duty to produce 2 key plans to tackle inequality within their area.

1. The **Fairer East Ren Plan** will set out how outcomes will be improved and inequalities will be reduced in the area. These are inequalities that can be experienced by anyone in East Renfrewshire, regardless of which geographical area they live in.
2. **Locality Plans** are focused on tackling those inequalities that are concentrated within a specific geographical community. Currently there are two locality plans in development in the Barrhead area.

The Community Planning Partnership used the Scottish Index of Multiple Deprivation (SIMD) to identify two data zone areas in Auchenback as priority areas for locality planning.



(c) Crown Copyright 100023382 2017

This plan is the result of a community-focused and community-led process of identifying needs and priorities as well as taking account of the socio-economic evidence for the area and previous engagement work carried out in the area. An Auchenback locality plan steering group, involving some local residents who have never engaged before, has been supported by East Renfrewshire Community Planning Partnership to engage the community more widely and influence the development of the plan.

Auchenback's Population

4,100 people live in the Auchenback area.



23.7% aged 0-15



63.3% aged 16-64



13.0% aged 65 and over

1,800 people live in the 'most deprived' areas of Auchenback.

Children and Young People

Around 1 in 5 children and young people aged 0-19 in Auchenback are living in poverty.



Teenage pregnancy rates in the area are more than double the East Renfrewshire average.



Auchenback has lower breastfeeding rates than both East Renfrewshire and Scotland.



Auchenback has higher rates of expectant mothers smoking during pregnancy than

Income and Employment

While employment remains the best route out of poverty,
it is not always a protection against poverty.



Around 1 in 5
Auchenback residents
are income deprived.



Around one fifth of working
age residents are unemployed
or underemployed.



More than a quarter of residents
aged between 16 and 64 have
no formal qualifications.

Wellbeing and Safety



Almost a quarter of
residents are being
prescribed medication
for anxiety and
depression.



The area has higher
crime rates than
the rest of the
authority.



There are around 200 different
community groups operating
across the wider Barrhead area.

Community Participation and Engagement

Our approach to developing Auchenback's Locality Plan was built around its unique circumstance.

Analysis of previous engagement reports

Over the past three years there has been a wealth of engagement with residents in Auchenback, including consultation on:

- the Early Years collaborative
- Living Streets
- Green Space Strategy
- Fairer Scotland conversation
- Barrhead South Masterplan
- Barrhead Green Network Place making

The findings of these of these consultations were analysed independently to identify the key priorities for the community.

Forming of the steering group

The locality planning process in Auchenback has engaged community members who previously have never engaged or given their views about their local area. Over 900 residents within the Auchenback area have had the opportunity to give their views. Volunteer hours for the process equates to over 130 hours.

Auchenback formed its steering group from members of the community council and members of other local groups, which included members of the Auchenback Resource Centre (ARC) board (local community centre and focal point for the community), as well as individuals from the community. The steering group, comprised of 8 members and a further 4 active volunteers, including a number of residents who have never engaged before.

Wider engagement

The steering group are building skills and knowledge within the community through planning and delivering community engagement events and are getting to know their community better through identifying and understanding the issues that are important to the people who live there.

Local people helped shape the Auchenback Locality Plan

Auchenback steering group took views from 997 Auchenback residents

January 2017

July 2017



Engagement Method

No. of people engaged

Key Themes Identified throughout our engagement

Analysis of previous engagement reports

350+

Health & Wellbeing

Community Safety

Place Standard Tool

Engagement with older people & young people

514

Environment

Social Interaction

Financial inclusion

Feedback / Voting events

94

Public Transport

Shop Fronts

Place Standard Tool
Individual community members

39

Housing

Specific Community Projects are already emerging and being taken forward

Engagement work has improved links between the Auchenback Resource Centre and St Marks

- Morning and afternoon teas were held in St Marks to engage parents around the findings of the engagement analysis – 35 completely new engagements
- Views gathered from parents, grandparents staff within the school (who live in the area) and pupils from P7
- This has developed links between the community centre and the school. Volunteers from the Auchenback Resource Centre Board proposing to deliver a homework club within the school.

Two new community groups are working to deliver projects which will improve play and tackle social isolation

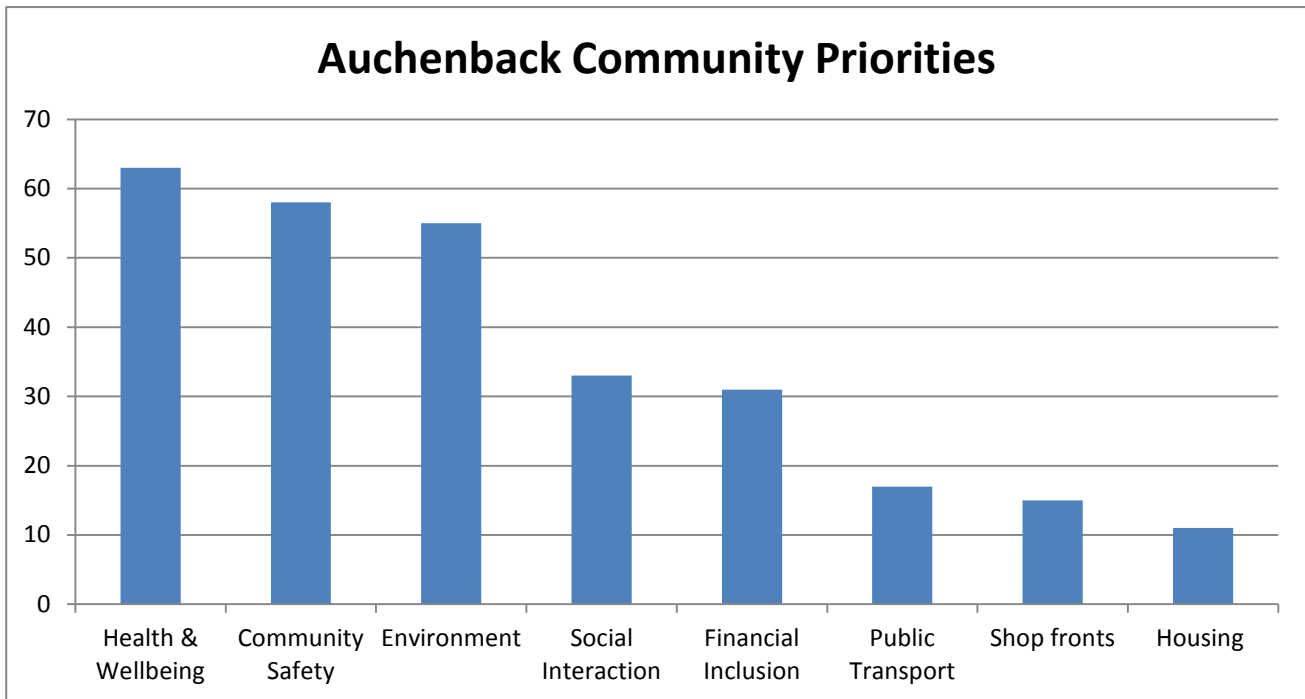
- Community Cinema offers an invaluable service that will bring people together, and creates a social and local experience which won't cost the earth. **17 New volunteers recruited to take this piece of work forward.**
- Soft play - Play is the primary way that children are able to learn and it fuels the healthy development of young children. Research has shown that children who are regularly active in play develop well on many levels including physical, emotional, mental and social.

By taking a participatory approach to the Auchenback Locality Plan we have started from where people are at. In doing so we are able to build relationships and networks within the community and we can begin to see a community structure forming. The members of the steering group and the volunteers are taking ownership of their neighbourhood and their community, through this process they are identifying with the wider community what they want to see developed within their local area to make it a better place to live. This approach allows us to build community from the bottom up and creates an informed community which is developing local influencing structures which ultimately will assist with the development of an interface between the community and services/public agencies.

Community Priorities

Community Priorities

Our voting events took place at St Mark's Primary School and Auchenback resource centre in June 2017. There were 283 votes



Further details of community aspiration under each heading can be found below:

Emerging Theme	Priorities
Health & Wellbeing	<ul style="list-style-type: none"> • More and better opportunities for Play • Improved allotment space and support for health eating and cooking • Smoking Cessation • Access to improved Green Spaces • Increased access to and awareness of podiatry services
Community Safety	<ul style="list-style-type: none"> • Measures calm traffic Calming and improve Parking • Better Lighting in street and parks • Increase Visual Presence of Police & Community Wardens • Action to tackle Dog Fouling • Safer equipment in local parks
Environment	<ul style="list-style-type: none"> • Action to tackle Litter • Action to tackle vandalism in parks and of shop shutters • Pathway improvements • Making use of empty garage space • Improve waste and cleaning services • Access to improved Green Spaces • Supporting traders in upkeep of shop fronts

Financial Inclusion and Employability	<ul style="list-style-type: none"> • Employability Support • Support for welfare reform and information on financial support services
Public Transport	<ul style="list-style-type: none"> • Improved Public Transport (frequency, availability and affordability)
Older People	<ul style="list-style-type: none"> • Support for Older People relating to benefits, employability, health and well being
Other	<ul style="list-style-type: none"> • Improved Social Interaction through clubs, and events • Greater influence and sense of control through development of street representatives system • Increased opportunities for young people

Proposed community outcomes**1. Young People**

- Young people in Auchenback have improved their life, learning and work.

2. Health and Wellbeing

- Residents of Auchenback live healthy lives
- Families of Auchenback have access to spaces and facilities to stay active and encourage play
- Residents of Auchenback have a healthy diet based on locally grown produce.

3. Financial Inclusion and Employability

- Residents in Auchenback have the right skills and confidence to secure good work and progress in their careers
- The incomes of residents in Auchenback are maximised

4. Environment

- Auchenback is a clean, accessible and inviting place to live, work and visit
- Unused space in Auchenback is brought back into community use.

5. Public Transport

- Public Transport meets the needs of residents of Auchenback

6. Community Safety

- Residents of Auchenback feel safe in their community
- Traffic, parking and pathways in Auchenback allow residents to move around safely and meets community needs

7. Community Life

- Auchenback has a thriving community life which is rich in social capital
- Residents of Auchenback influence the decisions that affect their community.

8. Older People

- Older People in Auchenback live full and active lives

Next Steps and delivering the plan

Auchenback's Locality Plan sits below East Renfrewshire CPP's Community Plan which sets out our wider ambitions for the area and Fairer East Ren, which has a particular focus on tackling inequalities.

Auchenback's Locality Plan and proposed outcomes will evolve during its first year, adapting to further community engagement and emerging partner priorities.

We will work with and support the Auchenback Steering group to oversee the delivery of plan and continue to build the community ownership and participation around locality planning.

East Renfrewshire Community Planning Partnership will set out how we will deliver against the outcomes in the plan. Our Performance and Accountability Review group will have responsibility for determining detailed delivery mechanisms whilst retaining responsibility for reviewing our progress towards the agreed outcomes within Auchenback's Locality Plan.

Measuring Performance

Our key measures of performance set out below have three and one year targets. Progress against these indicators will be monitored by the CPP's Performance and Accountability Review and reported to the Community Planning Partnership Board annually, to ensure we are continuously improving our performance.

Auchenback Locality Plan



Around 1/5th of residents are income deprived

1 in 6 households are overcrowded



Around one quarter of residents prescribed medication for mental health issues

Higher than average proportion of people with health conditions or disabilities



A mapping assessment identified a shortage of parent & toddler groups

Crime rates are higher in Auchenback than across East Ren



Around a one fifth of residents are unemployed or underemployed

Local Priorities Identified

Increased Financial Inclusion

Increase community involvement

Improved pavements and roads

Improved Employability

Improved Health and Wellbeing

Improve local transport

Feeling safe

Increase investment in the Auchenback area

More groups for younger people

Support for older people

BLANK PAGE

ADD2Barrhead

Locality Plan

2017 - 2027

Contents

1. Introduction
2. Facts about ADD2Barrhead
3. Community Involvement in ADD2Barrhead
4. Community priorities
5. Proposed community outcomes
6. Next Steps and delivering the plan

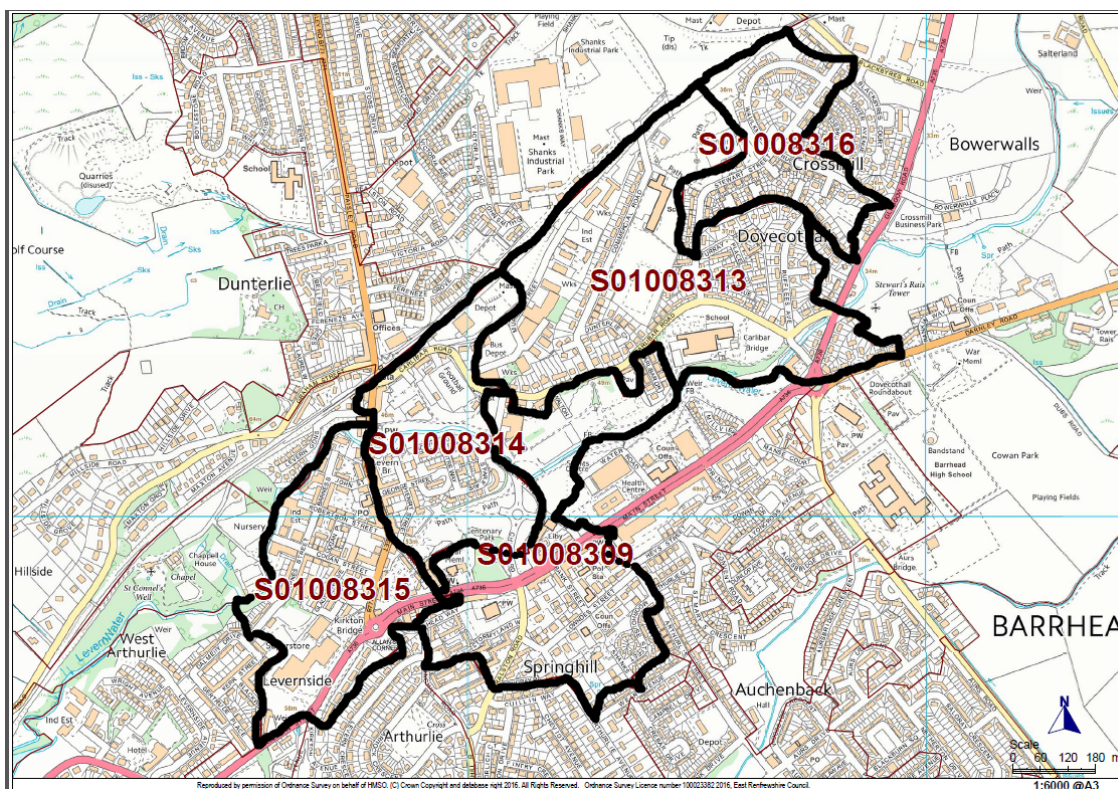
Introduction

The Community Empowerment (Scotland) Act 2015 is about communities having more of a say in the services that affect them. All 32 Community Planning Partnerships across Scotland have a legal duty to produce 2 key plans to tackle inequality within their area.

1. The **Fairer East Ren Plan** will set out how outcomes will be improved and inequalities will be reduced in the area. These are inequalities that can be experienced by anyone in East Renfrewshire, regardless of which geographical area they live in.
2. **Locality Plans** are focused on tackling those inequalities that are concentrated within a specific geographical community. Currently there are two locality plans in development in the Barrhead area.

The Community Planning Partnership used the Scottish Index of Multiple Deprivation (SIMD) to identify the following five data zone areas as priority areas for locality planning – these areas are collectively known as ADD2Barrhead.

- East Arthurlie
- Dunterlie
- Dovecotall
- Dalmeny
- Springhill



(c) Crown Copyright 100023382 2017

This plan is the result of a community-focused and community-led process of identifying needs and priorities as well as taking account of the socio-economic evidence for the area. An ADD2Barrhead steering group has been supported by East Renfrewshire's Community Planning Partnership to engage their community more widely and influence the development of the plan.

Vision of ADD2Barrhead

Add2Barrhead will work with partners and services to achieve a better quality of life creating a thriving place, and will strive to tackle issues that affect our community.

ADD2Barrhead Population

The population structure of an area determines the services required such as education, leisure, health and social care.

3,600 people live in the ADD2Barrhead area.



17.9% aged 0-15



65.8% aged 16-64



16.3% aged 65 and over

Children and Young People

Around 1 in 5 children and young people aged 0-19 live in an out of work household.



Teenage pregnancy rates in the area are almost three times higher than the East Renfrewshire average.



ADD2Barrhead has lower breastfeeding rates than both East Renfrewshire and Scotland.



ADD2Barrhead has higher rates of expectant mothers smoking during pregnancy than Scotland.

Income and Employment

While employment remains the best route out of poverty,
it is not always a protection against poverty.



More than a quarter of
ADD2Barrhead
residents are income
deprived.



Around a quarter of working
age residents are
unemployed or
underemployed.



More than one third of residents
aged between 16 and 64 have
no formal qualifications.

Wellbeing and Safety



Almost a quarter of
residents are being
prescribed medication
for anxiety and
depression.

The area has
higher crime rates
than the rest of
the authority.



There are around 200
different community groups
operating across the wider
Barrhead area.

Community Involvement in ADD2Barrhead

Barrhead has a high level of community involvement with an active community council. This was the starting point for building community involvement around the locality planning process and members from the community council formed the steering group along with other community members.

ADD2Barrhead is now a steering group of 12 local community members from Barrhead who have volunteered their own time to developing a 10 year locality plan and are committed to improving Barrhead as a place to live, work and visit. Over the past six months the steering group have logged over 400 volunteer hours.

The steering group has 44 volunteers on their contact list, some of whom are now interested in being involved with proposed work in Cowan Park; this shows that people are interested in being involved but when the subject matter is important to them

Local people shaping the ADD2Barrhead Plan ¹⁵⁸

ADD2Barrhead engaged with over 1244 residents

January 2017

September 2017

Engagement Method

No. of people engaged

Key outcomes identified throughout our engagement

Survey:

Household surveys

258

Investing in people and the physical environment

Improved accessibility

Community Events:

- Introduction event
- Voting event

130

Feeling Safe

Improving Greenspaces

Face to face:

- Place Standards Tool
- Barrhead High School
- Barrhead Community Council
- Grow10

856

Increased opportunities for young people

Community influence and sense of control

Community Priorities

Five priority theme areas were identified from the analysis of the household questionnaire and formed the basis of the June voting event. The following charts show the number of votes cast against each of the identified priorities.

Chart 1: Number of votes cast per outcome

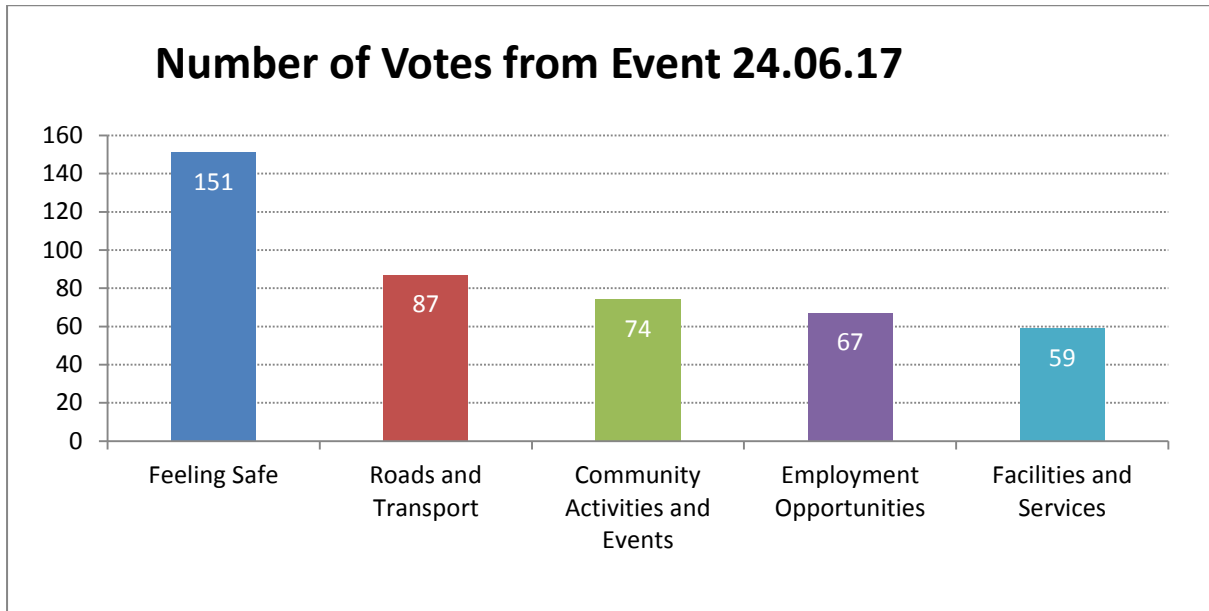
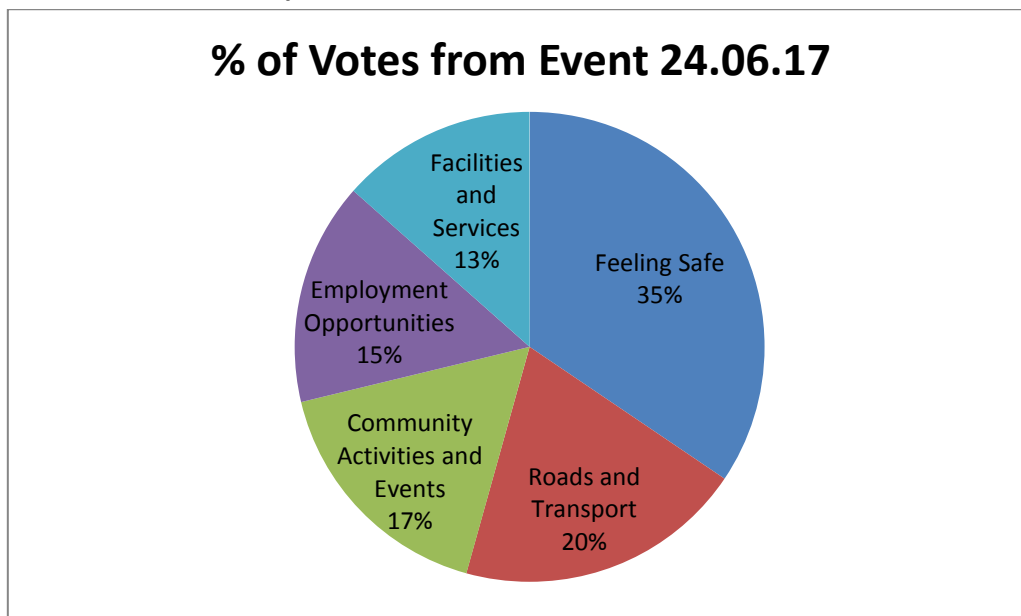


Chart 2: % share of votes cast per outcome



Feeling safe was voted the top priority for people, receiving 151 votes (35% of all votes cast), with issues around Main Street Barrhead being one of the main safety issues. Many survey responses highlighted feeling intimidated on Main Street and also recognise that one side of the street is in need of renovation.

Employment opportunities were highlighted as a particular issue around young people and people with additional support needs (ASN).

Further details of community aspirations can be found below:

1. Economy and Environment

The community voted for
<p><u>Increase Employment Opportunities</u></p> <ul style="list-style-type: none"> • More employment opportunities for local people • Incentives and support for local businesses to employ local people with ASN and/or other mental health issues • Commitment from employers to train young people towards positive destinations • Awareness raising for young people around job opportunities and experience
<p><u>Investment</u></p> <ul style="list-style-type: none"> • Incentives to fill vacant shop outlets • Encouragement of outdoor markets • Incentives for small business start up's • Investment in the larger area i.e. Kelburn Street • Promote Car Boots • Jack and Jill Markets
<p><u>Main Street</u></p> <ul style="list-style-type: none"> • Tackle dog fouling. • Clean up shop fronts in shopping precinct on Main Street. • Deal with the litter/fly tipping problem. Crack down on fly tipping issues. • Community Clean Up Initiatives. • Hanging baskets on Main Street empty. • More visible street cleaning.

2. Moving Around

The community voted for
<p><u>Improve Local Transport</u></p> <ul style="list-style-type: none"> • Better Transport Link e.g. Eastwood to Barrhead • Improved Time Tables
<p><u>Upgrade Cycle Paths</u></p> <ul style="list-style-type: none"> • Repair and create a new cycle path network
<p><u>Improved Pavements and Roads</u></p> <ul style="list-style-type: none"> • Upgrade and repair potholes on pavements and roads, ensuring low level access to pavements and paths for people with disabilities

Parking

- Addressing parking issues such as increasing off street parking, obstructions caused by poor parking

3. Feeling Safe

The community voted for

Feeling Safe

- Develop initiatives to address youth disorder outside the Foundry
- More visible police presence in communities
- Promote initiatives to address youth disorder i.e. Police Scotland Youth Volunteers
- Tackle intimidating behaviour on the Main Street

Upgrade Public Lighting

- Improved street lighting in and around public walkways and footpaths

Road Safety

- Better traffic calming measures in local communities

4. Housing and Greenspaces

The community voted for

Improved Community Facilities

- Cowan Park to be on the same standard as Rouken Glen/Glasgow Green
- Hire Park Attendants
- Upgrade of all public parks
- Develop non-sports areas in parks for families
- Development of green spaces

Housing

- Affordable housing fit for purpose
- Manage overgrown trees
- Landlords taking more
- control of maintenance and communal areas

5. Opportunities for young people and community influence.

The community voted for
<p><u>Young People</u></p> <ul style="list-style-type: none"> • Provide more activities for young people • Affordable activities for young people • Make use of more local accessible spaces encouraging young people to take ownership • Promoting of available services • Investment in Youth Engagement • More things for young people to do • More structured activities • Dedicated space • Spaces and place for young people to socialise
<p><u>Community Involvement</u></p> <ul style="list-style-type: none"> • Encourage more young people to get involved • More community events • Development of more community groups • Small targeted events e.g. painting and planting
<p><u>Increased Baby and Toddler Opportunities 0 – 5 years</u></p> <ul style="list-style-type: none"> • Set up of afternoon provision • Set up of Thursday provision • Supporting the set-up of a structured group i.e. messy play, arts and crafts based activities • Providing sustainable and progressive opportunities

Proposed community outcomes

1. Increased and targeted service delivery for young people
2. Add2Barrhead Community is a thriving locality as a result of investment in people and the physical environment.
3. Add2Barrhead Community is accessible as a result of reliable and well connected transport services, pathways and sustainable networks
4. Add2Barrhead Community members feel safer in their locality
5. Add2Barrhead Community has improved physical environments including greenspaces

Next Steps and delivering the plan

ADD2Barrhead's Locality Plan sits below East Renfrewshire CPP's Community Plan which sets out our wider ambitions for the area and Fairer East Ren, which has a particular focus on tackling inequalities.

ADD2Barrhead's Locality Plan and proposed outcomes will evolve during its first year, adapting to further community engagement and emerging partner priorities.

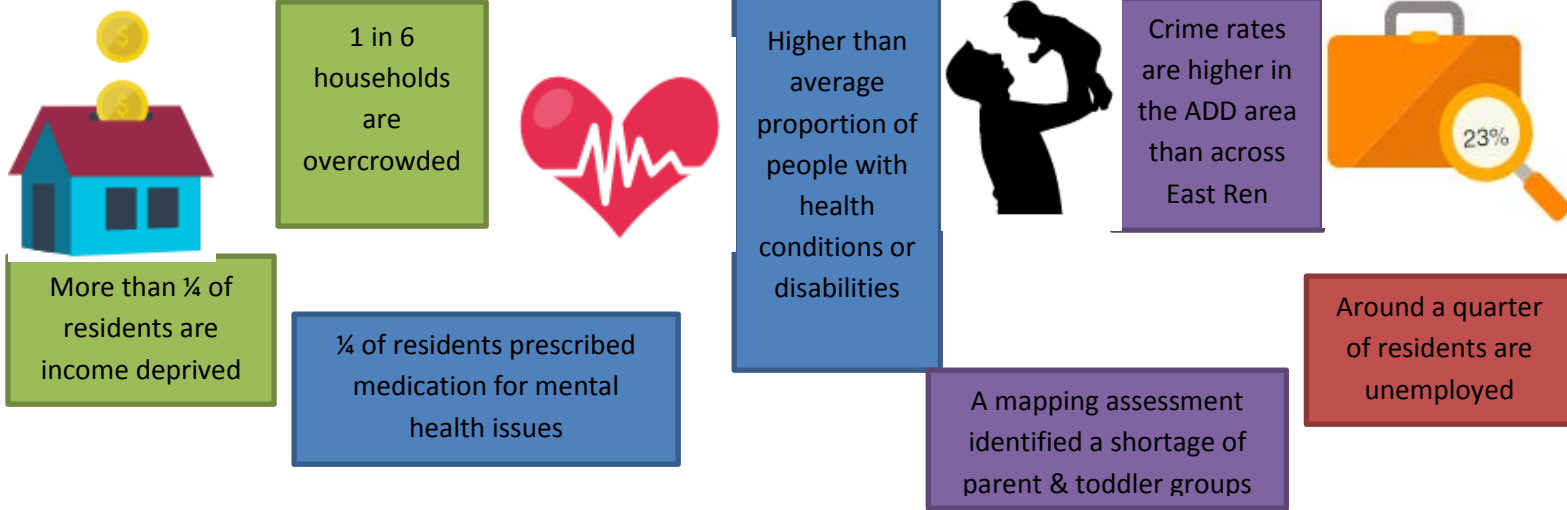
We will work with and support the ADD2Barrhead'Steering group to oversee the delivery of plan and continue to build the community ownership and participation around locality planning.

East Renfrewshire Community Planning Partnership will set out how we will deliver against the outcomes in the plan. Our Performance and Accountability Review group will have responsibility for determining detailed delivery mechanisms whilst retaining responsibility for reviewing our progress towards the agreed outcomes within ADD2Barrhead's Locality Plan.

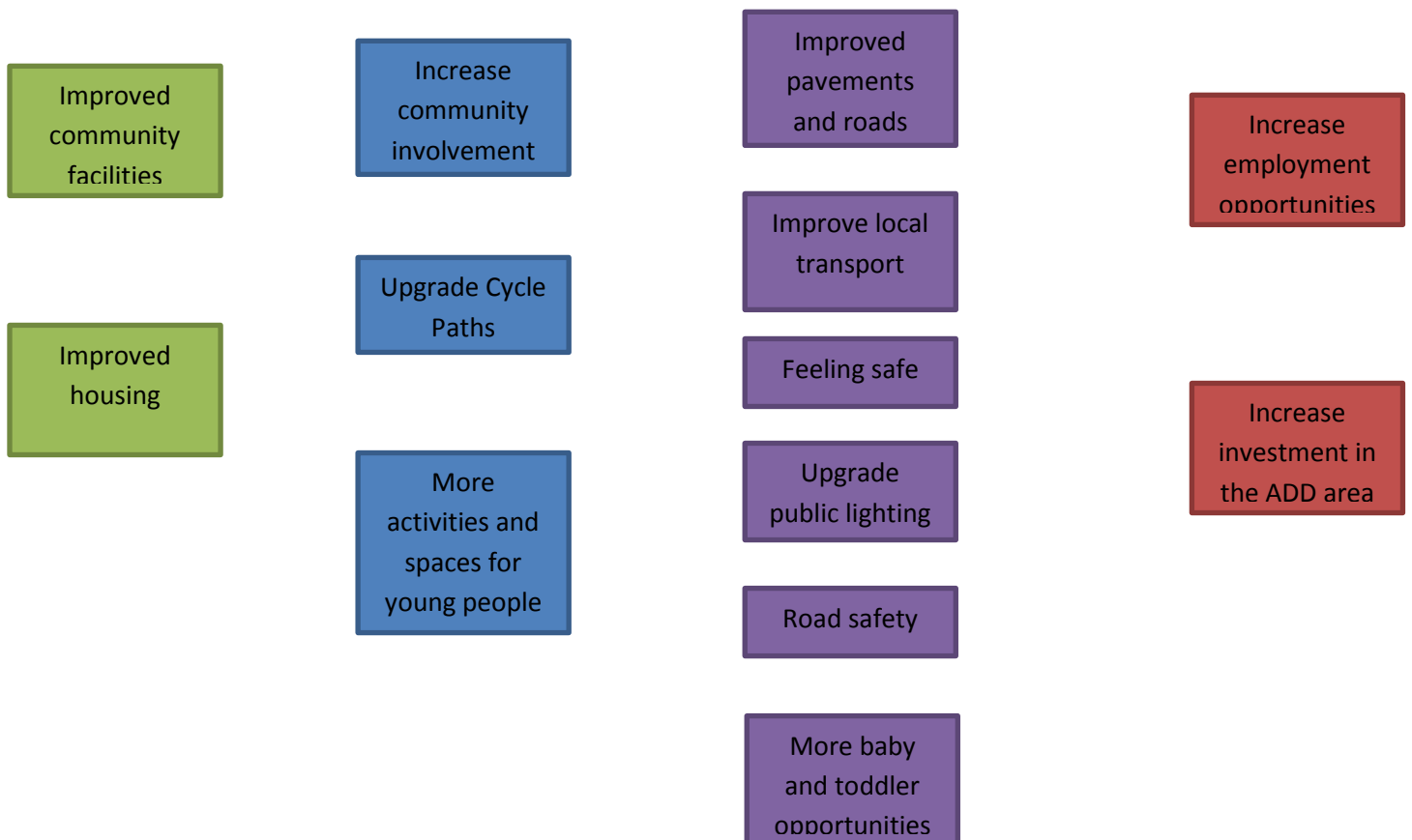
Measuring Performance

Our key measures of performance set out below have three and one year targets. Progress against these indicators will be monitored by the CPP's Performance and Accountability Review and reported to the Community Planning Partnership Board annually, to ensure we are continuously improving our performance.

ADD 2 Barrhead Locality Plan



Local Priorities Identified



BLANK PAGE