

EAST RENFREWSHIRE COUNCILEDUCATION COMMITTEEThursday 30 March 2017Report by Director of EducationCONSULTATION REPORT ON THE CONSULTATIVE PROPOSAL:
FUTURE NON-DENOMINATIONAL PRIMARY SCHOOL PROVISION IN NEWTON MEARN
SOUTH AND ESTABLISHMENT OF A NEW NON-DENOMINATIONAL PRIMARY SCHOOL
AND NURSERY CLASS AT MAIDENHILL: FROM SESSION 2019-20 AND BEYOND**PURPOSE OF REPORT**

1. To report on the results of the consultation exercise on the proposal about the future of non-denominational primary school provision in Newton Mearns south and the establishment of a new non-denominational primary school and nursery class at Maidenhill to take effect from school session 2019 – 2020 ; and ask elected members to approve the resulting recommendations.

RECOMMENDATIONS

2. It is recommended that the Education Committee adopts the proposal that effective from school session 2019-20 the Education Department:

- (a) establishes a new 2-stream non-denominational primary school and 120 FTE place nursery class in the Maidenhill development named Maidenhill Primary School and Nursery Class and in so doing undertakes design consultation and due planning process;
- (b) amends the current delineated catchment areas of Kirkhill and Mearns primary schools into three delineated catchment areas one for the new Maidenhill Primary, a revised one for Kirkhill Primary and a revised one for Mearns Primary as shown in *Appendix 6* of the attached Consultation Report. Children living in the newly defined catchment area for the new Maidenhill Primary, enrolled by the end of June 2019 and attending Kirkhill Primary or Mearns Primary would have the option of transferring to the new Maidenhill Primary or remaining where they are. Once the new Maidenhill Primary is open in August 2019, any new P1 registrations and pupils moving into its delineated catchment area would attend the new Maidenhill Primary for session 2019-20 onwards.
- (c) associates the new Maidenhill Primary with Mearns Castle High School for secondary education in addition to the existing four primary schools, namely Calderwood Lodge, Eaglesham, Kirkhill and part of Mearns Primary delineated catchment area.

3. In addition it is recommended that the Director of Education consults with the appropriate union(s) following a decision being taken to agree appropriate staffing for the new Maidenhill Primary School and Nursery Class and take forward this process at an appropriate time in advance of the new school's opening. The appointment of a head teacher and senior staff would be taken forward as appropriate.

BACKGROUND

4. In November 2016 the Education Committee approved that the department should carry out a formal consultation exercise on the proposal described in paragraph 1. A copy of the original consultation document is included as *Appendix 1* of the report on the consultation appended to this paper.

5. The proposal set out in the consultation was designed to:

(a) discuss the provision of non-denominational primary places in Newton Mearns south and set out the need for an additional non-denominational primary school to serve the area noting that a site at Maidenhill was included as part of the Local Development Plan (LDP) process; and

(b) provide additional early learning and childcare places for Newton Mearns augmenting provision to help meet demand and in preparedness of the increase to 1140 hours of early learning and childcare for three and four year old children by 2020.

6. Under the proposal the new school would be named Maidenhill, located in and serving that development, in addition to some existing addresses in nearby parts of Kirkhill and Mearns catchment areas thereby addressing pressure on places at these primaries as well as helping to establish the new school.

7. The existing associated primary and secondary school transfer arrangements would not be affected by the proposal. The areas of change are already zoned to Mearns Castle High School. Mearns Castle would have another associated primary school; however its planning capacity can accommodate that.

REPORT

8. A full report on the consultation is included in the Consultation Report on the consultative proposal in the appendix to this paper.

9. A total of 37 responses were received through the general consultation; 92% were from East Renfrewshire residents. Overall 59% of these responses (22) agreed with the proposal and both those residing in East Renfrewshire and outwith East Renfrewshire were in favour of the proposal.

10. Of the views expressed in favour of the proposal, the main themes by all respondents through the general consultation are paraphrased below:

- To cope with residential development
- To ensure sufficiency of places

11. A small number of respondents noted that the new school would ease pressure on existing schools. The other reasons cited were mostly of an individual nature or made by fewer than three respondents.

12. Whilst agreeing with the proposal some respondents made qualifying and often individual statements. Some highlighted the walking distance being greater for them and made a plea that the new school would offer what their children currently enjoyed; a few expressed an interest in Gaelic Medium Education (GME) being provided.

13. The concerns and issues raised by the respondents who disagreed with the proposal were mostly of an individual nature, or by very few respondents. A reason expressed by a few respondents concerned the proposed new school's catchment and their view that it should comprise only future new residential development. A few respondents cited concern over the provision of safe walking/cycling routes as well as roads infrastructure particularly from the Mearnskirk area to the proposed new school; and concern of the potential of siblings being at different schools. A few respondents disagreed with the proposal citing there was no consideration for the provision of GME.

14. Whilst disagreeing with the proposal a few agreed that new school provision was needed to meet residential demand, but they expressed concern over the extent of this.

15. External consultants managed the consultation with children and young people in the affected schools and again the majority of pupils 55% also supported the proposal. Their report including the views expressed can be found in *Appendix 2* of the report on the consultation.

16. In line with their requirement under the relevant legislation concerning schools consultation, Education Scotland submitted a report in relation to the proposal. Their full report is provided as *Appendix 4* to the Consultation Report. The Education Scotland report records that "The council received 37 responses, the majority of which expressed support for the council's proposal"; and that "Almost all parents, pupils and staff who met with HM Inspectors support the proposal."

17. The report reinforces educational benefits set out in the consultation paper: "East Renfrewshire Council's proposal to establish a new non-denominational primary school and nursery class in Maidenhill, Newton Mearns has clear educational benefits. The proposal has the potential to provide children who will attend the new school with a modern, purpose-built building designed to meet the learning needs of its learners. The new school will enhance provision for early learning and childcare which will potentially benefit the wider community. The proposal will also ease pressure in indoor and outdoor facilities at Kirkhill and Mearns Primary Schools, both of which are already running at near-full capacity. Almost all stakeholders who met with HM Inspectors support the proposal. In taking its proposal forward, the council should continue to engage with stakeholders to ensure that safe routes to school for walking and cycling are clearly identified."

18. Comments addressing issues raised, including that expressed to Education Scotland, are outlined in paragraphs 49 to 52 of the attached appended report on the consultation.

19. The consultation has shown agreement to increase non-denominational primary and early learning and childcare places in Newton Mearns south with the proposed revised delineated catchments areas for Mearns and Kirkhill primary schools and the new Maidenhill Primary School and Nursery Class being established for school session 2019-20.

20. Should the proposal ultimately be approved, as part of continuous improvement the Education Department will learn from the establishment of the new St Clare's Primary School in introducing the new school at Maidenhill and consider steps that could be taken to establish it.

21. The recommendations noted below are made taking full account of the views expressed during this consultation.

FINANCIAL AND EFFICIENCY IMPLICATIONS

22. The Council has included provision of £14.693m million for a non-denominational primary school and nursery class within its current 8-year Capital Plan.

CONSULTATION

23. The paper reports the results of a statutory consultation.

IMPLICATIONS OF THE PROPOSAL

24. Should elected members approve the recommendations of the paper then a new 2-stream non-denominational primary school and 120 FTE place nursery class named Maidenhill Primary School and Nursery Class would be established at Maidenhill, Newton Mearns south from school session 2019-20 and beyond.

25. The current delineated catchment areas of Kirkhill and Mearns primary schools would be revised into three delineated catchment areas, one for the new Maidenhill Primary, a revised one for Kirkhill Primary and a revised one for Mearns Primary. In addition the new Maidenhill Primary School would be an associated primary to Mearns Castle High School alongside the existing four primary schools, namely Calderwood Lodge, Eaglesham, Kirkhill and part of Mearns Primary delineated catchment area.

CONCLUSION

26. The majority of respondents agreed with the proposal and in doing so acknowledged it will lead to benefits for the children and parents of Newton Mearns, importantly addressing sufficiency of educational places for local residents.

RECOMMENDATIONS

27. It is recommended that the Education Committee adopts the proposal that effective from school session 2019-20 the Education Department:

- (a) establishes a new 2-stream non-denominational primary school and 120 FTE place nursery class in the Maidenhill development named Maidenhill Primary School and Nursery Class and in so doing undertakes design consultation and due planning process;
- (b) amends the current delineated catchment areas of Kirkhill and Mearns primary schools into three delineated catchment areas one for the new Maidenhill Primary, a revised one for Kirkhill Primary and a revised one for Mearns Primary as shown in *Appendix 6* of the attached Consultation Report. Children living in the newly defined catchment area for the new Maidenhill Primary, enrolled by the end of June 2019 and attending Kirkhill Primary or Mearns Primary would have the option of transferring to the new Maidenhill Primary or remaining where they are. Once the new Maidenhill Primary is open in August 2019, any new P1 registrations and pupils moving into its delineated catchment area would attend the new Maidenhill Primary for session 2019-20 onwards.

- (c) associates the new Maidenhill Primary with Mearns Castle High School for secondary education in addition to the existing four primary schools, namely Calderwood Lodge, Eaglesham, Kirkhill and part of Mearns Primary delineated catchment area.

28. In addition it is recommended that the Director of Education consults with the appropriate union(s) following a decision being taken to agree appropriate staffing for the new Maidenhill Primary School and Nursery Class and take forward this process at an appropriate time in advance of the new school's opening. The appointment of a head teacher and senior staff would be taken forward as appropriate.

Mhairi Shaw
Director of Education
30 March 2017

Convener Contact Details

Councillor E Green, Convener for Education and Equalities
Councillor Paul O'Kane, Vice Convener for Education and Equalities

Tel: Home 01505 850455
Tel: Mobile 07718 697115

Local Government Access to Information Act 1985

Report Author

Fiona Morrison, Head of Education Services (School Performance and Provision)
Tel: 0141 577 3229

Fiona.Morrison@eastrenfrewshire.gov.uk

Appendix

Consultation Report on the Consultative Proposal: Future Non-Denominational Primary School Provision in Newton Mearns South and Establishment of a New Non-Denominational Primary School and Nursery Class at Maidenhill: From Session 2019-20 and Beyond

Background Papers

Paper to Education Committee, Future Non-Denominational Primary School Provision in Newton Mearns South and Establishment of a New Non-Denominational Primary School and Nursery Class at Maidenhill: From Session 2019-20 and Beyond, 17 November 2016

BLANK PAGE

EAST RENFREWSHIRE COUNCIL : EDUCATION DEPARTMENT

**FUTURE NON-DENOMINATIONAL PRIMARY SCHOOL PROVISION IN NEWTON MEARNS
SOUTH AND ESTABLISHMENT OF A NEW NON-DENOMINATIONAL PRIMARY SCHOOL
AND NURSERY CLASS AT MAIDENHILL: FROM SESSION 2019-20 AND BEYOND**

REPORT BY DIRECTOR OF EDUCATION

BLANK PAGE

EAST RENFREWSHIRE COUNCIL : EDUCATION DEPARTMENT

**CONSULTATION REPORT ON THE CONSULTATIVE PROPOSAL:
FUTURE NON-DENOMINATIONAL PRIMARY SCHOOL PROVISION IN NEWTON MEARN
SOUTH AND ESTABLISHMENT OF A NEW NON-DENOMINATIONAL PRIMARY SCHOOL
AND NURSERY CLASS AT MAIDENHILL: FROM SESSION 2019-20 AND BEYOND**

REPORT BY DIRECTOR

BACKGROUND

1. On Thursday 17 November 2016, the Education Committee approved the issue of a consultative document on a proposal concerning the future of non-denominational primary school provision in Newton Mearns south and the establishment of a new non-denominational primary school and nursery class at Maidenhill to take effect from school session 2019 – 2020. A copy of the original consultative document is attached as *Appendix 1*.
2. The consultative document discusses the need to increase primary non-denominational school places to serve known planned new residential development in the Maidenhill/ Malletsheugh area of Newton Mearns as recorded in the current Local Development Plan. The consultative proposal provides evidence of the need for additional places given that other local schools have high occupancy levels, that it is not considered viable to extend them, and the extent of additional pupils anticipated through the current known planned new housing. The proposal also cites evidence of demand for additional nursery places to serve the area, given local places are at capacity and in preparedness of the increase to 1140 hours of early learning and childcare by 2020.
3. Under the proposal the new school would be named Maidenhill, located in and serving that development, in addition to some existing addresses in nearby parts of Kirkhill and Mearns catchment areas thereby addressing pressure on places at these primaries as well as helping to establish the new school.
4. The existing associated primary and secondary school transfer arrangements would not be affected by the proposal. The areas of change are already zoned to Mearns Castle High School. Mearns Castle would have another associated primary school; however its planning capacity can accommodate that.
5. The Council's capital plan has provision (£14.693m) for a new non-denominational primary school and nursery class, which is the subject of the consultative proposal.

CONSULTATION PROCESS

6. The Council undertook the consultation on its proposal with reference to the Schools (Consultation) (Scotland) Act 2010 as amended.
7. The formal consultative document was issued to statutory consultees with an accompanying letter explaining the process and inviting views; it was also made publicly available. The information included prior notice of a public meeting to discuss the proposal.

8. The existence of the consultative document was publicised in the press and copies were made available in the Council Offices, in affected schools and the document was also sent to doctors' surgeries. The consultation was well publicised on the Council's website with a dedicated page (<http://www.eastrenfrewshire.gov.uk/schoolconsultation>) to facilitate information and invite interested parties to respond to the proposal; and there was engagement through the Council's facebook and twitter feed.
9. Written representations on the consultative proposal were sought from all interested parties including Parent Councils of all affected schools (Kirkhill Primary School, Mearns Primary School and Nursery Class, and Mearns Castle High School in addition to early learning and childcare facilities, including partnership provider nurseries, in the Newton Mearns area). An online form was made available for this on the website, or instead respondents could submit by posting a hard copy of the response form or by writing to the Education Department. *Appendix H* of the original consultative proposal document in *Appendix 1* shows the proforma to help consultees submit a response if they wished to use it.
10. In accordance with statutory requirements, pupils, parents/carers affected by the proposal, the Parent Councils, members of staff and unions representing staff in the affected schools were invited to respond to the proposal. Copies of the consultation material were also sent to members of the Education Committee, local Community Councils, current community users of the affected schools, East Renfrewshire Community Planning Partnership, local elected members, local Members of Parliament and the local Members of Scottish Parliament representing residents in the area. Education Scotland was advised of the consultation and a copy of the consultation pack was sent.
11. Head teachers of affected schools were asked to ensure that they included the consultation on a staff meeting agenda and advise staff of the consultation period and that they could submit an individual and/or a group response or respond through their union representative(s).
12. The Schools (Consultation) (Scotland) Act 2010 as amended requires that the pupil voice is heard on this matter in so far as the authority considers them to be of suitable age and maturity. The Education Department followed the guidance for local authorities on pupil consultations provided by Scotland's Commissioner for Children and Young People, with the assistance of Children in Scotland, and engaged independent educational consultants to conduct the consultation exercise with children and young people in Kirkhill and Mearns primary schools and Mearns Castle High School. The consultants independently managed the pupil consultation exercise and produced a report of all the results of the pupil consultations which is attached as *Appendix 2*.
13. Consultees were asked to be clear about who they were, where they lived, why they were interested including their relationship with the affected schools (e.g. parent of pupil in an affected school, member of staff at an affected school, relative of a pupil at an affected school etc.). They were also asked whether or not they agreed with the proposal, offered the opportunity to give reasons for their agreement or otherwise or had any additional comments. Consultees were advised that petitions would be treated as a single response.
14. To provide further background about the consultative proposal a public meeting was held at 7pm on 15 December 2016 at Mearns Primary School. A meeting specifically for invited representatives of all affected schools Parent Councils and parent representatives of early learning and childcare facilities in Newton Mearns including partnership providers took place on 6 December 2016 at 7pm in Mearns Castle High School.

15. The meetings were chaired by the Convener/Vice Convener for Education and Equalities and the Director of Education and senior officers from East Renfrewshire were in attendance. The main purpose of the meetings was to set out the proposal and provide further background and clarification in answering questions from the audience. The same presentation was made at both meetings. The notes of these meetings are attached as *Appendix 3*.
16. The consultation period was from Monday 28 November 2016 to midnight on Friday 20 January 2017.
17. All responses to the consultation were logged, numbered and acknowledgements sent.
18. Written representations were considered up to and including midnight on Friday 20 January 2017.

THE CONSULTATION: NUMBER OF RESPONSES

19. This section of the report provides information on the number of written responses. Details from the consultation with pupils undertaken by the consultants are considered first, followed by all other written responses. There was one response from a pupil in an affected school gathered as part of the general consultation. This is shown with the other written responses and not alongside the pupil consultation exercise managed by the consultants.
20. Statutory respondents include parents/carers* of all pupils in the affected schools (*where a carer means the responsible adult with whom the affected young person lives), Parent Council of each affected school, parents of any child(ren) expected to attend an affected school within the next two school years, pupils of each affected school considered to be of suitable age and maturity, staff of each affected school, trade unions representing staff employed in the affected schools, East Renfrewshire Community Planning Partnership, local Community Councils, current community users of the affected schools, local elected members, MPs and MSPs representing residents in the area. Education Scotland must also be involved and report on the educational aspects of the proposal.
21. As noted in paragraph 12 above, independent education consultants conducted the consultation exercise with children in the affected schools. A copy of the consultants' report is provided in *Appendix 2*, which outlines the process of engaging primary pupils in Kirkhill and Mearns primary schools and secondary pupils in Mearns Castle High School. Their report summarises all responses and provides details on pupils' views expressed, which will be discussed later.
22. The actual number of returns by pupils expressing a view is shown below:

Number of Pupil Responses		
Primary	Secondary	Total
1290	9	1299

23. A total of 37 unique written returns including on-line submissions were received in response to the consultation, other than the pupil responses directly managed by the consultants. These returns were acknowledged and recorded. As noted in paragraph 19 above of these returns one was from a pupil in an affected school.

24. The table below shows the number of written responses including those submitted by pupils and whether or not the response is from a statutory consultee.

Total Number of Responses: Statutory/ Non-Statutory			
Respondent	From Statutory Respondent	From Non-Statutory Respondent	Total
Pupil (via independent consultants' exercise)	1299	NA	1299
Pupil (others)	1	-	1
All Other Responses	29	7	36

25. 99% of all responses in the above table were from statutory consultees and of those 98% were from pupils and 2% from other individuals.
26. The following table shows the percentage of all responses (37) excluding those managed by the consultants' exercise with pupils and whether or not the response is from an East Renfrewshire resident or otherwise.

Responses (37) excluding those managed by the consultants' exercise with pupils			
Residence	Statutory	Non-Statutory	Total
ERC	78%	14%	92%
Non-ERC	3%	5%	8%
Total	81%	19%	100%

27. From the table it can be seen that the largest group who responded were East Renfrewshire residents (92% or 34) with 78% being from a statutory respondent. Respondents residing outwith the Council area accounted for only 3 (8%) of the responses.

THE VIEWS EXPRESSED: SUMMARY OF VIEWS

28. This section provides a summary of the views within the written submissions.
29. As noted in paragraph 12 above, the views of pupils are recorded in the independent consultant's report in *Appendix 2*. The table below provides a summary of the views in the consultant's report. It shows the percentage of pupils who agreed and those who disagreed with the proposal of all those who expressed a preference. The consultants note that 150 primary pupils and 1239 secondary pupils chose not to make a response/express a view. In addition 23 primary pupils recorded that the proposal was neither a good nor bad idea. Therefore in total 88% (1290) of primary pupils responded that they agreed/disagreed with the proposal and only 1% (9) of secondary pupils recorded their views.

Sector	Number of Responses	% Responses who Agree with Proposal	% Responses who Disagree with Proposal
Primary	1290	55%	45%
Secondary	9	78%	22%
Total	1299	55%	45%

30. Overall a majority of pupils agreed with the proposal (55%). Of the primary schools, 68% of Kirkhill Primary pupils who expressed a preference agreed with the proposal and 46% of Mearns Primary pupils. More details can be found in the consultants' report in *Appendix 2*.
31. The following table provides an analysis of the views of all 37 respondents other than those gathered from pupils by the consultants. It includes the one pupil as noted in paragraph 19 who responded to the general consultation, given they have specifically chosen to respond and also because it is not possible to determine if they also responded via the exercise managed by the consultants. The table shows whether responses are from East Renfrewshire residents or non- East Renfrewshire residents and whether they are in favour of the proposal or not.

Responses (37) excluding those managed by the consultants' exercise with pupils			
Residence	Agree	Disagree	Total
ERC	51%	41%	92%
Non-ERC	8%	-	8%
Total	59%	41%	100%
Total Number	22	15	37

32. Overall 59% of these responses (22) agreed with the proposal and both those residing in East Renfrewshire and outwith East Renfrewshire were in favour of the proposal.
33. The table below shows the views of the 37 respondents whether responses are from a statutory or non-statutory consultee and whether they are in favour of the proposal or not.

Responses (37) excluding those managed by the consultants' exercise with pupils			
Statutory / Non-Statutory	Agree (%)	Disagree (%)	Total (Number)
Statutory	60%	40%	30
Non- Statutory	57%	43%	7

34. Of the 37 responses, 30 were from statutory consultees and of them all but one were from parents/carers* whose children attend an affected school/early learning and childcare facility (*where a carer means the responsible adult with whom the affected young person lives). 60% of statutory respondents and 57% of non-statutory respondents agreed with the proposal. No groups responded to the proposal.

35. The table below summarises views for all responses received.

All Responses			
Respondent	Number of responses	% Responses who Agree with Proposal	% Responses who Disagree with Proposal
Pupil (via independent consultants' exercise)	1299	55%	45%
All Other Responses	37	59%	41%

36. The majority of respondents were in favour of the proposal.

THE VIEWS EXPRESSED: MAIN POINTS

37. This section details the main points raised at the meetings and within the written submissions. All submitted written responses were read by officers to ensure that the main points from respondents were included in this report.

Main Points – Pupils via Independent Consultants' Exercise

38. The views of pupils are recorded in the independent consultants' report in *Appendix 2*.

39. The following is a summary of the main points arising from the responses submitted by pupils to the proposal.

40. In the consultants' exercise of the views expressed by pupils in favour of the proposal, the main themes are paraphrased below:

- Eases pressure on existing schools- avoids overcrowding
- Ensures enough places for children to go to school to learn
- Need because of new housing

41. The main reasons cited by pupils who disagreed with the proposal were environmental impact; traffic concerns; concern over siblings/friends attending different schools and of people perhaps having to move to the new school. Environmental impact was the main reason.

42. Sustainability is a main tenet of the Local Development Plan and should the proposal ultimately be approved, the new school and its grounds would be taken forward adhering to this principle, sympathetic to its environment and build in opportunities for pupils to continue to engage their interest in sustainable development under curriculum for excellence.

Main Points – Of All Respondents (Other than Pupils via Independent Consultants' Exercise)

43. Various themes were highlighted by the 37 respondents to the proposal.

44. Of the views expressed in favour of the proposal, the main themes by all respondents are paraphrased below:

- To cope with residential development
 - To ensure sufficiency of places
45. A small number of respondents noted that the new school would ease pressure on existing schools. The other reasons cited were mostly of an individual nature or made by fewer than three respondents.
46. Whilst agreeing with the proposal some respondents made qualifying and often individual statements such as highlighted the walking distance being greater for them and made a plea that the new school would offer what their children currently enjoyed. A few expressed an interest in Gaelic Medium Education (GME) being provided.
47. The concerns and issues raised by the respondents who disagreed with the proposal were mostly of an individual nature, or by very few respondents. A reason expressed by a few respondents concerned the proposed new school's catchment and their view that it should comprise only future new residential development. A few respondents cited concern over the provision of safe walking/cycling routes as well as roads infrastructure particularly from the Mearnskirk area to the proposed new school; and concern of the potential of siblings being at different schools. A few respondents disagreed with the proposal citing there was no consideration for the provision of GME.
48. Whilst disagreeing with the proposal a few agreed that new school provision was needed to meet residential demand, but they expressed concern over the extent of this.

COMMENTS ON THE VIEWS EXPRESSED / ISSUES RAISED

49. Albeit expressed by only a very small number, the few points recorded in paragraph 47 are noted below with comment.

A. Issue: New school's catchment only for future new residential development

Discussion:

The consultative proposal document concerned the future of non-denominational primary provision in Newton Mearns south and the establishment of a new non-denominational primary school and nursery class. Under the proposal, Kirkhill Primary and Mearns Primary delineated catchment areas would be revised to allow a third delineated catchment area to be established for the new school. This proposed new delineated catchment area would serve the main new housing developments as currently planned with location as noted in the Local Development Plan at Maidenhill and also serve some existing established addresses in nearby parts of the Kirkhill and Mearns delineated catchment areas. This would help address pressure on places at these schools, which are currently operating with very high occupancy levels in addition to helping to establish the new school. This aspect is commented favourably by a number who responded to the consultation. The residences that are proposed to transfer to the new school's delineated catchment area comprise those south east of Ayr and Eaglesham roads i.e. generally the Mearnskirk area.

Those who expressed a desire for only future new residential developments to be assigned to the proposed new school were almost all residents from the affected part of those main developed areas currently in Kirkhill and Mearns primary school delineated catchment areas that would transfer to the proposed new school, i.e. mainly Mearnskirk area. It is appreciated that some of the addresses to the east of Ayr road across from Mearns Primary School will be physically nearer Mearns compared to the proposed new school. However Mearns Primary School is located at the edge of the existing main

developed area within its catchment area and these properties are at the southern most edge of this developed area near the planned new residential development.

There is also new residential development planned on the west of Ayr road (same side as Mearns Primary School) and the west of Hunter drive across from Mearns Primary. Planning for the additional places has taken this into account and under the proposal these new houses would be in Mearns delineated catchment area.

In defining a delineated catchment area taking into account geographies, the location of existing schools and the extent of their delineated catchment areas, almost inevitably there will be some properties that are physically closer to a school they are not associated with. This is the case for some existing schools and their catchment areas.

Overall it is considered there are wider benefits to the composition of the proposed new school's delineated catchment area for the reasons cited above.

B. Issue: Provision of safe walking/cycling routes and road infrastructure

Discussion:

In addition to being specifically included in the proposal document, the provision of safe walking/cycling routes and adequate road infrastructure for the whole new development at Maidenhill was discussed at the public meeting, where a senior manager from planning development was in attendance.

The Environment Department is overseeing the whole of the Maidenhill development ensuring appropriate master planning. In the master plan it is envisaged that the proposed network of streets and roads will provide the key movement infrastructure for the new development, supplemented by the creation of a sustainable movement network. This will facilitate and encourage movement by foot, cycle and bus. Existing path infrastructure will be enhanced with the provision of new paths and a cycling network will be established and integrated with new development proposals.

The new development will be connected with existing established areas. There will be two points of access to the proposed development, one from the upgraded old Ayr Road and one from the Glasgow South Orbital. The upgraded road will have a 3 metre wide cycle way and pedestrian access.

New bus stops will be established within the master plan site to enable all future residents to be within 10 minutes walk of public transport. An access corridor will be established that will function also for the overall Maidenhill/ Malletsheugh area better connecting the wider area. It will connect Mearnskirk and Ayr Road to the proposed new school by way of green cycle and walking routes. As highlighted by the senior manager from planning development at the public meeting the Council will ensure that there is a safe walking route to the proposed new school in place ready for August 2019.

The over-arching principle of the master plan movement strategy is to provide a new well connected and walkable neighbourhood. School site and traffic management are being carefully considered including the general road layout and school entrance to mitigate and minimise any traffic congestion around the site at the start and end of the school day. Pedestrian and traffic management will continue to be considered at all stages of the development.

C. Issue: Potential of siblings attending different schools

Discussion:

Under the proposal the new primary school and nursery class would open for session 2019-20, with transition arrangements taking place during session 2018-19 and January 2019 being the first application period for P1 registration for session 2019-20. Children living in the newly defined catchment area for the proposed new school, enrolled by the end of June 2019 and attending Kirkhill or Mearns would have the option of transferring to the new non-denominational school or remaining where they are. Once the new school is open in August 2019, any new P1 registrations and pupils of other stages moving into its delineated catchment area would attend the new school for session 2019-20 onwards.

The potential for siblings attending different schools was expressed by a few parents/carers in terms of transition and keeping families together in the same school being easier for families. This could potentially only happen for a small number of cases where families reside in the delineated catchment area of Mearns/Kirkhill whose address is from that part of the developed areas transferring to the proposed new school's delineated catchment area and who have a child enrolled in these schools in P1 to P6 by school session 2018-19 and also have a younger sibling due to attend school from academic session 2019-20.

At present there are just over 70 families who reside in the affected area who if they remain at their current address would be in the delineated catchment area of the new school from August 2019. We do not know the number of future younger siblings. However, using actual sibling associations in the local schools it is estimated that there would be fewer than 25 families that are likely to have siblings. Therefore it is estimated that 25 families could potentially be affected assuming they have younger siblings due to attend the new school from school session 2019-20 onwards and choose for their older children to remain at Mearns/Kirkhill.

Families with younger siblings due to attend the proposed new school from August 2019 onwards have the option of moving their older children also to the proposed new school. If however they do not wish to do that then the families can still apply for a place for the younger sibling at the same school (Mearns/Kirkhill) as the older sibling by submitting a placing request. These requests will have a higher degree of priority since they have an older sibling already in attendance at the school they are applying for.

Issue: Other issues raised by small number of respondents

50. In total under 5 respondents from those agreeing/disagreeing with the proposal expressed a comment on the provision of GME in their response about the proposed new school. Not all resided in East Renfrewshire.
51. As noted in the consultative document the new school proposal was put to Education Committee by the Director of Education to ensure sufficient educational places. At present East Renfrewshire like many other authorities provides Gaelic Medium Primary Education (GMPE) by providing transport to take children of interested parents/carers to established GMPE provision in other local authorities. These other authorities have historically greater numbers requesting GMPE, but have offered places to other authorities via the placing request process. To date all requests for GMPE for East Renfrewshire residents have been met.
52. The provision of specific places for GMPE in East Renfrewshire would be subject to a different consultation following an approach from parents/carers who must evidence demand. On receipt of such a request an authority would undertake an initial appraisal of

a GMPE assessment area and proceed to consider a full evaluation should there be demand for 5 or more in the same year group. The full assessment stage is a statutory process that would take place to ultimately determine if GMPE would be established or not.

ALLEGED OMISSIONS AND INACCURACIES

53. The Schools (Consultation) (Scotland) Act 2010 as amended places a requirement on the Council to provide details of any inaccuracy or omission within the consultative document, which has been either discovered by the Education Department or suggested by any other person. The Education Department would then determine if relevant information has been omitted or if there has been an inaccuracy and then take appropriate action which may include the issue of a correction or the reissuing of the Proposal paper or the revision of the timescale for the consultation period as appropriate. In that event, relevant consultees and Education Scotland would be advised. There were no such matters raised during the consultation period.

SUMMARY OF ISSUES RAISED BY EDUCATION SCOTLAND (HMIE) AND RESPONSES OFFERED

54. In line with the requirements of the terms of the Schools (Consultation) (Scotland) Act 2010 as amended, a report was provided by Education Scotland in relation to the proposal.

55. The full report submitted by Education Scotland with regard to the proposal is provided as *Appendix 4*. The department notes that Education Scotland has stated that “The council received 37 responses, the majority of which expressed support for the council’s proposal”; and that “Almost all parents, pupils and staff who met with HM Inspectors support the proposal.”

56. The report reinforces educational benefits set out in the consultation paper: “East Renfrewshire Council’s proposal to establish a new non-denominational primary school and nursery class in Maidenhill, Newton Mearns has clear educational benefits. The proposal has the potential to provide children who will attend the new school with a modern, purpose-built building designed to meet the learning needs of its learners. The new school will enhance provision for early learning and childcare which will potentially benefit the wider community. The proposal will also ease pressure in indoor and outdoor facilities at Kirkhill and Mearns Primary Schools, both of which are already running at near-full capacity. Almost all stakeholders who met with HM Inspectors support the proposal. In taking its proposal forward, the council should continue to engage with stakeholders to ensure that safe routes to school for walking and cycling are clearly identified.”

57. The Council will of course continue to engage with stakeholders over the provision of safe walking/cycling routes. This has been discussed further in paragraph 49 (B) above.

EQUALITIES CONSIDERATIONS

58. In making this proposal an equalities impact assessment has been carried out and is provided as *Appendix 5*.
59. The Council is aware of the Public Sector Equality Duty articulated in the Equality Act 2010 scheme which came into force on 6 April 2011. This provision requires that the Council in exercising its functions has regard to the need to:
- (a) eliminate discrimination, harassment, victimisation and any other conduct that is prohibited by or under this Act;
 - (b) advance equality of opportunity between persons who share a relevant protected characteristic and persons who do not share it;
 - (c) foster good relations between persons who share a relevant protected characteristic and persons who do not share it.
60. The impact of the proposal is assessed as low.

PROCEDURES FOR MINISTERIAL CALL-IN

61. Under the Schools (Consultation) (Scotland) Act 2010 as amended this proposal is not subject to ministerial call-in. As such the final decision on the proposal will be taken by East Renfrewshire Council's Education Committee, having due regard to the view of stakeholders expressed through the consultation exercise.

CONCLUSION

62. The proposal was agreed by the majority of respondents. 55% of pupils responding through the consultants' exercise agreed with the proposal and 59% of respondents through the general consultation. There were only 37 respondents to the general consultation.
63. It is accepted that there is a need to ensure sufficient pupil places.
64. The Education Scotland report noted the majority support the proposal and that almost all of the stakeholders they met were also supportive of the proposal. HM Inspectors recorded that the proposal has "clear educational benefits". They noted a few parents expressed some concerns about the future provision of safe walking routes to the new school, particularly for those children who may have further to travel as a result of the proposed changes to catchment areas. In this regard they asked that in taking forward the proposal, the Council should continue to work with stakeholders to ensure such routes are identified and promoted. As noted above the Council has plans to do so.
65. Should the proposal ultimately be approved, as part of continuous improvement the Education Department will learn from the establishment of the new St Clare's Primary School in introducing the new school at Maidenhill and consider steps that could be taken to establish it.
66. Taking full account of the views expressed during this consultation, the following recommendations are made.

RECOMMENDATIONS

67. It is recommended that the Education Committee adopts the proposal that effective from school session 2019-20 the Education Department:
- (a) establishes a new 2-stream non-denominational primary school and 120 FTE place nursery class in the Maidenhill development named Maidenhill Primary School and Nursery Class and in so doing undertakes design consultation and due planning process;
 - (b) amends the current delineated catchment areas of Kirkhill and Mearns primary schools into three delineated catchment areas one for the new Maidenhill Primary, a revised one for Kirkhill Primary and a revised one for Mearns Primary as shown in *Appendix 6*. Children living in the newly defined catchment area for the new Maidenhill Primary, enrolled by the end of June 2019 and attending Kirkhill Primary or Mearns Primary would have the option of transferring to the new Maidenhill Primary or remaining where they are. Once the new Maidenhill Primary is open in August 2019, any new P1 registrations and pupils moving into its delineated catchment area would attend the new Maidenhill Primary for session 2019-20 onwards.
 - (c) associates the new Maidenhill Primary with Mearns Castle High School for secondary education in addition to the existing four primary schools, namely Calderwood Lodge, Eaglesham, Kirkhill and part of Mearns Primary delineated catchment area.
68. In addition it is recommended that the Director of Education consults with the appropriate union(s) following a decision being taken to agree appropriate staffing for the new Maidenhill Primary School and Nursery Class and take forward this process at an appropriate time in advance of the new school's opening. The appointment of a head teacher and senior staff would be taken forward as appropriate.

Mhairi Shaw
Director of Education
March 2017

APPENDICES- CONTENT

- 1. Original Consultative Document:**
Future Non-Denominational Primary School Provision in Newton Mearns South and Establishment of a New Non-Denominational Primary School and Nursery Class at Maidenhill: From Session 2019-20 and Beyond
- 2. Results of Consultation with Pupils:**
Prepared by Marie Kelly and Stuart Allison (External Consultants)
- 3. Notes of the Public Meeting and the Meeting of Parent Council Representatives**
- 4. Education Scotland Report:**
Addressing educational aspects of the proposal by East Renfrewshire Council
- 5. Equality Impact Assessment**
- 6. Delineated Catchment Areas for Kirkhill Primary School, Mearns Primary School and the New Maidenhill Primary School Effective for School Session 2019-20 and Beyond**

BLANK PAGE

EAST RENFREWSHIRE COUNCIL : EDUCATION DEPARTMENT

THIS IS A FORMAL CONSULTATIVE DOCUMENT

**FUTURE NON-DENOMINATIONAL PRIMARY SCHOOL PROVISION IN NEWTON MEARNS
SOUTH AND ESTABLISHMENT OF A NEW NON-DENOMINATIONAL PRIMARY SCHOOL
AND NURSERY CLASS AT MAIDENHILL: FROM SESSION 2019-20 AND BEYOND**

NOVEMBER 2016

This document has been issued by the Education Committee of East Renfrewshire Council for consultation in terms of the Schools Consultation (Scotland) Act 2010 as amended.

BLANK PAGE

EAST RENFREWSHIRE COUNCIL : EDUCATION DEPARTMENT

**FUTURE NON-DENOMINATIONAL PRIMARY SCHOOL PROVISION IN NEWTON
MEARNS SOUTH AND ESTABLISHMENT OF A NEW NON-DENOMINATIONAL
PRIMARY SCHOOL AND NURSERY CLASS AT MAIDENHILL: FROM SESSION 2019-20
AND BEYOND**

1. Kirkhill Primary and Mearns Primary are non-denominational primary schools that serve the Newton Mearns area; they currently have high occupancy levels. The Adopted Local Development Plan (LDP1) (2015) includes significant expansion of housing in the Maidenhill and Malletsheugh areas of Newton Mearns South Strategic Development Opportunity (SDO) - Maidenhill master plan. Provision for a new non-denominational primary school with prefive provision is included in the LDP1 to ensure that growth does not adversely impact on the infrastructure in the area.

PURPOSE OF THE CONSULTATION

2. To consult on the provision of a new 2-stream (i.e. 2 class P1-intake) non-denominational primary school and 120 FTE place nursery class at Maidenhill in Newton Mearns. Specifically the purpose is:
 - (a) To consult on the proposal to establish a new non-denominational primary school and nursery class at Maidenhill, Newton Mearns South from session 2019-20 and beyond.
 - (b) The new provision would:
 - i. establish a new non-denominational primary school and thereby expand primary non-denominational provision in Newton Mearns South; and
 - ii. establish a new nursery class at the new school.
 - (c) The existing delineated catchment areas of Kirkhill Primary and Mearns Primary would be reconfigured to establish three delineated catchment areas: a delineated catchment area for the proposed new non-denominational primary school, and revised delineated catchment areas for Kirkhill Primary School and Mearns Primary School. In addition the new non-denominational primary school would be an associated primary to Mearns Castle High School alongside the existing four primary schools, namely Calderwood Lodge, Eaglesham, Kirkhill and part of Mearns Primary delineated catchment area.
 - (d) The name of the new school and nursery class would be Maidenhill Primary School and Nursery Class.

INTRODUCTION

Background

3. East Renfrewshire Education Department is committed to *Everyone Attaining, Everyone Achieving through Excellent Experiences*, and has a well-earned reputation for providing an excellent education for children. This is borne out in the reports received on our schools following inspection by Education Scotland.

4. All councils must ensure effective management of their school places and have a statutory duty to provide sufficient pupil places for their resident population under education legislation.
5. Since the inception of East Renfrewshire Council, ensuring that there are sufficient school and early learning and childcare places has been a main driver for change in the school estate. The Council has made significant investment with new builds and extensions to address this need, and new provision has been taken forward recognising the importance of the environment to support quality learning and teaching and provide community facilities.
6. It is evident that the educational estate has been developed to date to ensure there is sufficient school capacity in accordance with developments listed in the current finalised East Renfrewshire Local Plan and previous Local Plans.
7. The Local Development Plan (LDP) process acknowledges that there needs to be a phased approach to housing developments, which will ensure a continuous supply of land and infrastructure is in place. Key infrastructure includes the need to ensure adequacy of school and early learning and childcare places. Educational provision will be driven by the phasing of the resulting housing developments ultimately taken forward, the scale and type of housing, along with other factors that influence the number of children and young people in schools and nurseries such as class size legislation, to determine the extent of new provision required.
8. The M77 Strategic Development Opportunity (SDO) is the largest development within the LDP. The LDP is clear on the extent of the additional school infrastructure required to meet future demand as a result of the M77 Strategic Development Opportunity in Newton Mearns and Barrhead. The SDO masterplan notes for Newton Mearns:
 - Education facilities – On site provision of 2 primary schools (non-denominational and denominational) and associated pre-ferve provision would be required as an early priority.
9. In 2014 the Council undertook a consultation to establish the new denominational (Roman Catholic) primary and the new school, St Clare's Primary School, is under construction as part of the Faith Schools' Joint Campus to open for August 2017.
10. The Council is now consulting to establish the new non-denominational primary school and nursery class also to serve the Newton Mearns area with operation from August 2019 through this consultative document.
11. The Council publication, *Planning for East Renfrewshire's Future, Key Demographic Trends (July 2016)*, indicates a continuing growth in East Renfrewshire of preschool children and predicts an increase of 19.7% in the under 5 population from 2008 to 2025. It also indicates a 2.3% increase in primary age population during the same period.

Kirkhill and Mearns Primary Schools

12. Kirkhill Primary and Mearns Primary are non-denominational primary schools that serve the Newton Mearns area. Kirkhill is associated with Mearns Castle High School and Mearns Primary is associated with both Eastwood and Mearns Castle high schools (most of its catchment is associated with Eastwood High School and the remainder with Mearns Castle High School) for secondary education. The locations of Kirkhill Primary and Mearns Primary and the associated secondary schools are shown on the map in *Appendix A*.

13. In primary schools, the planning capacity is used to determine the number of pupils that we can plan to take at all stages in the school based on a class size of 30 pupils in all classes. It is noted that from P4 onwards up to 33 pupils can be accepted at each stage and the maximum P1 class size is 25 in terms of pupil to teacher ratio. The planning capacity is used to help monitor provision and demand.
14. Kirkhill Primary School was opened by the former Strathclyde Regional Council in 1960 and has been extended over the years to its current 3-stream (3 class P1-intake) provision. The school's current planning capacity is 630 pupil places. Kirkhill PS attracts a number of placing requests each year.
15. In 2015-16 Kirkhill Primary was at 99% occupancy of its planning capacity (also 99% in 2016-17, pre-official September census) and it is anticipated that the pupil roll will continue to increase as a result of house building in the area. At present Kirkhill Primary School operates on a very busy site, has already been extended and it is not considered a viable option to extend the existing school any further.
16. Mearns Primary was opened at the current site by East Renfrewshire Council in 2001 financed through the former Private Finance Initiative (PFI) and is 4-stream (4 class P1-intake) provision. The school's current planning capacity is 840 pupil places and it also has a 60:60 place nursery class. The school attracts a number of placing requests each year.
17. In 2015-16 Mearns Primary was at 99% occupancy of its planning capacity (also 99% in 2016-17, pre-official September census) and the nursery class is at capacity and oversubscribed on an annual basis.
18. Given the extent of housing developments at Maidenhill and Malletsheugh it is anticipated that Mearns Primary School roll will in the future exceed the places available and additional early learning and childcare places will be required to address the resulting population growth.
19. Mearns Primary School is one of the largest primary schools in Scotland. The existing building and site are appropriate for a modern 4-stream primary with nursery provision, with the all-weather pitch and internal PE space enabling the school to deliver the required 2 hours of quality PE per week for all primary pupils and a quality experience for nursery children. It is noted however that the school is very busy; in particular traffic around the school at opening and closing times can be very congested.
20. Most of the Mearns Primary School site is under the concession associated with the PFI contract. The Council owns part of the land. Being a PFI school, contract negotiations would be required should it be desirable and feasible to extend the school to take forward any new build whether permanent or temporary / site changes.
21. Crookfur Primary School is the other non-denominational primary school in the Newton Mearns area. The 2-stream provision at Crookfur Primary School is required to meet demand from its delineated catchment area. There is new residential development in the Crookfur catchment area and there is not scope to realign its delineated catchment area with that of Kirkhill/Mearns delineated catchment areas to alleviate the need for new provision. Crookfur nursery class has also recently been extended to 90:90 places from August 2016 to meet demand and the school is currently undergoing major remodelling and refurbishment.

22. Given the high occupancy levels of Kirkhill Primary and Mearns Primary; that it is not considered viable to extend existing local schools; the impact of additional housing; a new non-denominational primary school is required from August 2019 as is the need to increase early learning and childcare places. Provision of a site for a new non-denominational primary school and nursery class is that included in the current Local Development Plan.
23. The Council has included provision for a non-denominational primary school and nursery class within its current 8-year Capital Plan (£14.693m).
24. *Appendix B* shows the current delineated catchment areas of Kirkhill and Mearns primary schools.
25. East Renfrewshire Council's Single Outcome Agreement outlines the local outcomes which will be delivered for its residents. In particular this proposal would contribute to the realisation of the following outcomes:
 - (a) SOA1: All children in East Renfrewshire experience a stable and secure start to their lives and are supported to succeed.
 - (b) SOA2: East Renfrewshire residents are fit and active and have the skills for learning, life and work.
26. The proposal would address the Council's duties under the Children and Young People (Scotland) Act 2014 to provide 600 hours entitlement (including an element of flexibility) to early learning and childcare for every 3 and 4 year old child resident in its area. In addition it would help the Council address the planned expansion to 1140 hours of early learning and childcare by 2020 for the Newton Mearns south area.

PRESENT POSITION

27. The Scottish Government requires that a census is carried out in all schools at a specific point each year. This is the officially recognised time period to record pupil and staff numbers. It informs funding and is used to compare annual variations. Schools' populations are dynamic and slight variations in the number of pupils during any one school session are to be expected.

Kirkhill Primary School

28. The official September census roll for Kirkhill Primary School over the last 5 years is given below:

	2011-12	2012-13	2013-14	2014-15	2015-16
P1-P7	611	612	624	612	621

29. Pupil numbers at Kirkhill Primary School have increased slightly over this period, from the school having an occupancy of 97% to 99%. There are currently some children that have been redirected to other schools because they moved into the school's catchment area outwith the normal placing round and there was not a space available at that stage at that time, as can happen in popular high occupancy schools.
30. The chart in *Appendix C* shows the increase in pupil numbers over the last 15 years. After a period of increasing rolls to around 2010, pupil numbers have levelled out albeit at high occupancy levels. Of the 2015-16 roll, only 37 of the 621 pupils resided out with

the authority (placing requests); these are generally spread evenly across the stages. There is a similar proportion in 2016-17, where the total roll is 624 (pre-official census).

31. The crucial stage in a primary school in seeking to manage the roll is the P1-intake; it is the capacity / availability of places in this stage that best determines the potential for additional pupils to be taken throughout the school. The planned P1-intake capacity is the maximum number that the authority considers for planning purposes for 'catchment demand'. However in cases where 'catchment demand' exceeds a school's planned P1-intake, the capacity can be greater provided additional measures are taken such as ensuring the pupil: teacher ratio/ teaching class size limit is maintained and there is physical space (classrooms, toilet numbers etc.).
32. The table below shows the current planned P1-intake capacity and recent average P1 enrolments from local residents.

	Planned P1-Intake Capacity	Average P1 Enrolments from Local Residents
Number of Pupils	90	78

33. For school session 2016-17 the number of P1 enrolments from local residents is 71, albeit the actual P1 roll is higher at 75 through successful placing requests from outwith the area.
34. In September 2016 (pre-official census) the school roll of Kirkhill Primary School was 624 pupils, up from 481 in 2001-02. This represents an increase of 30%.
35. In 2002 Kirkhill Primary School was extended to its current status to provide full 3-stream provision (i.e. 21 class bases and associated general purpose spaces).
36. Based on the current information provided by East Renfrewshire Council Planning Section and the LDP, the number of planned additional residential units that are in the Kirkhill Primary School delineated catchment area is around 160 until 2022 with approximately a further 12 beyond 2022. Up to 2022 this represents an increase of around 35 additional pupils or 5 per stage.
37. *Appendix D* provides a roll projection for Kirkhill Primary School which shows that whilst the school could accommodate local residential demand at the P1 stage, with future inward migration and the effects of potential placing requests, occupancy levels will remain high and a number of children could be redirected as they move into the school's catchment at other stages and at other times of the school year. We must also plan to have sufficient non-denominational places should the recent consultation on proposed new admissions arrangements be approved and require to be invoked, which in that event would put additional pressure on the school.

Mearns Primary School

38. The official September census roll for Mearns Primary School over the last 5 years is given below:

	2011-12	2012-13	2013-14	2014-15	2015-16
P1-P7	806	821	800	829	828

39. Pupil numbers at Mearns Primary School have increased over this period, from the school having an occupancy of 96% to 99%.

40. The chart in *Appendix C* shows the increase in pupil numbers over the last 15 years. After a period of increasing rolls to around 2007, pupil numbers have levelled out albeit at high occupancy levels. Of the 2015-16 roll, only 60 of the 828 pupils reside out with the authority (placing requests); these are generally spread evenly across the stages. There is a similar proportion in 2016-17, where the total roll is 832 (pre-official census).
41. The table below shows the current planned P1-intake capacity and recent average P1 enrolments from local residents.

	Planned P1-Intake Capacity	Average P1 Enrolments from Local Residents
Number of Pupils	120	103

42. For school session 2016-17 the number of P1 enrolments from local residents is 103, albeit the actual P1 roll is higher at 112 through successful placing requests from outwith the area.
43. In September 2016 (pre-official census) the school roll of Mearns Primary School was 832 pupils, up from 728 in 2001-02. This represents an increase of 14%.
44. Mearns Primary School and nursery class opened at its current site in 2001. Prior to that the school outgrew its 2-stream provision at its former site at Mearns Cross due to new residential development at that time. It is a new build 4-stream primary with a 60:60 place nursery class. The school occupies a large and busy site and has 28 primary class bases, 2 nursery class bases and associated general purpose spaces including a large all-weather pitch.
45. Based on the current information provided by East Renfrewshire Council Planning Section and the LDP, the number of planned additional residential units that are in the Mearns Primary School catchment is around 650 until 2022 with approximately a further 620 beyond 2022. The majority of this housing comprises the Malletsheugh / Maidenhill within the LDP. Up to 2022 this represents an increase of around 145 additional pupils or 21 per stage for Mearns Primary School. There is a similar rate of increase post 2022.
46. Mearns Primary already has high occupancy levels and the planned new residential development in its catchment could not be accommodated within the existing capacity.
47. *Appendix E* provides a roll projection for the school to 2022-23, which shows that the planning capacity of Mearns Primary School will be exceeded in a few years. In addition we must also plan to have sufficient non-denominational places should the recent consultation on proposed new admissions arrangements be approved and require to be invoked, which in that event would put additional pressure on the school.
48. The table below shows the total number of non-denominational primary school places in the Newton Mearns south area, current school rolls and the extent of additional pupils from current known planned new residential development in the area as it affects this sector.

	Planning Capacity	Sep 2016 (pre-official)	Proj Total Additional Pupils From New Housing by 2022 (Cumulative)	Proj Total Additional Pupils From New Housing Post 2022 (Cumulative)
Kirkhill PS	630	624	35	3
Mearns PS	840	832	142	142
Total	1470	1456	177	145

49. Looking at both schools together it is evident that capacity is already tight without considering the impact of current known planned residential development. Overall an additional 322 pupils (177 and 145) in total are expected from this additional housing. To address the already high occupancy levels and provide additional places for the anticipated number of pupils in the area warrants the provision of additional 2-streams.

Options Appraisal

50. The site at Mearns Primary School would not accommodate another 2-stream primary school plus expansion in nursery provision. In any event this would not be desirable from an education perspective with potentially over 1400 children and young people on the site of nursery and primary age. Paragraphs 19 and 20 note the current school size and site constraints.
51. As noted earlier, Kirkhill Primary School already has high occupancy levels and whilst the new housing planned for its catchment area can be accommodated within the school albeit with continued high occupancy levels, there is not scope to extend its catchment area to accommodate additional pupils from a section of the existing Mearns Primary catchment area. As noted in paragraph 15 it is also not a viable option to physically extend Kirkhill Primary School.
52. Given the existing high occupancy levels at both Kirkhill and Mearns primary schools, the anticipated future pupil numbers based on current known planned residential development in the area, that it is not considered viable to extend current provision, a new non-denominational primary school is proposed as the preferred option. It is proposed that the new school would have a nursery class to accommodate the increased need for places for 3 and 4 year old children in the Newton Mearns south area.
53. Establishing a new school for the area necessarily affects the current delineated catchment areas of Kirkhill and Mearns primary schools. Reducing their delineated catchment areas helps address the current high occupancy levels at both schools.
54. The new school would serve the additional new residential development as currently planned with location as noted in the LDP at Maidenhill. It is proposed that it would also serve some existing established addresses in nearby parts of the Kirkhill and Mearns delineated catchment areas thereby addressing pressure on places at these schools in addition to helping to establish the new school.
55. *Appendix F* shows the proposed delineated catchment areas for Kirkhill and Mearns primary schools and the proposed new primary school. *Appendix G* highlights part of the proposed new school's delineated catchment area to help illustrate the main areas of change involving existing thoroughfares. This shows the thoroughfares that are proposed to transfer to the new school's delineated catchment areas from those main developed areas currently in Kirkhill and Mearns primary school delineated catchment areas.

56. Given the locale of the site for the proposed new school, it is proposed that the school be named Maidenhill. The other local non-denominational primary schools are similarly named after respective geographical areas in Newton Mearns.
57. The existing associated primary and secondary school transfer arrangements would not be affected by the proposal. The proposed changes to the delineated catchment areas of Kirkhill and Mearns primary schools comprise some parts that are already associated with Mearns Castle High School for secondary education and that would continue to remain so under the proposal; the proposed new school would be associated with Mearns Castle High School which has sufficient capacity as explained in paragraphs 89 to 93 below.

PROPOSAL

New Non-denominational Primary School and Nursery Class at the Maidenhill site in Newton Mearns

58. From school session 2019-20 it is proposed to:
- (a) Establish a new 2-stream non-denominational primary school and 120 FTE place nursery class at Maidenhill and thereby expand primary non-denominational and local authority nursery provision in Newton Mearns South.
 - (b) Amend the delineated catchment areas of Kirkhill and Mearns primary schools to that shown in *Appendix F*. This also shows the corresponding delineated catchment that would be established for the new non-denominational primary school. Children living in the newly defined catchment area for the new school, enrolled by the end of June 2019 and attending Kirkhill Primary or Mearns Primary would have the option of transferring to the new non-denominational school or remaining where they are. Once the new school is open in August 2019, any new P1 registrations and pupils moving into its delineated catchment area would attend the new school for session 2019-20 onwards.
 - (c) The new non-denominational primary school would be an associated primary to Mearns Castle High School in addition to the existing four primary schools, namely Calderwood Lodge, Eaglesham, Kirkhill and part of Mearns Primary delineated catchment area.
 - (d) The name of the proposed new non-denominational primary school and nursery class would be Maidenhill Primary School and Nursery Class.

EDUCATIONAL BENEFITS STATEMENT

59. The vision of the Education Department *Everyone Attaining, Everyone Achieving through Excellent Experiences*, is at the heart of the work that department and school staff undertake as they seek to provide the highest quality education and services to develop the whole individual.
60. Early learning and childcare and primary school experiences are fundamental to the delivery of a broad general education for all children. The aim of *Curriculum for Excellence* is to enable all children and young people to develop their capacities as successful learners, confident individuals, responsible citizens and effective contributors

to society. The Department's vision and values embody these aims, which are furthered by *Curriculum for Excellence and Getting it Right for Every Child*.

61. There is a statutory requirement for every education authority to secure, for their area, adequate and efficient provision of school education. East Renfrewshire Council has organised the structure of school provision so that children can attend their local catchment denominational (Roman Catholic) or non-denominational primary, and can then progress to their local secondary school. For almost all secondary schools, the delineated catchment area of the school corresponds to the sum of the catchment areas of the associated primary schools.
62. The Council also has a statutory duty to make adequate and efficient provision for preschool education for its area in respect of certain children. These children are defined as 'prescribed' preschool children. A preschool child is prescribed during the period from the school term following their third birthday until the end of the school term before they are first eligible to attend primary school.
63. The establishment of a new non-denominational primary school and nursery class in Newton Mearns would result in a number of educational benefits.
64. The increased number of primary non-denominational places in Newton Mearns would meet the demands for catchment places in this area. The proposal, as noted in the preceding section, gives greater long-term certainty of the availability of non-denominational primary school places for current and future East Renfrewshire residents.
65. Providing an additional non-denominational primary school to serve the current Kirkhill and Mearns delineated catchments, would ease pressure on indoor and outdoor facilities at these schools. Both schools operate on a very busy site and as noted earlier occupancy levels are very high at 99% of planning capacity.
66. The accommodation and resources associated with the proposed new non-denominational primary school are also likely to have a positive impact on the motivation, aspirations and enjoyment of children, staff and wider school community. The proposed new school would provide flexible indoor and outdoor learning spaces and would be able to respond to the demands of *Curriculum for Excellence*.
67. For pupils (staff and all building users) with additional support needs the new non-denominational primary school would be fully compliant in terms of the Equality Act 2010.
68. The increased number of places for early learning and childcare in Newton Mearns would help to meet the demands of the residents in the area. Providing a nursery class in the new non-denominational primary school would serve to meet the specific demand for local places.
69. Additional places for early learning and childcare would also build capacity across the area allowing for more opportunity to meet the demand for wraparound sessions, especially given the entitlement for 600 hours of early learning and childcare including providing an element of flexibility and help address the planned move to 1140 hours by 2020 in the local area.
70. The increase in early learning and childcare provision in Newton Mearns should lead to more children accessing their early learning and care in one establishment in both their ante preschool and preschool years, thus reducing the need for additional transitions for

very young children. It will also improve the transitions from nursery to primary with the aim of securing continuous and progressive learning experiences for children that build on prior learning. This would help to unify children's learning and care in the centre of their parent's choice.

71. In recent years, the Education Department has given emphasis to monitoring and evaluating transitions, as children move from preschool to primary and from primary to the secondary sector to ensure that these are smooth, and that learning is continuous and progressive. This is a key requirement of *Curriculum for Excellence*. This careful planning is also required as children move from one stage to the next in any one school. The considerable experience of department and school staff in managing transitions will ensure that the process of establishing a new non-denominational school is carried out in a manner which will ensure that children are not disadvantaged by any change and that continuity and progression will be maintained.
72. As noted in paragraph 57 above, the parts of the delineated catchment areas affected by the proposal are already associated with Mearns Castle High School for secondary education and would continue to remain so under the proposal. The transitions of children from the new non-denominational primary school, Kirkhill and Mearns primary schools to their associated secondary school would remain at a high standard, and would be unaffected by the proposal.
73. Should the proposal be accepted, more children would be within the recommended walking/cycling distances to school and thereby benefit through improved opportunities to promote positive attitudes to health and wellbeing.
74. As noted in paragraph 1 above, there is a new site allocated as part of the Maidenhill master plan within the LDP1. There is master planning associated with the whole SDO and as part of that the provision of a green network is included. The planned sustainable movement network will facilitate and encourage movement by foot, cycle and bus. Existing path infrastructure will be enhanced with the provision of new paths within the new development proposals. A cycling network will be established and integrated with new development proposals. The new development will be connected with existing established areas. New bus stops will be established within the master plan site to enable all future residents to be within 10 minutes walk of public transport. The proposed new bus route will provide access to Patterton Park and Ride. An access corridor will be established that will function also for the overall Maidenhill/Malletsheugh area. It will connect Mearnskirk and Ayr Road to the proposed new school by way of green cycle and walking routes. The over-arching principle of the master plan movement strategy is to provide a new well connected and walkable neighbourhood.
75. It is considered that with the creation of the access corridor and with 3 primary schools serving the area that more children would be able to walk/cycle to school/nursery and overall there would be no more pupils entitled to transport to non-denominational schooling in the area.
76. The proposed new building would be built with modern design principles which include efficient energy usage and maintenance and within a purpose built walkable neighbourhood thereby increasing the number of educational places in a sustainable and cost effective way.
77. The new non-denominational primary school based at Maidenhill would be designed to encourage community use. It would be expected that the facilities would be used extensively out with school hours providing benefit to the local community.

78. Under the proposal there would be no detriment to other users of Kirkhill and Mearns primary schools' and Mearns Castle High School's facilities. There would be no change to any existing community use of the affected schools. Indeed with another school to serve the area there would be more facilities available for the community to use.
79. Education Scotland inspections (HMIE) have evaluated both Kirkhill Primary and Mearns Primary School and Nursery Class as being very good or excellent in all quality indicators. The most recent reports are available on-line at www.educationscotland.gov.uk.
80. The authority supports and challenges schools to continue to improve. Following Education Scotland inspections, schools, through the normal school improvement planning process, prepare an action plan indicating how they would address any main points for action identified by the inspection process. Representatives of the local authority quality improvement team follow-up these action plans to assess the extent to which schools continue to improve the quality of their work and to evaluate progress made in responding to any main points for action.
81. In 2010 Kirkhill Primary School had a follow-through by the Quality Improvement team resulting in a positive evaluation in meeting recommendations from the HMIE inspection in 2009. The school is continuing to be supported by the team to ensure further improvement. In 2015 the QI team undertook a follow-through of Mearns Primary School concerning its HMIE inspection of 2013 which resulted in the school making very good progress in taking forward its planned improvement priorities.
82. Should the proposed new non-denominational primary school and nursery class be approved the department would ensure that standards and quality would continue to improve for all learners in the Newton Mearns area.
83. The Head of Education Services and the Quality Improvement team would work with the senior management teams in the affected schools to manage the establishment of the new non-denominational primary. Officers and school staff would work with pupils and parents/carers to ensure that the transfer of pupils would be carefully planned and children would be appropriately supported through the transition as would new children enrolling first at the new school and nursery class. The department is recognised as having excellent quality management procedures and practices and the Director of Education is confident that the establishment of a new non-denominational primary and nursery class would be successfully implemented with no detriment to the quality of education delivered.
84. The Education Department considers that the proposals would not have an adverse impact on any child or staff member in terms of age, gender, religion, race, and disability. Every child and staff member who attends/ works in Kirkhill and Mearns primary schools, whatever their background, nationality, or needs, would continue to be given support to participate in the school curriculum and activities including during the establishment of the new non-denominational primary and nursery class. The department and schools have been successfully evaluated in terms of equality and fairness and meeting learners' needs.
85. It is not considered that there would be any adverse impacts on children attending the affected schools by implementing the proposal. As at present, the authority will continue to monitor the provision in schools and early learning and childcare centres in accordance with established procedures and will provide support and challenge in order to secure continuous improvement in the quality of education.

86. An equality impact assessment will be undertaken as part of the consultation exercise. In carrying out this assessment the department will take account of (or address) any equality issues raised as part of the consultation process. The equality impact assessment will be included in the consultation report on the results.

IMPLICATIONS OF THE PROPOSAL

Transfer to Secondary School

87. There would be no change to admission arrangements to secondary school. Under the proposal, revision of the delineated catchment areas for Kirkhill and Mearns primary schools does not affect any change to the current associated secondary school. The proposed new school's delineated catchment area established from those parts of Kirkhill and Mearns primary schools would still be associated with Mearns Castle High School.
88. Mearns Castle High School's delineated catchment area would not change under this proposal. There would however be an additional primary school associated with Mearns Castle alongside the current associated primary schools namely Calderwood Lodge, Eaglesham, Kirkhill and part of Mearns Primary catchment.
89. At present a total of 7-streams of primary education are associated with Mearns Castle High School; Calderwood Lodge Primary (1-stream), Eaglesham Primary (2-stream), Kirkhill Primary (3-stream) and part of Mearns Primary catchment (1-stream).
90. Although there is a need to increase primary non-denominational places in the area, there are sufficient places at Mearns Castle High School to meet the number of anticipated additional pupils in its catchment. The school's roll in 2015-16 is 1251 of which 147 pupils reside outwith East Renfrewshire. The pre-official census September 2016 roll is 1247. The school can accommodate 1540 pupils and so has sufficient places.
91. Mearns Castle High School has a potential maximum S1-intake of 270 pupils equivalent to 9-streams for its 1540 places. It does not require to operate at its maximum S1-intake because of any pressure from its catchment, albeit the school attracts a number of placing requests.
92. Once all catchment children have been allocated an S1 place at Mearns Castle High School, placing requests are considered based on the priorities listed on the Council website. It is noted that the Council has recently consulted on a change to the admission and transfer arrangements of non-denominational and Roman Catholic schools; this includes a change to the placing request priorities. The outcome of the consultation will be reported to the Education Committee on 20 December 2016.
93. The proposed new non-denominational primary would be a 2-stream school with a nursery class. In time, should the then five associated primary schools reach their maximum places, there would be 9 primary streams associated with Mearns Castle High School; this can be accommodated within the secondary school's planning capacity.
94. Mearns Castle has a number of pupils admitted through placing requests. The S1-intake has been agreed to ensure the Council provides sufficient places to meet catchment demand. As demand for catchment places increases, there will be a corresponding decrease in the number of places made available for placing requests

along with an increase in the S1-intake. As a result, Mearns Castle will be able to accommodate additional catchment pupils as a consequence of those current known planned housing developments.

95. It is acknowledged that the establishment of a new non-denominational primary associated with Mearns Castle would result in fewer places being made available for entry through placing requests places to the school in future years. It should be noted, like all education authorities, East Renfrewshire has a statutory duty to provide sufficient pupil places for its resident population and grant any available placing requests to pupils outwith a school's delineated catchment area unless there is a valid legal reason not to do so.

Early Learning and Childcare Provision

96. East Renfrewshire Council has organised its early learning and childcare provision into four community areas based on locality and address. The communities are as follows:
- Newton Mearns
 - Busby/Clarkston/Eaglesham
 - Giffnock/Thornliebank
 - Barrhead/Neilston
97. The proposed nursery class associated with the new non-denominational primary school would be part of the Newton Mearns community. The new nursery class would also help East Renfrewshire meet the duties placed on local authorities under The Children and Young People (Scotland) Act 2014 as the number of hours entitlement to early learning and childcare is planned to increase to 1140 hours by 2020.

Traffic Management

98. As noted in the educational benefits section above, there is master planning associated with the whole of the Maidenhill development. Within the master plan it is envisaged that the proposed network of streets and roads will provide the key movement infrastructure for the new development, supplemented by the creation of a sustainable movement network. The location of the new school within Maidenhill would benefit children and young people and their parents/carers to be able to walk/cycle to school/nursery with this aspect being designed from the outset. An access corridor will be established that will function also for the overall Maidenhill/ Malletsheugh area better connecting the wider area which with 3 non-denominational primary schools serving Newton Mearns South would also enable more children and their parents/carers to walk/cycle to school/nursery. Overall there would be no more pupils entitled to transport to non-denominational schooling in the area.
99. Within the masterplan the school site and traffic management are being carefully considered including the general road layout and school entrance to mitigate and minimise any traffic congestion around the site at the start and end of the school day. In addition as part of the planning process, a Transport Assessment would be undertaken for the new school. A School Travel Plan would also be developed for the new school. School crossing patrols and school travel plans would be reviewed at other schools in the area to ensure pupil safety and effective traffic management.

Timescale, Transition, Management Arrangements and Support

100. If the proposed new non-denominational primary school and nursery class ultimately gains approval to proceed, then careful consideration would be given to managing the transfer to and the establishment of the new provision. There would be support from the Quality Improvement team working with senior school staff to ensure that pupils are not disadvantaged during the transition. For some children who require additional support there may be the need for an extended period of transition with staff working with parents/carers to ensure that the transfer is as smooth as possible.
101. It is proposed that the new non-denominational primary school and nursery class would open for session 2019-20, with transition arrangements taking place during session 2018-19 and January 2019 would be the first application period for P1 registration starting for session 2019-20.
102. Were the proposal to be adopted, the Education Department would move to provide appropriate staffing for the new non-denominational primary school and nursery class. This process would be undertaken and managed by the Education Senior Manager (Developing People). Consultation with unions would ensure that the interests of staff are considered.
103. Should the proposal receive approval, then engagement over the design of the new non-denominational primary and nursery class would take place with its stakeholders and community in establishing the new provision at Maidenhill.
104. As part of the transition process into the new building, children, parents and staff would have the opportunity to familiarise themselves with the building including social areas, classrooms, play areas and entry/exit points.
105. There are no implications for lets as any current lets at Kirkhill and Mearns could continue, with the proposed additional school provision providing further opportunities for lets.

Current & Future Provision

106. Should the proposal be accepted, East Renfrewshire Council would be able to plan pupil places effectively and comply with its statutory duty to provide sufficient non-denominational places for its resident population in the Newton Mearns South area.
107. The current LDP was adopted in June 2015. The Council has recently begun a review of the LDP to make sure that it remains up to date and reflects Scottish Planning Policy and the current strategic approach set out in the emerging Clydeplan Strategic Development Plan 2. The Main Issues Report (MIR) is the starting point in the preparation of Local Development Plan 2 (LDP2) and is the main consultative stage. As for LDP1, the Education Department will be a key consultee under the statutory planning process as LDP2 develops.
108. The availability and demand of educational places throughout the authority is subject to regular monitoring and review. Examining future provision will continue to be undertaken to ensure there are sufficient educational places in all areas of the Council. This will take into account future local planning processes and resultant new housing land supplies, other demographic changes and relevant modifications to the educational estate as a consequence of local/national educational policy such as expansion of early years, changes in class sizes. Any future changes to the school/ early learning and

childcare estate would be subject of future committee and council reports and any necessary consultation.

FINANCIAL CONSIDERATIONS

109. There is £14.693 million allocated within the Council's current 8-year capital plan to fund the 2-stream non-denominational primary including a 120 FTE place nursery class. This school would be located at Maidenhill in Newton Mearns. This site is indicated in *Appendix F*.
110. The running cost associated with the new non-denominational primary school with nursery class is estimated at £1.7 million, which would be taken forward through the Council's revenue budget process for the department. The Scottish Government has intimated that additional revenue will be provided to councils to support the planned increased entitlement to 1140 hours of early learning and childcare by 2020. At present councils await details of this, which could be used in part to support the operation of the nursery at the new school.
111. As noted in paragraphs 75 and 98, there are no additional transport costs associated with this proposal.

CONSULTATION

112. The Council is required to formally consult on changes to a delineated catchment area, establishing new schools and changes to the admission arrangements or the relocation of any school. How this is carried out and who must be consulted is clearly set out in the Schools Consultation (Scotland) Act 2010 as amended.
113. This report is issued as a formal consultative document and will be made available to all interested parties. A copy of the report is available for inspection at the affected schools and at the Council's Head Office, Eastwood Park, Rouken Glen Road, Giffnock, East Renfrewshire, G46 6UG; and at the Council Offices, 211 Main Street, Barrhead, East Renfrewshire, G78 1SY. An electronic version can be accessed at the East Renfrewshire Council website (www.eastrenfrewshire.gov.uk/schoolconsultation).

Schools Affected

114. The schools affected by the proposals are Kirkhill Primary School, Mearns Primary School and Nursery Class, and Mearns Castle High School. In addition the following early learning and childcare facilities in the Newton Mearns area: Crookfur Nursery Class, Hazeldene Family Centre, Isobel Mair Family Centre; and partnership provider nurseries namely Belmont House, Broom, Elmwood, Kirtktonholme@ Mearnswood and Orchard Park (Newton Mearns). Calderwood Lodge Nursery Class is relocating from August 2017 to the new faith schools' joint campus site at Waterfoot Road Newton Mearns and so will also be considered as part of the early learning and childcare provision serving Newton Mearns.

Period of Consultation

115. The consultation period will last from Monday 28 November 2016 to midnight on Friday 20 January 2017.

Relevant Consultees

116. We will consult with the following:

- parents/ carers of all children/ pupils in the affected schools
- Parent Councils of the affected schools
- parents/ carers of any child(ren)/ pupil(s) expected to attend an affected school within the next 2 school years
- pupils of each affected school (in so far as the education authority considers them to be of a suitable age and maturity)
- school staff (teaching and otherwise) of each affected school
- trade unions representing staff employed in the affected schools
- East Renfrewshire Community Planning Partnership
- local community councils
- local elected members
- local Members of Parliament and local Members of Scottish Parliament
- members of East Renfrewshire Council's Education Committee
- current community users of the affected schools
- Education Scotland

117. During the consultation period a public meeting will be held in Mearns Primary School, Hunter Drive, Newton Mearns at 7:00 pm on Thursday 15 December 2016. Elected members and senior officers of East Renfrewshire Council will be present to discuss the proposal and there will be an opportunity to ask questions at the meeting.

118. Note on Corrections: If any possible inaccuracy or omission in the Consultative Document is discovered by the Education Department or is suggested by any other person, the department will determine if relevant information has been omitted or if there has been an inaccuracy. The Education Department will then take appropriate action which may include the issue of a correction or the reissuing of the Proposal paper or the revision of the timescale for the consultation period as appropriate. In that event, relevant consultees and Education Scotland will be advised.

Responding to the Consultation

119. East Renfrewshire Council invites all interested parties to make written representation on the consultative proposal. Interested parties are encouraged to provide feedback on East Renfrewshire Council's website www.eastrenfrewshire.gov.uk/schoolconsultation ; or alternatively citizens can complete and return the consultation response proforma attached in *Appendix H*.

120. Written responses regarding the proposal will also be accepted by post. Such responses should be clear about who you are, where you live, why you are interested including your relationship with the affected schools (e.g. parent/ carer of pupil in an affected school, member of staff at an affected school, relative of a pupil at an affected school etc.) and whether or not you agree with the proposal, or have any alternative solutions or comments. Petitions will be treated as a single response.

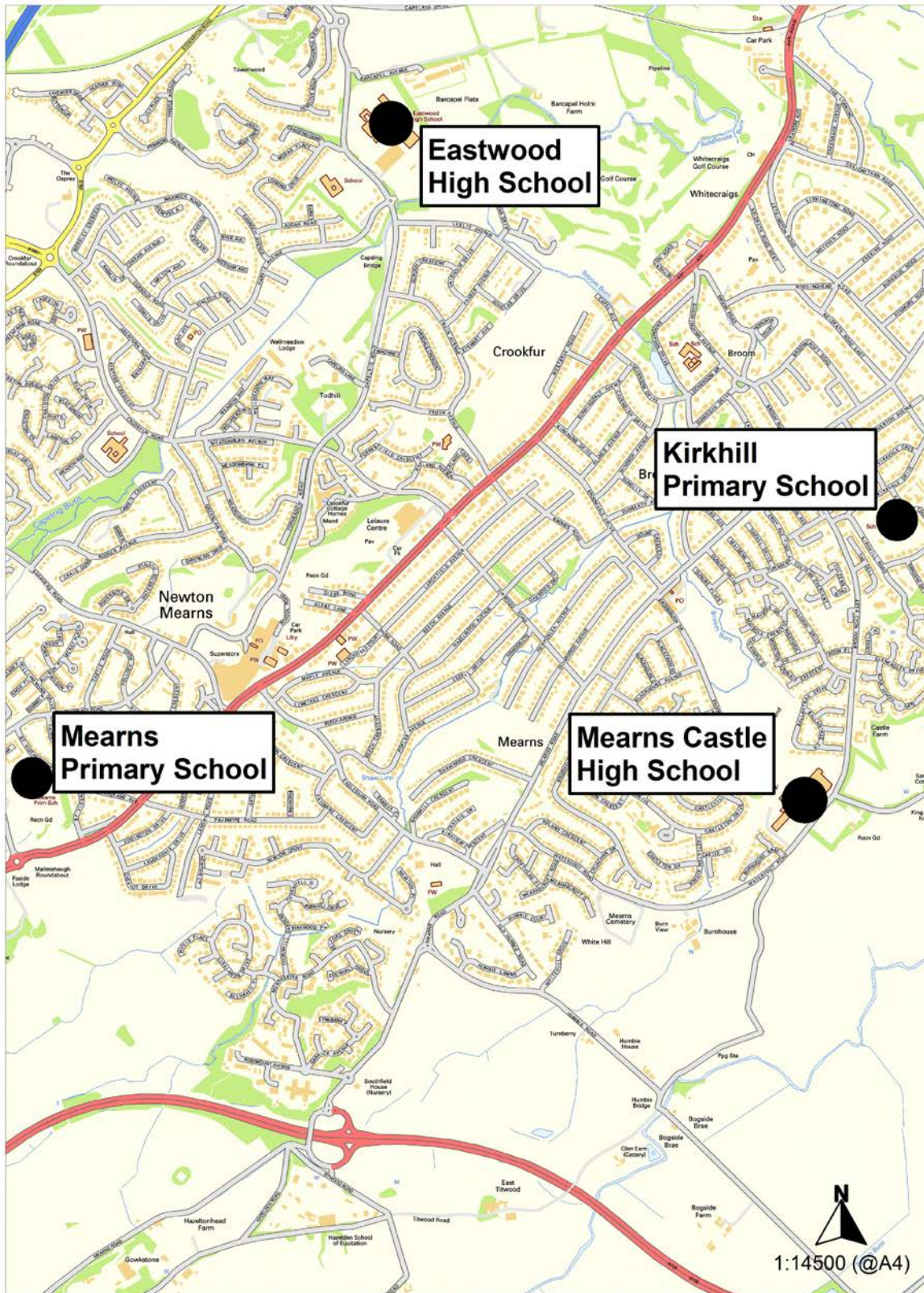
121. Education Scotland is entitled to copies of all responses received. We would therefore advise that your personal information will be supplied to Education Scotland if they request it. Separately other interested parties may also seek sight of the responses received and accordingly you should advise if you wish your personal details withheld in respect of these requests.
122. Please send all written representation on the proposal to East Renfrewshire Council no later than midnight on Friday 20 January 2017 via the Council's consultation website, or postal address for hard copies to East Renfrewshire Council, Education Department, Council Offices, 211 Main Street, Barrhead, East Renfrewshire, G78 1SY.
123. Education Scotland will be sent details of the consultation responses including issues raised at the public meeting and other relevant documentation. Education Scotland will then prepare and submit a report to the Director of Education within three weeks. In preparing their report Education Scotland may visit the affected schools.
124. The Director of Education will report the results of this consultation exercise including the report submitted by Education Scotland, to the Education Committee on 30 March 2017. The consultation report on the results will be available for public inspection at least 3 weeks before that date. The report will be available at all reasonable times at Council Offices at Eastwood Park, and Barrhead Main Street, in the affected schools, local libraries and published on the Council's website.
125. Reasonable requests for alternative forms of consultation papers or response documents will be accommodated wherever possible e.g. audio support or language translations. For this support please contact Mary Hart (0141 577 3435) or email Mary.Hart@eastrenfrewshire.gov.uk or write to the address in paragraph 122 above.
126. The final report and the decision taken by the Education Committee will be made available on the Council's website. Printed copies of the report will be made available on request to anyone who has responded to the consultative document.

Mhairi Shaw
Director of Education
November 2016

BLANK PAGE

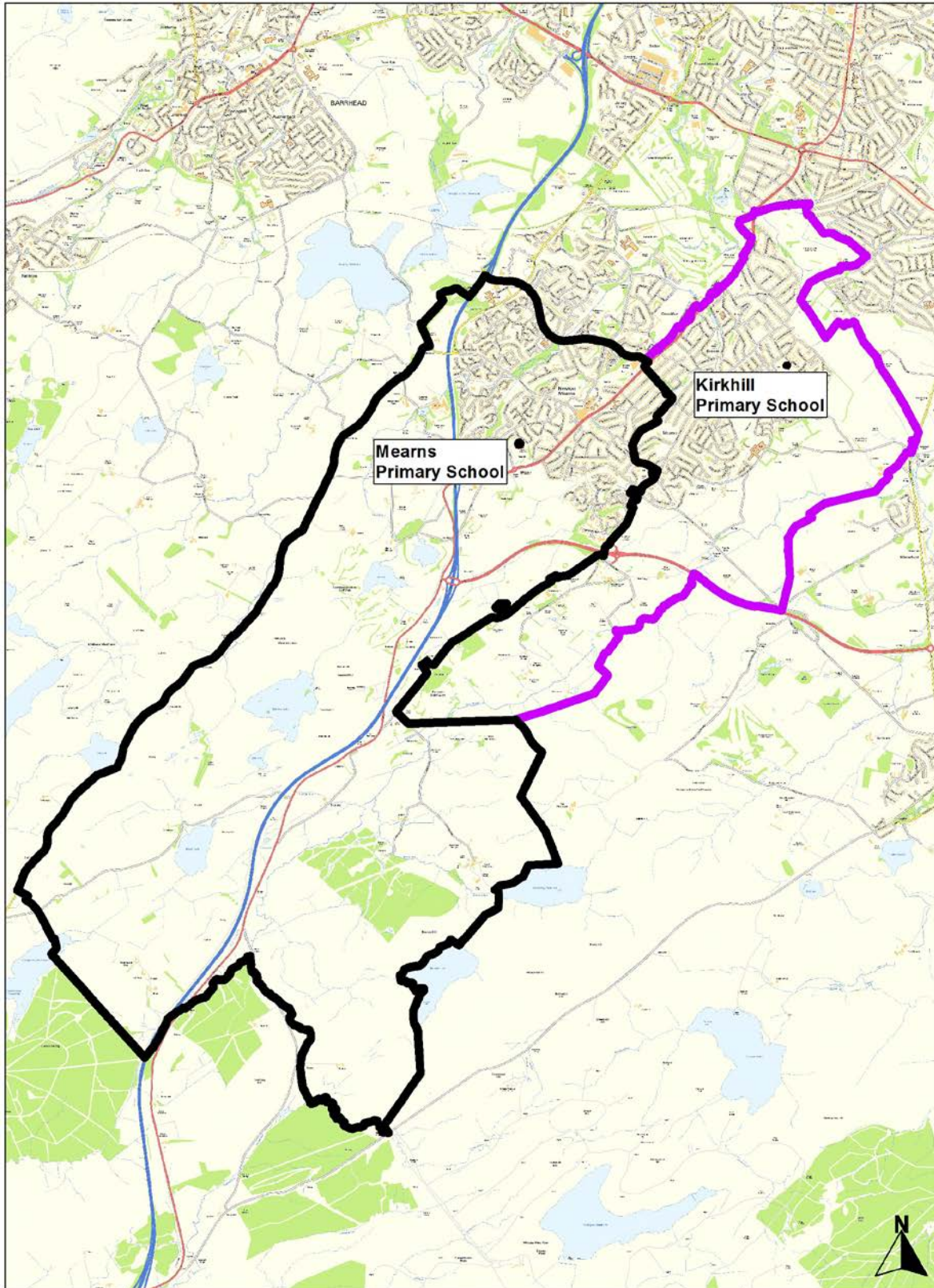
APPENDIX 1- Appendix A

**Location of Kirkhill and Mearns Primary Schools and
Eastwood and Mearns Castle High Schools**



Reproduced by permission of Ordnance Survey on behalf of HMSO. (C) Crown Copyright and database right 2016. All Rights Reserved. Ordnance Survey Licence number 100023382 2016, East Renfrewshire Council.

BLANK PAGE

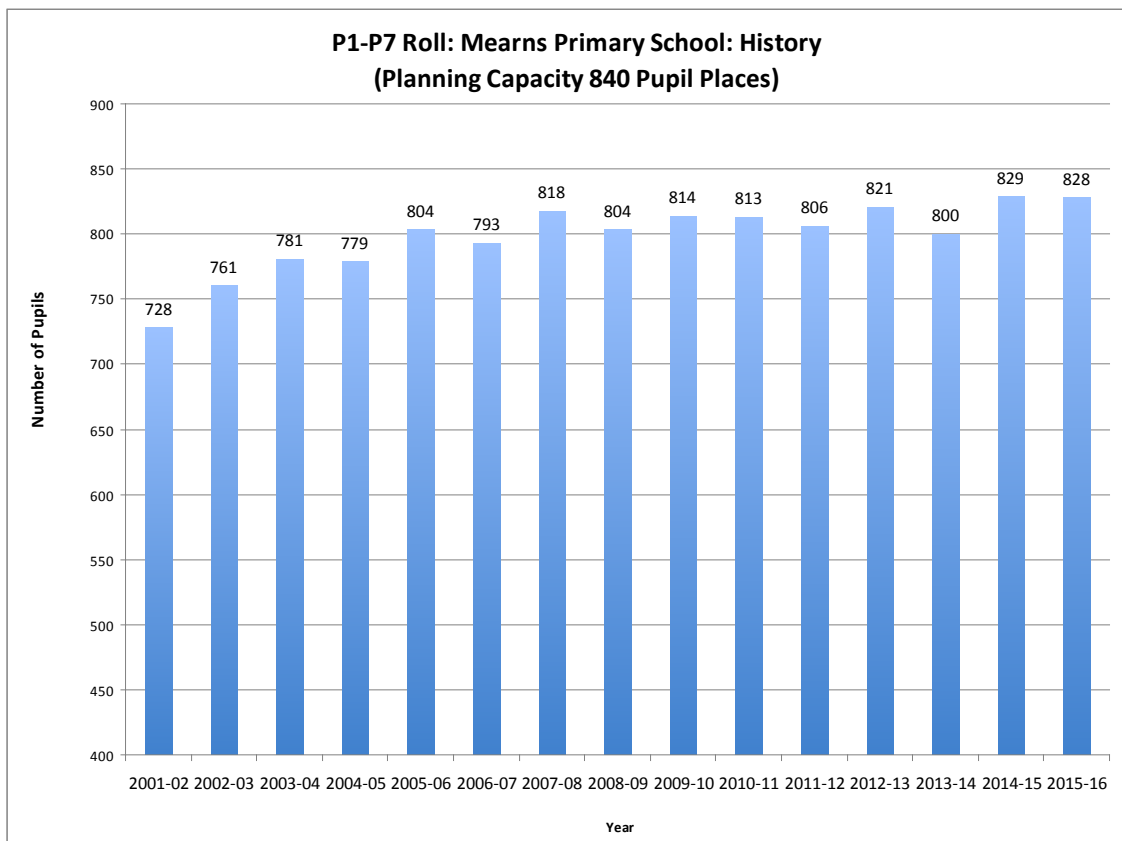
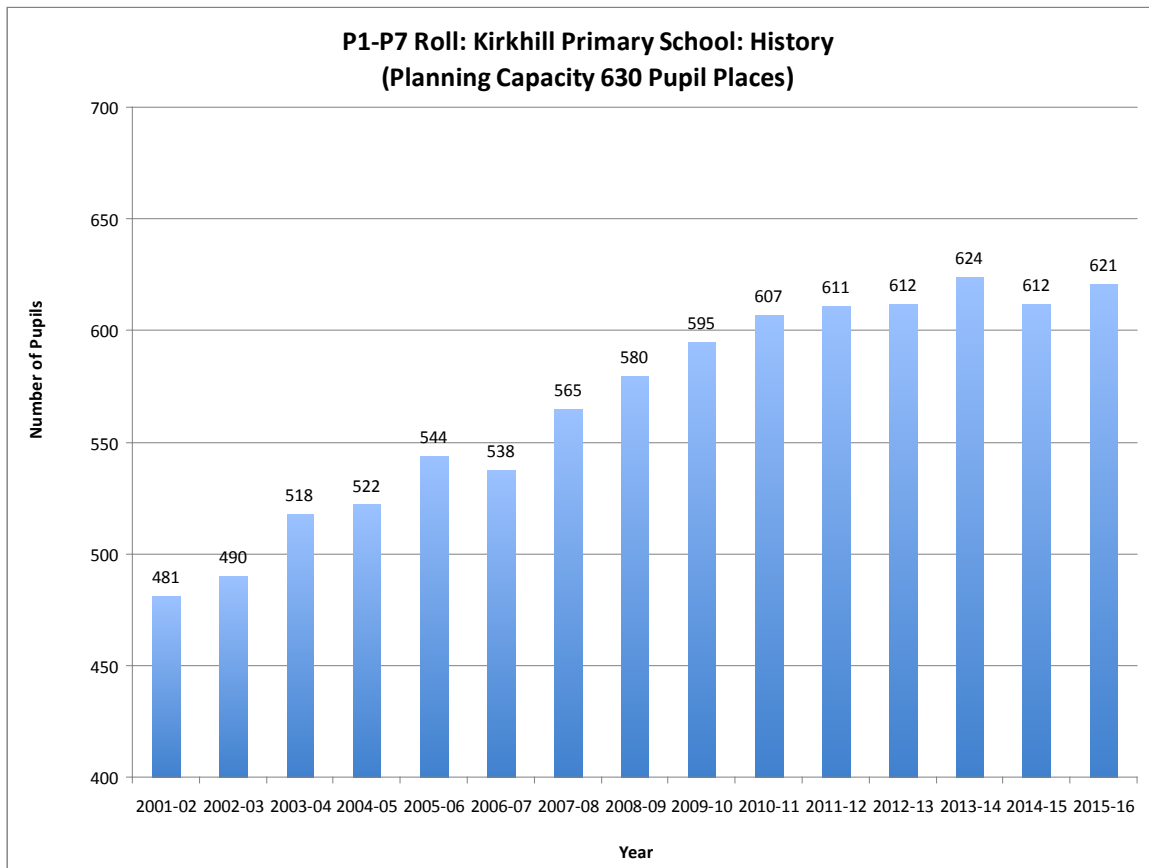
Current Delineated Catchment Areas for Kirkhill and Mearns Primary Schools

Reproduced by permission of Ordnance Survey on behalf of HMSO. (C) Crown Copyright and database right 2016. All Rights Reserved. Ordnance Survey Licence number 100023382 2016, East Renfrewshire Council.

A very small number of properties shown in these delineated areas have an option to attend a neighbouring school, similarly some properties out with the delineated areas may have the option to attend these schools. These are mostly farms. Details are available on request.

BLANK PAGE

APPENDIX 1- Appendix C



BLANK PAGE

Kirkhill Primary School: Roll Projection

		Total Planning Capacity						630		
		P1-Intake Capacity						90		
Rolls by Stage										
	P1	P2	P3	P4	P5	P6	P7	P1-P7 (Excluding Housing)	Pupils from New Housing	P1-P7 (Including Housing)
~Sep 2016	75	90	82	88	98	92	99	624	9	633
Aug 2017	78	75	90	82	88	98	92	603	17	620
Aug 2018	78	78	75	90	82	88	98	589	26	615
Aug 2019	78	78	78	75	90	82	88	569	34	603
Aug 2020	78	78	78	78	75	90	82	559	35	594
Aug 2021	78	78	78	78	78	75	90	555	35	590
Aug 2022	78	78	78	78	78	78	75	543	35	578

Notes

- ~ The September 2016 figures are pre the official September census.
- The projections take account of pupils expected from current known planned new residential development within East Renfrewshire. The anticipated additional pupils from new housing are not allocated by stage, but as a total for the school roll. The projected pupil numbers by stage will therefore be higher.
- The roll projection is undertaken to monitor demand and availability of places for local residents and does not reflect any available places that may subsequently be filled through for example future placing requests from outwith the local/Council area. It does not take account of inward migration during a school year, which is known to be around 15 pupils for the school (depending on availability of pupil places at a given stage at that time). Accordingly the projected number of pupils shown above will be further increased by inward pupil movement.
- There are approximately a further 12 additional units from current known planned new residential development beyond 2022, which would have very minor impact on school places.

BLANK PAGE

Mearns Primary School: Roll Projection

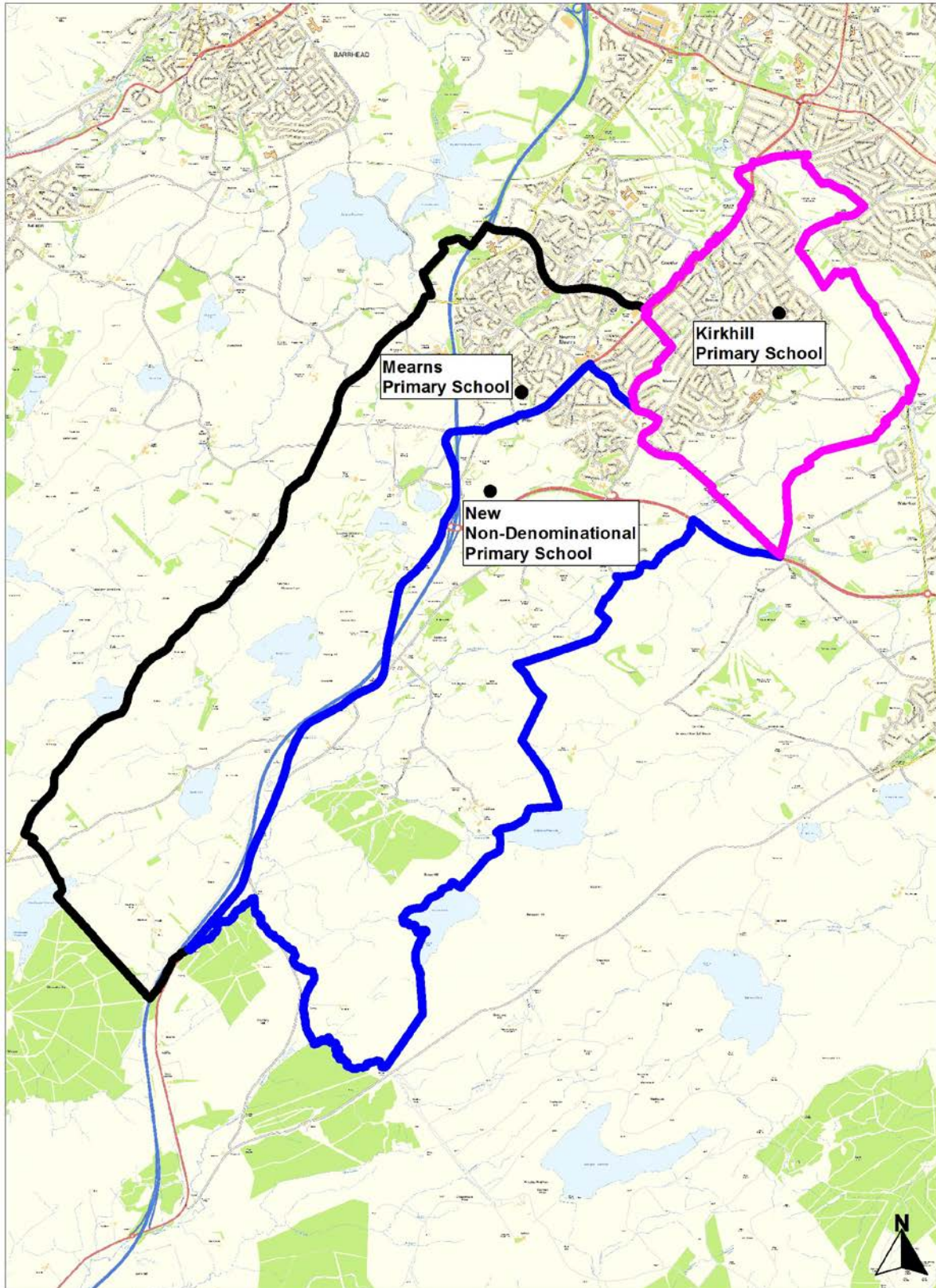
		Total Planning Capacity						840		
		P1-Intake Capacity						120		
Rolls by Stage										
	P1	P2	P3	P4	P5	P6	P7	P1-P7 (Excluding Housing)	Pupils from New Housing	P1-P7 (Including Housing)
~Sep 2016	112	115	118	119	129	112	127	832	6	838
Aug 2017	103	112	115	118	119	129	112	808	28	836
Aug 2018	103	103	112	115	118	119	129	799	49	848
Aug 2019	103	103	103	112	115	118	119	773	81	854
Aug 2020	103	103	103	103	112	115	118	757	113	870
Aug 2021	103	103	103	103	103	112	115	742	142	884
Aug 2022	103	103	103	103	103	103	112	730	142	872

Notes

- ~ The September 2016 figures are pre the official September census.
- The projections take account of pupils expected from current known planned new residential development within East Renfrewshire. The anticipated additional pupils from new housing are not allocated by stage, but as a total for the school roll. The projected pupil numbers by stage will therefore be higher.
- The roll projection is undertaken to monitor demand and availability of places for local residents and does not reflect any available places that may subsequently be filled through for example future placing requests from outwith the local/Council area. It does not take account of inward migration during a school year, which is known to be around 20 pupils for the school (depending on availability of pupil places at a given stage at that time). Accordingly the projected number of pupils shown above will be further increased by inward pupil movement.
- Pupil numbers will increase post 2022 as a result of approximately a further 620 additional units from current known planned new residential development beyond 2022. The phasing of this residential development is not yet specified by year, but over the period would result in approximately 140 additional pupils requiring a place in the school.

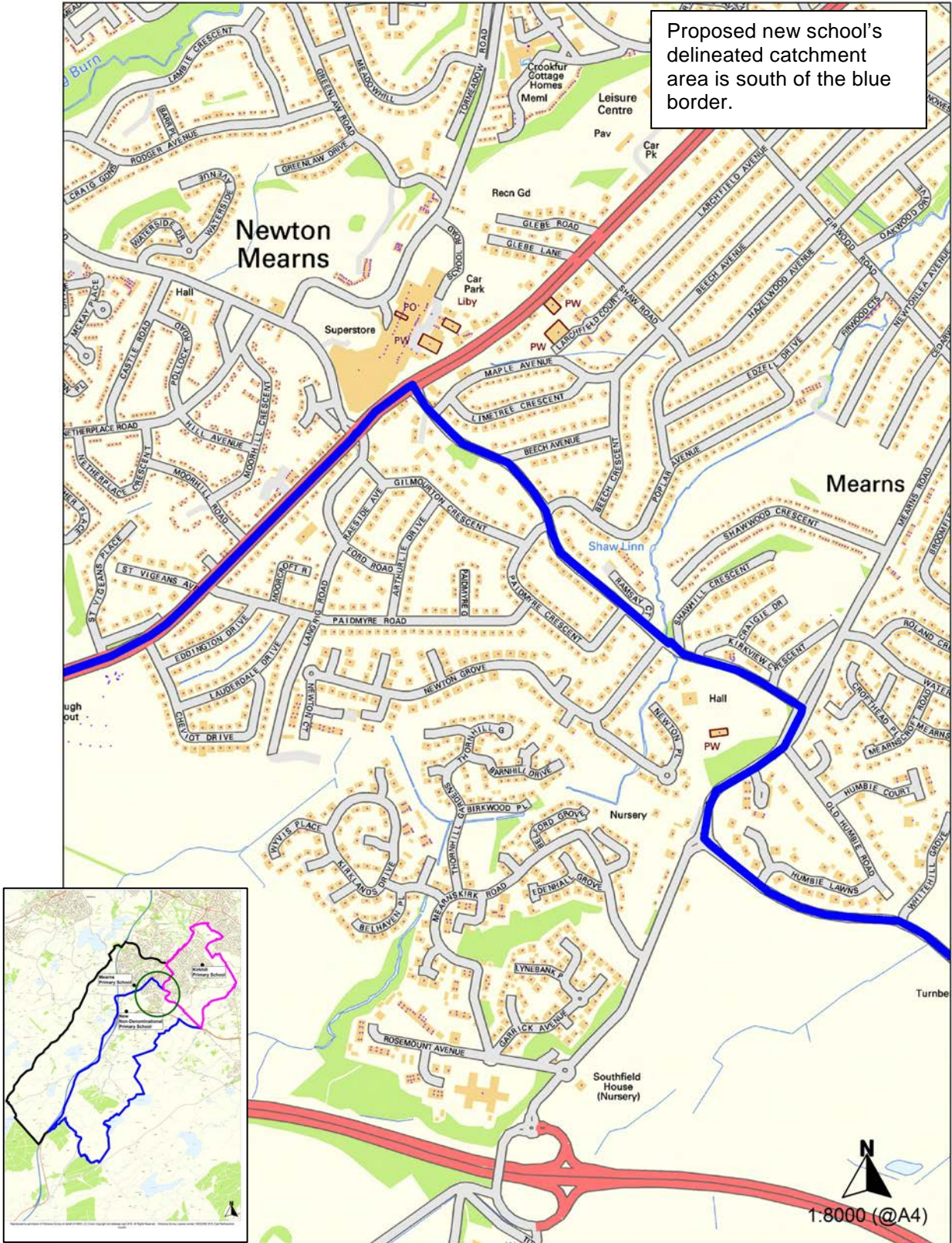
BLANK PAGE

**Proposed New Delineated Catchment Areas for Kirkhill Primary School, Mearns Primary School and Delineated Catchment Area for New Non-Denominational Primary School at Maidenhill, Newton Mearns
Effective for School Session 2019-20 and Beyond**



BLANK PAGE

Highlight of Parts of Proposed New Delineated Catchment Area for New Non-Denominational Primary School at Maidenhill, Newton Mearns Effective for School Session 2019-20 and Beyond



Reproduced by permission of Ordnance Survey on behalf of HMSO. (C) Crown Copyright and database right 2016. All Rights Reserved. Ordnance Survey Licence number 100023382 2016, East Renfrewshire Council.

BLANK PAGE

EAST RENFREWSHIRE COUNCIL : EDUCATION DEPARTMENT

**FUTURE NON-DENOMINATIONAL PRIMARY SCHOOL PROVISION IN NEWTON MEARN'S SOUTH AND
ESTABLISHMENT OF A NEW NON-DENOMINATIONAL PRIMARY SCHOOL AND NURSERY CLASS AT
MAIDENHILL: FROM SESSION 2019-20 AND BEYOND**

FORM FOR YOUR RESPONSE

ABOUT YOU

Name:

Address:

Post Code

 Tick the box if we should keep your name and address confidential

Please select all that apply and complete as appropriate:

- I am a Parent/Carer of a child/ children attending an *affected school(s)* as noted below.
(Carer means the responsible adult with whom the young person lives)
- Kirkhill Primary Mearns Primary Mearns Castle High
- My child/ children reside(s) in the delineated catchment area(s) of the school(s) attended above
- Early Learning & Childcare Facility in Newton Mearns Area, i.e. either Crookfur Nursery Class, Hazeldene Family Centre, Isobel Mair Family Centre, Mearns Primary Nursery Class; Calderwood Lodge Nursery Class; Partnership Provider in Newton Mearns Area: Belmont House, Broom, Elmwood, Kirktonholme@ Mearnswood, Orchard Park (Newton Mearns)
- Name(s) of my child(ren):
- I am a pupil at
- I am a member of staff at
- I am responding on behalf of a group or organisation.
Name of group/organisation
- I am related to a young person attending one of the *affected schools*
- I provide care to a young person attending one of the *affected schools*
- I reside within East Renfrewshire
- Other (*please specify*)

Please provide information to all sections. Should you not wish to specify some of the details in the ABOUT YOU section, we will still take your response into account.

WHAT YOU THINK (*tick only one box*)

- I agree with the proposal.
- I do not agree with the proposal.

PLEASE WRITE YOUR REASON(S)/ COMMENTS BELOW

The reason(s) I have for reaching my decision is/are:

Any other additional comment:

Signed

Send your reply to East Renfrewshire Council, via the online consultation website or post to Education Department, Council Offices, 211 Main Street, Barrhead, East Renfrewshire, G78 1SY, no later than midnight **Friday 20 January 2017.**

Pupil Consultation

On the

**Future Non-Denominational Primary
School Provision in Newton Mearns
South and Establishment of a New Non-
Denominational Primary School and
Nursery Class at Maidenhill from Session
2019-20 and Beyond**

Report to the Director of Education

**Prepared by:
Stuart Allison and Marie Kelly
External Consultants
January 2017**

BLANK PAGE

1. Process for Consultation with Pupils

- 1.1 East Renfrewshire Council Education Department undertook a consultation exercise on the proposal to establish a new non-denominational primary school and nursery class at Maidenhill from Session 2019-20 and beyond. The consultation was conducted over the period between 28 November 2016 and 20 January 2017.
- 1.2 As part of this process, the Council decided to consult with, and seek the views of pupils of each affected school. Consequently, Primary One to Primary Seven pupils in Kirkhill and Mearns Primary Schools and Secondary One to Secondary Six pupils in Mearns Castle High School were consulted.
- 1.3 Two independent Education Consultants were tasked by the Education Department of the Council to carry out the consultation with the stages of pupils identified above in accordance with the terms of the Schools (Consultation) (Scotland) Act 2010 and the amendments contained in the Children and Young People (Scotland) Act 2014.
- 1.4 The Education Department sent out a letter to the three Head Teachers to advise them of the appointment of independent consultants and the process for consultation with pupils.
- 1.5 As the new non-denominational school would be an associated primary of Mearns Castle High School and in accordance with the age of the pupils it was decided that the secondary pupils would receive a letter and a response form from the Director of Education offering them an opportunity to respond to the consultation (Appendix 4). The letter outlined the proposal, provided a link to the consultation document and included a response form. The letter also advised pupils that their participation was voluntary and if they wished they could respond online.

As part of the reporting process, Mearns Castle High School would receive feedback on the findings of the pupils of the school by means of an individual school report prepared by the consultants. Mearns Castle High School would have responsibility for sharing the report with all pupils within the school to provide feedback on the pupil views expressed.

- 1.6 In structuring the consultation process with primary pupils, the consultants agreed with the Education Department that engagement of all Primary One to Primary Seven pupils would be best achieved through the involvement of the Pupil Councils in the two affected schools to conduct the consultation exercise.
- 1.7 The following principles were applied in developing the primary consultation process:
- Each school's Pupil Council, supported by the consultants, should be given and take responsibility for managing the consultation exercise with pupils as best suited the structure for pupil voice within the school.
 - The time frame should be sufficient to allow meaningful engagement with Pupil Councils in order to involve and prepare them in planning and carrying out the consultation exercise. The consultants would provide background information about the proposal, advice and support for the Pupil Councils.
 - Pupil Councils would put in place mechanisms to provide an opportunity for all affected pupils to become informed and share their views.
 - There would be an appropriate timeframe to ensure that all pupils would have a reasonable and fair opportunity to participate in the consultation.
 - Participation by pupils in the consultation exercise would be voluntary and not mandatory.
 - Pupils would also be advised that alternatively they could respond using the ERC on-line consultation or complete a hard paper copy of the response form and send it to the Education Department.
 - Pupil Councils should be supported by an identified member of staff to make the necessary arrangements within the school for the consultation exercise.
 - It was emphasised that school staff should not influence the views of Pupil Council members or pupils within the school.

- In addition, the consultants would meet the Pupil Councils, as focus groups, to allow them to give verbal feedback on the consultation process and listen to and record the oral views of any other pupils who wished to make their views known.
- As part of the reporting process, each Pupil Council would receive feedback on the findings of the pupils of the school with an individual school report being provided by the consultants.
- The Pupil Council would have responsibility to share the individual school reports with all pupils within the school.

1.8 In line with the four capacities that underpin *Curriculum for Excellence*, it was envisaged that Pupil Councils would have a central role in the process and that they would ensure that pupils would perceive the consultation as fair and without a pre-determined conclusion.

1.9 In order to support the primary Pupil Council members to deliver consistent and accurate information across all of the affected schools, the consultants prepared a standard PowerPoint presentation to inform the two Pupil Councils about the key aspects of the proposal and to support them deliver the key information to their peers (Appendix 1). The presentation also included advice for the Pupil Councils about how to carry out the consultation with their peers. Information was also provided on how the Pupil Councils' responses would be reported.

Each primary Pupil Council was then provided with a similar presentation to use at pupil assemblies. The Pupil Councils were then well prepared to take on responsibility to deliver this PowerPoint presentation to pupils within their school explaining the proposal and how pupils could respond to the consultation if they so wished (Appendix 2).

1.10 The consultants devised pupil response forms for P1-P3 and P4-P7 pupils in both primary schools (Appendix 3).

1.11 The consultants visited each primary school to:

- Meet with head teachers and the members of staff with responsibility for the Pupil Council to explain the process and makes dates for further visits in relation to the pupil consultation;
- Meet with the Pupil Council, deliver a presentation and explain the tasks and activities they were being asked to undertake;
- Provide each Pupil Council with a PowerPoint presentation;
- Issue pupil response forms and a locked ballot box for completed response forms; and
- Answer any questions that members of the Pupil Council might have.

1.12 The consultants returned to both primary schools to meet with the Pupil Councils to receive feedback on the consultation process and to hear oral views of any other pupils who wished to express them.

1.13 The consultants collected the locked ballot boxes from all three schools.

1.14 Following the conclusion of the consultation, the pupils' responses to the consultation would be collated and analysed by the consultants and a written report would be prepared for the Director of Education.

An individual report was prepared for all schools to report the findings of the pupils. The schools would have responsibility for sharing the report with all pupils within the school to provide feedback on the views expressed. This report would include information on the:

- Follow-up visit to the primary schools by the consultants including the consultation methodology, questions/comments made to the Pupil Council representatives during the presentation and the oral views expressed by pupils to the consultants;
- The results of the ballot by class and stage / year group;
- The overall results; and
- The written responses on the ballot forms by stage / year group.

2. Outcome of the Schools' Consultation Exercise

Briefing and Follow-up Meetings with Primary Pupil Councils

- 2.1** The briefing presentations to the primary Pupil Council representatives were very successful. Pupils were enthusiastic and looked forward to the prospect of their leadership of the consultation exercise. They referred to their previous experience in managing a consultation on admission arrangements. Both pupils and staff were aware of the need for meaningful engagement with pupils in this consultation exercise.

The follow-up meetings to the primary schools provided the Pupil Council representatives with a very good opportunity to inform the consultants in detail about their consultation process and also to share questions / comments made by pupils during their presentations.

Consultation Methodology

- 2.2** Primary Pupil Councils carried out the consultation exercise by using appropriate organisational structures within their schools.

In Kirkhill Primary School, Pupil Council members gave a PowerPoint presentation to pupils at as follows:

- P1 Assembly led by P1 Pupil Council member supported by a P7 Pupil Council member;
- P2 Assembly led by P2 Pupil Council member supported by a P4 Pupil Council member;
- P3 Assembly led by P3 Pupil Council member supported by a P4 Pupil Council member;
- P5 Assembly led by P5 Pupil Council member supported by a P7 Pupil Council member;
- P4, P6 and P7 Assemblies led by a Pupil Council member from their own stage.

In Mearns Primary School, Pupil Council members gave a PowerPoint presentation to pupils as follows:

- P5 Pupil Council representatives to P1 and P2 Assembly;
- P6 Pupil Council representatives to P3 to P5 Assembly;
- P7 Pupil Council representatives to P6 and P7 Assembly.

Primary schools made very good use of the materials prepared by the consultants. In Kirkhill Primary School, the PowerPoint presentation to pupils had been simplified further by changing about two words to aid understanding e.g. collated to gathered. The pupils also reported they found the slides with the maps to be very helpful. In Mearns Primary School, the PowerPoint presentation to P1 to P5 pupils had been simplified further to include more graphics to aid understanding.

The Pupil Council members of both primary schools reported that they were well supported and were confident in their delivery.

In Mearns Castle High School all pupils received a copy of the letter and response form from the Director of Education (Appendix 4). In addition, the school shared the information about the consultation exercise with the whole school through the pupil newsletter, school website, plasma screens and on each of the pupil information boards.

The approaches used by the schools were robust in obtaining pupils' views.

Written Responses

- 2.3** The written responses of pupils to the Consultation Exercise are collated in Appendix 5. This appendix details the reasons / comments provided by the pupils on the ballot forms for the schools concerned.

Primary Pupils' Verbal Views

- 2.4 Appendix 6 details the verbal views expressed by primary pupils for each school to the consultants on their return to the schools.

Overall Conclusions

- 2.5 Appendix 7 provides a detailed stage by stage analysis from each of the three schools. In the primary sector there were 150 pupils who chose not to express a view on the proposal and a further 23 pupils recorded that the proposal was neither a good nor bad idea which represented 11.9% of all the primary pupils consulted. In the secondary sector 1239 pupils chose not to express a view on the proposal which represents 99% of all those consulted.

A summary table of pupil responses for each school is provided below.

Pupils	Total Agree	% Agree	Total Disagree	% Disagree
Kirkhill PS	358	68%	166	32%
Mearns PS	355	46%	411	54%
Mearns Castle HS	7	78%	2	22%
All Pupils	720	55%	579	45%

The percentage of Kirkhill Primary pupils in Primary 1 to Primary 7 in favour of the proposal was 68%. The majority of Kirkhill Primary pupils agreed with the proposal.

The percentage of Mearns Primary pupils in Primary 1 to Primary 7 not in favour of the proposal was 54%. The majority of Mearns Primary pupils disagreed with the proposal.

The percentage of pupils in Mearns Castle High School Secondary 1 to Secondary 6 in favour of the proposal was 78%. Most of Mearns Castle High School pupils who responded agreed with the proposal.

The overall percentage of pupils agreeing with the proposal was 55%. Overall the majority of pupils agreed with the proposal.

A summary table of school responses is provided below.


Schools	Total Agree	% Agree	Total Disagree	% Disagree
Primary	713	55%	577	45%
Secondary	7	78%	2	22%
All Schools	720	55%	579	45%

Overall the majority of schools consulted agreed with the proposal.

BLANK PAGE

Appendix 1 – Primary Pupil Councils’ PowerPoint Presentation

Pupil Consultation Exercise






Primary Pupil Council Meetings
December 2016

What is this exercise about?

- It is a consultation exercise to find out the views of pupils about East Renfrewshire Council’s proposal:
 - Concerning the future non-denominational primary school provision in Newton Mearns south;
 - To build a new non-denominational primary school and to also have a nursery class at Maidenhill from session 2019-20.

Schools Affected

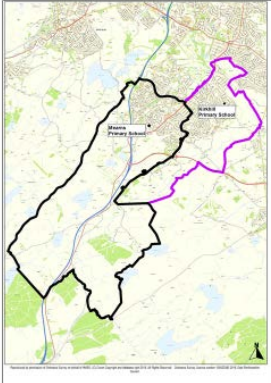
- The schools affected by the proposal are:
 - Kirkhill Primary; 
 - Mearns Primary and Nursery Class; 
 - Mearns Castle High School. 

Proposal for Consultation

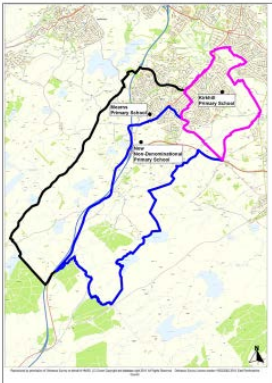
- Build a new 2-class at each stage primary school with 120 place nursery class at Maidenhill for session 2019-20.
- Establish a catchment area for the new school.
 - A large number of new houses will be built in Newton Mearns at Maidenhill and Malletsheugh.
 - The new school would be for the additional new housing to be built.
 - The new school would have a nursery class to meet the increased need for places for 3 and 4 year olds in the area.

Proposal for Consultation

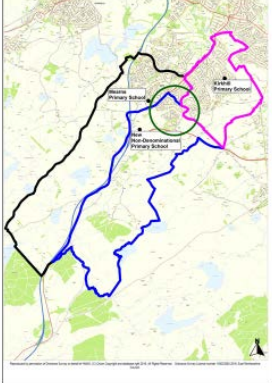
- Adjust the catchment areas of Kirkhill and Mearns primary schools.
 - The new school would also take in some existing addresses in nearby parts of the Kirkhill and Mearns catchment areas.
 - Children living in the newly defined catchment area for the new school, enrolled by the end of June 2019 and attending Kirkhill or Mearns Primary would have the choice of transferring to the new school or remaining where they are.
 - Once the new school is open in August 2019, any new P1s and pupils moving into its defined catchment area would attend the new school.



Current catchment areas for Kirkhill and Mearns Primary Schools



Proposed new catchment areas for Kirkhill Primary, Mearns Primary and the new Primary at Maidenhill



Parts of the proposed new catchment area for the Primary School at Maidenhill

Proposal for Consultation

- The new non-denominational school would be an associated primary to Mearns Castle High School.
 - Mearns Castle High School's catchment areas would **not** change under the proposal.
 - There are sufficient places in the high school to meet the number of additional pupils.
- The name of the new school would be Maidenhill Primary School and Nursery Class.

Why do we need to know what primary pupils think?

Kirkhill Primary



- Kirkhill Primary opened in 1960.
- The school has grown to 3 classes at each stage.
- There are 619 pupils in the school which means it is 99% occupied.
- The pupil numbers will continue to increase as a result of the planned house building.
- It is not possible to extend Kirkhill Primary further.

Why do we need to know what primary pupils think?

Mearns Primary and Nursery Class



- Mearns Primary opened in 2001.
- The school has 4 classes at each stage and a 60:60 place nursery class.
- There are 836 pupils in the school which means it is 99% occupied.
- The pupil roll will in the future exceed the places available as a result of the planned house building.
- It is not possible to extend Mearns Primary.

Why are we here today?

- East Renfrewshire Council has issued a Consultation Document with the proposals we have outlined.
- This pupil consultation exercise is about letting you:
 - Know about the proposal;
 - Think about the proposal; and
 - Have say as to whether you agree or do not agree with the proposal.
- Participation is voluntary – no one has to take part if they do not want to.

How are we going to do the pupil consultation?

- We need the Pupil Council to work with us to seek the views of P1 to P7 pupils across the school.
- Following on from today's meeting we would like Pupil Council representatives to take the main points of this consultation to pupils and give them an opportunity to discuss them.



How are we going to do the pupil consultation?

- Pupils will then have time to think about their response. Then, if they wish they can:
 - Make their views known to you, the Pupil Council;
 - or
 - Complete a pupil response form and post it in a locked ballot box;
 - or
 - Go on-line and complete an electronic response form.



How are we going to do the pupil consultation?

- The consultants will return to the school to:
 - Meet with the Pupil Council to receive views about the consultation process; and
 - Meet with, listen to and record the views of any other pupils who wish to express them.
 - Collect the ballot box so we can analyse the contents.



How are you going to do the pupil consultation?

- When you speak to the pupils you will need to communicate:
 - What the consultation is about;
 - Make clear the voluntary nature of involvement. Anyone can choose not to participate or opt out at any point;
 - Give the main points surrounding the proposal (the presentation today).



How are you going to do the pupil consultation?

- When you speak to the pupils you will need to communicate that the views expressed will:
 - Be treated as anonymous;
 - Nobody will know the names of anyone who has responded.
- Spoken views will be noted and reported back to the consultants.



How are you going to do the pupil consultation?

- When you speak to the pupils you will need to:
 - Give out pupil response forms to anyone who wants one;
 - Let the pupils know that they complete their response form and place it in the locked ballot box; **or**
 - Post the response form to the Education Department (teachers will help with this).

How are you going to do the pupil consultation?

- When you speak to the pupils you will also need to:
 - Let the pupils know they can alternatively make their views known by going on-line and completing an electronic response form; **or**
 - Complete a paper copy of the electronic response form and post it to the Education Department.



How are you going to do the pupil consultation?

- When you speak to the pupils you will also need to let them know date and time when the consultants will return to the school to:
 - Meet with the Pupil Council;
 - Meet with, listen to and record the views of any pupils who wish to express them;
 - Collect the ballot box.



P1-P3 Response Form

EAST RENFREWSHIRE COUNCIL, EDUCATION DEPARTMENT
 PUPIL P1-P3 RESPONSE FORM
 About You
 Name:
 Class:
 Please draw a smiley face on the back of the form if you are happy to give your views.
 What to do
 Add a smile on the back of the form if you are happy.
 Add a sad face on the back of the form if you are not happy.
 Please give this to your school's Pupil Council or give it to your class teacher.

- Let's look at the response form for P1-P3 pupils.
- Completion of the response form is voluntary.

P4-P7 Response Form

EAST RENFREWSHIRE COUNCIL, EDUCATION DEPARTMENT
 PUPIL P4-P7 RESPONSE FORM
 What to do
 Add a smile on the back of the form if you are happy.
 Add a sad face on the back of the form if you are not happy.
 Please give this to your school's Pupil Council or give it to your class teacher.

- Let's look at the response form for P4-P7 pupils.
- Completion of the response form is voluntary.

How will pupils' views be used?

- Pupils' responses to the consultation exercise will be collated and analysed (put together) by the consultants.
- A report on the responses will be written and passed to East Renfrewshire Council.
- The Director of Education will report on the results of the consultation to the Education Committee in March 2017.
- A report on the responses will be written by the consultants for each school.





Appendix 2 – Primary Pupil Councils' PowerPoint Presentation to Assemblies

Pupil Consultation Exercise



Pupil Assembly
December 2016

Pupil Consultation

The Pupil Council has been asked to assist in seeking the views of P1 to P7 pupils across the school about a proposal from East Renfrewshire Council.






What pupils are being consulted about?

It is a consultation exercise to find out the views of pupils about East Renfrewshire Council's proposal:

- Concerning the future non-denominational primary school provision in Newton Mearns south;
- To build a new non-denominational primary school and to also have a nursery class at Maidenhill from session 2019-20.

Schools Affected

■ The schools affected by the proposal are:

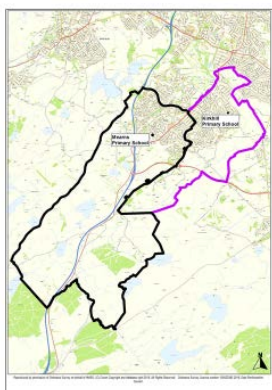
- Kirkhill Primary; 
- Mearns Primary and Nursery Class; 
- Mearns Castle High School. 

Proposal for Consultation

- Build a new 2-class at each stage primary school with 120 place nursery class at Maidenhill for session 2019-20.
- Establish a catchment area for the new school.
 - A large number of new houses will be built in Newton Mearns at Maidenhill and Malletsheugh.
 - The new school would be for the additional new housing to be built.
 - The new school would have a nursery class to meet the increased need for places for 3 and 4 year olds in the area.

Proposal for Consultation

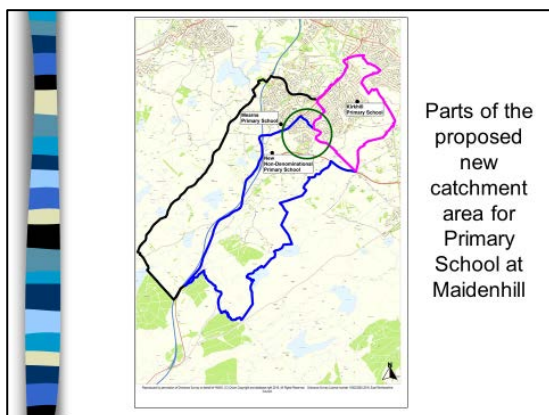
- Adjust the catchment areas of Kirkhill and Mearns primary schools.
 - The new school would also take in some existing addresses in nearby parts of the Kirkhill and Mearns catchment areas.
 - Children living in the newly defined catchment area for the new school, enrolled by the end of June 2019 and attending Kirkhill or Mearns Primary would have the choice of transferring to the new school or remaining where they are.
 - Once the new school is open in August 2019, any new P1s and pupils moving into its defined catchment area would attend the new school.



Current
catchment
areas for
Kirkhill and
Mearns
Primary
Schools



Proposed
new
catchment
areas for
Kirkhill
Primary,
Mearns
Primary and
the new
Primary at
Maidenhill



Proposal for Consultation

- The new non-denominational school would be an associated primary to Mearns Castle High School.
 - Mearns Castle High School's catchment areas would **not** change under the proposal.
 - There are sufficient places in the high school to meet the number of additional pupils.
- The name of the new school would be Maidenhill Primary School and Nursery Class.

Why we need to consult?

Kirkhill Primary



- Kirkhill Primary opened in 1960.
- The school has grown to 3 classes at each stage.
- There are 619 pupils in the school which means it is 99% occupied.
- The pupil numbers will continue to increase as a result of the planned house building.
- It is not possible to extend Kirkhill Primary further.

Why we need to consult?

Mearns Primary and Nursery Class



- Mearns Primary opened in 2001.
- The school has 4 classes at each stage and a 60:60 place nursery class.
- There are 836 pupils in the school which means it is 99% occupied.
- The pupil roll will in the future exceed the places available as a result of the planned house building.
- It is not possible to extend Mearns Primary.

Purpose of this assembly

- East Renfrewshire Council has issued a Consultation Document with the proposals outlined.
- This pupil consultation exercise is about letting you:
 - Know about the proposal;
 - Think about the proposal; and
 - Have say as to whether you agree or do not agree with the proposal.
- Participation is voluntary – no one has to take part if they do not want to.

Purpose of this assembly

- Pupils will then have time to think about their response. Then, if they wish they can:
 - Make their views known to the Pupil Council; **or**
 - Complete a pupil response form and post it in a locked ballot box; **or**
 - Go on-line and complete an electronic response form; **or**
 - Post the response form to the Education Department (teachers will help with this).



What pupils need to know

- Making a response is voluntary. If you don't want to respond you do not have to.
- Spoken views will be noted and reported back by the Pupil Council to consultants working out the results of the ballot for the Education Department.
- Nobody will know the names of anyone who has responded.



P1-P3 Response Form

BY PUPILS FOR PUPILS
Mearns Primary School

About You
Name:
Class:

Proposed: Build a new non-denominational primary school and nursery class at Maidenhill (see section 20/21).

What to do:
Add a tick in the column if you **AGREE** or **DISAGREE**.
Add a tick in the column if you **AGREE** or **DISAGREE**.

Please give us your views. Council of Govt will help you to give your views. Alternatively, you may tell your teacher for the Govt.



- Let's look at the response form for P1-P3 pupils.
- Completion of the response form is voluntary.

P4-P7 Response Form

- Let's look at the response form for P4-P7 pupils.
- Completion of the response form is voluntary.


After the Ballot

- The consultants will return to the school to:
 - Meet with the Pupil Council
 - Meet with, listen to and record the views of any pupils who wish to express them;
 - Collect the ballot box.

How will pupils' views be used?

- Pupils' responses to the consultation exercise will be collated and analysed (put together) by the consultants.
- A report on the responses will be written and passed to East Renfrewshire Council.
- The Director of Education will report on the results of the consultation to the Education Committee in March 2017.
- A report on the responses will be written by the consultants for each school.



BLANK PAGE

Appendix 3 – P1-3 and P4-7 Response Forms for Both Primary Schools

EAST RENFREWSHIRE COUNCIL: EDUCATION DEPARTMENT

PRIMARY P1-3 RESPONSE FORM

About You

Name:

Class:

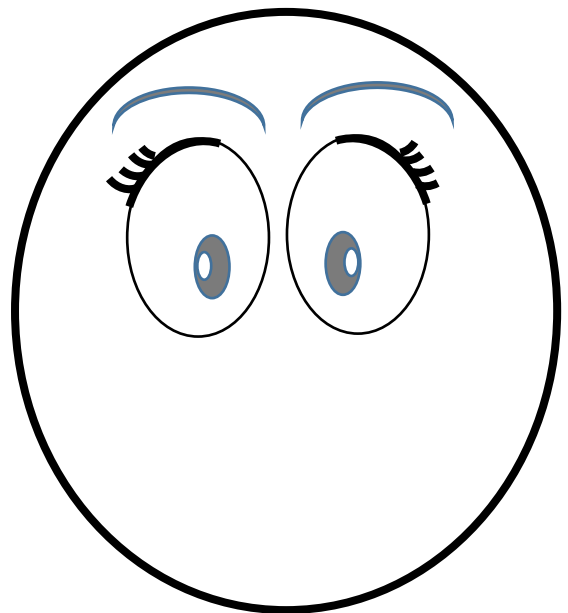
Proposal: Build a new non-denominational primary school and nursery class at Maidenhill from session 2019-20.

What to do

Add a smile on the picture if
this is a good idea



Add a sad face on the picture if
this is a bad idea



Please give this to your school's Pupil Council or post your reply into the ballot box provided. Alternatively, your teacher will help you on how your response can be posted.

BLANK PAGE

EAST RENFREWSHIRE COUNCIL: EDUCATION DEPARTMENT

PRIMARY 4-7 RESPONSE FORM

About you

Name:

Class:

Address:

Post Code:

PROPOSAL: BUILD A NEW NON-DENOMINATIONAL PRIMARY SCHOOL AND NURSERY CLASS AT MAIDENHILL FROM SESSION 2019-20.

What do you think? (*Tick only one box*)

- I agree with the proposal.
- I do not agree with the proposal.

Write your reason(s) / comments below.

Tell us why. If you need more space, you can write more on the back of this sheet or use more paper.

Signed:

Please give this to your school's Pupil Council or post your reply into the ballot box provided. Alternatively you can post this to East Renfrewshire Council, Education Department, Council Offices, 211 Main Street, Barrhead, East Renfrewshire, G78 1SY, no later than **Friday 20 January 2017.**

Appendix 4 – Letter and Response Form to Pupils of Mearns Castle High School

Our Ref: MS/MH
Your Ref:
Contact: Mhairi Shaw
Tel: 0141 577 3435
Fax: 0141 577 3276
Email: mary.hart@eastrenfrewshire.gov.uk
Date: 28 November 2016

Education Department
Council Offices
211 Main Street
Barrhead
G78 1SY

Dear Pupil

Future Non-Denominational Primary School Provision in Newton Mearns South and Establishment of a New Non-Denominational Primary School and Nursery Class at Maidenhill: From Session 2019-20 and Beyond

As you will know Mearns Castle High School has four associated primary schools providing non-denominational places in the Newton Mearns and Eaglesham areas of East Renfrewshire. The four schools are Calderwood Lodge, Eaglesham, Kirkhill Primary Schools and part of Mearns Primary School catchment.

East Renfrewshire Education Department is consulting about establishing a new non-denominational primary school and nursery class to serve the Newton Mearns area that will open in August 2019. It is proposed that the new school would be called Maidenhill Primary School and Nursery Class. We are keen to hear your views on this proposal.

Mearns and Kirkhill Primary schools currently provide non-denominational primary school places in the Newton Mearns South area. The schools are currently very close to being full and as a result of house building in the area it is anticipated that the pupil rolls will very soon exceed the places available. It is not possible to extend Mearns and Kirkhill primary schools to meet the demand for additional catchment places. Therefore, it is proposed to amend the existing Mearns and Kirkhill catchment areas and establish a newly defined catchment for the new non-denominational primary school. The existing Mearns and Kirkhill catchments would then be served by three non-denominational primary schools, thereby increasing the pupil places that are available.

As well as increasing the non-denominational primary pupil places, the new school would include early learning and childcare provision.

The new non-denominational primary school would have a number of benefits including providing sufficient non-denominational places for the catchment and increasing the number of early learning and childcare places in the area.

There would be no change to the admission arrangements or the catchment area for Mearns Castle High School. Although there is a need to increase primary non-denominational places in the area, there are sufficient places at Mearns Castle to meet catchment demand. If the proposal is accepted Mearns Castle would have an additional associated primary school along with the four it currently has.

If you want to read the full details of the proposal it can be viewed and downloaded from the Council website at www.eastrenfrewshire.gov.uk

A response form is included with this letter. All responses need to be made by midnight on Friday 20 January 2017. To assist with keeping responses confidential a sealed ballot box will be situated at the school office for you to leave your response. If you prefer you may respond online at the council's website <http://www.eastrenfrewshire.gov.uk/schoolconsultation>

As Director, I will report the results of this consultation to East Renfrewshire's Education Committee on 30 March 2017. The consultation results report will be available on the Council's website at least 3 weeks before that date.

I would welcome the views of interested parties to this consultation and would value your comments should you wish to respond. Please note that this is entirely voluntary.

Yours sincerely

A handwritten signature in purple ink that reads "Mhairi Shaw". The signature is written in a cursive style with a large, sweeping flourish at the end.

Mhairi Shaw
Director of Education

EAST RENFREWSHIRE COUNCIL : EDUCATION DEPARTMENT

Future Non-Denominational Primary School Provision in Newton Mearns South and Establishment of a New Non-Denominational Primary School and Nursery Class at Maidenhill: from Session 2019-20 and Beyond**MEARNS CASTLE HIGH SCHOOL PUPIL'S RESPONSE****ABOUT YOU**

Name:

Address:

Post Code

Stage:

 Tick the box if we should keep your name and address confidential**WHAT YOU THINK** (*tick only one box*) I agree with the proposal. I do not agree with the proposal.**YOUR COMMENTS ON THE PROPOSAL** (*tick only one box*) I have no additional comment to make My comments are written below Signed

Post your response in the confidential box at the school office or send your reply to East Renfrewshire Council, Education Department, Council Offices, 211 Main Street, Barrhead, East Renfrewshire, G78 1SY, no later than midnight **Friday 20 January 2017**

PLEASE WRITE YOUR COMMENTS BELOW

The reason(s) I have for reaching my decision is/are:

BLANK PAGE

Appendix 5 – Pupils’ Written Responses on Ballot Forms

Kirkhill Primary School – Written Responses on the Ballot Forms by Stage

There were no written responses on the ballot forms for all of the P1, P2 and P3 classes. A few children recorded both reasons for agreeing and disagreeing with the proposal and these reasons are recorded in the written responses below.

Stage	Agree	No of Times	Disagree	No of Times
P4	If there is a new school it would be less crowded in the schools outside the area / Everyone will have more space	13	I don't think we should because the cars could come down our road and traffic jams could happen.	1
	We need more schools in Newton Mearns because if don't have enough schools then some children won't get a school to go to and also we need schools for education so that more people can learn	12	I will lose my friends (maybe) and it will take up more space.	1
	Because my friends live in the area of Kirkhill	1	Because the new school will take up too much room and Kirkhill won't have any pupils.	1
	Everyone has the right to go to a school / When there are more boys and girls there is a space in Maidenhill Primary School.	1	I don't like the idea because I don't want everyone to go away and lose a bit of Kirkhill.	1
	How much people can go?	1	I don't need to tell you anything.	1
	I like it because it's a nice idea.	1		
	Yes there should be a new school.	1		
	Because my friends live in the area of Kirkhill.	1		

Stage	Agree	No of Times	Disagree	No of Times
P5	If there is not another school built and all the other schools are full where will all the new kids and babies go?	14	I voted no because if people leave it's probably 25/33 people in each class.	1
	Because some people might not get a school so it's a good idea to make a new one.	4	You could lose your friends if they move school.	1
	Because it seems right and is a good decision.	1	I like Kirkhill being nice and busy and I would hate to see some of the pupils go to a new school. Our school is good but what happens if someone is 2 and are coming in to school in 2019 – that means they will have to go to the other school but what happens if they are already signed in and they have a sister in P3 will they have to leave. I just don't think it's fair.	1
	Once the new school is built we can't keep building on the fields. We have to look after the environment.	1	Because I like my school and I would like to in my own school.	1
I do not want this school to be around!			1	

Stage	Agree	No of Times	Disagree	No of Times
P6	Kirkhill/Mearns are running out of space and soon neither of them will have a space to bring in more pupils so this is why we need a new school	16	I get your point but it cuts off quite a damaging part of the Kirkhill catchment area even if you think it does not and upsets me quite a lot.	1
	Some people may not get to a school near them and the school other people have to go to may be far away.	1	It will pollute the area even more due to building.	1
	As long as not much changes for me and my family and friends and I can just go to high school meeting friends from this new school if it does get built.	1		
	It is a shame all the green land is being built on but I think it is necessary for a new school so that all pupils have a school to go to.	1		
	A new school is a good idea because then no one will be forced to leave or join a school and it will be more comfortable.	1		
	I agree because there would be lots of children not going to school.	1		

Stage	Agree	No of Times	Disagree	No of Times
P7	Mearns Primary School and Kirkhill Primary school are 99% full, so building a new school will lower the numbers and let new families go to school easily instead of having a waiting list. Younger children will have more space in the classroom and therefore easier for them to learn.	20	Because all the schools are full as they can be! Stop building houses so we don't have to do this so we don't have the problem?	2
	This is a good idea because then more children will get to have an education and learn.	3	Less pupils coming to Kirkhill and Mearns Primary. You can also lose staff too.	2
	I don't mind if you build the new school.	3	Because the new school across from Mearns Castle High School could be a non-denominational – that means there is no reason to build a second school and our catchment won't have to change!	1
	The council should build a new school but make it very big so if they build even more houses there is enough space for kids to go to schools.	1	Schools attract families so if you add more school more people will come and eventually it will be full and the streets are already busy like the way to Mearns Castle High School and another school is opening beside it so you always run late. .Newton Mearns is too full and more people coming will cause an overload.	1
	I want all the boys and girls to be able to go to a school that they want to with plenty of choice. It might affect my sibling(s) so I want them to get into a school near our house.	1	If someone has a little brother or sister and the older person goes for example Kirkhill and the sibling has to go to Maidenhill Primary it wouldn't be very comfortable for the parent or guardian.	1
	I agree but I don't like the idea of MCHS being even more crowded as the traffic is really bad now so the idea of it getting worse I don't like.	1	I don't want a new school because I don't want it to affect Kirkhill.	1
			I want Newton Mearns to stay small and I just don't want another school.	1

Mearns Primary School – Written Responses on the Ballot Forms by Stage

There were no written responses on the ballot forms for all of P1, P2 and three out of the four P3 classes. A few pupils in one P3 class recorded both reasons for agreeing and disagreeing with the proposal and these reasons are recorded in the written responses below.

Stage	Agree	No of Times	Disagree	No of Times
P3	Meet new friends	3	Good for the kids but not for the animals / You will hurt the cows / What about the animals/insects in the field / Nature and trees could not live / Bad for wildlife	18
	Good for education / Children need to learn	3	There will be bad/more traffic	6
	Because more houses getting built	2	It will make dirty air/global warming / Make more pollution	4
	Because of the amount of children	1	Lose friends made	2
There will be too much parking			1	

Stage	Agree	No of Times	Disagree	No of Times
P4	Want children who move into new houses to have a school / Want children to go to school to learn / Want new children to have a school/get a very good education and learn / More people can go to the new school	18	Loss of friends	13
	Because of the new/more houses being built	17	Do not like where they're building / They're building on farm land / The animals won't have anywhere to live / Bad for the environment	11
	There is no space in Mearns / Mearns and Kirkhill are 99% full Mearns is too full/big/crowded/packed / Schools will not be crowded / More spaces available in new school / Lots of children will need a new school	15	Streets will be very busy / Roads will be traffic jammed / Cause disruption with traffic / Traffic could get much worse	10
	Children would be nearer to the new school / People that don't live close can go to the new school	2	There won't be enough places to grow food / Wont' be enough room for dog walkers / Take up too much space / Kids won't have enough room to play / Take over too much land	5
	There should be more non-denominational schools	1	There would be more litter	3
	There will be lots of space in Mearns Primary	1	Because our school is great / Want more children to come to Mearns	2
			Our school will get smaller with all the children that want to leave / It could affect our school	2
		My friends want to go there but I don't / Don't want to move school	2	

Stage	Agree	No of Times	Disagree	No of Times
P4 Contd.			Siblings in different schools	1
			There would be too many houses	1
			The schools might get crowded	1
			I want my little cousin to be in the same school	1
			The new school would take up half the pitch	1
			Everyone will be driven crazy	1
			Taking up too much room	1
		Will affect where I live	1	

Stage	Agree	No of Times	Disagree	No of Times
P5	Kirkhill and Mearns are already full / I don't want Mearns to get filled up / There will be more space/room in Mearns and Kirkhill / There will be less people in the classes / Schools will not so cramped/overflowed / Schools will become jam packed so the playgrounds will seem smaller, classrooms will get bigger and it would be noisy / Children will get more help if they need it / If other schools get full they will have an extra school	25	It is ruining nature / It will waste land / Destroy a lot of nature / Take up a lot of space / Will lose ground by building more houses and schools / The new school will take up a lot of space	10
	Children need a school / Want children who move into new houses to have a school / Want people to have a good education	14	If you live in that area you have to move to the new school / If you live closer to Maidenhill you will have to go there and you might want to go to Mearns / If a new P1 wants to go to Mearns or Kirkhill they have to go to Maidenhill / You may have to change school	8
	Because of new houses being built / New houses means more people / New houses being built so there should be a new school	10	People have to move to the new school if they don't want to / Giving orders that you must go to a certain school / New P1s shouldn't have to move to the new school / Siblings might have to go to the new school	6
	Would be nice to go to a school close to you / People don't need to travel very far/a long way to get to school	7	It is fine as it is / There is no point / Don't need another place to get an education / I don't want anything to change / I don't want to move to the new school / It might affect me	5

Stage	Agree	No of Times	Disagree	No of Times	
P5 Contd.	There would be more jobs on offer	7	If not enough space in the new school they will make new school then new houses / More houses means more schools get built so they build more houses / An excuse to build more houses / There are too many houses so stop building them and you don't need to build a new school	5	
	We need more schools	1	We will lose money so we can't pay for the things we need / Mearns will get less pupils and less money for the school	5	
	It will make Mearns quieter	1	Siblings in different schools	3	
	Mearns nursery needs a bigger playground		1	Less people will come to Mearns / Mearns will become a smaller school / It will make other schools like ours smaller	3
				Loss of friends	2
				There are lots of schools that are not full / There are already lots of schools	2
				New school will be so close to Mearns and Kirkhill	2
				Would have better learning at Mearns instead of the other school / P1 would like it better in Mearns	2
				You should just go to the school closest	1
				If build another school then more houses will have to be built to fill the new school	1
				The new school will leave no space for new houses to be built	1
				Children could be late because of the traffic	1
				Children might not get to go to that High School	1
				Could we build somewhere else?	1
				New children can just come to Mearns	1
It will cause mayhem	1				
All schools can get bashed together and it won't be nice	1				
It would affect my Mum's job	1				
Hard to find new teachers	1				

Stage	Agree	No of Times	Disagree	No of Times	
P6	Need new school for the new houses being built / Over 600 houses being built / For the new children / Want children to learn/get a good education / For people who move into Newton Mearns / Another school means these children have somewhere to learn / There would be enough spaces in schools for everyone / Give more children an education	27	Ruin/effect animal life / Kill/effect/destroy animal habitats / Effects nature and the environment / Cause pollution / Use up green space, farm land and fields / Destroy trees / Take up too much land	23	
	Mearns and Kirkhill are full/crowded/extremely full / There is no space in Mearns and Kirkhill	12	Cause too much traffic / Lead to accidents	16	
	There will be more space in Mearns and Kirkhill / The schools will be less full / Less people in our classes / Some children from full schools would go to the new school / More space in our playgrounds and classes	5	Don't like the building / Don't want the new houses being built / Don't want 645 more houses	8	
	Younger children can choose which school to go to / You will get a choice to go to the new school or stay	2	New school costs a lot of money / Is expensive	6	
	Cut down on travel time / Will be easier if new school closer to you	2	Take up too much space / New houses will take up too much space	3	
	It is a new catchment	1	Loss of friends	3	
	Need more schools in our area	1	Effect a lot of people / Too much impact on the schools	3	
	Parents who live further away from school won't have to travel as far		1	Don't like the change to the catchment areas / Will take a chunk out of Mearns catchment	2
				It will affect other pupils / Effect different schools across the area	2
				Children in P1/P2 may have to go to the new school / Younger sibling might need to go to new school	2
				They have just built the Cala houses	1
				New school will be small and what if there is not enough space	1
				There will be more people everywhere	1
				There are too many schools	1
People are building the houses and schools for money				1	
All the pupils in the new houses could attend Mearns				1	
It is fine the way it is	1				
Frustrating for parents	1				

Stage	Agree	No of Times	Disagree	No of Times
P7	Need more schools for people wanting to live here / For people moving into this location / Need new school for new houses being built / Building a new school will provide space / More people will have an education / More schools/spaces for children / Too many people in the area for just two schools	23	Unfair if people have to move to the new school / Change to catchment area	13
	Lot of primary schools quite crowded / No space in schools / It will stop the schools getting packed/being crowded/busy / Classes are full / Need for new school because our school is too full / Not enough space in our school so it is necessary / It will even out the numbers in another building	16	Building will cause more pollution / No farm land/space for animals / Building will take up space/more land will be taken up / Kill plants, trees and animal habitats / Not environmentally friendly / Damage to nature / Need for green open spaces	13
	Parents can send their children to a school nearby their house / People can go to a school closer to them	2	New build is a waste of money / Cost of new school uses money that can be used on something else/other important things	7
	New build easier for children who live at Maidenhill/live in that catchment area	2	Might get separated from siblings / Siblings in different schools	6
	There would be more room in classes	1	Great deal more traffic/congestion / More traffic everywhere	5
	Population increases	1	There are plenty of schools in Newton Mearns / I don't want a new school to be built / There are enough schools	4
	It will provide more jobs for people	1	Loss of friends	2
	Children would have the opportunity to go to a non-denominational school	1	Newton Mearns will get more busy with 3 schools and new houses	1
	There will not be a waiting list to get into the school	1	It is fine the way it is	1
	Easier to get into a school nearby your house	1	It will be a lot of hard work	1
	It will keep the environment healthy and clean	1	The new school will be closest to Eastwood High	1
	There will not be a waiting list to get into the school	1	There will be more people in the High School	1
			There are already non-denominational and catholic schools and not many Muslim and Jewish schools	1

Mearns Castle High School – Written Responses on the Ballot Forms (7) and Postal Responses (2) by Stage

There were no written responses from S3, S4 and S6 pupils.

Stage	Agree	No of Times	Disagree	No of Times
S1	I like the idea but some people would have to go to Eastwood and some would go to Mearns Castle High School.	1		

Stage	Agree	No of Times	Disagree	No of Times
S2	There is sufficient space for extra pupils.	1		

Stage	Agree	No of Times	Disagree	No of Times
S5	I think that it important for children in East Renfrewshire to get the best education possible.	1	Insufficient infrastructure to cope with a greater number of people in an area that has not changed / improved its main access roads, its parking provision or public transport option.	1
	By making it a non-denominational school it makes people from different backgrounds all equal and equality is what I believe should be a priority.	1		

Appendix 6 – Primary Pupils’ Verbal Views

Kirkhill Primary School – Verbal Views Expressed to the Consultants

Eleven pupils visited the consultants during the follow-up visit to the school. The table below sets out the views expressed. It should be noted that some pupils posed more than one question. The consultants responded to all the questions from the pupils.

Verbal Questions	No. of Times
If you live in the catchment of the new school do you have to go to the new school?	4
Where is the new school going to be?	3
How many pupils will the new school have?	3
Why do you need to build a new school?	3
I am in P5 and my sister is in P2 at the moment and my brother will be starting school for the first time when the new school opens. What happens to them when the new school opens?	1
Will parents of children at nursery be given a letter about the new school?	1

Mearns Primary School – Verbal Views Expressed to the Consultants

Thirty three pupils visited the consultants during the follow-up visit to the school. The table below sets out the views expressed. It should be noted that some pupils expressed more than one reason for their viewpoint. The consultants responded to the questions from the pupils.

Verbal Views Expressed	No. of Times
Why do you need to build a new school?	7
Impact on environment e.g. building on green land, concerns regarding animals and trees.	6
Worries about friends moving to the new school.	5
The effect of the proposal on the children in the Cala homes e.g. distance to the new school.	4
How big will the new school be?	2
We don't want to leave Mearns PS.	2
Where will the new school be built?	2
We do not want a new school because it would cause trouble for parents.	2
Will the new school be nut allergy free?	1
What will happen if the new school becomes full?	1
I agree the need to build a new school.	1
When will new school be built?	1
Is it a religious school?	1
Why can't people come to our school?	1
Where will the car park be?	1

BLANK PAGE

Appendix 7 – Results of Pupils’ Views

Results of Primary Pupils’ Views

School	Roll	P1			P2			P3			P4			P5			P6			P7			Overall		
		A	DA	NR	A	DA	NR	A	DA	NR	A	DA	NR	A	DA	NR	A	DA	NR	A	DA	NR	A	DA	NR
Kirkhill PS	621	30	37	10	53	33	4	53	19	10	59	23	6	55	22	22	60	6	26	48	26	25	358	166	103
Mearns PS	836	47	60	5	70	32	16	51	57	12	50	57	11	46	73	9	44	64	5	47	68	12	355	411	70

The ‘No Response’ figure equals the number of pupils who chose not to express a view on the proposal and the number of pupils who recorded the proposal was neither a good nor bad idea.

Results of Secondary Pupils’ Views

School	Roll	S1			S2			S3			S4			S5			S6			Overall		
		A	DA	NR	A	DA	NR	A	DA	NR	A	DA	NR	A	DA	NR	A	DA	NR	A	DA	NR
Mearns Castle HS	1248	2	1	215	2	0	214	0	0	220	0	0	216	3	1	203	0	0	171	7	2	1239

Key: A = Agree

DA = Disagree

NR = No Response and Neither a Good Idea nor Bad Idea

BLANK PAGE

EAST RENFREWSHIRE COUNCIL : EDUCATION DEPARTMENT

Note of Public Meeting

Regarding the Future Non-Denominational Primary School Provision in Newton Mearns South and Establishment of a New Non-Denominational Primary School and Nursery Class at Maidenhill : From Session 2019-20 and Beyond

Thursday 15 December 2017 at 7pm
In Mearns Primary School

Present: Councillor Elaine Green, Convener for Education & Equalities (Chair)
Mhairi Shaw, Director of Education
Fiona Morrison, Head of Education Services
Mark Ratter, Head of Education Services
Gillian McCarney, Development Management & Building Standards Manager

Councillor Green welcomed everyone to the meeting and introduced the panel members. She explained that the purpose of the meeting is to provide more information on the proposal. She outlined the legal process which must be followed when making changes to school estate, in line with the Schools Consultation Act 2010, and that the Local Government Scotland Act 2003 requires authorities to provide adequate and sufficient places for their residents. Any proposal requires to be reasonable and viable. Councillor Green advised that the consultation period will end at midnight on 20 January 2017. Thereafter, the Director will prepare a report, taking into consideration comments received, and this report will be submitted to Education Committee on 30 March 2017, although the report will be available for scrutiny 3 weeks prior to that date. Councillor Green advised that the meeting will be minuted. She then handed over to Mr Ratter.

Mr Ratter delivered a presentation providing further information about the proposal, to allow parents and other interested parties to respond. He outlined the present position, the implications of the local development plan and what happens next.

Mr Ratter explained that there was a need for change due to high occupancy levels in Kirkhill and Mearns primary schools and as a consequence of planned housing developments in the Kirkhill, Maidenhill and Malletsheugh areas. In addition, there is a need to meet growing demand for pre-five places in the authority.

He outlined the current provision in Mearns and Kirkhill, their school roll histories and the current and proposed delineated catchment areas for both schools, and the new school.

Mr Ratter advised on the educational benefits which would be realised should the proposal be accepted and the implications of the proposals.

He finished by reminding everyone that the consultation period finishes at midnight on 20 January 2017 and advised on the groups and individuals who have been consulted in relation to this proposal, as required by legislation. He explained that Education Scotland has a statutory role in the process and they will be sent details of all responses received and issues raised at the public meeting. A report will then be prepared by the Director of Education which will be considered by Education Committee at its meeting on 30 March 2017. This report will be available for scrutiny 3 weeks prior to that date. Should the proposal be accepted, discussion with stakeholders on the school design would take place from April onwards.

The meeting was opened up for questions.

A parent of a child at Mearns PS who has another child starting school in 2018, referred to the current transport arrangements from Mearnskirk and asked if this would still operate or would there be a bus to Maidenhill, adding that, one of the reasons why the bus is provided, is that the route was deemed to be unsafe.

Mr Ratter replied that they have been working closely with colleagues planning in relation to the design of the school and the surrounding area. There will be safe walking routes from Mearnskirk to the new school, although there will not be a road, families will be encouraged to cycle or walk to school.

Another parent expressed concern as he lives in a cul-de-sac joining up to the development and he thinks that parents will park their cars there and then walk their children to the school. Gillian McCarney advised that there are going to be two points of access to the proposed development, one from the upgraded old Ayr Road and one from the Glasgow South Orbital. The upgraded road will have a 3 metre wide cycle way and pedestrian access.

Ms McCarney added that when building modern schools a lot of parking spaces have to be provided, in ERC more spaces are provided due to the high rates of car ownership. As such there will be plenty of parking at the new school, this will negate the need to park in the cul-de-sac. However, as it is a public road this would be difficult to control.

The parent of a child due to start nursery in August sought clarification on the catchment area for the new school and the implications in terms of transitions from nursery to primary. Mrs Shaw advised that they were in the catchment of the new school at Maidenhill, so would transfer from Mearns Nursery to the new school. She advised the parent that this is a normal situation. None of the denominational schools in the authority has nursery provision and often P1 children attend from a variety of nurseries. There is no association between nursery and primary provision; not like going to a primary and then the associated secondary. The parent explained that she had arranged her circumstances on the understanding that her child would transfer to Mearns PS. Mrs Shaw said that nursery staff are very skilled at transitions and she is sure that they will be able to provide the necessary support.

Another parent, whose son will be transferring to Mearns Castle HS, expressed concern that there will be fewer children transferring from Mearns PS and many will be going to high school without their friends and in smaller groups. Mr Ratter replied that officers had looked at changing the catchment and the possibility of association with Kirkhill but that Kirkhill did not have sufficient capacity to manage the additional pupil places.

Mrs Shaw stated that, when she was Head Teacher in Mearns PS, 75% of pupils should have gone to Eastwood and 25% in the current catchment of Mearns Castle HS. She understands that this may not be ideal but there are excellent transition arrangements and cluster working in Mearns PS and head teachers in all ER schools are very skilled in this area.

Mrs Shaw encouraged the parent to include her concerns in her response.

A parent, who lives on the east side of Ayr Road and whose child will be moving to the new school, asked about the number of pupils who will be attending the school straight away. Miss Morrison responded that it is dependent on a number of factors, so they need to wait and see what the arrangement of classes will be. She said that quite often the early stages have the biggest classes. Some people may decide to stay in Mearns although they are resident in the Maidenhill catchment. Parents have that option and some want to keep their youngest child with their friends. She added that it can take a while to establish a new school.

Someone in the audience expressed concern about the increase in traffic which is already very busy at peak times and asked how this would be managed. The response was that there are other access points to the new school and there will be opportunities to move a child from Mearns to Maidenhill. This will need to be managed. Miss Morrison said that families will be encouraged to walk to school and travel plans have been and will continue to be looked at. She is aware that some parents may have to drive due to work commitments and there will be spaces to park to walk their children into school.

A parent of 3 pupils in the affected area asked if the new housing, and only the new housing, could be served by the new non-denominational school and why the Mearns Primary area has to be affected. Miss Morrison replied that a new school is being established to try to reduce and address the over capacity at Mearns and Kirkhill whilst taking into account new residential development. There are a number of re-directed pupils from Kirkhill. People move into the catchment area and are unable to access a place so they are trying to free up spaces in the existing schools.

A parent said that changing the catchment is unsettling for parents who have bought a house on the understanding that you know what the catchment school is and this would be a concern for future buyers. Miss Morrison replied that, in terms of houses being associated with a catchment all East Renfrewshire schools provide a high quality education, therefore no matter what school in this area it was zoned to it should not make any difference. The Council has a public duty to ensure sufficient places and it is allowed to change catchment areas associated with schools, following due processes. That is what is happening during this consultation, meeting the requirements of legislation to provide sufficient places for local residents.

Another parent referred to the 650 units planned up to 2022 and a further 620 beyond that and asked if there is provision in Mearns Castle up to 2020 or beyond that.

Mr Ratter responded that he is confident that there are sufficient places to manage that.

A parent of two children at Kirkhill referred to the catchment for the new school saying that he would be keen to send his son there if he knew other children would attend and asked what the experience at St Clare's has been with regard to uptake. He added that if the uptake was low, would this mean that there would be around 60% of placing requests populating the school initially?

Mrs Shaw advised that it was too early to say in terms of St Clare's. While parents can be encouraged to apply for the new school, the authority cannot organise children into classes with their friends. However, there are other ways of supporting children. They do understand the emotions around this in terms of leaving a school and moving to a new one. This is a parental decision. Mrs Shaw noted that the authority would learn any lessons from the experience at St Clare's and use this with the new school at Maidenhill.

The same parent asked for an estimate of the number of children starting St Clare's next year. Mrs Shaw said that the deadline for parents to make that decision has been extended so this will not be known for a while. New schools can take a while to establish albeit Mearns PS used to be a 2 stream school and it grew significantly very quickly. Lessons will be learned from St Clare's in due course and different approaches will be used if necessary.

A parent expressed concern that children would be attending the new school and builders will be all around. In addition, there has been press coverage about some PFI schools which have experienced problems. He asked who the builder is going to be.

Ms McCarney replied that, in terms of development, there are limits on when houses can be occupied so that schools are not overwhelmed. This is done in a phased manner. Companies invest a lot of money and a lot of infrastructure has to be in place.

Ms McCarney referred to the new access on the old Ayr Road where the first phase will be. She advised that developers do not put in infrastructure in all at once but in stages and it is unlikely that there will be a full dedicated access from one part of the site to the other in the beginning. However, they will ensure that there is a safe walking route to the school. It is too early in the process to determine who would build the new school.

A lady in the audience who is in the catchment area of the new school, commented about the impact of Brexit as people may be unable to get mortgages and builders may not be able to go ahead as planned. So there may be a new school building and no more houses built round about it. She wondered if this had been taken on board.

Ms McCarney said that house builders are in the business to make money and will not invest hundreds and thousands of pounds if they don't think they will be able to sell the houses. However, the building in recent months since the Brexit vote has not slowed down. Officers in the Planning Department talk regularly to the house builders and none of them has raised any issues in this regard. However, the situation will continue to be monitored.

In response to a question as to whether the 2 streams will be built in one go or in stages, Miss Morrison replied that it is better value and less disruptive to build it all at the one time. She added that the school would also provide a community facility outwith school hours.

A parent of two pupils at Mearns PS asked how many families with children are predicted to come from the new houses, assuming they are all built. Mr Ratter replied that projections are carried out based on experience of previous developments. They looked at the Greenlaw and Westacres developments and were able to project how many families are likely to require a school place and the mix of stages. These projections continue to be monitored to ensure the predictions are accurate and if the situation changes, they can respond accordingly.

A member of the audience asked if any alternative proposals have been considered, should this one not go ahead. In addition, there have been rumours about pupils being bussed to other parts of the authority. It was confirmed that there is no truth in these rumours and there are no plans to do this.

In response to a question from a parent of 3 children (2 who will attend Mearns and 1 who will be in the catchment for Maidenhill) and what availability would there be for the older children to remain at Mearns PS, Mr Ratter said that it is a family's choice. However, if they decided that they wanted their youngest child to attend Mearns, a placing request would have to be submitted noting there is a higher priority for siblings, if there are places available.

Mrs Shaw responded to a question regarding the number of places available, saying that the new school will have two streams (60 at each stage). Mearns PS will continue to be a 4 stream school (120 at each stage). However, the actual roll varies from year to year.

A parent asked if the proposed catchment areas are set in stone and whether consideration could be given to prioritising places depending on how far parents lived from the school.

Mrs Shaw replied that this would discriminate against people who lived on the edge of the catchment. The parent replied that he/she feels discriminated against just now, once the catchment area changes. Mrs Shaw reiterated that submitting a placing request would be an option, where places were available.

A gentleman who lives in the Paidmyre area said that his child walks to school most days. However, the walk to the new school would be double that distance and he queried why the school was located so far to the south west and not nearer the centre of the catchment area. Ms McCarney explained that, essentially, it is because of the road access. The site was considered to be a good location because of access from the Glasgow South Orbital. In addition they require the school to be delivered early.

A further question was asked regarding a footpath and Ms Carney confirmed there would be direct access from there. She advised parents that the development plans are available on the portal showing the access from the surrounding area and where it links in with bus stops etc. However, should anyone have any queries, they are welcome to call the Environment Department and speak to one of the planning officers.

In response to a question about footpath on the building site, Ms McCarney advised that she cannot guarantee that the permanent footpath will be completed for the opening of the new school. However, there will be a temporary route to the school that is safe.

Ms McCarney was asked about the distance from Paidmyre to the new school and she advised that she does not know but can find out.

A member of the audience asked, if parents are to make a choice about transferring to the new school when would that decision have to be made and would there be information available in order to make that choice? In addition, who will the head teacher be, will there be after school provision and what will be the school closing time?

Mrs Shaw explained that many of these decisions should be made by a school community. With regard to the head teacher, there is a process which has to be followed. The head teacher for St Clare's has just been appointed this week and this allows a long lead-in time before the new school opens.

With regard to after school care, Mrs Shaw advised that 5 providers have expressed an interest in providing out of school care at St Clare's so she does not see that there would be an issue.

Someone asked if you wanted your child to remain in their school but then had more family could they then move to Maidenhill. Miss Morrison explained that a placing request would have to be made but that it is likely that there would be places given the time to fully establish a new school.

Councillor Swift commented that in terms of recreational provision, the Mearns area is barren and is there an opportunity to enhance the school to make it more attractive, i.e. with a gym and other facilities to serve the wider public. Councillor Green agreed that this would be a good idea if there was money available. Mrs Shaw agreed that this was dependent on capital resources.

She added that the LDP2 is currently out for consultation and encouraged people to respond.

Councillor Green thanked everyone for coming along to the meeting and reminded them of the ways in which they can respond to this consultation.

BLANK PAGE

EAST RENFREWSHIRE COUNCIL : EDUCATION DEPARTMENT**Note of Meeting with Parent Council Representatives****Re Future Non-Denominational Primary School Provision in Newton Mearns South and Establishment of a New Non-Denominational Primary School and Nursery Class at Maidenhill : From Session 2019-20 and Beyond****Tuesday 6 December 2016 at 7pm
In Mearns Castle High School**

Present: Councillor Paul O’Kane, Vice Convener for Education & Equalities (Chair)
Mhairi Shaw, Director of Education
Mark Ratter, Head of Education Services
Fiona Morrison, Head of Education Services
Richard Greenwood, Principal Planner, Environment Department
Karen Barrie, Project Officer, Environment Department

Councillor O’Kane welcomed everyone to the meeting and introduced the panel. He advised that there is a Public Meeting planned for next Thursday, 15 December at 7pm in Mearns Primary School.

He outlined the proposal, as above, to establish a two stream primary school and a 120 place nursery in the Maidenhill area. He said that parent councils had been invited along to this meeting as representatives of the educational establishments that will be affected by the proposal, i.e. Kirkhill and Mearns primary schools and Mearns Castle High School. In addition, the invitation was extended to parents of local authority family centres and partnership nurseries.

Councillor O’Kane outlined the legal process which must be followed when making changes to school estate, in line with the Schools Consultation Act 2010 and its amendments. He explained that the Local Government Scotland Act 2003 requires authorities to provide adequate and sufficient spaces for their residents and any proposal requires to be reasonable and viable. He advised the group that the consultation period will end at midnight on 20 January 2017. Thereafter, the Director will prepare a report, taking into consideration comments received, and this report will be submitted to Education Committee on 30 March 2017, although the report will be available for scrutiny 3 weeks prior to that date.

Mr Ratter delivered a presentation to provide further information about the proposal, to allow parents to respond individually and/or as part of their parent councils. He outlined the present position, the implications of the local development plan and what happens next.

Mr Ratter explained that there was a need for change due to high occupancy levels in Kirkhill and Mearns primary schools and as a consequence of planned new housing developments in the Maidenhill and Malletsheugh areas. In addition, there is a need to meet growing demand for pre-five places in the authority.

He briefed parent council members on the current provision in Mearns and Kirkhill, their school roll histories and the current and proposed delineated catchment areas for both schools, and the new school.

Mr Ratter advised on the educational benefits which would be realised should the proposal be accepted and the implications of the proposals.

He finished by reminding everyone that the consultation period finishes at midnight on 20 January 2017 and advised on the groups and individuals who have been consulted in relation to this consultation, as required by legislation. PC members were encouraged to respond individually or as a group. He explained that Education Scotland have a statutory role in the process and they will be sent details of all responses received and issues raised at the public meeting. A report will then be prepared by the Director of Education which will be considered by Education Committee at its meeting on 30 March 2017. This report will be available for scrutiny 3 weeks prior to that date. Should the proposal be accepted, discussion with stakeholders on the school design would take place from April onwards.

The meeting was opened up for questions.

A member of Mearns PS parent council asked a question about the transition arrangements options. In addition, some parents have asked about class sizes and would these be small numbers at the start of the new school.

Miss Morrison responded that, when a new school opens, some people choose to remain in the school where there are older siblings. A new P1 start may decide to move to the new school. Officers are interested in what parents wish to do and there will be an option to remain or to move to the new school. The class sizes will depend on the numbers coming through but Miss Morrison advised that P1-3 classes tend to be bigger initially and it takes a period of time before the classification is properly established.

A parent council member from Kirkhill Primary School asked about the statutory requirement in relation to the number of streams going in to Mearns Castle and if there are plans to increase this to 9 or is it already at 9. He feels that some children could miss out because of pressure due to increasing numbers.

Miss Morrison replied that, while Mearns Castle has physical capacity for 9 streams, they have not operated at that for a number of years. It is currently operating as 7 streams and therefore it would be able to take another 2 streams from Maidenhill. She added that it is still expected that there will be some placing requests from primary to secondary, however, the authority is duty bound to provide sufficient places for its residents.

A Kirkhill parent referred to the 160 new units mentioned in Mr Ratter's presentation and where these will be located. Mr Greenwood replied that he did not have this information to hand but this can be provided if required. He referred to the existing housing which sits in the plan in the Kirkhill catchment.

A parent sought clarification regarding which catchment the new housing would feed into and was advised that, as explained in the presentation, properties to the east of Ayr Road and south of Eaglesham Road are in the catchment of the new non-denominational primary school. It was noted that further details can be found in Appendix F of the consultation document.

A parent, whose eldest child is about to start S1 and who has a younger child at Hazeldene, asked what would happen when the eldest goes to Mearns Castle. The school currently takes 7 streams. If it was to be increased to 9, would this affect the league tables as the school currently achieves very well. Surely this would impact on the standard of teaching when there would be a lot more children in the school. Would extra teachers be required?

Mrs Shaw responded that St Ninian's takes 10 streams and Williamwood is also a large school and both these schools perform exceptionally well so it is not related to the size of a school. She explained that Mearns Castle has capacity to take 9 streams but is not currently staffed for 9 streams. Additional staff would be required to allow it to run at that size. She

said that it has operated at that capacity previously. There are a lot of placing requests into the school at the moment and, as Mr Ratter had said earlier, capacity for placing requests would go down as the catchment goes up.

A Hazeldene parent asked about provision for children attending Kirkhill who will be staying at the school and asked if the Council had considered provision for children just starting with younger siblings to follow and how would the process be managed.

Mr Ratter explained the options available. A parent whose child is starting in the new school can decide to move older children to the same school. If, however, they decided they wanted their younger child to join their sibling already at Kirkhill, they would be required to make a placing request but they would have a higher priority by having a sibling already at the school.

In response to a question about transitional arrangements, Miss Morrison referred to the recent consultation that had taken place regarding changes to the proposed admissions arrangements and clarified that, should this proposal go ahead, the criteria would only come into place in the future at times of over-subscription. The first priority is for catchment pupils and the second one refers to siblings.

A parent of a child who has just started P1 in Mearns PS said that her youngest child would be starting school in 2019 and asked about the situation regarding a placing request for Mearns PS. If this was refused, would her child be guaranteed a place at Maidenhill and could she transfer her eldest child to the new school? Officers confirmed that this was the case.

Karen Barrie from the Planning Department, explained that there will be better opportunities for walking and cycling to school as there are plans for routes to link up with existing paths to the new development.

One of the Mearns PS parents stated that she appreciates what is being done by the Council, although she is aware of negative comments from some people regarding the new housing developments. She expressed concern about fewer children from Mearns Primary going to Mearns Castle. It would be beneficial for her to move her children. She would look at the location and environmental set-up and she would like her children to be able to walk or cycle to school. She also spoke about working parents and after school provision in the new school. She appreciates that the new school has a lot to offer and Mr Ratter had said it won't change.

Councillor O'Kane confirmed that there are no plans to change the catchment of Mearns Castle HS and such things are bound by legal framework.

Mrs Shaw said that, in terms of planning, it would be useful for planning colleagues to hear about environmental aspects and these will feed into the school and community involvement in planning the new school. With regard to out of school care, Mrs Shaw explained that this is essentially for parents and providers to take forward. However, the Council is happy to facilitate this. She informed the group that 5 providers had expressed an interest in providing out of school provision at the new school.

The parent also asked about Hazeldene and the provision it currently provides and wondered if the nursery provision in the new school would have an impact on Hazeldene, i.e. would it still be required?

Mrs Shaw advised that it is the Scottish Government's intention to expand the number of hours offered to parents and, for East Renfrewshire, this will mean expanding the number of

nurseries. Hazeldene is part of these plans and it is hoped that, with the introduction of a new nursery as part of Maidenhill, more flexible provision can be offered at Hazeldene, depending on the number of families.

Janice Collins, Head of Service, added that, when applying for nursery places, parents apply for a community, for full days or half days. This is a change that has taken place recently and indicated that Hazeldene will continue to be one of the choices for parents.

A representative from Crookfur asked about flexibility at the new nursery provision in Maidenhill and would it perhaps offer 2½ days, rather than, e.g. 5 mornings. Mrs Shaw said she hopes with the increase in places available at Calderwood Lodge Nursery, that pressure will be taken from Hazeldene and allow it to offer more flexibility. Crookfur, too, will ease the pressure as it has increased to 90:90 this year. However, it should be noted that this would always have a caveat that it is dependent on numbers.

A Hazeldene parent asked if any alternative options had been considered or is this the only one? Miss Morrison replied that as part of the LDP, consideration is given to local needs. Two sites were earmarked in this side of the authority, one for a denominational school and one for a non-denominational school. It's about where the housing and the need is and it is better to have this in the centre of a community.

Mr Greenwood added that the Masterplan is set up to serve the community. Ms Barrie explained that the Council does not own much land in the Newton Mearns area and they have to work with private developers and advise them that part of the site has to be reserved for schools. Councillor O'Kane added that the Local Development Plan process has been ongoing since 2012. Things take time to plan. The Scottish Government dictates that there has to be adequate land supply and ensure that back-up services are in place, for example education, amenities and leisure. Elected members are very involved in all of these decisions and now parents' views are being sought.

A Mearns PS parent commented that this is a fantastic thing that is being done. People move into the area because of the education being provided. However, he is aware that it is not always easy to find good teachers. He asked if there are plans in place to identify ways to attract talent into the area.

Mrs Shaw advised that, essentially, this process is looked at on an annual basis. She spoke about the teacher recruitment exercise. The last exercise in March was very successful, particularly in the primary sector, although it is very difficult to find people in the primary sector who are willing to take on the role of head teacher. This, however, is not just an East Renfrewshire problem. In addition, people come to East Renfrewshire to do their probationer (Newly Qualified Teacher – NQT) year because they enjoy the training and support they receive in this authority, but then they move on. This is a particular problem in the secondary sector. Education officers work very closely with ADES (Association of Directors of Education Scotland) and the Scottish Government in relation to the recruitment needs of all of our schools and there are teacher number targets that have to be met each year.

Mrs Shaw took the opportunity to advise parent council members of the Governance Review which is currently being consulted on and encouraged them to respond.

A parent from Hazeldene asked about supports in place for the new school and what lessons have been learnt from previous new schools. Mrs Shaw replied that the head teacher will be recruited at an early stage and will be in Mearns PS getting to know people early on. This will allow time for the recruitment process to take place, although there will not necessarily be a transfer of staff. It's about parents taking that leap of faith. However, the department is in the middle of learning with the opening of St Clare's and lessons will be learned and we will think carefully about transitions.

A Kirkhill parent referred to the 650 developments by 2022 and 620 beyond that. Presumably families will be attracted to those and she wondered what proportion of this would be children wishing an education in our schools. Mr Ratter replied that they had looked at the housing in Westacres and Greenlaw and were able to determine how many pupils had come from those developments. It gives an accurate picture. These things are reviewed regularly. However, even if there were an additional 165 additional non-denominational primary pupils instead of the 145 predicted, there will still be sufficient places.

Ms Barrie referred to the development diagonally across from Mearns Castle – 153 units and another couple of smaller developments coming forward. These have been taken into account.

Mr Ratter advised that the planning capacity of the new school will be 420.

Councillor O’Kane explained that the Council has a duty to provide land supply and this is being planned as far as possible, planning out routes and infrastructure.

Mr Greenwood explained the main reason for taking this approach with the LDP which has a shorter lifespan, is much more ambitious and forward thinking than previously and it can be built upon as things progress.

Councillor O’ Kane thanked everyone for coming to the meeting and reminded them of the ways in which they can respond to the consultation. All are welcome to attend the public meeting on Thursday 15 December at 7pm in Mearns Primary School.

BLANK PAGE

Report by Education Scotland addressing educational aspects of the proposal by East Renfrewshire Council to establish a new non-denominational primary school and nursery class at Maidenhill, Newton Mearns.

1. Introduction

1.1 This report from Education Scotland has been prepared by HM Inspectors in accordance with the terms of the *Schools (Consultation) (Scotland) Act 2010* and the amendments contained in the *Children and Young People (Scotland) Act 2014*. The purpose of the report is to provide an independent and impartial consideration of East Renfrewshire Council's proposal to establish a new non-denominational primary school and nursery class at Maidenhill, Newton Mearns. Section 2 of the report sets out brief details of the consultation process. Section 3 of the report sets out HM Inspectors' consideration of the educational aspects of the proposal, including significant views expressed by consultees. Section 4 summarises HM Inspectors' overall view of the proposal. Upon receipt of this report, the Act requires the council to consider it and then prepare its final consultation report. The council's final consultation report should include a copy of this report and must contain an explanation of how, in finalising the proposal, it has reviewed the initial proposal, including a summary of points raised during the consultation process and the council's response to them. The council has to publish its final consultation report three weeks before it takes its final decision. Where a council is proposing to close a school, it needs to follow all legislative obligations set out in the 2010 Act, including notifying Ministers within six working days of making its final decision and explaining to consultees the opportunity they have to make representations to Ministers.

1.2 HM Inspectors considered:

- the likely effects of the proposal for children of the affected schools; any other users; children likely to become pupils within two years of the date of publication of the proposal paper; and other children and young people in the council area;
- any other likely effects of the proposal;
- how the council intends to minimise or avoid any adverse effects that may arise from the proposal; and
- the educational benefits the council believes will result from implementation of the proposal, and the council's reasons for coming to these beliefs.

1.3 In preparing this report, HM Inspectors undertook the following activities:

- attendance at the public meeting held on 15 December 2016 in connection with the council's proposals;
- consideration of all relevant documentation provided by the council in relation to the proposal, specifically the educational benefits statement and related consultation documents, written and oral submissions from parents and others; and

- visits to the sites of Kirkhill Primary School and Mearns Primary School, including discussion with relevant consultees.

2. Consultation Process

2.1 East Renfrewshire Council undertook the consultation on its proposal(s) with reference to the *Schools (Consultation) (Scotland) Act 2010* and the amendments in the *Children and Young People (Scotland) Act 2014*.

2.2 The consultation process ran from 28 November 2016 to 20 January 2017. During this period, the council held a meeting with Parent Council representatives on 6 December and a public meeting at Mearns Primary School on 15 December 2017. Statutory consultees, including Parent Councils of the schools directly involved and pupils of the affected schools, were informed of the consultation in writing. Consultation documentation was published on the East Renfrewshire Council website and copies were available for public consultation at several venues during the consultation period, including the schools concerned. A pro-forma questionnaire was made available for responses. The council received 37 responses, the majority of which expressed support for the council's proposal.

2.3 Almost all stakeholders who met with HM Inspectors felt that the council had provided good opportunities for being consulted and for giving their views. Pupils at both Kirkhill and Mearns Primary Schools appreciated the opportunities which they had had to discuss the proposal with council officers. As a result, they were very well-informed about the proposal.

3. Educational Aspects of Proposal

3.1 This proposal involves the establishment of a new non-denominational primary school and nursery class, and associated catchment area, in the Maidenhill area of Newton Mearns. The two existing schools in the area, Mearns Primary School and Kirkhill Primary School are already running at around 99% capacity and it is not considered feasible to extend either school. Further planned house building in the area would lead to school rolls exceeding the number of places available.

3.2 The proposal has the potential to provide children who will attend the new school with a purpose-built learning environment well-suited to their learning needs. At the same time, the proposal will reduce the possibility of overcrowding at both Kirkhill Primary School and Mearns Primary School. As a result, the proposal offers clear educational benefits to children attending each of the three schools.

3.3 Almost all parents, pupils and staff who met with HM Inspectors support the proposal. These stakeholders share a clear understanding that the rolls of both Kirkhill Primary and Mearns Primary would exceed capacity in coming years as a result of housing developments in the area.

3.4 As well as increasing the number of non-denominational primary pupil places in the area, the proposal would also result in an increase in the number of places for three and four year old children in this area of Newton Mearns.

3.5 Although a majority of stakeholders support the proposal, a few parents expressed some concerns about the future provision of safe walking routes to the new school, particularly for those children who may have further to travel as a result of the proposed changes to catchment areas. In taking forward its proposal, the council should continue to work with stakeholders to ensure that safe walking and cycling routes are identified and promoted.

4. Summary

East Renfrewshire Council's proposal to establish a new non-denominational primary school and nursery class in Maidenhill, Newton Mearns has clear educational benefits. The proposal has the potential to provide children who will attend the new school with a modern, purpose-built building designed to meet the learning needs of its learners. The new school will enhance provision for early learning and childcare which will potentially benefit the wider community. The proposal will also ease pressure in indoor and outdoor facilities at Kirkhill and Mearns Primary Schools, both of which are already running at near-full capacity. Almost all stakeholders who met with HM Inspectors support the proposal. In taking its proposal forward, the council should continue to engage with stakeholders to ensure that safe routes to school for walking and cycling are clearly identified.

**HM Inspectors
Education Scotland
February 2017**

BLANK PAGE

East Renfrewshire Council: Education Department



Equalities Impact Assessment of New Policy

The general equality duty requires public authorities to have due regard to the need to:-

- Eliminate unlawful treatment;
- Advance equality of opportunity; and
- Foster good relations

across the following protected characteristics:-

- Age
- Disability
- Gender reassignment
- Sex and Sexual Orientation
- Marriage and Civil Partnership
- Pregnancy and Maternity
- Race
- Religion and Belief

1. Title of the new policy/proposal	Proposed future non-denominational Primary School provision in Newton Mearns South and establishment of a new non-denominational Primary School and Nursery Class at Maidenhill from session 2019-20 and beyond.
2. Description of the new policy/proposal	The purpose of the proposal is set out in the consultative document on page 9, paragraph 58.
3. Responsibility for implementing the policy	East Renfrewshire Council
4. In what way does the proposed new policy eliminate unlawful treatment of the protected characteristic groups:	<p>The vision of the Education Department, <i>Everyone Attaining, Everyone Achieving through Excellent Experiences</i>, is at the heart of the work that education department and school staff undertake as they seek to provide the highest quality education and services to develop all children and young people.</p> <p>There is a statutory requirement for every education authority to secure, for their area, adequate and efficient provision of school education. East Renfrewshire Council has organised the structure of school provision to ensure that children can attend their local catchment denominational or nondenominational Primary School, and can then progress to their local Secondary School. In providing adequate and efficient provision of school education, East Renfrewshire Education Department is required to take account of the relevant legislation and guidance.</p>

	<p>The Council also has a statutory duty to make adequate and efficient provision for preschool education for its area in respect of certain children. These children are defined as 'prescribed preschool children. A preschool child is prescribed during the period from the school term following their third birthday until the end of the school term before they are first eligible to attend primary school.</p> <p>The proposal sets out the council's plans to increase the number of non-denominational primary school places in Newton Mearns South to meet the demands for catchment places in this area. This would give greater long-term certainty of the availability of non-denominational primary school places for current and future East Renfrewshire residents.</p> <p>The increased number of early learning and childcare places in Newton Mearns would help to meet the demands of the residents in the area.</p> <p>Additional places for early learning and childcare would also build capacity across the area allowing for more opportunity to meet the demand for wraparound sessions, especially given the entitlement for 600 hours of early learning and childcare including providing an element of flexibility and help address the planned move to 1140 hours by 2020 in the local area.</p> <p>The Council is required to formally consult on changes to a delineated catchment area, establishing new schools and changes to the admissions arrangements, or the relocation of any school. How this is carried out and who must be consulted is clearly set out in the Schools Consultation (Scotland) Act 2010 as amended. This process ensures that all key groups are consulted with (see page 17, paragraph 116). Education Scotland also has a statutory role in the process.</p>
Age	<p>The proposal sets out how East Renfrewshire Council will provide some additional early learning and childcare places in the Newton Mearns area and ensure sufficient non-denominational primary places in the area.</p> <p>There would be no change to the transfer arrangements or the delineated catchment area for Mearns Castle High School. Under the proposal Mearns Castle High School would have an additional associated primary school.</p>
Disability	n/a

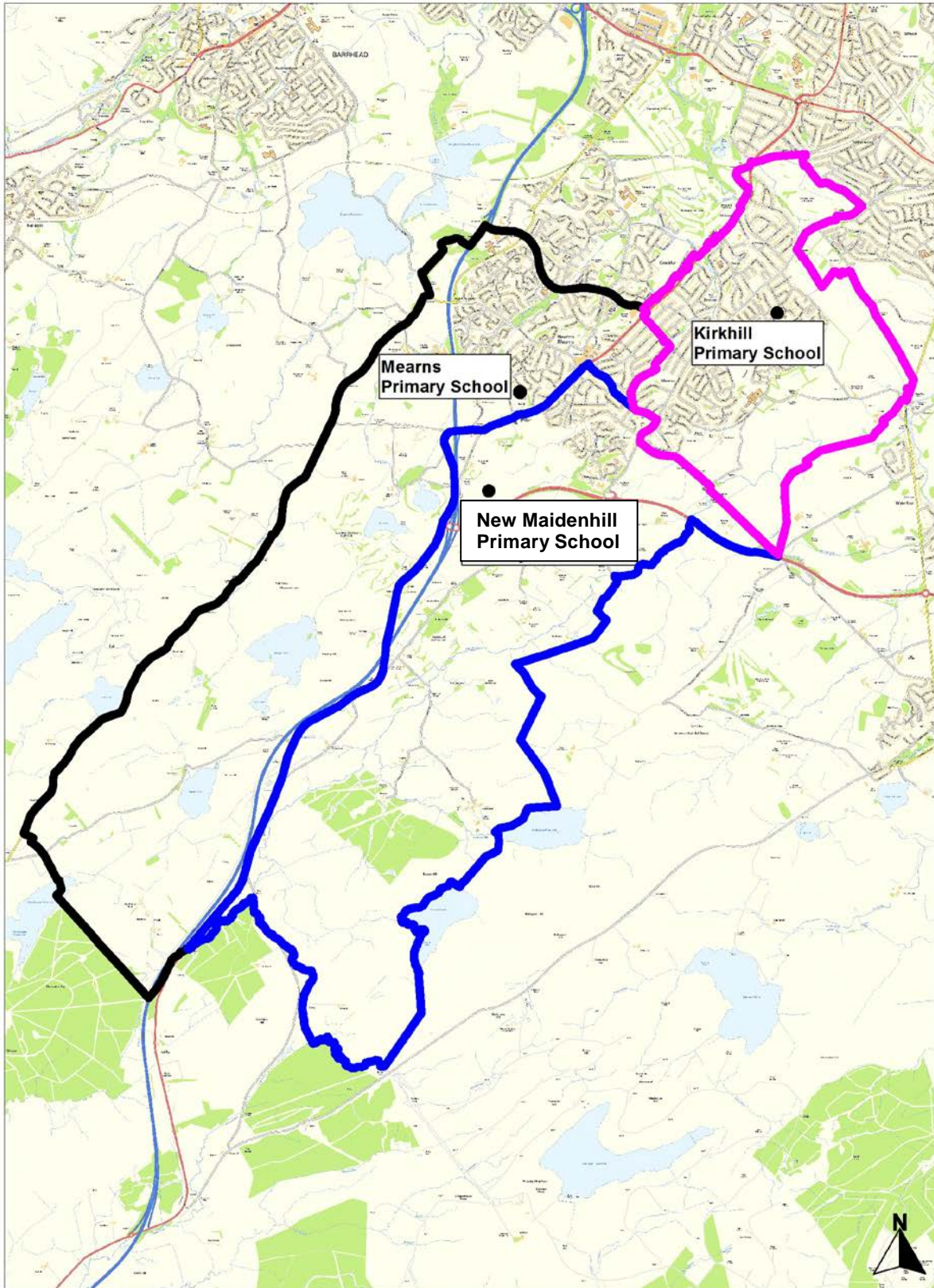
Gender reassignment		n/a
Sex and Sexual Orientation		n/a
Marriage and Civil Partnership		n/a
Pregnancy and Maternity		n/a
Race		n/a
Religion and Belief		n/a
5. In what way does the proposed new policy advance equality of opportunity for the protected characteristic groups:		<p>The proposed policy advances equality of opportunity for those children within ERC who attend an ERC primary School as they will be able to progress to their local secondary School in line with a 3-18 curriculum, supporting continuity, progression and transition.</p> <p>Providing an additional non-denominational primary school to serve the current Kirkhill and Mearns delineated catchments, would ease pressure on indoor and outdoor facilities at these schools.</p> <p>The accommodation and resources associated with the proposed new non-denominational primary school are also likely to have a positive impact on the motivation, aspirations and enjoyment of children, staff and wider school community. The proposed new school would provide flexible indoor and outdoor learning spaces and would be able to respond to the demands of <i>Curriculum for Excellence</i>.</p> <p>The increase in early learning and childcare provision in Newton Mearns should lead to more children accessing their early learning and care in one establishment in both their ante preschool and preschool years, thus reducing the need for additional transitions for very young children. It will also improve the transitions from nursery to primary with the aim of securing continuous and progressive learning experiences for children that build on prior learning. This would help to unify children's learning and care in the centre of their parent's choice.</p> <p>Should the proposal be accepted, more children would be within the recommended walking/cycling distances to school and thereby benefit through improved opportunities to promote positive attitudes to health and wellbeing.</p>

Age		As above
Disability		For pupils (staff and all building users) with additional support needs the new non-denominational primary would be fully compliant in terms of the Equality Act 2010 and provide specialist facilities to help meet their needs.
Gender reassignment		n/a
Sex and Sexual Orientation		n/a
Marriage and Civil Partnership		n/a
Pregnancy and Maternity		n/a
Race		n/a
Religion and Belief		n/a
6. In what way does the proposed new policy foster good relations with the protected characteristic groups:		The proposed new policy fosters good relations as it seeks to ensure that children within ERC will be able to attend their local primary School and to progress to their local secondary School in line with a 3-18 curriculum, supporting progression, continuity and transition.
Age		As above
Disability		n/a
Gender reassignment		n/a
Sex and Sexual Orientation		n/a
Marriage and Civil Partnership		n/a
Pregnancy and Maternity		n/a
Race		n/a
Religion and Belief		n/a
7. Potential for the proposed new policy to have a negative impact (Low, Medium, High) Low		If this is deemed to be high, the following section should be completed.

8. Evidence to be considered in relation to the protected characteristics.	
9. Evidence of higher or lower participation, uptake or exclusion by any group within the protected characteristics.	
10. In the context of the preceding sections, identify any groups whom you consider should be consulted. Please specify and give reasons.	
11. Actions to be taken to address any issues identified and ways in which positive impact can be demonstrated.	
12. Justification for the proposed new policy based on the above information.	
Name of Departmental Officer developing the proposed policy:- Maureen Sneddon - Quality Improvement Officer Mark Ratter – Head of Education Services	
Date of this assessment: <i>January 2017</i>	

BLANK PAGE

New Delineated Catchment Areas for Kirkhill Primary School, Mearns Primary School and Delineated Catchment Area for New Maidenhill Primary School, Newton Mearns Effective for School Session 2019-20 and Beyond



Reproduced by permission of Ordnance Survey on behalf of HMSO. (C) Crown Copyright and database right 2016. All Rights Reserved. Ordnance Survey Licence number 100023382 2016, East Renfrewshire Council.

Highlight of Parts of Delineated Catchment Area for
New Maidenhill Primary School, Newton Mearns
Effective for School Session 2019-20 and Beyond

