

# Whitelee windfarm

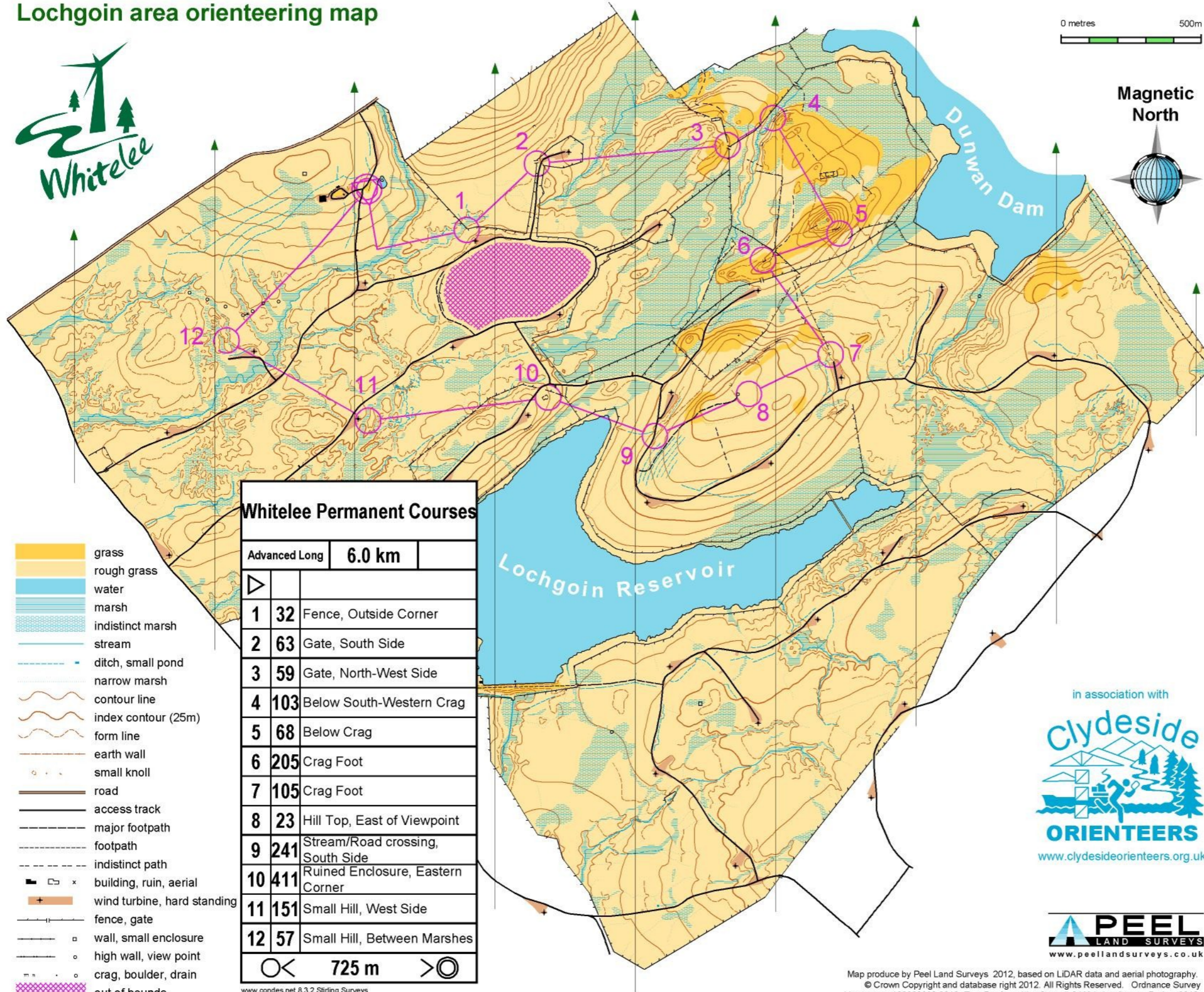
## Lochgoin area orienteering map



5m Contour Interval  
Scale 1:15,000

0 metres 500m

Magnetic North



### Whitelee Permanent Courses

Advanced Long		6.0 km
▷		
1	32	Fence, Outside Corner
2	63	Gate, South Side
3	59	Gate, North-West Side
4	103	Below South-Western Crag
5	68	Below Crag
6	205	Crag Foot
7	105	Crag Foot
8	23	Hill Top, East of Viewpoint
9	241	Stream/Road crossing, South Side
10	411	Ruined Enclosure, Eastern Corner
11	151	Small Hill, West Side
12	57	Small Hill, Between Marshes
◁	725 m	▷

- grass
- rough grass
- water
- marsh
- indistinct marsh
- stream
- ditch, small pond
- narrow marsh
- contour line
- index contour (25m)
- form line
- earth wall
- small knoll
- road
- access track
- major footpath
- footpath
- indistinct path
- building, ruin, aerial
- wind turbine, hard standing
- fence, gate
- wall, small enclosure
- high wall, view point
- crag, boulder, drain
- out of bounds

www.condes.net 8.3.2 Stirling Surveys  
Whitelee Permanent Courses v4 15.6.13

in association with  
**Clydeside**  
**ORIENTEERS**  
[www.clydesideorienteers.org.uk](http://www.clydesideorienteers.org.uk)

**PEEL**  
LAND SURVEYS  
[www.peellandsurveys.co.uk](http://www.peellandsurveys.co.uk)

Map produce by Peel Land Surveys 2012, based on LiDAR data and aerial photography.  
© Crown Copyright and database right 2012. All Rights Reserved. Ordnance Survey  
Licence no. 100023382 2012, East Renfrewshire Council © Whitelee Access Project 2012.

### Printing Instructions:

1. Set your printer to print to best quality or photographic (depending on your printers settings).
2. In Adobe Acrobat—click on the 'File' tab and go to 'Print'.
3. In 'Properties' - set 'Page Size' to A3 and 'Orientation' to 'Landscape'.
4. Click 'OK' to confirm these settings.
5. Back on the 'Print' page, go to 'Size Options' and set to 'Actual Size'.
6. Now print your map(s).

Please abide by the Scottish Outdoor Access Code and be considerate of other access users and land management operations.



If you notice any problems with the course or orienteering marker posts please contact the Whitelee Countryside Ranger Service at:

Tel: 0141 6140962

Email:

Whitelee-  
[crs@eastrenfrewshire.gov.uk](mailto:crs@eastrenfrewshire.gov.uk)