

EAST RENFREWSHIRE VIOLENCE AGAINST WOMEN PARTNERSHIP

EQUALLY SAFE IMPROVEMENT PLAN

2020-2023

sexual abuse, physical abuse, psychological abuse, domestic abuse, rape, incest, sexual harassment, bullying, intimidation, stalking, online abuse, commercial sexual exploitation, prostitution, lap dancing, stripping, pornography, human trafficking, child sexual exploitation, child sexual abuse, honour base violence, dowry related violence, female genital mutilation, forced marriage and honour crimes

**EAST RENFREWSHIRE VIOLENCE AGAINST WOMEN PARTNERSHIP
EQUALLY SAFE IMPROVEMENT PLAN 2020 – 2023**

CONTENT AND PAGE

FORWARD – KATE ROCKS 3	INTRODUCTION 4	KEY STATS 5	WHAT IS GENDER BASED VIOLENCE 6
VAW&G PARTNERSHIP 7	STRATEGIES & PLANS 8	EQUALLY SAFE VISION 9	OUR IMPROVEMENT PLAN 10
PERFORMANCE FRAMEWORK 16	GOVERNANCE & REPORTING 18	PLAN ON A PAGE 19	

1. FORWARD

The global pandemic COVID-19 – Violence against women and girls (VAW&G)

Since March 2020, we have seen a rapid period of transformation in terms of how our systems and services respond to people and communities facing the highest levels of risk and it is important that the good practice that emerges from this response is captured and built upon in the years to come.

There is no doubt that the COVID-19 pandemic has, and will continue to, place women, children and young people experiencing VAWG at increased risk of harm for the foreseeable future. It is anticipated that the number requiring crisis and recovery support will significantly increase as restrictions are lifted and there is a real risk that specialist support services may not be able to cope with increased demand due to funding and capacity constraints.

Recovering from the social and economic effects of COVID-19, and mitigating the long-term effects of trauma and abuse experienced by women, children and young people will require specific action to strengthen the capacity of our services and action across the whole system to ensure their recovery needs are recognised and addressed.

The Equally Safe in East Renfrewshire Improvement Plan is underpinned with a clear focus on recovery. It sets out how we will work collaboratively to achieve these aims and identifies the range of actions we will take to mitigate the risks and impact of COVID 19. In the longer term it will ensure an effective and sustainable approach to preventing, reducing and responding effectively to all forms of violence against women and girls.

Kate Rocks
Chair East Renfrewshire Violence Against Women Partnership

2. INTRODUCTION

'There is one universal truth, applicable to all countries, cultures and communities: violence against women is never acceptable, never excusable, never tolerable.'

Ban Ki-Moon, United Nations

It is important that everyone has a shared understanding of violence against women and girls. By this we mean the violent and abusive behaviour carried out predominantly by men directed at women and girls precisely because of their gender. Behaviour that stems from systemic, deep-rooted women's inequality, and which includes domestic abuse, rape, sexual assault, commercial sexual exploitation (including prostitution) and 'honour based' violence. Whatever form it takes violence against women and girls can have both an immediate and long-lasting impact on the women, children and young people directly involved. It is quite simply unacceptable. The definition of gender based violence which this strategy has adopted explicitly includes children of all genders as subject to harm through violence.

No single agency can address violence against women and girls in isolation by working together more effectively we can ensure that where violence against women/girls does occur, women, children and young people are provided with the right support at the right time. This improvement plan is underpinned by a recognition and commitment to partnership working, a shared understanding and approach to tackling violence against women and girls in East Renfrewshire.

500 DOMESTIC ABUSE INCIDENTS ARE RECORDED ANNUALLY BY THE **POLICE** IN EAST RENFREWSHIRE

80% OF INCIDENTS HAD A **FEMALE VICTIM** AND **MALE PERPITRATOR**

1000 WOMEN AND CHILDREN CONTACT EAST RENFREWSHIRE **WOMENS AID** SERVICES FOR SUPPORT ANNUALLY

1 IN 3 GIRLS REPORT SOME FORM OF **SEXUAL VIOLENCE** IN INTIMATE PARTNER RELATIONSHIPS

443 REFERRALS TO CHILDREN AND FAMILIES SERVICES ANNUALLY ARE **DOMESTIC ABUSE**

41% OF ALL CHILD PROTECTION REGISTRATIONS IDENTIFY **DOMESTIC ABUSE** AS A PRIMARY OR SECONDARY RISK FACTOR.

DOMESTIC ABUSE IS A SIGNIFICANT HARM TO CHILDREN & YOUNG PEOPLE IN EAST RENFREWSHIRE

95% OF RAPES OR ATTEMPTED RAPES HAD A FEMALE VICTIM

3. WHAT IS GENDER BASED VIOLENCE

Violence against women and girls encompasses (but is not limited to):

- physical, sexual and psychological violence occurring in the family (including children and young people), within the general community or in institutions, including domestic abuse, rape, and incest;
- sexual harassment, bullying and intimidation in any public or private space, including work;
- commercial sexual exploitation, including prostitution, lap dancing, stripping, pornography and trafficking;
- child sexual abuse, including familial sexual abuse, child sexual exploitation and online abuse;
- 'honour based' violence, including dowry related violence, female genital mutilation, forced and child marriages, and 'honour' crimes.

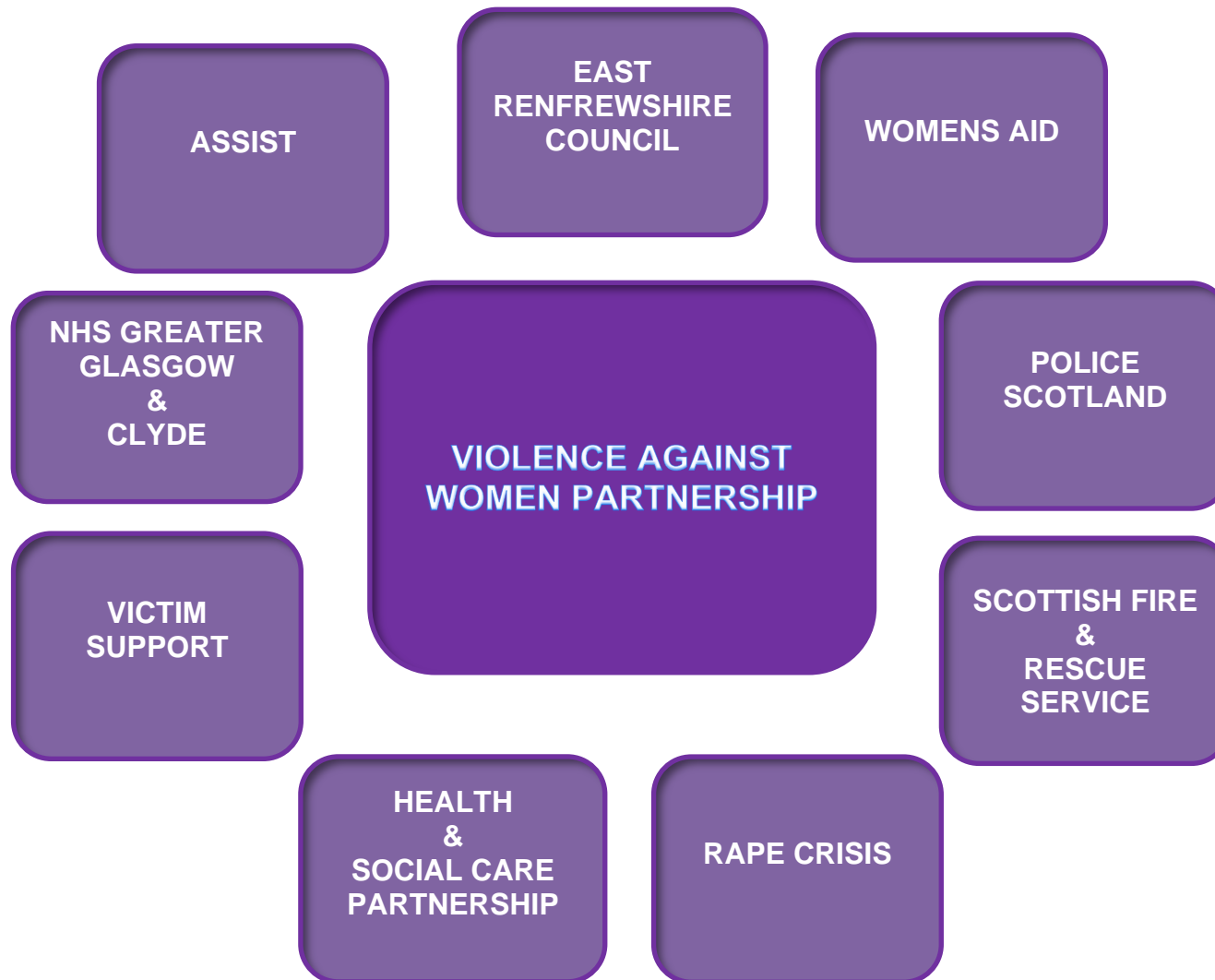
Equally Safe: Scotland's strategy to prevent and eradicate violence against women and girls 2016

Violence against men

The particular approach we are taking through Equally Safe brings a strategic focus to the issue of men's violence against women and girls, underpinned by the definition we have adopted and based on the principles of international law. A gendered analysis does not exclude men, but rather recognises that women and girls are disproportionately affected by particular forms of violence that they experience because they are women and girls. Men can be victims of many of the types of violence being discussed here, including domestic abuse, rape, sexual assault, harassment and childhood sexual abuse. East Renfrewshire's Violence Against Women Partnership believes it is vital that men who have experienced these forms of violence have access to the same high quality of support and services as women and children.

4. EAST RENFREWSHIRE VIOLENCE AGAINST WOMEN PARTNERSHIP

Violence Against Women Partnerships (VAW Partnerships) are the multi-agency mechanism to deliver on Equally Safe: Scotland's strategy for preventing and eradicating violence against women and girls at a local strategic level. The core partners are;



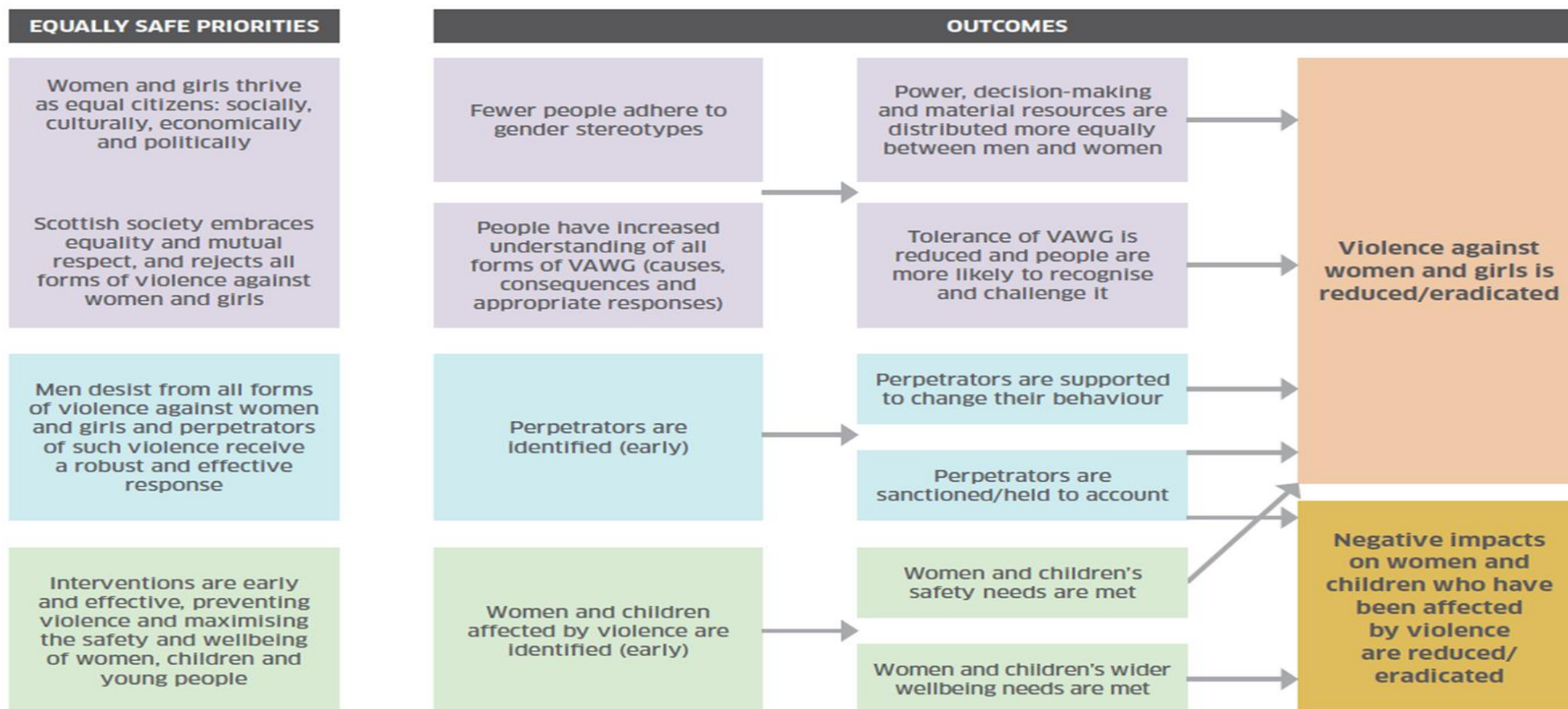
5. LINKS TO OTHER STRATEGIES

There are many existing partnerships and strategies throughout East Renfrewshire that are working towards and achieving outcomes to that relate to violence against women and girls and vice versa. The main strategies, plans and partnerships considered are highlighted below.



6. EQUALLY SAFE, VISION, PRIORITIES AND OUTCOMES

Equally Safe: Scotland's Strategy for Preventing and Eradicating Violence Against Women and Girls was launched in 2014 and revised in 2016. The strategy sets out the Scottish Government and COSLA's joint vision for a strong and flourishing Scotland where all individuals are equally safe and respected, and where women and girls live free from all forms of violence and abuse – and the attitudes that help perpetuate it. In order to achieve this, **Equally Safe** identifies four key priorities:



7. EAST RENFREWSHIRE EQUALLY SAFE IMPROVEMENT PLAN 2020 - 2023

OUTCOME 1: <i>Scottish society embraces equality and mutual respect, and rejects all forms of violence against women and girls</i>			
Our Aims			
<p>» Positive gender roles are promoted</p> <p>» People enjoy healthy, positive relationships</p> <p>» Children and young people develop an understanding of safe, healthy and positive relationships from an early age</p> <p>» Individuals and communities recognise and challenge violent and abusive behaviour</p>			
No	Critical Activity	When	Who
1.1	<p>Proactive engagement and communications take place in the local community to increase people’s awareness and understanding of the causes and consequences of gender based violence and the role they can play in tackling it:</p> <ul style="list-style-type: none"> • Participate and deliver local campaigns including 16 Days of Action annually. • East Renfrewshire Public Protection Conference. • Participate and deliver the White Ribbon campaign to increase the number of men and boys becoming actively involved in challenging negative attitudes and behaviours • Deliver Elected Member briefing and information Sessions • Deliver briefing and information sessions to community councils. 	2020-23	VAW Partnership/ER Communications Team/ER Public Protection Sub Group/Elected Members
1.2	Improve the awareness of and access to services which	2020-23	VAW Partnership/ER

	support women/children and young people affected by gender based violence.		Communications Team
1.3	Deliver comprehensive multi agency training to ensure that all learning needs and the spectrum of gender based violence is captured.	2020-23	Public Protection Sub Group/Public Protection Training Calendar
1.4	<p>Deliver age-appropriate, evidence-based interventions to raise children, teachers and parents' understanding and awareness of gender based violence, positive, healthy relationships and consent, as part of a whole school approach to tackling gender based violence.</p> <p>Deliver the Rape Crisis Sexual Violence Prevention Programme in schools, to increase understanding of consent and healthy relationships</p> <p>Support the dissemination and implementation of the new resource for early learning and childcare practitioners on promoting gender equality</p> <p>Deliver the Mentors in Violence Prevention Programme to ensure that young people better understand positive and healthy relationships and stand up to violence and toxic masculinity.</p>	<p>2020-23</p> <p>2020-23</p> <p>2020-21</p> <p>2020-23</p>	<p>Zero Tolerance/Rape Crisis Scotland/Education Scotland/ERC Education</p> <p>Rape Crisis Scotland/ERC Education</p> <p>Care Inspectorate/Zero Tolerance/ERC Education</p> <p>Violence Reduction Unit/ERC Education/VAW Partnership</p>

PRIORITY 2: Women and girls thrive as equal citizens: socially, culturally, economically and politically

Our Objectives

» Women and girls are safe, respected and equal in our communities

» Women and men have equal access to power and resources

No	What	When	Who
1.1	Strengthen the voices of survivors and participation to inform our response to gender based violence.	2020-23	VAW Partnership
1.2	Support our workforce with up to date guidance on gender based policy and pathways. All VAW partnership member organisations have an HR domestic abuse policy in place.	2020-23	VAW Partnership
1.3	Continuously monitor and evaluate practice to protect women, children and young people at risk of significant harm.	2020-23	VAW Partnership
1.4	Review existing systems to ensure accurate management information is obtainable, reported and rigorously analysed by the VAW partnership.	2020-23	VAW Partnership
1.5	Complete the Violence Against Women Partnership Equally Safe Quality Standards and Performance Framework (annually).	2020-23	VAW Partnership

PRIORITY 3: *Interventions are early and effective, preventing violence and maximising the safety and wellbeing of women, children and young people*

Our Objectives

- » Justice responses are robust, swift, consistent and coordinated
- » Women, children and young people access relevant, effective and integrated services
- » Service providers competently identify violence against women and girls, and respond effectively to women, children and young people affected

No	What	When	Who
1.1	Embed Sensitive Routine Enquiry (SRE) and referral to MARAC in key HSCP settings.	2020-23	HSCP
1.2	Embed Safe and Together across HSCP and partners.	2020-23	Children and Families Social Work/VAW Partnership
1.3	Embed Safe Lives Risk Assessment across HSCP and partners.	2020-23	Domestic Abuse Co-ordinator HSCP/ VAW Partnership
1.4	Ensure high quality, accessible accommodation options and support are available that meet the needs of women, children and young people affected by domestic abuse.	2020-23	ERC/Registered Social Landlords/Women’s Aid

1.5	Review the pathway to support women, children and young people's access to gender based violence services.	2020-23	VAW Lead Officer/VAW Partnership
1.6	<p>Ensure staff across education, youth work settings and partner agencies are equipped to respond to disclosures of gender based violence.</p> <p>Establish pathway in line with local child and adult protection procedures.</p>	2020-23	<p>Child and Adult Protection/Public Protection Sub Group</p> <p>Child Protection Policy & Procedures Sub Group/Public Protection Sub Group</p>
1.7	Regular multi-agency risk assessment conferences (MARAC) are in place for high risk domestic abuse victims and children.	2020-23	Domestic Abuse Co-ordinator/MARAC Oversight Group/VAW Partnership

Priority 4: Men desist from all forms of violence against women and girls and perpetrators of such violence receive a robust and effective response

Our Objectives » Justice responses are robust, swift, consistent and coordinated

» Men who carry out violence against women and girls are identified early and held to account by the criminal and civil justice system.

» Relevant links are made between the experience of women, children and young people in the criminal and civil system

No	What	When	Who
1.1	<p>Deliver multi agency training on the Safe & Together model to ensure that all responses to women and children affected by domestic abuse are underpinned by the following principles:</p> <ul style="list-style-type: none"> - Keeping the child safe & together with the non-offending parent; - Partnering with the non-offending parent as a default position; and - Intervening with the perpetrator to reduce risk & harm to the child. 	2020-23	Safe & Together Champions, Children and Families Social Work/HSCP
1.2	<p>Deliver high quality, evidence-based court and non-court mandated programmes that work with perpetrators of gender based violence to hold them to account for, and support them to change, their behaviours.</p>	2020-23	Criminal Justice Social Work/Children & Families/ HSCP
1.3	<p>Deliver multi-agency public protection arrangements which assess and manage perpetrators of gender based violence.</p>	2020-23	MAPPA/MATAC/MARAC

--	--	--	--

8. LOCAL PERFORMANCE INDICATORS

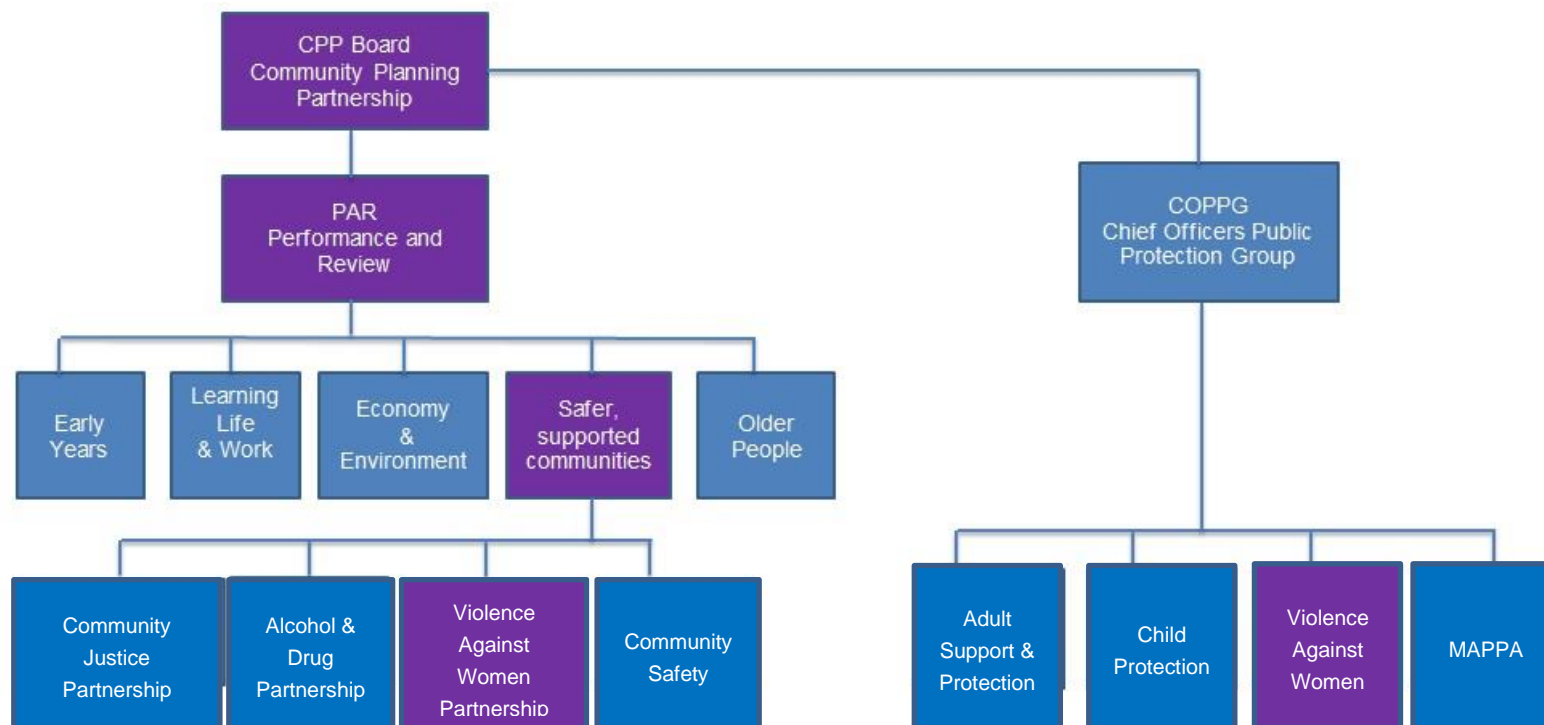
No	Indicator	Outcome	Source
8.1	Funding invested in preventing and eradicating VAWG at a local level	All	Violence Against Women Partnership
8.2	Total number of referrals/number of new referrals to VAWG support services	1,2,3	HSCP/Women's Aid/ASSIST/Rape Crisis
8.3	Average length of time women and children affected by VAWG need to wait to access specialist support services	3	HSCP/Women's Aid/ASSIST/Rape Crisis
8.4	% of women who report feeling safer as a result of the specialist support they have received.	3	HSCP/Women's Aid/ASSIST/Rape Crisis
8.5	% of women who report having increased levels of wellbeing as a result of the specialist support they have received	3	HSCP/Women's Aid/ASSIST/Rape Crisis
8.6	% of children who report feeling safer as a result of the specialist support they have received.	3	HSCP/Women's Aid/ Rape Crisis
8.7	% of children who report having increased levels of wellbeing as a result of the specialist support they have received	3	HSCP/Women's Aid/ Rape Crisis
8.8	Number and % of children referred to the children's reporter (domestic abuse)	3	HSCP – Children and Families

8.9	<p>Number and rate or incidents recorded by police, broken into the following categories:</p> <ul style="list-style-type: none"> • Domestic abuse with a female victim • Rape/attempted rape with a female victim • Sexual Assault with a female victim • Prostitution related crimes • Other sexual crimes 	1,4	<p>Domestic Abuse Recorded by the Police in Scotland</p> <p>Recorded Crime in Scotland</p>
8.10	<p>Number and Rate of men convicted of:</p> <ul style="list-style-type: none"> • Domestic abuse • Rape/attempted rape • Sexual assault • Prostitution related crimes • Other sexual crimes 	4	Criminal Proceedings in Scotland
8.11	% of crimes and offences in domestic abuse incidents detection rate.	4	Police Scotland
8.12	<p>No of referrals to specialist perpetrator interventions</p> <p>% of referrals who successfully complete specialist perpetrator programmes</p>	4	N/A

9. GOVERNANCE AND REPORTING

East Renfrewshire Violence Against Women Partnership is firmly established within East Renfrewshire Council's Community Planning arrangements and aligned with public protection partnerships arrangements including child protection, adult support and protection and Multi-Agency Public Protection Arrangements (MAPPA). The local structure is detailed below.

The Violence Against Women Partnership reports directly to the Chief Officers Public Protection Group and through existing community planning structures Outcome Four- Safer, supported communities.



APPENDIX 1. OUR IMPROVEMENT PLAN ON A PAGE

Outcome 1 Scottish society embraces equality and mutual respect, and rejects all forms of violence against women and girls	Outcome 2 Women and girls thrive as equal citizens: socially, culturally, economically and politically	Outcome 3 Interventions are early and effective, preventing violence and maximising the safety and wellbeing of women, children and young people	Outcome 4 Men desist from all forms of violence against women and girls and perpetrators of such violence receive a robust and effective response
We will work with partners and media to challenge attitudes and norms that contribute to violence against women and girls.	Our policies, procedures and practice will be informed by the views of women, children and their families who have experience of our services.	We will ensure women, children and young people access specialist, therapeutic, one to one support to meet their safety & wellbeing needs.	We will deliver multi-agency public protection arrangements which assess and manage perpetrators of abuse.
We will improve awareness of and access to services which support women/children and young people affected by gender based violence.	Our workforce will be supported with up to date guidance on gender based policy and pathways.	We will improve the multi-agency response to women and children affected by domestic abuse.	We will implement safe and together to ensure perpetrator pattern based, child centered, survivor strengths approach to working with domestic violence
We will deliver age-appropriate, evidence-based whole school interventions in schools.	Our practice will continuously be monitored and evaluated to protect women, children and young people at risk of significant harm	We will implement risk assessment and safety planning in relation to domestic abuse	We will deliver accredited court mandated programmes to reduce reoffending.

We will deliver multi agency training to ensure that all learning needs and the spectrum of gender based violence is captured.

We will review existing systems to ensure accurate management information is obtainable, reported and rigorously analysed.

We will deliver multi-agency risk assessment conference for high risk domestic abuse victims.

We will deliver accredited non court mandated programmes to reduce reoffending.

For further information contact:

Janice Thomson
Lead Planning Officer
Gender Based Violence and Community Justice

Mobile 07740456951
Email Janice.thomson@eastrenfrewshire.gov.uk

