

EAST RENFREWSHIRE COUNCILCABINET14 December 2023Report by Director of Business Operations & PartnershipsCommunity Learning and Development
Progress Update**PURPOSE OF REPORT**

1. The purpose of this report is to advise Cabinet of the positive impact of Year One and Two of the [2021-24 Community Learning and Development \(CLD\) Plan](#); seek approval for the Year Three plan; set out the timeline for developing the 2024-27 plan; and advise of Education Scotland's recent progress visit.

RECOMMENDATIONS

2. Cabinet is asked to:

- a) note the positive impact on communities from Years 1 and 2 of the Community Learning and Development Plan 2021 – 24 which had a flexible, tactical focus on pandemic response and recovery work (Annex 1);
- b) agree Year 3 of the plan (Annex 2);
- c) note the requirement to publish an updated CLD Plan for 2024-27 by September 2024; and
- d) note the positive findings from Education Scotland's progress visit in October 2023 (Annex 3)

BACKGROUND

3. Community Learning and Development (Scotland) Regulations (2013) require the production and publication of a 3 yearly plan of how youth work, adult learning and community capacity building/development services will be delivered by core CLD services and the wider Community Learning and Development Partnership.

4. The development of the 2021-24 CLD Plan was complicated by the pandemic. In light of the rapidly changing situation, it was agreed that the CLD services and partners would adopt a flexible approach to years one and two of the plan as part of the Council's approach to response and recovery, approved by Corporate Management Team. Operational yearly action plans identified how partners would adopt a universal and targeted approach to meeting the needs of residents in East Renfrewshire. Ongoing engagement and regular monitoring of the Action Plans has allowed the CLD plan to continually evolve, reflect and respond to the changing circumstances, needs and priorities of our communities.

5. While the impact of the pandemic is still ongoing, the position on the ground is now allowing CLD services and partners to resume strategic planning with greater certainty.

REPORT

Progress to Date

6. Annex 1 shows that the CLD Plan has had a strong and positive impact on communities over the last 2 years. Over 2022-23 it became clear that, while the impact of the pandemic is still being felt, increasingly services were beginning to return to business as usual. CLD partners continue to work together to deliver services which target those most in need.

Year 3 Plan & Next Steps

7. Annex 2 contains a draft Year 3 action plan for approval. The initial targets set for Year 3 of the plan were developed as a result of consultation and engagement with our communities and recognise the implications of the fragile and temporary nature of the funding environment for many of these services.

8. The existing CLD plan comes to an end in September 2024. Over the coming months consultation and engagement with communities, partners and staff will be undertaken to inform the focus (including the themes, priorities, and improvement actions) for the new CLD plan. The new plan will be aligned with Vision for the Future as well as key Education, HSCP and partner plans and strategies.

Education Scotland Progress Visit

9. To support improvement and provide external assurance of the quality of CLD provision in Scotland a three-day "Progress Visit" inspection model was introduced by Education Scotland (HM Inspectors of Education (HMIE)) in September 2023.

10. All 32 local authorities will be inspected using this model during 2023-24 and findings and feedback will be used to shape the establishment of the new, more detailed, five-day CLD Inspection process. This round of progress visits focuses on the extent to which local authorities are fulfilling their statutory duties in relation to CLD and includes their leadership, effectiveness, use of data, strategic focus and capacity to improve.

11. East Renfrewshire's progress visit took place in October 2023. HMIE published their findings in November 2023 highlighting areas of positive progress across all quality indicators (Annex 3). During the inspection they identified two areas of highly effective practice: Youth work in partnership with Barrhead High School and the Linking Communities approach used to oversee the Participatory Budgeting process. These case studies will be published by Education Scotland in due course.

12. During these visits 3 confidence statements are used to measure progress with East Renfrewshire CLD receiving the most positive statement rating. Education Scotland found that *"the local authority and their CLD partners are making sufficient progress with their CLD plan and have the capacity to continue to improve. As a result, HM Inspectors will take no further action in relation to this progress visit. During the inspection, we identified aspects of highly effective practice which we would like to explore further."*

CONSULTATION

13. Ongoing consultation and engagement with local residents including young people, partners and staff influenced the key themes and strategic focus for the current plan and work will begin in spring to identify the themes, priorities and focus for the new CLD Plan 2024-27.

PARTNERSHIP WORKING

14. CLD work involves partnership working between public bodies, community groups, individuals and the voluntary sector. CLD is always voluntary and learner led. The CLD Partnership has guided the development of the plan and subsequent yearly action plans and will continue to work together to further develop, strengthen and monitor the delivery of the plan over its life.

15. The current CLD Partnership membership includes:

- Voluntary Action East Renfrewshire (VAER)
- Community Learning and Development (CLD) (Business Operations and Partnerships)
- Adult Learning Services (Education)
- Education Department
- Economic Development & Inclusive Growth (Environment)
- Work EastRen Employability Services (Environment)
- East Renfrewshire Health and Social Care Partnership (HSCP)
- East Renfrewshire Culture and Leisure Trust (ERCL)
- West College Scotland
- Glasgow Clyde College
- East Renfrewshire Carers Centre
- Barrhead Housing Association (BHA)
- Include Me 2 (IM2C)
- Recovery Across Mental Health (RAMH)
- CORRA (Formerly Lloyds TSB Foundation)

16. Whilst each member continues to have its own specific purpose, the CLD Partnership aims to bring stakeholders together, as equal partners, to jointly assess needs, plan services, review outcomes and develop practice for the benefit of local learners and participants.

IMPLICATIONS OF THE PROPOSALS

17. Outcomes from year two of the action plan and ongoing engagement will influence the development of the action plan for year 3 that are responsive to the needs of the community.

18. A full Equality Impact Assessment (EQIA) was carried out in 2021 to ascertain and address any potential equality issues and a further EQIA will be prepared for the new plan in 2024.

19. CLD services have faced significant budget pressures and cuts over the last 14 years. This has resulted in a reduction in FTE and service delivery costs. During the pandemic, short term funding became available to recruit CLD staff and provide additional services to respond to the immediate impacts of Covid. The pandemic harms are still evident in our communities but there has been limited additional funding to continue to address these harms. As a result CLD will continue to face challenges which will have an impact on service delivery.

CONCLUSIONS

20. The CLD Plan and yearly Action Plans outline the themes identified by residents, partners, and CLD staff. By identifying the needs of our communities, along with the use of

high quality, robust, data and background information, the CLD Partnership will aim to target resources at those requiring most support. Where continued needs or trends have been identified, the partnership will work over the duration of this plan and future plans to put in place early intervention provision to reduce longer-term barriers for individuals, families and communities.

21. The key focus for CLD for Year 3 of the plan will be to continue to focus on:
- Working with strategic and operational partners to address the ongoing anti-social behaviour and risk taking behaviours than can lead to negative life outcomes.
 - Continuing to provide accreditation opportunities for young people which will contribute to closing the poverty related attainment gap.
 - Working alongside local communities to co-design processes which make our communities more inclusive and sustainable and enable residents to influence decisions.

RECOMMENDATIONS

22. Cabinet is asked to:

- a) note the positive impact on communities from Years 1 and 2 of the Community Learning and Development Plan 2021 – 24 which had a flexible, tactical focus on pandemic response and recovery work (Annex 1);
- b) agree Year 3 of the plan (Annex 2);
- c) note the requirement to publish an updated CLD Plan for 2024-27 by September 2024; and
- d) note the positive findings from Education Scotland's progress visit in October 2023 (Annex 3)

Director of Business Operations & Partnerships

REPORT AUTHOR

Susan Craynor, CLD Manager, Business Operations and Partnerships
susan.craynor@eastrenfrewshire.gov.uk

BACKGROUND PAPERS

CLD Plan Link
[Com Learning Dev Plan.pdf \(eastrenfrewshire.gov.uk\)](#)

CLD PARTNERSHIP RECOVERY IMPACT OVERVIEW

Year 1 – Recovery

Through the Requirements for Community Learning and Development (Scotland) Regulations, 2013 - Local authorities have statutory duties to work with partners and engage with communities to identify CLD need and secure 'adequate and efficient' CLD in their area.

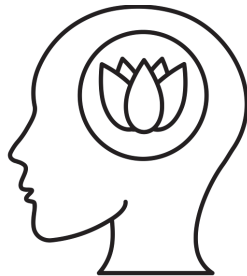
The aim of these duties is to:

- Ensure that communities across Scotland – particularly those that are disadvantaged – have access to the CLD support they need;
- Strengthen coordination between CLD providers at a local level
- Reinforce the role of communities and learners to shape CLD provision
- Articulate the important role and contribution of CLD

In line with Scottish Government and Education Scotland guidelines, this year one Action Plan will focus solely on recovery and renewal.

Health & Wellbeing

Over 1400 residents accessed health and wellbeing specific support which met their needs during 2021-22.



700 local residents re engaged with CLD provision in response to communities' aspirations to reconnect, come together and reduce social isolation.

CLD Partners delivered over 70 opportunities for more than 700 local residents to access social, recreational and learning opportunities through group work programmes.

Learning, Life & Work

Resident's employment status/opportunities were adversely impacted due to Covid – 19. CLD partners provided a range of employability supports to 957 individuals to enable them to meet employability learning needs and goals.

High levels of participants are reporting progress towards personal goals including: volunteering, accreditation, vocational training, employment and further activity programmes.

Over 170 residents participated in lifelong learning opportunities.

During the pandemic, the focus of youth work activity was to support the return to education and group work and focus on

improving mental health & wellbeing, this created fewer opportunities for young people to be accredited for their participation in youth work activities. However, 281 young people achieved 473 through accredited awards in 2021-22, this is a significant rise in figures from 2020-21 and shows steady progress in CLD's contribution to closing the attainment gap.

Strong & Resilient Communities

Grant making participatory budgeting events delivered and supported by CLD Partners has increased the opportunities for local decision making in East Renfrewshire. As a result 91 groups were successful in securing their share of £103,866 to deliver grass root community activities.



Our first ever youth led PB saw 14 youth groups access funding to provide them with new opportunities as they took steps to recover from the pandemic.

180 local residents in locality planning areas have engaged with the CLD Team about their communities as we recover from the pandemic. Early indications suggest a shift in local priorities, with a current focus on: cost of living crisis, opportunities for social interaction and health & wellbeing.

Over 90 new and existing community groups/organisations have been supported by CLD partners in 2021-22 to provide services in their local community.

Diversiory

Throughout 2021-22 detached youth work and targeted groups remained the focus for CLD team. In year 1, detached youth work staff made 3089 contacts with young people, supporting them on a range of issues including; alcohol & drugs, school transition and risk taking behaviour.

202 young people participated in diversionary activities telling us that these activities kept them from being bored, allowed them to socialise with friends, learned new things and pushed them outwith their comfort zones and provided an alternative to hanging about the streets.

Anecdotally involvement in diversionary activity and detached youth work is having a positive impact on the number of youth disorder calls to the police and community safety.

47 young people participated in pilot programme of group work exploring and challenging their risk taking behaviour and supporting them to make informed choices

Equality & Equity

289 local residents with protected characteristics have participated in 15 different group work programmes which have been designed and delivered by CLD partners to meet their needs

Digital

137 adult learners engaged in remote or blended learning opportunities in order to further develop their skills and progress their learning. CLD Partners have distributed 190 devices with ongoing support via digital champions available when required.

Early Years

143 parents have participated in a range of CLD programmes which provides access to peer support, literacy and numeracy learning and social interaction. Bookbug and other similar library based family activities have attracted over 5500 attendances at sessions.

137 have participated in targeted early intervention and prevention opportunities focusing on sexual health and wellbeing, healthy relationships and gender based violence.

Other Highlights

This year young people through their involvement in the Duke of Edinburgh programme completed 9,802 hours of volunteering which has a social value of £45285.24



Include Me 2 delivered a Community event to mark the Queen's Jubilee providing members of the public the opportunity to reconnect with their community through a range of activities, services and signposting with over 7000 people in attendance.

When asked what they got from taking part in ER Culture and Leisure's Holiday Sports Camps in the summer 95% of young people reported that they tried new a activity with 92% making new friends and 99% saying they enjoyed it and had fun.

Barrhead Housing Association (BHA) delivered food waste cooking workshops to 73 households with a household membership of 236.

93% of participants in Adult Learning Services/Clyde College/ West College Scotland employability related learning programmes reported progress towards their work related learning goals. Courses included Core Skills for Work, ESOL for Work, Adult Literacies for Work, SQA ESOL, SQA IT and Working in Early Learning & Childcare.

Voluntary Action East Renfrewshire (VAER) provided one – one support to almost 70 groups and organisations to provide services in their local community.

Work East Ren supported 218 residents into vocational training and or employment.

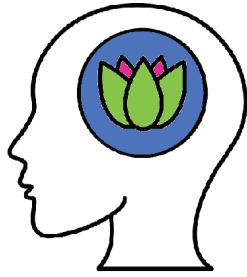


CLD PARTNERSHIP IMPACT OVERVIEW

Year 2

Health & Wellbeing

In response to the findings outlined in the Pandemic Impact Social Research and in dialogue with local people there has been a continued growth in health and wellbeing opportunities, with more than double the number of activities delivered by CLD partners in 22/23. Over **5000** local people have participated in meaningful activities which are needs led and responsive. Consistent and regular participation is resulting in the development of positive relationships, improved community connections and reducing social isolation and in turn is having a positive impact on the physical and mental wellbeing of local people.



The CLD team have contributed to the Personal Social Health Education (PSHE) curriculum in secondary schools with over **1000** young people have participating in bespoke health and wellbeing sessions designed and delivered by CLD staff.

Building on the 2022 Queens Jubilee Event, the Include Me 2023 Family Fun Day, and Festival of Cycling provided a fun filled community event attracting **8379** people. Attractions included live music, fairground rides, activity and information stalls. Feedback throughout the day highlighted the importance of community activities and the opportunity for local residents to come together and connect with organisations and activities in their local area.

Adult Learning Services responded to changing global situations and provided English language and literacy programmes for people arriving in East Renfrewshire from Ukraine, Hong Kong and Afghanistan. We provided a range of learning programmes and integration activities for adults and families including SQA ESOL, ESOL for Work, a STEM Café and Board Game Café that led to positive outcomes across different areas of their lives.

Learning, Life & Work

More than double the number of residents have participated in a range of lifelong learning and employability opportunities in 22/23. These person centred programmes targeted people from priority groups including care experienced young people, disabled parents, and those furthest away from the employment market.

Participants are progressing towards personal goals and increasing their knowledge and skills in a range of areas including literacy and numeracy, ESOL, sector specific vocational training and learning for personal development and fun. Achievements include;

774 young people gaining **1408** awards in school and in the community, recognising their learning and achievements. This is a significant increase in the number of awards being achieved through youth work including young people achieving 3 or more awards and are close to returning to pre pandemic figures.

627 people engaging with employability services throughout 2022-2023 with **125** people gaining a qualification.

153 adult learners working towards their personal learning goals with 98% reporting improved skills and confidence. There has been an increase in the number of participants engaging in opportunities which enhance their skills for learning life and work.

Strong & Resilient Communities

In 22/23 more than **7000** people have influenced how local budgets and grants are allocated. This includes over **3700** people casting their votes for grant making Participatory Budgeting (PB) which has resulted in more than **£300,000** being distributed to local community groups and voluntary organisations. This is a significant increase in the amount of funding allocated for grant making PB since 21/22.



This year there has been over **6000** contributions made by local residents to identify issues and priorities in their communities. Consultation and engagement has identified emerging themes including health and wellbeing, transport, activities for young people, cost of living, and local pride. These themes will directly influence the development of Locality Plans and Local Action Plans.

Over **100** new and existing community groups and organisations have received support in a range of topics including funding, governance and committee skills. As a result groups are developing their capacity to address issues that are important to them and their communities.

Diversionsary

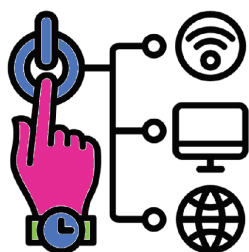
In 22/23 diversionsary youth work remained a priority for CLD with more than:

- **3100** contacts made with young people across East Renfrewshire through detached youth work. Young people have accessed support on a range of issues including harm reduction, dangers of weapons and sexual health information and consent.
- **300** young people have taken part in holiday programmes, group work activities and youth clubs. This has provided them with the opportunity to socialise with peers, learn new skills, have new experiences and provide an alternative to hanging about the streets.
- **100** young people participated in our Safer Choices programme in school and in the community. This allowed them to explore and challenge their own and others risk taking behaviours and make informed choices.

As a result of increased concerns in relation to young people and antisocial behaviour in the Barrhead area, CLD have worked alongside a range of community safety partners to provide a targeted response to concerns. This has included an increased detached youth work presence, changes to opening times of youth work facilities and targeted interventions for young people involved in or on the fringes of this behaviour. Feedback from partners tells us that this approach has had a positive impact on young people and the wider community. Young people and their parents report that through their involvement young people feel supported and more able to make positive decision about their lives.

Equality & Equity

674 local residents from priority groups have benefitted from needs-led community activities. These opportunities include activities for those with additional support needs, those from the LGBTi community and a new group for unaccompanied young people. These opportunities target some of our most excluded members of our community and are resulting in reduced social isolation, safe spaces and developing new relationships.

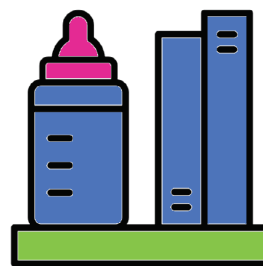


Digital

Over **1000** residents have improved their skills and confidence in using digital devices for personal, family, work and community related activities through a variety of learning programmes.

Early Years

The partnership is reaching more children, young people and families through a variety of different programmes including Imagination Library, Bookbug and local community events. Participation in



Bookbug sessions across East Renfrewshire have more than doubled with almost **22,000** attendances in 22/23.

There has been an increase in the number of young people supported in prevention and early intervention programmes. **214** young people have developed their knowledge and understanding of sexual health, parenting, relationships and gender based violence.

Other Highlights

West College Scotland and Adult Learning Services brought about a positive return to face to face SQA courses within East Renfrewshire.

Barrhead Housing Association delivered a Tenancy Sustainment course to **250** young people. This course included information on budgeting, utilities, shopping, cooking on a budget, housekeeping and home safety.

Voluntary Action East Renfrewshire (VAER) provided one – one support to almost **70** groups and organisations to provide services in their local community.

Work East Ren supported **218** residents into vocational training and or employment.

Three hundred and seventy five local residents attended the summer events held by Happy Dunterlie. This community led partnership provided activities for children, young people and their families which developed new skills and provided new experiences.

RAMH Recovery College had a significant Impact on their participants with **83 %** of those completing evaluations stating that they saw an improvement in their mental health and wellbeing.



**Community Learning & Development Partnership
Year 3 Action Plan
(2023-2024)**

CLD Partnership Action Plan Year 3 (2023-2024)

CLD Requirements

Through the Requirements for Community Learning and Development (Scotland) Regulations, 2013 - Local authorities have statutory duties to work with partners and engage with communities to identify CLD need and secure 'adequate and efficient' CLD in their area. The aim of these duties is to:

- Ensure that communities across Scotland – particularly those that are disadvantaged – have access to the CLD support they need
- Strengthen coordination between CLD providers at a local level
- Reinforce the role of communities and learners to shape CLD provision
- Articulate the important role and contribution of CLD.

All local authorities are required to develop 3 year strategic CLD Plans.

CLD Partnership

There is an established CLD Partnership who are responsible for delivering the plan. The partnership meet regularly to develop and monitor yearly Action Plans and report on performance on each of the priorities. Membership of the CLD Partnership includes:

Voluntary Action East Renfrewshire	CORRA Foundation	Education Department
Community Learning and Development	Adult Learning Services	West College Scotland
Economic Development & Inclusive Growth	Work EastRen Employability Services	East Renfrewshire Carers Centre
East Renfrewshire Health and Social Care Partnership	Barrhead Housing Association	Include Me 2
East Renfrewshire Culture and Leisure Trust	Glasgow Clyde College	Recovery Across Mental Health

Year 3 Priorities

In Year 3 of the plan the CLD Partnership will continue to deliver services and activities across the 7 identified priorities. To ensure that services meet the needs of communities the partnership will also continue identify gaps and opportunities for joint working.

We will also begin to undertake consultation and engagement with the community, partners and staff to inform the development of the CLD plan 2024 – 2027.

Priorities and Critical Activities

Priority – Health & Wellbeing

Critical Activity 1: Enhancing opportunities for local people to come together in a range of settings which fosters community connections, reduces social isolation and allows residents to socialise, learn and participate.

Critical Activity 2: Delivering a range of programmes and activities to groups and individuals that support and promote positive health and wellbeing including mental health.

Priority – Learning, Life & Work

Critical Activity 1: Providing a range of opportunities to meet the employability related learning needs of local residents including skills development, accreditation and volunteering.

Critical Activity 2: Working with a range of partners to ensure that lifelong learning opportunities are available and accessible and meet the needs and aspirations of local residents.

Critical Activity 3: Supporting residents to identify their own learning goals and where appropriate access wider accreditation opportunities to recognise their achievements.

Priority – Strong & Resilient Communities

Critical Activity 1: Supporting communities to build the skills, confidence and expertise of local people to participate as equal partners in a range of community led decision-making processes, including Participatory Budgeting and Locality Planning.

Critical Activity 2: Working with a range of community planning partners to ensure communities are involved in the planning, design and delivery of local services and can influence decision making on matters that are important to them.

Critical Activity 3: Supporting community groups and organisations to restart and re-establish as part of the Covid recovery and renewal.

Critical Activity 4: Working alongside community organisations and local residents to identify new and emerging needs and support for the community and voluntary sector to build back from the pandemic.

Critical Activity 5: Empowering young people to influence the implementation of the UNCRC across all areas of the councils work.

Priority – Diversionary

Critical Activity 1: Providing community based youth work across East Renfrewshire which is informed by local data and meets the needs of young people (ODP 4.2).

Critical Activity 2: Delivering a targeted street work programme including a new problem solving detached youth work response to engage young people and help address anti-social and risk taking behaviour (ODP 4.2).

Critical Activity 3: Strengthening links with partners to support the planning and delivery of youth work opportunities.

Critical Activity 4: Providing opportunities for young people to explore and challenge their risk taking behaviours and support them to make informed choices

Priority – Equality & Equity

Critical Activity 1: Strengthening partnerships to connect and engage with priority groups and those with protected characteristics, to establish a role for CLD.

Critical Activity 2: Connecting and engaging with priority groups and those with protected characteristics to ensure that the needs of these groups are understood and met.

Critical Activity 3: Supporting priority groups and those with protected characteristics to influence change.

Critical Activity 4: Providing targeted CLD support for priority groups and those with protected characteristics which provide peer support and opportunities to socialise, learn and participate.

Priority – Digital

Critical Activity 1: Continuing to develop the CLD learning offer using remote and blended approaches to meet the needs of residents.

Critical Activity 2: Identifying residents who are digitally excluded and source opportunities to meet their digital needs.

Critical Activity 3: Providing support to those who receive devices to ensure they can maximise its full potential.

Critical Activity 4: Delivering a range of accessible digital learning opportunities which meet resident's needs, goals and aspirations, including, engaging with and accessing services.

Priority – Early Years & Family Learning

Critical Activity 1: Working in partnership with a range of services to plan and deliver needs led programmes for parents, parents to be, and families.

Critical Activity 1: Providing opportunities for families to learn together and for parents to develop the skills and knowledge required to support their children's learning.

Critical Activity 3: Providing support to targeted young people around unplanned or underage pregnancy.

Critical Activity 4: Working alongside local groups and individuals to identify the need for community led groups and peer support networks.

Critical Activity 5: Supporting local groups and individuals to build their skills and capacity to deliver community led groups for parents and carers in their area.

Priority – Health & Wellbeing

Critical Activity 1: Enhancing opportunities for local people to come together in a range of settings which fosters community connections, reduces social isolation and allows residents to socialise, learn and participate.

Action	Lead	Success Measure	2020-2021 Results	2021-2022 Results	2022-2023 Results	2023-2024 Targets
Provide activities to bring local residents together for social, recreational and learning opportunities.	Community Learning and Development <i>Lead officer/s</i> Susan Craynor Emma Ball Kelly Giudici	No. of groups and opportunities No. of participants	16 groups 258 participants	26 groups 393 participants	28 groups 483 participants	28 groups 500 participants
	Adult Learning Services <i>Lead officer</i> Jennifer Nicol		15 groups 155 participants	17 groups 141 participants	23 groups 156 participants	30 groups 200 participants
	Clyde College <i>Lead officer</i> Sheila White		11 groups 55 participants	11 groups 80 participants	11 groups 80 participants	11 groups 80 participants
	West College Scotland <i>Lead officer</i> Paul Martin		5 groups 15 participants	5 groups 15 participants	6 groups 19 participants	5 groups 25 participants
	Voluntary Action East Renfrewshire <i>Lead officer</i> Linda McCullagh		0 <i>(Venues Closed during pandemic)</i>	11 groups 68 participants 25 volunteers	21 groups 574 participants 20 volunteers	23 groups 600 participants 20 volunteers
	ER Carers Centre <i>Lead officer</i> Lorraine Nelson		3 groups 50 participants <i>(online support due to pandemic restrictions)</i>	5 groups 10 courses 140 participants	8 groups 12 courses 190 participants	6 groups 12 courses 182 participants

140

	Include Me 2 <i>Lead officer</i> <i>Paul McIlvenny</i>		0 <i>(No event)</i>	1 event 7000 participants	1 events 8379 participants	2 events
	CORRA <i>Lead officer</i> <i>Gordon McLean</i>	No. of groups No. of activities becoming community-led	0 <i>(Venue Closed during pandemic)</i>	6 groups 3 groups	6 groups	3 Groups 3 Activities/Events
	RAMH Causeway & ER Recovery College facilitated by RAMH <i>Lead officer</i> <i>Lee Millar</i>	No. of groups Causeway	Groups varied dependent on the restrictions. If in full restrictions then membership fell as people either could not or did not want to engage online	14 groups	24 groups	30 groups Recovery college funding ended 2022
		Use of Short Warwick Edinburgh Mental Wellbeing Scale (SWEMWEBS) to measure increase to wellbeing after participating in Causeway Supports or ER Rec College course	Use of Short Warwick Edinburgh Mental Wellbeing Scale (SWEMWEBS) to measure increase to wellbeing after participating in Causeway Supports or ER Rec College course	In a snap shot of beginning and mid SWEMWBS scores for Aug 22 there was a 6 % improvement in wellbeing from beginning of support to week 6 of physical activity	SWEMWBS embedded into assessments and reviews	175 participants
		Increase in no. of peer trainees within the college that allow for those with lived experience to share their recovery and inspire others	<i>Information not available</i>	5 peer trainees	5 peer trainees	Recovery college funding ended 2022
	“Root Cause” <i>Lead officers</i> <i>Gary Morton</i>	No. of participants, schools and community uptake.	0 <i>(New project 2021/22)</i>	Funding Secured	168 participants	<i>Awaiting confirmation of targets</i>

				Participation by all Thorliebank Primary School Classes		
Critical Activity 2: Delivering a range of programmes and activities to groups and individuals that support and promote positive health and wellbeing including mental health.						
Actions	Lead(s)	Success Measures	2020-2021 Results	2021 – 2022 Results	2022 – 2023 Results	2023 -2024 Targets
Provide HWB activities in local communities that respond to needs and interests.	CLD <i>Lead officer/s</i> Susan Craynor Emma Ball Kelly Giudici	No. of opportunities No. of participants	16 groups 381 participants <i>(figures are higher due to one off events targeting full school year groups on their return to school and 2nd lockdown)</i>	12 groups 126 participants	37 opportunities 304 participants <i>(in addition 953 young people have participated in one off learning activities through PSHE)</i>	36 opportunities 305 participants
	ER Carers Centre <i>Lead officer</i> Lorraine Nelson		<i>No information available</i>	6 groups	6 groups 157 participants	6 groups 85 participants
	Adult Learning Services <i>Lead officer</i> Jennifer Nicol		1 groups 8 participants	1 group 6 participants	3 groups 12 participants	3 groups 15 participants
	Education (No One Left Behind) <i>Lead officer</i> David Gordon		2 groups <i>No information available</i>	2 groups <i>No information available</i>	2 groups 4 participants	3 groups
	Include Me 2 <i>Lead officer</i> Paul McIlvenny	No. of sessions No. of participants No. of opportunities for children, young people, adults to participate in programmes that focus on health and wellbeing.	<i>No information available</i>	446 sessions 183 participants 7 programmes	1117 sessions 596 participants 22 programmes	1117 sessions 596 participants 22 programmes
	East Renfrewshire Culture and Leisure Libraries Core Library Programme <i>Lead officer</i>	No. of participants	<i>No information available</i>	71 participants (Apr – Jun 2022)	Children 3922 Adults 2579	<i>Awaiting confirmation of targets</i>

	<i>Gary Morton</i>				Total 6501 (During 22/23 there has been a change to how this data is gathered. This measure is now focused on attendances).	
	ERCL Holiday Sports Camps <i>Lead officers Gary Morton</i>	No. of participants Participants have tried a new activity, feel more confident, had fun, and made new friends.	183 individuals (Easter) 331 individuals (Summer) <i>No information available</i>	Individuals 21/22 Easter - 276 Summer – 445 Outcomes: <i>Tried a new activity</i> Spring (84%) Summer (95%) <i>More confident trying new activities</i> Spring (84%) Summer (91%) <i>Made new friends</i> Spring (84%) Summer (92%) <i>Enjoyed & had fun</i> Spring (100%) Summer (99%)	Individuals 22/23 April - 302 Summer - 673 October – 83 Outcomes: <i>Tried a new activity</i> April (91%) Summer (92%) October – pending <i>More confident trying new activities</i> April (90%) Summer (82%) October – pending <i>Enjoyed & had fun</i> April (97%) Summer (95%) October - pending	Spring - 300 Summer - 670 October – 80 All camps ay 90% capacity
	CORRA <i>Lead officer Gordon McLean</i>	No. of community led groups No. of participants	<i>No information available</i>	2 groups 15 participants	3 groups 20 participants	2 groups 20 participants

	RAMH Causeway <i>Lead officer Lee Millar</i>	No. of community supports No. of participants No. of participants demonstrating an increase in wellbeing using SWEMWEBS	<i>No information available</i>	19 supports 199 participants 6% improvement for people who used physical activity and had a beginning and mid score recorded	25 supports 328 referrals to Community service 368 referrals to Counselling 1/9/22 – 31/8/23 Can be difficult to get reliable change as not everyone completes reviews.	25 supports 650 participants Increase in end scores captured and better way to demonstrate impact.
BHA Community Investment Projects	Barrhead Housing Association <i>Lead officer Bryan Dando</i>	No. of sessions No. of participants	No Baseline – new project 2021/22	140 sessions 164 participants	221 participants	300 participants
Work in partnership with organisations to signpost and deliver programmes, supports and/or activities that improve young people's mental health.	Community Learning and Development <i>Lead officer/s Susan Craynor Emma Ball Kelly Giudici</i>	No. of young people supported in CLD programmes through Healthier Minds Screening Hub	No Baseline – new project 2021/22	41 young people	29 young people	CLD are unable to influence or predict the number of young people referred to them
	East Renfrewshire Culture and Leisure/Health and Social Care Partnership <i>Lead officer Gary Morton</i>	No. of young people in care registered in the "For Your Entertainment" programme	54 registered participants accessed activities (2019/20)	115 participants	295 participants	<i>Awaiting confirmation of targets</i>
	ER Carers Centre <i>Lead officer Lorraine Nelson</i>	No. of young people accessing support	<i>No information available</i>	100 young people	108 young people	120 young people

Priority – Learning, Life & Work

Critical Activity 1: Providing a range of opportunities to meet the employability related learning needs of local residents including skills development, accreditation and volunteering.

Action	Lead	Success Measure	2020-2021 Results	2021-2022 Results	2022-2023 Results	2023-2024 Targets
Building on existing learning opportunities, further develop and create appropriate opportunities to meet local needs.	Work EastRen <i>Lead officer Emma Aepli</i>	No. of people engaging with keyworker employability services (Work EastRen) No. of people in employment including self-employment following support No. of people supported to gain a qualification or complete a course No. of people into volunteering	<i>No information available</i>	26 people 192 people 26 people N/A	627 people 237 people 125 people 21 people	600 people 200 people 125 people 30 people
	Adult Learning Services, Clyde College and West College Scotland <i>Lead officer Jennifer Nicol Sheila White Paul Martin</i>	Percentage of participants reporting improved skills and confidence in relation to identified work related learning goals as a result of participation.	100% participants reported progress towards their work related goals	93% participants reported progress towards their work related goals	95% of participants reported progress towards their work related goals	95% of participants reporting progress towards their work related goals
	Include Me 2 <i>Lead officer Paul McIlvenny</i>	No. of people accessing vocational training and into employment.	<i>No information available</i>	38 trainees 100% progressed towards their personal goals.	75 trainees 100% progressed towards their personal goals.	75 trainees 100% progressing towards their personal goals

145

	RAMH Causeway - Employability Service <i>Lead officer</i> <i>Lee Millar</i>	Increase in no. of people engaging	N/A – we were not involved at this stage	138 referrals	152 referrals	160 referrals
	Community Learning and Development <i>Lead officer/s</i> <i>Susan Craynor</i> <i>Emma Ball</i> <i>Kelly Giudici</i>	No. of programmes No. of participants	4 programmes 65 participants	7 programmes 34 participants	8 opportunities 110 participants	10 opportunities 115 participants
	East Renfrewshire Culture and Leisure (Sports Leadership Development Initiatives) <i>Lead officers</i> <i>Gary Morton</i>	Sports Leadership Academy No. of participants Participants completing the programme Participants gaining award (change in measure) UWS Phys. Ed. Partnership No. of participants Participants completing the programme Participants gaining employment.	No information available	21 participants 86% (18) completed the programme 55% (10) secured employment 20 participants 100% completed the programme 10% (2) gaining employment	20 participants 100% completing the programme. 15% (3) secured employment 19 participants 100% completed the programme	No targets set 100% complete the programme 50% of participants gain award Change in measures for Year 3 80% of participants agree: Better sense of working in this field More confident in gaining employment
	Community Learning and Development <i>Lead officer/s</i> <i>Susan Craynor</i> <i>Emma Ball</i> <i>Kelly Giudici</i>	No. of volunteering hours completed by DoFE participants	7,631 hours of volunteering Value of £35721.05	9,802 hours of volunteering Value of £45285.24	11,622 hours of volunteering Value of £55892	DoFE Scotland do not set targets on the social value status of volunteering.

<p>Support local residents to access and successfully participate in volunteering opportunities.</p>	<p>Voluntary Action East Renfrewshire <i>Lead officer Linda McCullagh</i></p>	<p>No. of volunteers registered.</p>	887 people	222 people	155 people	200 people
		<p>No. of volunteers suitably matched</p>	435 volunteers	206 volunteers	128 volunteers	180 volunteers
	<p>East Renfrewshire Culture and Leisure (Library Volunteering) <i>Lead officers Gary Morton</i></p>	<p>No of volunteers</p>	<p>Summer Reading Challenge Volunteers (12-16 y/o)</p> <p>17 volunteers (2019/20)</p> <p>Library Housebound Service Volunteers - New initiative</p> <p>Macmillan Project East Ren 30 volunteers recruited & trained in 2019/20 (10 not deployed due to Lockdown)</p>	<p>30 volunteers (2021/22)</p> <p>10 volunteers delivering books to residents as of Jul-22</p> <p>17 volunteers recruited & trained by 2021/22</p>	<p>Numbers pending</p> <p>10 volunteers delivering books to residents as of Aug-23</p> <p>As of August '23: - 9 cancer information and support volunteers - 3 gentle movement volunteers - 1 complementary therapies volunteer (new role)</p>	60 volunteers
<p>RAMH Causeway <i>Lead officer Lee Millar</i></p>	<p>New target 2023/24</p>		<p>New target 2023/24</p>	<p>New target 2023/24</p>	3 volunteers	
<p>DYW School Coordinators and partners support to young people to meet their aspirations and reach a positive destination</p>	<p>Education NOLB/ Developing Young Workforce/Vocational Education <i>Lead officer David Gordon</i></p>	<p>No. of young people who reach a positive destination</p>	<p><i>No information available</i></p>	<p>DYW wider opportunities reported through RUBI</p> <p>Destinations reported via SDS through National</p>	<p>97.7% of young people aged 16 – 19 years, currently in education, employment or training</p>	<p>At least 97.7% of 16-19 year olds will be participating in 2024 as recorded in the APM.</p>

				Data Hub Annual Participation Measure and Initial Leaver Destination report		At least 95.5% of 16-19 year olds in Quintile 1 will be participating. At least 98.5% of 16-19 year olds in Quintile 5 will be participating.
Continue to develop opportunities for young people obtain wider accreditation and contribute to closing the poverty related attainment gap	Community Learning and Development <i>Lead officer/s</i> <i>Susan Craynor</i> <i>Emma Ball</i> <i>Kelly Giudici</i>	No. of awards No. of young people achieving an accredited award No. of young people achieving 3 or more awards No. of young people achieving awards who reside in SIMD 1 -3 No. of awards achieved by care experienced young people	230 awards 150 young people 16 young people 3+ awards 2 young people from SIMD 1-3 7 awards	473 awards 281 young people 35 young people 3+ awards 28 young people from SIMD 1-3 9 awards	1408 awards 774 young people 227 young people 3+ awards 46 young people from SIMD 1-3 10 awards	1425 awards 775 young people 230 young people 3+ awards 45 young people from SIMD 1-3 10 awards
BHA Our Brighter Futures programme	Barrhead Housing Association <i>Lead officer</i> <i>Bryan Dando</i>	No. of people accessing training	<i>No information available</i>	10 participants	22 participants	20 participants
To develop an 'Employability Hub' in the Dunterlie area to support residents to access training and/or employment opportunities	Economic Development & Inclusive Growth <i>Lead officer</i> <i>Michael McKernan</i>	No. of people using the centre. No. of people accessing training/ in work opportunities	New project 22/23	New project 22/23	Take up has been limited	<i>Awaiting confirmation of targets</i>

Critical Activity 2: Working with a range of partners to ensure that lifelong learning opportunities are available and accessible and meet the needs and aspirations of local residents.						
Action	Lead	Success Measure	2020-2021 Results	2021-2022 Results	2022-2023 Results	2023-2024 Targets
Building on existing lifelong learning opportunities, further develop and create appropriate learning opportunities to meet local needs.	Adult Learning Services, Clyde College and West College Scotland <i>Lead/s</i> <i>Jennifer Nicol</i> <i>Sheila White</i> <i>Paul Martin</i>	No. of participants reporting improved skills and confidence in relation to identified personal learning goals.	146 participants	131 participants	153 participants	200 participants
	Multiply Adult Learning Services, Clyde College, RAMH, Voluntary Action East Renfrewshire, Money Advice and Rights Team <i>Lead officer</i> <i>Jennifer Nicol</i>	No. of adult numeracy courses run in a local area through Multiply (numerical value). / Courses set up to increase confidence/ number of people engaged in courses	New project 23/24	New project 23/24	New project 23/24	12 courses
	No. of people participating in Multiply funded courses (numerical value)	130 participants				
	No. of people achieving a qualification (numerical value)	45 participants				
Increased adult numeracy (by supporting learners to improve their understanding and use of maths in their daily lives, at home and at work)	130 participants					
	People & Skills Adult Learning Services,	No. of people supported to access basic skills.				20 participants

	West College Scotland <i>Lead Officer</i> <i>Jennifer Nicol</i> <i>Paul Martin</i>	No. of people gaining a qualification following support	New project 23/24	New project 23/24	New project 23/24	10 participants
	Voluntary Action East Renfrewshire <i>Lead officer</i> <i>Linda McCullagh</i>	No. of participants	New project	14 participants	252 participants	332 participants
	CORRA Foundation <i>Lead officer</i> <i>Gordon McLean</i>	No. of participants	<i>No information available</i>	14 participants	21 participants	20 participants
	Community Learning and Development Health Issues in the Community (HIIC) <i>Lead officer/s</i> <i>Susan Craynor</i> <i>Emma Ball</i> <i>Kelly Giudici</i>	No. of participants No. of awards	New project 22/23	New project 22/23	7 Participants 35 awards	5 participants 5 awards (this is a progression to HIIC Part 2 which is a higher level award and therefore more time required for participants to complete)
	Barrhead Housing Association Tenancy Sustainment Course <i>Lead officer</i> <i>Bryan Dando</i>	No. of participants	New project 22/23	New project 22/23	250 participants	250 participants

Critical Activity 3: Supporting residents to identify their own learning goals and where appropriate access wider accreditation opportunities to recognise their achievements.

Action	Lead	Success Measure	2020-2021 Results	2021-2022 Results	2022-2023 Results	2023-2024 Targets
Continue to further embed processes that ensure residents can identify and negotiate goals, review progress, and shape provision.	Adult Learning Services, Clyde College, West College Scotland <i>Lead officer</i> <i>Jennifer Nicol</i> <i>Sheila White</i> <i>Paul Martin</i>	Percentage of participants who are offered opportunities to identify and negotiate learning goals and receive guidance.	100% of participants offered opportunities to identify and negotiate learning goals and receive guidance	100% of participants offered opportunities to identify and negotiate learning goals and receive guidance	100% of participants offered opportunities to identify and negotiate learning goals and receive guidance	100% of participants offered opportunities to identify and negotiate learning goals and receive guidance
		Percentage of participants offered accreditation opportunities.	19% of participants offered accreditation	19% of participants offered accreditation		35% of participants offered accreditation

Priority - Strong and Resilient Communities

Critical Activity 1: Supporting communities to build the skills, confidence and expertise of local people to participate as equal partners in a range of community led decision-making processes, including Participatory Budgeting and Locality Planning.

Action	Lead	Success Measure	2020-2021 Results	2021-2022 Results	2022-2023 Results	2023-2024 Targets
Support to Youth Voice to deliver Participatory Budgeting (PB) for young people.	Community Learning and Development <i>Lead officer/s</i> Susan Craynor Emma Ball Kelly Giudici	No. of groups receiving funding through Youth PB No. of youth voice participants reporting improved confidence and increased skills.	New Project 2021/22	14 groups 12 participants	30 groups have applied with voting to take place in October 2023 15 participants	18 groups 12 participants
Support to partners (council & community) to deliver Participatory Budgeting.	Community Learning and Development Community-led Grant Making Participatory Budgeting <i>Lead officer/s</i> Susan Craynor Emma Ball Kelly Giudici	No. of groups receiving funding through grant making PB No. of local residents involved in developing and delivering Grant Making PB No. of services supported by CLD to deliver mainstream PB opportunities.	This event did not take place during 2020/21 This event did not take place during 2020/21 This event did not take place during 2020/21	59 groups 5 participants 2 services	51 groups 7 participants 6 services	80 groups 12 participants 6 services
	Education <i>Lead officer</i> David Gordon	No. of schools using parts of budgets such as PEF to adopt a participatory budget approach	Individual school PB did not take place 2020/21	A number of schools participated in PB CLPL	Schools and the education dept allocated approx £167k via PB in 2022-23, of which £88k was allocated by schools. The est. no. of stakeholder participants across these activities was 2569.	All schools to adopt a participatory budgeting approach

152

<p>Provide PB opportunities for local residents to influence how Humanitarian funds are distributed in local communities.</p>	<p>Voluntary Action East Renfrewshire <i>Lead officer Linda McCullagh</i></p>	<p>No. of groups receiving funding through grant making PB</p>	<p>VAER did not deliver PB in 2020/21</p>	<p>VAER did not deliver PB in 2021/22</p>	<p>36 groups received funding via PB</p>	<p><i>Awaiting confirmation of targets</i></p>
<p>Barrhead Housing Community Fund</p>	<p>Barrhead Housing Association <i>Lead officer Bryan Dando</i></p>	<p>Value of funds distributed to communities</p> <p>No. of groups receiving funding</p>	<p>BHA did not deliver PB in 2020/21</p>	<p>£15,938</p> <p>18 groups</p>	<p>A PB event was planned for this year but rolled into next year due to the number of other PB opportunities available in the Barrhead area</p>	<p>£5000 to distribute</p>
<p>Raise awareness of and create opportunities to increase communities' involvement and re-establish Locality Planning post Covid.</p>	<p>Community Learning and Development <i>Lead officer/s Susan Craynor Emma Ball Kelly Giudici</i></p>	<p>No. of opportunities for involvement</p> <p>No. of participants</p>	<p>3 online sessions</p> <p>33 participants</p>	<p>11 sessions</p> <p>180 participants</p>	<p>17 sessions</p> <p>180 participants</p>	<p>Opportunities to raise awareness will continue however priority will now be given to the establishment of steering groups in each of the locality planning areas.</p>
<p>Work alongside local residents to establish Locality Planning Steering Groups</p>	<p>Community Learning and Development <i>Lead officer/s Susan Craynor Emma Ball Kelly Giudici</i></p>	<p>No. of steering groups</p> <p>No. of participants</p>	<p>Due to Covid restrictions this was unable to progress</p>	<p>Focus for CLD was to establish contact and raise awareness with residents as per previous action.</p>	<p>Focus for CLD was to establish contact and raise awareness with residents as per previous action.</p>	<p>4 steering groups</p> <p>20 participants</p>
<p>Community led Local Action Plans to identify future capital infrastructure and investments in town centre and neighbourhood.</p>	<p>Economic Development and Inclusive Growth <i>Lead officer Michael McKernan</i></p>	<p><i>No Information available</i></p>	<p><i>No Information available</i></p>	<p><i>No Information available</i></p>	<p>Economic Development team undertook public consultations to shape the development of Local Actions Plans. These surveys generated over 6000 contributions</p>	<p><i>Awaiting confirmation of targets</i></p>

Critical Activity 2: Working with a range of community planning partners to ensure communities are involved in the planning, design and delivery of local services and can influence decision making on matters that are important to them.

Action	Lead	Success measure	2020-21 Results	2021-2022 Results	2022-2023 Results	2023-2024 Targets
Stakeholders and services are involved in creation of local action plans	Economic Development and Inclusive Growth Lead officer Michael McKernan	No Information available	No Information available	No Information available	No Information available	Awaiting confirmation of Targets

Critical Activity 3: Supporting community groups and organisations to restart and re-establish as part of the Covid recovery and renewal process (ODP 4.4)

Action	Lead	Success measure	2020-21 Results	2021-2022 Results	2022-2023 Results	2023-2024 Targets
Support existing community organisations to provide services in their local community.	Community Learning and Development Lead officer/s Susan Craynor Emma Ball Kelly Giudici	No. of groups supported	3 groups	3 groups	11 groups	20 groups
	Voluntary Action East Renfrewshire Lead officer Linda McCullagh		45 groups	69 groups	71 groups	This is dependent on the needs of the community.
	Corra Foundation Lead officer Laura Mathieson	No. of groups No. of participants	No information available	2 groups 12 volunteers (Foodshare) 15 adults 18 children (Parent & Toddlers)	5 groups	6 Groups 20 Participants
	East Renfrewshire Community and Leisure Trust Community Sports Hubs Lead officer Gary Morton	No. of active hubs/clubs.	6 Community Sport Hubs	Number of hubs reduced to 5 with the merger of Whitecraigs and Eastwood Community Sport Hubs under the name of "Newton Mearns"	5 Community Sport Hubs	6 Community Sports Hubs

Critical Activity 4: Working alongside community organisations and local residents to identify new and emerging needs and support for the community and voluntary sector to build back from the pandemic.

Action	Lead	Success Measure	2020-2021 Results	2021-2022 Results	2022-2023 Results	2023-2024 Targets
Working with partners to further embed the Community Hub initiative to provide support to local communities.	Community Learning and Development/Voluntary Action East Renfrewshire/ Health and Social Care Partnership (Talking Points) <i>Lead officer</i> <i>Kelly Giudici</i> <i>Alan Campbell</i> <i>Alan Stevenson</i>	No. of residents signposted to services and supported through Community Hub	New project 2021/22	203 residents	855 calls to community hub	This is dependent on community need
Work alongside communities to support the development of new community groups/ organisations	Voluntary Action East Renfrewshire <i>Lead officer</i> <i>Linda McCullagh</i>	No. of new groups supported to establish	Information not available – community groups unable to meet due to Covid restrictions	5 new groups	7 new groups	<i>Awaiting confirmation of target</i>
	Corra Foundation <i>Lead officer</i> <i>Gordon McLean</i>		Information not available - community groups unable to meet due to Covid restrictions	4 groups	4 groups	2 groups
	Community Learning and Development <i>Lead officer/s</i> <i>Susan Craynor</i> <i>Emma Ball</i> <i>Kelly Giudici</i>		New targets for CLD in 2022/23	New targets for CLD in 2022/23	2 groups	8 groups

Critical Activity 5: Empowering young people to influence the implementation of the UNCRC across all areas of the councils work.						
Action	Lead	Success measure	2020-21 Results	2021-2022 Results	2022-2023 Results	2023 – 2024 Target
Creation of a Children’s Rights Committee to include representatives from various children and young people groups to influence decisions on matters related to UNCRC	UNCRC Implementation Group (Community Learning and Development, Education, Health and Social care Partnership, Children First, East Renfrewshire Culture and Leisure)	No. of young people reporting they influence decision-making. UNCRC evident in Policies	New project 2022/23	New project 2022/23	12 young people part of UNCRC planning group Over 70 young people attended Youth Assembly 53 young people who attended the Youth Assembly have expressed an interested in participating in the next stages of implementation.	40 young people

Priority – Diversionary

Critical Activity 1: Providing community based youth work across East Renfrewshire which is informed by local data and meets the needs of young people (ODP 4.2)

Action	Lead	Success Measure	2020-2021 Results	2021-2022 Results	2022-2023 Results	2023-2024 Targets
Provide a range of targeted opportunities to young people most in need.	Community Learning and Development <i>Lead officer/s</i> Susan Craynor Emma Ball Kelly Giudici	No. of opportunities No. of young people participating	2 opportunities 228 young people	6 opportunities 202 young people	12 opportunities 307 young people	12 opportunities 300 young people
	CORRA Foundation <i>Lead officer</i> Gordon McLean	No. of opportunities No. of participants	No opportunities during pandemic	8 per week during holiday programme 100 participants	3 events (Summer) 375 participants	<i>Awaiting confirmation of targets</i>

Critical Activity 2: Delivering a targeted street work programme including a new problem solving detached youth work response to engage young people and help address anti-social and risk taking behaviour (ODP 4.2)

Action	Lead	Success Measure	2020-2021 Results	2021-2022 Results	2022-2023 Results	2023-2024 Targets
Delivering a targeted street work programme including a new problem solving detached youth work response to engage young people and help address anti-social and risk taking behaviour	Community Learning and Development <i>Lead officer/s</i> Susan Craynor Emma Ball Kelly Giudici	No. of interactions with young people.	August 20-July 21 4822 contacts 66% contacts made 12-15 years old 501 shifts – 1252.50 hours	August 21-July 22 3089 contacts 70 % contact made 12-15 years old 387 shifts – 967.50 hours	August 22 – July 23 3107 contacts 73% contacts made 12 – 15 year olds 263 shifts -657.5 hours	3000 contacts with young people

Critical Activity 3: Strengthening links with partners to support the planning and delivery of youth work opportunities.

Action	Lead	2022-2023/2023-2024
<p>Use shared data and intelligence to plan and deliver youth work opportunities which respond to the needs of partners, young peoples and communities.</p>	<p>Community Learning and Development <i>Lead officer/s</i> <i>Susan Craynor</i> <i>Emma Ball</i> <i>Kelly Giudici</i></p>	<p>CLD work with a range of community safety partners at strategic and operational levels to share data and information in relation to crime and anti-social behaviour. This is allowing us to target our resources effectively and work together to ensure a proactive approach to targeting ASB in communities and that young people are safe (and enjoying themselves!)</p> <p>As a result of increased concerns in relation to young people and antisocial behaviour in the Barrhead area, CLD have worked alongside a range of community safety partners to provide a targeted response to concerns. This has included an increased detached youth work presence, changes to opening times of youth work facilities and targeted interventions for young people involved in or on the fringes of this behaviour. Feedback from partners tell us that this approach has had a positive impact on young people and the wider community. Young people and their parents report that through their involvement young people feel supported and more able to make positive decision about their lives.</p> <p>This action will carry in to 23/24.</p>

Critical Activity 4: Providing opportunities for young people to explore and challenge their risk taking behaviours and support them to make informed choices.

Action	Lead	Success Measure	2020-2021 Results	2021-2022 Results	2022-2023 Results	2023-2024 Targets
<p>Deliver a range of group work interventions.</p>	<p>Community Learning and Development <i>Lead officer/s</i> <i>Susan Craynor</i> <i>Emma Ball</i> <i>Kelly Giudici</i></p>	<p>No. of schools participating in the programme</p> <p>No. of young people participating in school programmes.</p> <p>No. of young people taking part in community based programme</p>	<p>New project in 21/22</p>	<p>3 schools</p> <p>47 young people</p> <p>10 young people</p>	<p>6 schools</p> <p>84 young people</p> <p>1 group 12 young people 6 one to one longer term supports to young people</p>	<p>5 schools <i>(targets set in September, school requests for this programme come throughout the academic year)</i></p> <p>50 young people</p> <p>2 groups 15 young people</p>

Priority – Equality & Equity

Critical Activity 1: Strengthening partnerships to connect and engage with priority groups and those with protected characteristics, to establish a role for CLD

Action	Lead	2022-2023/2023-2024
<p>To coordinate networking opportunities for organisations who provide support to children, young people and adults with additional support needs.</p>	<p>Community Learning and Development <i>Lead officer/s</i> Susan Craynor Emma Ball Kelly Giudici</p>	<p>CLD regularly bring together a range of partners through the Additional Needs Partnership to share information, provide support, facilitate training and when appropriate share resources. The aim of this partnership is to provide opportunities to work collaboratively and avoid duplication of services. CLD continues to engage with organisations to ensure that the membership is representative and current.</p>

Critical Activity 2: Connecting and engaging with priority groups and those with protected characteristics to ensure that the needs of these groups are understood and met

Action	Lead	Success Measure	2020-2021 Results	2021-2022 Results	2022-2023 Results	2023-2024 Targets
<p>Provide a range of opportunities in the community for people with protected characteristics.</p>	<p>Include Me 2 <i>Lead officer</i> Paul McIlvenny</p>	<p>No. of groups</p>	<p><i>No information available</i></p>	<p>7 groups</p>	<p>22 groups</p>	<p>22 groups</p>
	<p>ER Carers Centre Including BAME worker <i>Lead Officer</i> Lorraine Nelson</p>	<p>No. of sessions</p>	<p><i>No information available</i></p>	<p>446 sessions</p>	<p>1117 sessions</p>	<p>1117 sessions</p>
	<p>Community Learning and Development <i>Lead officer/s</i> Susan Craynor Emma Ball Kelly Giudici</p>	<p>No. of participants</p>	<p><i>No information available</i></p>	<p>183 participants</p>	<p>596 participants</p>	<p>596 participants</p>
		<p>No. of participants</p>	<p><i>No information available</i></p>	<p>1 group</p>	<p>3 groups</p>	<p>4 groups</p>
		<p>No. of participants</p>	<p><i>No information available</i></p>	<p>15 participants</p>	<p>30 participants</p>	<p>35 participants</p>
		<p>No. of groups</p>	<p>New project 2023/24</p>	<p>New project 2023/24</p>	<p>New project 2023/24</p>	<p>3 groups</p>

Critical Activity 3: Supporting priority groups and those with protected characteristics to influence change.						
Action	Lead	Success Measure	2020-2021 Results	2021-2022 Results	2022-2023 Results	2023-2024 Targets
Members Mingle and Forum	Include Me 2 <i>Lead officer</i>	No. of participants	<i>No information available</i>	30 participants	15 participants	<i>Awaiting confirmation of targets</i>
Critical Activity 4: Providing targeted CLD support for priority groups and those with protected characteristics which provide peer support and opportunities to socialise, learn and participate						
Action	Lead	Success Measure	2020-2021 Results	2021-2022 Results	2022-2023 Results	2023-2024 Targets
Provide a range of targeted opportunities to young people most in need.	Community Learning and Development <i>Lead officer/s</i> <i>Susan Craynor</i> <i>Emma Ball</i> <i>Kelly Giudici</i>	No. of groups	6 groups	7 groups	10 groups	10 groups
		No. of participants	<i>71 participants</i>	66 participants	77 participants	80 participants
Provide a range of opportunities in the community for people with protected characteristics.	Include Me 2 <i>Lead officer</i> <i>Paul McIlvenny</i>	No. of opportunities No. of sessions No. of participants No. of participants that report their needs are being met	<i>No information available</i>	7 opportunities 446 sessions 183 participants 100% of participants report needs being met.	26 opportunities 2056 sessions 662 participants 100% of participants report needs being met.	26 opportunities 2056 sessions 662 participants 100% of participants will report needs being met.

Priority – Digital

Critical Activity 1: Continuing to develop the CLD learning offer using remote and blended approaches to meet the needs of residents.

Action	Lead	Success Measure	2020-2021 Results	2021-2022 Results	2022-2023 Results	2023-2024 Targets
Provide a range of options for residents to choose how they participate in social, recreational and learning opportunities.	Adult Learning Services <i>Lead officer</i> <i>Jennifer Nicol</i>	No. of participants engaged in remote or blended opportunities Percentage of participants who are offered remote or blended opportunities	140 participants 100% offered remote or blended opportunities	131 participants 97% offered remote or blended opportunities	35 participants 50% offered remote or blended opportunities	We will continue to offer blended learning opportunities but this no longer needs to be a critical activity for Adult Learning Services. Any remote or blended learning will be included in our digital skills learning offer outcomes.
	Include Me 2 <i>Lead officer</i> <i>Paul McIlvenny</i>	No. of participants in the Online Digital Programme, Digital Champions and Get Online Support Group	12 participants 9 Digital Champions	25 participants 9 Digital Champions	18 participants 9 Digital Champions	18 participants 9 Digital Champions

Critical Activity 2: Identifying residents who are digitally excluded and source opportunities to meet their digital needs

Action	Lead	Success Measure	2020-2021 Results	2021-2022 Results	2022-2023 Results	2023-2024 Targets
Working in partnership with the Digital Inclusion Partnership to co-ordinate access to devices, venues with devices and internet access.	Adult Learning Services <i>Lead officer</i> <i>Jennifer Nicol</i>	No. of devices issued No. of MiFi devices issued	40 devices 40 MiFi	18 devices 18 MiFi	No requests received for this support.	This is no longer a priority that we see in the community. We will support any initiatives if they arise but can't set targets and won't be planning around this outcome.
	Voluntary Action East Renfrewshire <i>Lead officer</i> <i>Linda McCullagh</i>		No devices distributed	2 Chromebook 5 MiFi devices	No requests received for this support.	

	Barrhead Housing Association <i>Lead officer</i> <i>Bryan Dando</i>		No devices distributed	75 devices 75 MiFi devices	10 residents supported by our Digital Drop ins Digital lending library established for BHA residents.	Continue to run lending library
	Include Me 2 <i>Lead officer</i> <i>Paul McIlvenny</i>		No devices distributed	95 devices 95 Mifi devices	Digital support is available as and when required for recipients of devices	Digital support will be available as and when required for recipients of devices

Critical Activity 3: Providing support to those who receive devices to ensure they can maximise its full potential

Action	Lead	Success Measure	2020-2021 Results	2021-2022 Results	2022-2023 Results	2023-2024 Targets
To provide support to residents through Digital Champions role and other programmes.	Adult Learning Services <i>Lead officer</i> <i>Jennifer Nicol</i>	No. of participants offered access to ongoing support to use the devices received through Connecting Scotland and other local initiatives.	40 participants	62 participants	62 participants	There isn't a need for this specific project moving forward. We will continue to provide this support through our digital learning courses
	Voluntary Action East Renfrewshire <i>Lead officer</i> <i>Linda McCullagh</i>		New project 2021/22	8 participants	We continue to provide face to face support through our digital support volunteer.	We will continue to provide face to face support through our digital support volunteer.
	Community Learning and Development <i>Lead officer/s</i> <i>Susan Craynor</i> <i>Emma Ball</i> <i>Kelly Giudici</i>		New project 2021/22	90 participants	90 offered continuous support 1 person accessed support through established support offer to those who received devices.	CLD will continue to offer support if required
	Barrhead Housing Association <i>Lead officer</i> <i>Bryan Dando</i>		New project 2021/22	75 participants	75 offered support	10 participants 3 digital drop ins

					10 participants supported part of a lending library	
	Include Me 2 <i>Lead officer</i> <i>Paul McIlvenny</i>		New project 2021/22	12 participants	24 participants	24 participants

Critical Activity 4: Delivering a range of accessible digital learning opportunities which meet resident’s needs, goals and aspirations, including, engaging with and accessing services.

Action	Lead	Success Measure	2020-2021 Results	2021-2022 Results	2022-2023 Results	2023-2024 Targets
Building on existing digital learning opportunities, further develop and create appropriate opportunities to meet local needs including opportunities for accreditation.	Adult Learning Services <i>Lead officer</i> <i>Jennifer Nicol</i>	Percentage of participants reporting improved skills and confidence in relation to identified digital learning goals.	94% participants reported improved skills and confidence.	94% participants reported improved skills and confidence.	98% participants reported improved skills and confidence.	98% participants will report improved skills and confidence
	Include Me 2 <i>Lead officer</i> <i>Paul McIlvenny</i>	No. of Digital Champions	New project 2021/22	9 digital champions	9 digital champions	9 digital champions
	Voluntary Action East Renfrewshire <i>Lead officer</i> <i>Linda McCullagh</i>	No. of participants supported to access digital learning to access services.	New project 2021/22	228 participants	360 participants	360 participants
	East Renfrewshire Culture & Leisure Trust (Libraries Digital Inclusion) <i>Lead officer</i> <i>Lynsey Ng</i>	No. of participants through Libraries Digital Inclusion programme	2019/20 623 participants <i>(included numbers from several one-off projects delivered that year)</i>	219 participants	350 participants	720 participants

Priority – Early Years & Family Learning

Critical Activity 1: Working in partnership with a range of services to plan and deliver needs led programmes for parents, parents to be, and families.

Action	Lead	Success Measure	2020-2021 Results	2021-2022 Results	2022-2023 Results	2023-2024 Targets
Support to parents to provide opportunities for them to socialise, develop new skills and provide peer support.	Community Learning and Development <i>Lead officer/s</i> <i>Susan Craynor</i> <i>Emma Ball</i> <i>Kelly Giudici</i>	No. of participants involved	5 participants	4 participants	7 participants	12 participants

Critical Activity 2: Providing opportunities for families to learn together and for parents to develop the skills and knowledge required to support their children's learning.

Action	Lead	Success Measure	2020-2021 Results	2021-2022 Results	2022-2023 Results	2023-2024 Targets
Deliver a range of ESOL for Parents and Adult Literacy and Numeracy Support programmes for Parents.	Adult Learning Services and Clyde College <i>Lead officer/s</i> <i>Jennifer Nicol</i> <i>Sheila White</i>	No. of participants with identified family learning goals.	56 participants	48 participants	60 participants	60 participants
		Percentage of participants reporting improved skills and confidence in relation to their goals.	95% have reported improved skills and confidence	93% have reported improved skills and confidence	98% have reported improved skills and confidence	98% reporting improved skills and confidence
	Multiply Adult Learning Services Glasgow Clyde College Voluntary Action East Renfrewshire <i>Lead Officer</i> <i>Jennifer Nicol</i>	No. of parents taking part in Numeracy for Parents courses.	Year 3 project	Year 3 project	Year 3 project	20 participants
		No. of parents gaining accreditation for their learning.	Year 3 project	Year 3 project	Year 3 project	10 participants
	East Renfrewshire Culture and Leisure Trust (Library Family Programme)	No. of Bookbug locations (including SIMD 1 – 3)	8 libraries	8 libraries	8 libraries	<i>Awaiting confirmation of targets</i>

Delivery of parent and child activities delivered in local communities	<i>Lead officer Gary Morton</i>	No. of attendances	39,334 attendances	4,674 attendances	21,979 attendances	
	Barrhead Housing Association Community Investment Projects <i>Lead officer Bryan Dando</i>	No. of participants	New Project for BHA in 2021-22	54 participants	<i>No information available</i>	<i>Awaiting confirmation of targets</i>
		No. of children receiving books		44 children	18 children	
		No. of books distributed		500 books distributed	216 books distributed	
	Corra Foundation <i>Lead officer Gordon McLean</i>	No. of participants	<i>No information available</i>	15 adults 18 children	4 Young Volunteers 4 Families engaged in planning and delivering activities. 2 new groups supported 2 Family events	<i>Awaiting confirmation of targets</i>

Critical Activity 3: Providing support to targeted young people around unplanned or underage pregnancy.

Action	Lead	Success Measures	2020-2021 Results	2021-2022 Results	2022-2023 Results	2023-2024 Targets
Provide group work opportunities to targeted groups of young people with a focus on sexual health and wellbeing, healthy relationships and gender based violence to enable informed decision making	Community Learning and Development/Education <i>Lead officer/s Susan Craynor Emma Ball Kelly Giudici</i>	No. of programmes delivered	4 programmes	9 programmes	11 programmes	14 programmes
		No. of young people participating in RespectER, PSHE programmes and Mentors in Violence Prevention	41 participants	137 participants	214 participants	250 participants

Critical Activity 4: Working alongside local groups and individuals to identify the need for community led groups and peer support networks.						
Action	Lead	Success Measures	2020-2021 Results	2021-2022 Results	2022-2023 Results	2023-2024 Targets
Support to local residents to identify the need for male parent-led support groups in the local community	Community Learning and Development <i>Lead officer/s</i> Susan Craynor Emma Ball Kelly Giudici	Conduct local mapping exercise to establish community need.	New project 2023/24	New project 2023/24	New project 2023/24	Complete mapping exercise in Barrhead area
Critical Activity 5: Supporting local groups and individuals to build their skills and capacity to deliver community led groups for parents and carers in their area						
Action	Lead	Success Measures	2020-2021 Results	2021-2022 Results	2022-2023 Results	2023-2024 Targets
Provide training and support to groups and individuals to increase community capacity	Community Learning and Development <i>Lead officer/s</i> Susan Craynor Emma Ball Kelly Giudici	No. of groups supported No. of participants supported No. of training opportunities provided	New project 2023/24	New project 2023/24	New project 2023/24	This will be developed to respond to identified need through mapping exercise.

BLANK PAGE